

## Area Hutan

Hasil Regresi WHC dan Erosi

### 1. Model Summary

Model	R	R Square	Adjusted R Square	Std. Error of the Estimate
1	,139 <sup>a</sup>	,019	-,144	7,90883

### 2. ANOVA

Model	Sum of Squares	df	Mean Square	F	Sig.
Regression	7,437	1	7,437	,119	,742 <sup>b</sup>
Residual	375,298	6	62,550		
Total	382,735	7			

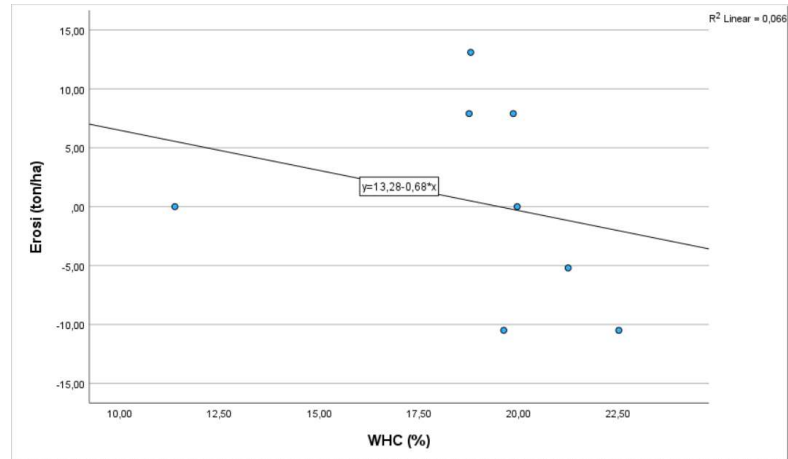
### 3. Coefficient

Model		Unstandardized Coefficients		Standardized Coefficients	t	Sig.
		B	Std. Error	Beta		
1	(Constant)	-14,964	58,616		-,255	,807
	WHC	1,104	3,202	,139	,345	,742

## Lampiran 9. Hasil Grafik Regresi Linear

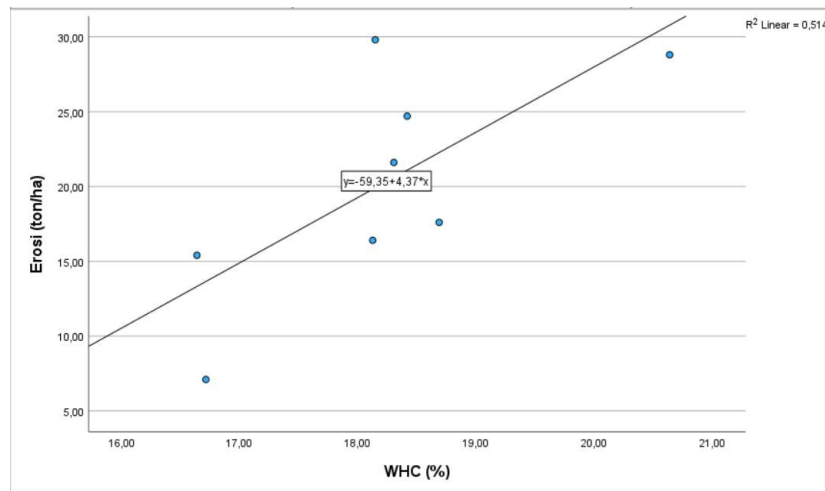
### 1. Area Cover Crop Lebat

Regresi Erosi dan WHC



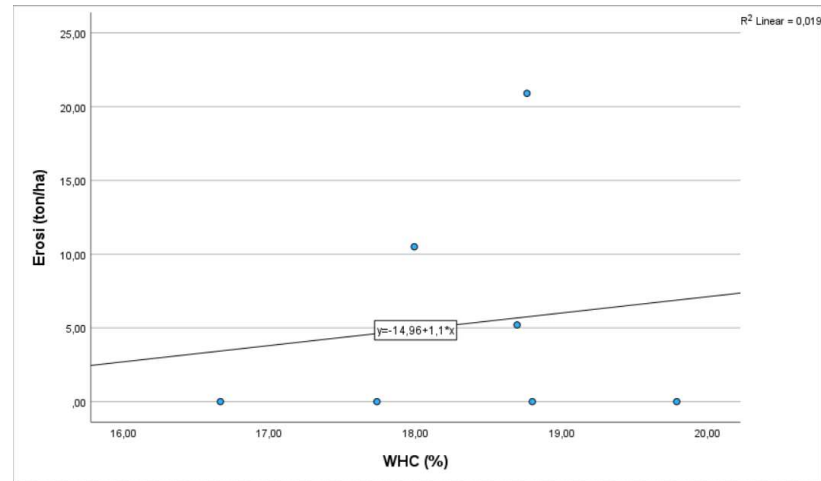
### 2. Area Cover Crop Jarang

Regresi Erosi dan WHC



### 3. Area Hutan

#### Regresi Erosi dan WHC



### Lampiran 10. Hasil Perhitungan Erosi

**Tabel Nilai Laju Erosi Area *Cover Crop* Lebat**

	Tanggal	Penurunan Tanah (cm)	Berat Volume (gram/cm <sup>3</sup> )	Erosi (ton/ha)
1	24/11/2022	0	1,57	0
2	26/11/2022	-0,07	1,57	-10,99
3	6/12/2022	0,08	1,57	12,56
4	7/12/2022	-0,03	1,57	-4,71
5	8/12/2022	0	1,57	0
6	12/12/2022	-0,07	1,57	-10,99
7	21/12/2022	0,05	1,57	7,85
8	22/12/2022	0,05	1,57	7,85
Total Erosi (ton/ha)				1,57

**Tabel Nilai Laju Erosi Area *Cover Crop* Jarang**

	Tanggal	Penurunan Tanah (cm)	Berat Volume (gram/cm <sup>3</sup> )	Erosi (ton/ha)
1	24/11/2022	0,06	1,2326	7,38
2	26/11/2022	0,13	1,2326	15,99
3	6/12/2022	0,13	1,2326	15,99
4	7/12/2022	0,14	1,2326	17,22
5	8/12/2022	0,23	1,2326	28,29
6	12/12/2022	0,18	1,2326	22,14
7	21/12/2022	0,24	1,2326	29,52
8	22/12/2022	0,20	1,2326	24,60
Total Erosi (ton/ha)				161,13

**Tabel Nilai Laju Erosi Area Hutan**

	Tanggal	Penurunan Tanah (cm)	Berat Volume (gram/cm <sup>3</sup> )	Erosi (ton/ha)
1	24/11/2022	0	1,5735	0
2	26/11/2022	0	1,5735	0
3	6/12/2022	0,03	1,5735	4,71
4	7/12/2022	0,03	1,5735	4,71
5	8/12/2022	0	1,5735	0
6	12/12/2022	0,07	1,5735	10,99
7	21/12/2022	0,13	1,5735	20,41
8	22/12/2022	0	1,5735	0
Total Erosi (ton/ha)				40,82

### Lampiran 11. Hasil Perhitungan WHC

**Tabel Nilai WHC Lapang Area *Cover Crop* Lebat**

No	Tanggal	Cover Crop Lebat (%)			Rata-rata	Keterangan
		S1	S2	S3		
1	24/11/2022	19,91	10,67	3,58	11,39	-
2	26/11/2022	19,28	17,53	22,08	19,63	Banyak bahan organik bagian lereng tengah
3	6/12/2022	18,37	18,33	19,70	18,80	-
4	7/12/2022	21,98	21,12	20,63	21,24	-
5	8/12/2022	19,80	20,55	19,54	19,96	-
6	12/12/2022	23,23	23,94	20,38	22,52	-
7	21/12/2022	17,12	17,98	21,17	18,76	-
8	22/12/2022	20,21	20,94	18,44	19,86	-
Rata-rata					19,02	

**Tabel Nilai WHC Lapang Area *Cover Crop* Jarang**

No	Tanggal	Cover Crop Jarang (%)			Rata-rata	Keterangan
		S1	S2	S3		
1	24/11/2022	18,09	13,44	18,61	16,71	-
2	26/11/2022	15,29	18,13	16,49	16,64	Ditemukan bongkahan batuan
3	6/12/2022	17,96	17,26	19,15	18,12	-
4	7/12/2022	18,66	19,23	18,17	18,69	Ditemukan potongan kayu pada lereng atas dan bawah dan serpihan batubara pada lereng tengah
5	8/12/2022	19,95	18,94	23,03	20,64	Ditemukan kayu pada lereng bawah
6	12/12/2022	18,19	16,92	19,80	18,30	-
7	21/12/2022	18,29	17,26	18,89	18,15	-
8	22/12/2022	17,48	19,05	18,71	18,41	-
Rata-rata					18,21	

**Tabel Nilai WHC Lapang Area Hutan**

No	Tanggal	Hutan (%)			Rata-rata	Keterangan
		S1	S2	S3		
1	24/11/2022	18,55	17,35	23,45	19,78	-
2	26/11/2022	17,30	19,07	16,84	17,74	-
3	6/12/2022	15,56	17,52	20,50	17,86	Ditemukan cacing tanah pada lereng bawah
4	7/12/2022	18,49	18,06	19,53	18,69	-
5	8/12/2022	11,23	18,27	20,50	16,67	-
6	12/12/2022	18,04	17,22	18,71	17,99	-
7	21/12/2022	18,55	18,76	18,98	18,76	-
8	22/12/2022	18,17	18,37	19,86	18,80	-
Rata-rata					18,29	

**Tabel Nilai WHC Maksimal Daerah Penelitian**

No	Titik Sampel	Area Cover Crop Lebat (%)	Area Cover Crop Jarang (%)	Area Hutan (%)
1	S1	44,49	32,46	58,52
2	S2	42,66	28,71	63,35
3	S3	41,13	41,88	52,41
Rata-rata		41,76	34,35	58,09