

ISSN: 2186-2982 (Print) 2186-2990 (Online)



Scopus

EBSCO

CENGAGE Learning



GIF GLOBAL IMPACT FACTOR



VOLUME 17

Issue 63 & 64

November – December 2019

International Journal of GEOMATE

(Geotechnique, Construction Materials and Environment)



Tsu, Japan

THE GEOMATE INTERNATIONAL SOCIETY

<http://www.geomatejournal.com/>

INTERNATIONAL JOURNAL OF GEOMATE

(Geotechnique, Construction Materials & Environment)

ISSN: 2186-2982(Print), 2186-2990(Online)

International Journal of GEOMATE is Abstracted/Indexed in: SCOPUS, Web of Science Emerging Sources Citation Index (ESCI), EBSCO, Global Impact Factor (GIF), Gale (a Cengage Learning Company), ULRICHSWEB, Global Serials Directory, etc.

Impact Factor (by GIF): 2015: 1.009; 2014: 0.987; 2013: 0.825; 2012: 0.714
Paper acceptance rate: 2015: 35.28%; 2014: 37.5%; 2013: 38.71%; 2012: 46.66%; 2011: 61.53%

Honorary Editor

Prof. Dr. Shoji Inoue, Professor Emeritus, Mie University, Japan

Editor-in-Chief:

Prof. Dr. Zakaria Hossain, Mie University, Japan

Assistant to the Editor-in-Chief:

Dr. Jim Shiau, University of Southern Queensland, Australia

Associate Editors:

Prof. Dr. Fumio Tatsuoka, Tokyo University of Science, Japan
Prof. Dr. Sai Vanapalli, University of Ottawa, Canada
Prof. Dr. Ian Jefferson, University of Birmingham, United Kingdom
Prof. Dr. Mounir Bouassida, National School of Engineering of Tunis
Prof. Dr. Bujang B.K. Huat, University Putra Malaysia, Malaysia
Prof. Dr. Nemy Banthia, University of British Columbia, Canada
Prof. Dr. Toshinori Sakai, Mie University, Japan
Prof. Dr. Valeriy Perminov, Tomsk Polytechnic University, Russia
Prof. Dr. Jing-Cai Jiang, University of Tokushima, Japan
Prof. Dr. Lilia Robles Austriaco, Angles University Foundation, Philippines
Prof. Dr. Muhammad Ibn Ibrahimy, International Islamic University, Malaysia
Prof. Dr. Shamsul I. Chowdhury, Roosevelt University, USA
Prof. Dr. Isabel Pinto, University of Coimbra, Portugal
Prof. Dr. Mark Jaksa, University of Adelaide, Australia
Prof. Dr. Kaneco Satoshi, Mie University, Japan
Prof. Dr. Junichiro Takeuchi, Kyoto University, Japan
Prof. Dr. Ranjith Pathegama Gamage, Monash University, Australia
Prof. Dr. Kingshuk Roy, Nihon University, Japan
Prof. Dr. Md. Shahin Hossain, Islamic University of Technology, Bangladesh
Prof. Dr. Pedro Arrua, Universidad Tecnológica Nacional, Argentina
Prof. Dr. Miguel A. Pando, University of North Carolina, USA
Prof. Dr. Saksun Horpibulsuk, Suranaree University of Technology, Thailand
Prof. Dr. Musharraf Zaman, University of Oklahoma, USA
Prof. Dr. Rafiqul Tarefder, University of New Mexico, USA
A/Prof. Dr. John Victor Smith, RMIT University, Australia
Prof. Dr. Basir Mir, National Institute of Technology Srinagar, India
Prof. Dr. Lily Surayya Eka, State Islamic University Syarif Hidayatullah Jakarta, Indonesia

A full list of sub-editors and editorial assistants are given in the web page.

Copyright © International Journal of GEOMATE

All rights reserved. In principle, no part of this publication or the information contained herein may be reproduced in any form or by any means, translated in any language, stored in any database or retrieval system, or transmitted in any form or by any means without prior permission in writing from the publisher.

Disclaimer: The editors and the publisher have tried their best effort to ensure integration and the quality of this publication and information herein. However, they give no warranty of any kind, expressed or implied with regard to the material contained in this journal, and will not be liable in any event for the consequences of its use.

Publisher: The GEOMATE International Society

Place of publication: Tsu city, Mie, Japan

Contact: Editor-in-Chief, Dr. Zakaria Hossain, Professor, Graduate School of Bioresources, Mie University, 1577 Kurimamachiya, Tsu city, Mie 514-8507, Japan

E-mail: editor@geomatejournal.com, URL: <http://www.geomatejournal.com/>

Tel & Fax: +81-59-231-9578

INTERNATIONAL JOURNAL OF GEOMATE

(Geotechnique, Construction Materials & Environment)

ISSN: 2186-2982(Print), 2186-2990(Online)

Founded in 2011, *The "International Journal of GEOMATE"* is a Scientific Journal of the GEOMATE International Society that encompasses a broad area in Geotechnique, Construction Materials, and Environment. The key objective of this journal is to promote interdisciplinary research from various regions of the globe. The editorial board of the journal is comprised of extensively qualified researchers, academicians, scientists from Japan and other countries of the world. It is a peer-reviewed journal that is published quarterly. All articles published in this journal are available online. Contributors may download the manuscript preparation template for submitting paper or contact to the Editors-in-Chief [editor@geomatejournal.com].

Aims and Scopes:

The journal aims to become an efficient mean of publishing and distributing high-quality information from the researchers, scientists, and engineers. The main scopes are as follows:

- Advances in Composite Materials
- Computational Mechanics
- Foundation and Retaining Walls
- Slope Stability
- Soil Dynamics
- Soil-Structure Interaction
- Pavement Technology
- Tunnels and Anchors
- Site Investigation and Rehabilitation
- Ecology and Land Development
- Water Resources Planning
- Environmental Management
- Earthquake and Tsunami Issues
- Safety and Reliability
- Geo-Hazard Mitigation
- Case History and Practical Experience
- Others

Review Policy:

- The paper which meets the editorial criteria will be assigned to at least two anonymous reviewers for peer-review.
- Authors may recommend some reviewers - however, Editors are entitled to consider them or not.
- The Editorial Board consists of an outstanding group that is responsible for the review process of the submitted manuscripts and will guarantee the quality of the publication.
- The manuscript will be published as soon as it is accepted and all the modifications recommended by the reviewers are made.
- The review procedure is as strict as in the most prestigious journals, but publication time is minimized.
- Based on the reviewers' comments, the Editors will make a decision on a paper as one of the following four conditions:
 1. Accept without revision
 2. Accept with minor revision
 3. Encourage to resubmit with major revision
 4. Reject

In case of acceptance with either minor or major revisions, the authors will be advised to revise the manuscript according to the reviewers' comments.

INTERNATIONAL JOURNAL OF GEOMATE

(Geotechnique, Construction Materials & Environment)

ISSN: 2186-2982(Print), 2186-2990(Online)

Instruction to Author:

The manuscript to be submitted should be prepared using the manuscripts submission template. Download the manuscript formatting template from download files menu. The manuscript to be submitted adheres to the rules and guidelines given in manuscript template. The manuscript should be written in English. List of references must be translated into English if other languages (both should be written). The page limit is 8 pages for ordinary manuscript and 10 pages for the invited manuscript. The references inside the text and in the bibliographic list should follow the formats as per the manuscript template. All figures, graphs, and tables must follow the font-style of the text. Ensure clear and good quality picture in the first submission. Selected manuscript from "GEOMATE Conference Presentation" will be reprinted in the journal with nominal charges (40% discount of regular fees) based on the agreement of the authors. Accepted papers which were not presented in "GEOMATE Conference" need publication charges of 800 USD as regular fees. Any page or fraction thereof exceeding page limit will be charged 100 USD per page. Extra author fee is 100 USD/author if exceeding 5 authors. This is required for its maintenance such as managing article submission and peer review, typesetting, tagging and indexing of articles, hosting articles on dedicated servers, supporting sales and marketing costs to ensure global dissemination via different databases, and permanently preserving the published journal article. Copyright: GEOMATE required to obtain copyright of papers from authors for the term of copyright by signing and returning the publishing agreement.

Submission Method:

Submit full manuscript online using "Submission" menu. We accept online submission only. Copyright release form to be e-mailed separately along with the manuscript submission. Download it from the "Download Files Menu". Abolition of printed version: Considering environmental conservation, the paper version has been discontinued since June 2016. For any questions: Contact us [editor@geomatejournal.com].

Membership Fees: Regular Member 100USD/year; Life Member 900USD only.

Membership Benefits:

- Receive Membership ID/Card
- Use M.G. or L.M.G. after your name (M=Member, G=Geomate, L=Life)
- Be involved in GEOMATE technical committees and activities
- Be up-to-date on the current development in the field
- Priority right to participate in international conferences with 20% discount
- 20% discount for Journal paper publication
- Vote in the election of GEOMATE officers
- Access to the Journal webpage

Membership Application (send the related items below using online form):

- Full Name:
- Title/Position (check one): Prof. A/Prof. Dr. Mr. Ms.
- Membership Category (check one): Regular Member Life Member Others
- Address:
- Tel & Fax:
- E-mail (co-authors email separated by comma):
- Research Area (check one): Geotechnique Construction Materials Environment Others

INTERNATIONAL JOURNAL OF GEOMATE

(Geotechnique, Construction Materials & Environment)

ISSN: 2186-2982(Print), 2186-2990(Online)

STATEMENT ON PUBLICATION ETHICS AND PUBLICATION MALPRACTICE (1/2)

The International Journal of GEOMATE is a double-blind peer-reviewed journal. All parties involved in the act of publishing an article for this journal, i.e.: the editors, the author, the peer-reviewers and the publisher must follow the ethical behavior indicated in the COPE's Best Practice Guidelines for Journal Editors. In order to warrant high-quality scientific publications, public trust in scientific findings, and that people receive credit for their ideas, the ethical standards for publication are followed.

DUTIES OF EDITORS

A decision on the Publication of Article: Based on the double-blind peer review of a paper, the Chief Editor and the Associate Editor are responsible for deciding which of the articles accepted for publication. Neither the Chief Editor nor the Associate Editor has the authority to influence the reviewers who are conducting the blind review of the articles submitted for peer review. The Chief Editor and the Associate Editor may be guided by the policies of the journal's Editorial Board and subjected to such legal requirements regarding libel, copyright infringement, and plagiarism.

Honest Play: Manuscripts submitted to GEOMATE shall be exclusively evaluated based mainly on their intellectual quality and significance. GEOMATE will not give any consideration to authors' race, gender, sexual orientation, religious beliefs, ethnic origin, citizenship, or political philosophy.

Confidentiality: The Chief Editor, the Associate Editor, and any editorial staff must not disclose any information about a submitted manuscript to anyone other than the corresponding author, reviewers, potential reviewers, other editorial advisers, and the publisher.

Disclosure and Conflicts of Interest: Unpublished materials disclosed in a submitted manuscript must not be used by anyone who has a view of the manuscript (while handling it) in his or her own research without the express written consent of the author.

DUTIES OF REVIEWERS

The contribution of Double-Blind Peer Review: Any identifying information will be stripped out from the submitted paper so that the reviewers do not know any information about the authors and vice versa i.e.: reviewers' comments to the editors are confidential and before passing on to the authors, it will be made anonymous. The Double Blind Peer review assists the reviewers in making editorial decisions, while editorial communications with the author may also assist the author in improving the manuscript. The names of the reviewers known only to the Chief Editor and the Associate Editor and it remains strictly confidential to authors.

Punctuality: Any selected referee who feels unqualified to review the assigned manuscript or unable to provide a prompt review should notify the Chief Editor and the Associate Editor and excuse himself/herself from the review process.

Confidentiality: Private information or ideas obtained through double-blind peer review must be kept confidential and not used for personal advantage. Manuscripts received for review must be treated as confidential documents. Without any authorization by the Chief Editor and the Associate Editor, the information of the submitted manuscript must not be shown to or discussed with, others.

Standards of Objectivity: There shall be no personal criticism of the author. Reviewers should express their views clearly with supporting arguments and reviews should be conducted objectively.

Acknowledgment of Sources: Authors should cite relevant references and corresponding citation if any statement in the submitted paper had been previously published or reported elsewhere. Reviewers should identify relevant published work that has not been cited by the authors. If a reviewer finds any substantial similarity or overlap between the submitted manuscript and any other published works, s/he should inform the Chief Editor/Associate Editors.

Conflict of Interest: In any reviewers find that the submitted manuscript has conflicts of interest resulting from competitive, collaborative, or other relationships or connections with any of the authors, companies, or institutions, s/he should not review that manuscripts and notify to the Chief Editor/Associate Editors prompt.

DUTIES OF AUTHORS

Reporting Standards: Authors of papers of original research should present an accurate account of the work performed as well as an objective discussion of its significance. Underlying data should be represented accurately in the paper. A manuscript should contain sufficient detail and references to permit others to replicate the work. Fraudulent or knowingly inaccurate statements constitute unethical behavior and are unacceptable.

Data Access and Retention: Authors may be asked to provide the raw data in connection with a paper for editorial review, and should be prepared to provide such data for public access or for access to the readers of the journal.

Originality and Plagiarism: The authors should ensure that they have written entirely original works, and if the authors have used the work and/or words of others, this must be appropriately cited or quoted. All papers published by International Journal of GEOMATE are committed to publishing only original material, i.e., material that has neither been published elsewhere nor is under review elsewhere. The paper that is found to have been plagiarized from a manuscript by other authors, whether published or unpublished, will incur plagiarism sanctions.

INTERNATIONAL JOURNAL OF GEOMATE

(Geotechnique, Construction Materials & Environment)

ISSN: 2186-2982(Print), 2186-2990(Online)

STATEMENT ON PUBLICATION ETHICS AND PUBLICATION MALPRACTICE (2/2)

Acknowledgment of Sources: Proper acknowledgment of the work of others must always be given. Authors should cite publications that have been influential in determining the nature of the reported work.

Manipulation of Citations: Submitted papers that are found to include citations whose primary purpose is to increase the number of citations to a given author's work, or to articles published in a particular journal, will incur sanctions for manipulation of citations.

Falsification and Fabrication: Submitted papers that are found to have either falsified or fabricated numerical/experimental results, including the manipulation of images, will incur data fabrication and falsification sanctions.

Authorship: The authorship of a paper should be limited to those who have made a significant contribution to the conception, design, execution, or interpretation of the reported study. All those who have made significant contributions should be listed as co-authors. Where there are others who have participated in certain substantive aspects of the research project, they should be acknowledged or listed as contributors.

Scientific Contribution: All listed authors must have made a significant scientific contribution to the research in the manuscript and approved all its claims. It is important to list everyone who made a significant scientific contribution, including students and laboratory technicians.

Corresponding Author: Corresponding Author is the author responsible for communicating with the journal for publication. The corresponding author should ensure that all appropriate co-authors and no inappropriate co-authors are included on the paper and that all co-authors have seen and approved the final version of the paper and have agreed to its submission for publication.

Acknowledgment of Funding Sources: Funding sources for the research reported in the manuscript should be duly acknowledged after the conclusion and before the list of references.

Disclosure and Conflicts of Interest: All sources of financial support for the project or any substantive conflict of interest that might be interpreted to influence the results of the paper should be disclosed.

Fundamental Errors in Published Works: It is the author's responsibility to promptly notify the Chief Editor/Associate Editor if s/he discovers a significant error or inaccuracy in his/her own published work to retract or correct the paper.

Redundant, Concurrent or Multiple Publications: An author should not, in general, publish manuscripts describing essentially the same research in more than one journal or primary publication. Manuscripts that are found to have been published elsewhere, or to be under review elsewhere, will incur duplicate submission/publication sanctions. If authors have used their own previously published work or work that is currently under review, as the basis for a submitted manuscript, they are required to cite the previous work and indicate how their submitted manuscript offers novel contributions beyond those of the previous work. Submitting the same manuscript to more than one journal concurrently constitutes unethical publishing behavior and is unacceptable. Redundant publications involve the inappropriate division of study outcomes into several articles.

SANCTIONS

In the event that there are documented violations of any of the above-mentioned policies in any journal, regardless of whether or not the violations occurred in a journal published by GEOMATE, the following sanctions will be applied:

- Immediate rejection of the infringing manuscript.
- Immediate rejection of every other manuscript submitted to GEOMATE by any of the authors of the infringing manuscript.
- The prohibition against all of the authors for any new submissions to GEOMATE, either individually or in combination with other authors of the infringing manuscript, as well as in combination with any other authors. This prohibition will be imposed for a minimum of five years.
- Prohibition against all of the authors from serving on the Editorial Board of the International Journal of GEOMATE

In cases where the violations of the above policies are found to be particularly outrageous, the publisher reserves the right to impose additional sanctions beyond those described above.

INTERNATIONAL JOURNAL OF GEOMATE

(Geotechnique, Construction Materials & Environment)

ISSN: 2186-2982(Print), 2186-2990(Online)

Volume 17, Issue 63

DEVELOPMENT OF THE DEFORMATION MONITORING SYSTEM WITH WIRELESS SENSOR NETWORK AND EVALUATION OF MECHANICAL STABILITY FOR DAMAGED STONEWALLS Yuuya Katsuda, Satoshi Sugimoto, Yoichi Ishizuka, Shohei Iwasaki, Ryoma Takaesu and Minoru Yamanaka	1-8
SOFT CLAY IMPROVEMENT TECHNIQUE BY DEWATERING AND MIXING SANDY SOIL Flemmy Samuel Oye, Kiyoshi Omine and Zichen Zhang	9-16
PREPARATION OF GEOPOLYMER CEMENT FROM CRUSHED STONE BY-PRODUCT USING ALKALI FUSION Kazuki Sakamoto and Takaaki Wajima	17-22
DESIGN OF BASE ISOLATED REINFORCED CONCRETE BUILDING SUBJECTED TO SEISMIC EXCITATION USING EC 8 Norliyati Mohd Amin, Nabihan Ayub and Anizahyati Alisibramulisi	23-28
GEOSPATIAL MODEL OF PHYSICAL AND SOCIAL VULNERABILITY FOR TSUNAMI RISK ANALYSIS Abu Bakar Sambah, F. Miura, Guntur, Sunardi and A. F. Febriana	29-34
STUDY OF VEGE-GROUT AS COATING MATERIAL IN REDUCING SURFACE TEMPERATURE RC Omar, Hairin Taha, R. Roslan, INZ Baharuddin and AHanna	35-40
A CREATIVE VALIDATION METHOD FOR SELF COMPACTING CONCRETE (SCC) LATERAL PRESSURE MODEL USING ARCHIMEDES' LAW Saeed Nemati, Bijan Samali, Farshad Sanati, Yahya Aliabadizadeh and Farzad Yaghmaei	41-48
EFFICIENT REPAIR SCHEDULING STRATEGY OF A MULTI-SOURCE LIFELINE NETWORK USING CONSTRAINED SPANNING FOREST Lessandro Estelito Garciano, Agnes Garciano, Mark Tolentino and Abraham Matthew Carandang	49-54
BIOCEMENTATION OF SRI LANKAN BEACH SAND USING LOCALLY ISOLATED BACTERIA: A BASELINE STUDY ON THE EFFECT OF SEGREGATED CULTURE MEDIA Pahala Ge Nishadi Nayanthara, Anjula Buddhika Nayomi Dassanayake, Kazunori Nakashima and Satoru Kawasaki	55-62
PHYSICAL ANALYSIS CONDITIONS AROUND LEBAK BULUS MRT STATION IN SOUTH JAKARTA, INDONESIA Doddy Apriansyah, Lita Sari Barus, Ahmad Zubair, H. Andi Simarmata and Jachrizal Sumabrata	63-68
M-ESTIMATOR SAMPLE CONSENSUS PLANAR EXTRACTION FROM IMAGE-BASED 3D POINT CLOUD FOR BUILDING INFORMATION MODELLING Korawit Pleansamai and Krisada Chaiyasarn	69-76
COMPARISON OF BEDROCK AND SURFACE TIME HISTORIES SUBJECTED TO SUBDUCTION EARTHQUAKES IN A SELECTED LOCATION OF YOGYAKARTA Mochamad Teguh and Wisnu Erlangga	77-86
ULTIMATE BEARING CAPACITY OF COLLAPSING KHON KAEN LOESS T. Prommin and R. Nuntasarn	87-94
MODELING THE DISTRIBUTION OF CHEMICAL OXYGEN DEMAND TO DETERMINE THE OPTIMAL MILL EFFLUENT OUTLET LOCATION Eddy Rachman Gandanegara, Harman Ajiwibowo and Andoyo Wurjanto	95-102
MODEL IDENTIFICATION FOR THE EVALUATION OF CRITICAL BUCKLING LOAD IN REINFORCED CONCRETE RECTANGULAR COLUMNS Oussama Jarachi, Moulay Larbi Abidi and Toufiq Cherradi	103-110
PREDICTING RESIDUAL FRICTIONAL ANGLE BY ATTERBERG LIMITS FOR RESERVOIR EMBANKMENT SOILS Chen Fang, Hideyoshi Shimizu, Tatsuro Nishiyama and Shin-Ichi Nishimura	111-118
ANALYSIS THE EFFECTS OF THE DEGREE OF SATURATION ON THE SLOPES STABILITY USING MODELLING AND NUMERICAL SIMULATION Dang Trung Thanh, Nguyen Tuan Long and Le Trong Thang	119-125

INTERNATIONAL JOURNAL OF GEOMATE

(Geotechnique, Construction Materials & Environment)

ISSN: 2186-2982(Print), 2186-2990(Online)

Volume 17, Issue 63

EFFECT OF DEEP SOIL MIXING TO INCREASING BEARING CAPACITY ON PEAT SOIL Ratna Dewi, William Borgan, Ira Zunita, Yulindasari and Maulid M. Iqbal	126-132
APPLICABILITY OF CRUSHED CLAY BRICK AND MUNICIPAL SOLID WASTE SLAG AS LOW-COST ADSORBENTS TO REFINE HIGH CONCENTRATE Cd (II) AND Pb (II) CONTAMINATED WASTEWATER G.M.P. Kumara and Ken Kawamoto	133-142
A CASE STUDY ON RECONSTRUCTION EFFECT FOR SMALL IRRIGATION TANK Alatannabuqi Zhang, Hideyoshi Shimizu and Toshiharu Kojima	143-148
EARTHQUAKE ANALYSIS IN EAST JAVA, INDONESIA BETWEEN 1960 – 2017 USING MARKOV CHAIN MODEL Adi Susilo, Farizky Hisyam and Wasis	149-156
GEOTECHNICAL SPECIFICATION OF AMERICAN AND KAZAKHSTAN STANDARDS IN PILE TESTING Askar Zhussupbekov, Assel Tulebekova, Talal Awwad, Turlybek Mussabayev and Akmaral Tleubayeva	157-163
RISK ASSESSMENT AND REHABILITATION POTENTIAL OF MUNICIPAL SOLID WASTE LANDFILLS IN BALI PROVINCE, INDONESIA I Made Wahyu Widyarsana, Enri Damanhuri, Elprida Agustina and Rizkia Nur Aulia	164-171
DRAINED SHEAR STRENGTH OF COMPACTED KHON KAEN LOESS FROM MULTISTAGE TRIAXIAL TEST S. Chatchawan and R. Nuntasarn	172-180
CHANGES IN JOINT SURFACE ROUGHNESS OF TWO NATURAL ROCKS DURING SHEARING Chen Cui, Ivan Gratchev, Matthew Chung and Dong-Hyun Kim	181-186
RE-EVALUATION OF SEISMIC HAZARD IN TASIKMALAYA CITY USING PROBABILISTIC APPROACH Bambang Sunardi, Supriyanto Rohadi, Anisa Dila Indriyani, Sulastri and Dwikorita Karnawat	187-194
THE INFLUENCE OF CLAY-LIKE MATERIALS PLASTICITY USED AS INFILLS, ON JOINTED ROCKS MECHANICAL BEHAVIOR Ngaha Tiedeu William, Jiang Deyi, Chen Jie and Fan Jinyang	195-202
SEISMIC BEHAVIOUR OF REINFORCED CONCRETE FRAME BUILDINGS WITH MASONRY INFILL Mouzzoun Mouloud and Cherrabi Abdelkader	203-209
LITHOLOGICAL IDENTIFICATION OF DEVASTATED AREA BY PIDIE JAYA EARTHQUAKE THROUGH POISSON'S RATIO ANALYSIS Marwan, Asrillah, M. Yanis and Yoshinori Furumoto	210-216
IMPACT OF PVA FIBER AS FINE AGGREGATE REPLACEMENT IN ALKALI-ACTIVATED FLY ASH ON FLOW RATE, MECHANICAL PROPERTIES AND DRYING SHRINKAGE Yuyun Tajunnisa, Wahyuniarsih Sutrisno and Mitsuhiro Shigeishi	217-223
EXPERIMENTAL STUDY ON THE DILATANCY OF ROCK SALT FROM AN UNLOADING PATH Yunfeng Zhao, Jinyang Fan, Deyi Jiang, Xiang Jiang and Wei Liu	224-232
ULTIMATE STRIP STRENGTH OF PERFOBOND STRIP WITH SMALL HOLE CONFINED BY CONCRETE COVER Shintaro Tani and Katashi Fujii	233-240
GEOELECTRICAL METHODS FOR GEOTHERMAL EXPLORATION IN ENDUT GEOTHERMAL PROSPECT AREA, BANTEN PROVINCE, INDONESIA Supriyanto, Maryadi Maryadi, Dyah Nindita Sahdarani and Ahmad Zarkasyi	241-248

INTERNATIONAL JOURNAL OF GEOMATE

(Geotechnique, Construction Materials & Environment)

ISSN: 2186-2982(Print), 2186-2990(Online)

Volume 17, Issue 63

A NEW GEOLOGICAL MAP FOR FORMATION DISTRIBUTION ON SOUTHERN PART OF SOUTH CHINA SEA: WEST KALIMANTAN, INDONESIA Husnul Kausarian, Shao Lei, Goh Thian Lai, Yuchi Cui and Batara	249-254
ANALYSIS OF STRATIGRAPHY AND SEDIMENTATION DYNAMICS OF COAL, SAWAHLUNTO FORMATION, OMBILIN BASIN Budi Prayitno, Muhammad Riva'i, Adi Suryadi, Husnul Kausarian and Fazrol Rozi	255-262
FATIGUE LIFE ANALYSIS OF RIGID PAVEMENT STRUCTURE WITH PERVIOUS CONCRETE BASE LAYER USING 2D FINITE ELEMENT METHOD Frisky Ridwan Aldila Melania Care and Bambang Sugeng Subagio	263-270
SOIL STABILIZATION WITH GEOPOLYMERS FOR LOW COST AND ENVIRONMENTALLY FRIENDLY CONSTRUCTION Wisam Dheyab, Zeyad Tariq Ismael, Mazin Ali Hussein and Bujang Bin Kim Huat	271-280
NUMERICAL ANALYSIS TO EVALUATE THE EFFECT OF RESTRAINED EDGE DISTANCE ON EARLY AGE CRACKING DUE TO DRYING SHRINKAGE Maha. Ali. Abusogi and WEI Xiao sheng	281-287
MODELING THE SPATIAL CONCENTRATION DISTRIBUTION OF ENVIRONMENTAL PARAMETERS AND TOTAL SUSPENDED SEDIMENT IN DIATAS LAKE, WESTERN SUMATRA, INDONESIA Andojo Wurjanto and Harman Ajiwibowo	288-296
APPLICATION OF DIGITAL IMAGE TECHNOLOGY FOR DETERMINING GEOMETRY, STRATIGRAPHY, AND POSITION OF CRACKS INSIDE EARTH SLOPE Dewi Amalia, Indrasurya Budisatria Mochtar and Noor Endah Mochtar	297-306
FLOOD ROUTING ANALYSIS OF THE WAY SEPUTIH RIVER, CENTRAL LAMPUNG, INDONESIA Andojo Wurjanto, Trika Agnestasia Tarigan and Julfikhsan Ahmad Mukhti	307-314
SOIL TREATMENT BY BENTONITE AND FLY ASH FOR LINERS OF WASTE LANDFILL: A CASE STUDY IN VIETNAM Lan Chau Nguyen, Hai Long Chu and Lanh Si Ho	315-322
SAFETY FACTOR CHARACTERIZATION OF LANDSLIDE IN RIAU-WEST OF SUMATRA HIGHWAY Catur Cahyaningsih, Febby Asteriani, Puja Fransismik Crensonni, Tiggi Choanji and Yuniarti Yuskar	323-330
SEEPAGE FAILURE IN FOUNDATION OF WEIR WITH CUT-OFF WALLS BY MODEL EXPERIMENTS AND ELASTO-PLASTIC FEM Kenji Okajima	331-339
DETERMINE THE VULNERABILITY OF URBAN SURFACE WATER RESOURCES IN RACH GIA CITY, VIETNAM USING GEOGRAPHIC INFORMATION SYSTEM Dinh Tuan Hai and Trinh Thi Phin	340-346
COMPARATIVE ANALYSIS OF CONVENTIONAL SEISMIC SURVEY WITH PASSIVE SEISMOELECTRIC EXPLORATION AT GAS CONDENSATE FIELD V. S. Potylitsyn, G. Y. Shaydurov, D. S. Kudinov, E. A. Kokhonkova and P. V. Balandin	347-352
STRENGTH OF SOFT CLAY REINFORCED WITH 10 MM SINGLE CRUSHED COCONUT SHELL (CCS) COLUMN Muzamir Hasan, Ieszaliana Ali and Masayuki Hyodo	353-359
LABORATORY AND FIELD EVALUATION OF A-6 LATERITIC SOIL TREATED WITH RECLAIMED ASPHALT PAVEMENT AND ORDINARY PORTLAND CEMENT Mustapha Mohammed Alhaji, Musa Alhassan, Taiye Waheed Adejumo and Awwal Tanko Umar	360-370
ANALYSIS OF EROSION USING HYDROSEEDING ON POST COAL MINING IN MELAK SITE Waterman Sulistyana Bargawa and Arisdiansyah Putra, M. Nurcholis	371-377
MEASUREMENT OF ANTI-STRIPPING AGENT CONTENT IN ASPHALT MIXTURE WITH COLORIMETRIC TEST Zulkarnain Abdul Muis, Meriani Batubara, Adina Sari Lubis ³ and Renita Manurung	(378-385)

INTERNATIONAL JOURNAL OF GEOMATE

(Geotechnique, Construction Materials & Environment)

ISSN: 2186-2982(Print), 2186-2990(Online)

Volume 17, Issue 64

AN INNOVATIVE GROUND ANCHOR FOR DEEP EXCAVATIONS IN VIETNAM Chau Lan Nguyen, Quang Manh Truong and Tuan Nghia Do	1-8
FLEXIBLE PAVEMENT DESIGN USING MECHANISTIC-EMPIRICAL PAVEMENT DESIGN GUIDE IN THE PHILIPPINES Lestelle Torio-Kaimo, Juan Michael Sargado and Daniel Peckley Jr.	9-17
THE INFLUENCE OF MIXED TRAFFIC ON CONGESTION LEVEL AND MARGINAL ROAD CONGESTIONS Dewa Made Priyantha Wedagama	18-25
ANALYSIS OF PASSIVE SEISMOELECTRIC MEASUREMENTS IN EARTH'S NOISE FIELDS V. S. Potylitsyn, G. Y. Shaydurov, D. S. Kudinov, O. A. Maykov, E. A. Kokhonkova and V. V. Romanov	2-31
THE DYNAMICS OF LAND USE CHANGE IN PADANG CITY FOR HYDROLOGICAL MODELING Yudi Antomi, Ernawati, Triyatno, Ikhwan and Siti Fatimah	32-40
IMPROVEMENT ON NUMERICAL SOLUTION OF 1-D FLOW WITH HYPER-CONCENTRATED SEDIMENT Djoko Legono, Adam Pamudji Rahardjo, Denik Krisnayanti and Roby Hambali	41-48
INVESTIGATION ON PERFORMANCE OF EPOXY COATED STEELS WITH NANO-SIO ₂ AND POLYANILINE COMPOSITE USING COMPLEX IMPEDANCE SPECTROSCOPY Vella G. Dela Cruz, Alvin Karlo G. Tapia, Milagros M. Peralta, Ronaniel A. Almeda, Engelbert K. Peralta, Marloe B. Sundo, Richelle G. Zafra and Marish S. Madlangbayan	49-54
RA CLUSTERING (RAC) METHOD FOR ACOUSTIC EMISSION SYSTEM ON CONCRETE STRUCTURE Nur Amira Afiza Saiful Bahari, Shahiron Shahidan, Norbazlan Mohd Yusof, Mohd Haziman Wan Ibrahim and Sharifah Salwa Mohd Zuki	55-62
ASSESSMENT OF ELEVATED TEMPERATURE EFFECTS ON SELF-COMPACTING AND HIGH-STRENGTH CONCRETE BEAMS IN COMPARISON WITH NORMAL CONCRETE BEAMS Ahmed Hassan, Laila Abd-EL-Hafez, Faisal Aldhafari and Alaa Abouelezz	63-70
SPECIFIC FEATURES OF IDENTIFICATION AND CORRECTION OF ERRORS IN THE REGISTER MADE IN THE LAND SURVEYING Vadim Vladimirovich Badera, Olga Nikolaevna Dolmatova, Elena Anatolyevna Kuryachaya, Irina Vasilievna Tsyplenkova and Tatyana Viktorovna Nozhenko	71-76
INFLUENCE OF CEMENT AND ASPHALT EMULSION RATIOS ON CEMENT-ASPHALT EMULSION MORTAR Patcharapan Nanthavisit, Peerapong Jitsangiam and Preda Pichayapan	77-84
CRACK DETECTION IN REINFORCED CONCRETE BEAM STRUCTURES BASED ON THE HIGHEST MODE SHAPES SUBJECTED TO INCREMENTAL LOADS Fadillawaty Saleh, Sam Fragomeni, Dahn Tran and Hakas Prayuda	85-92
ANGLE OF SLOPE AND SLOPE SAFETY FACTOR RELATIONSHIP IN GENDOL RIVER, SOUTHERN SLOPE OF MERAPI VOLCANO, YOGYAKARTA Purwanto, Zufialdi Zakaria, Eko Teguh Paripurno and Boy Yoseph C.S.S.A	93-99
ENHANCING BIOREMEDIATION OF CRUDE OIL CONTAMINATED SOIL BY COMBINING WITH PHOTOCATALYTIC PROCESS USING TiO ₂ AS CATALYST Agus Jatnika Effendi and Tiwi Aminati	100-107
VARIATION OF BEARING CAPACITY PREDICTION FOR SHALLOW FOUNDATIONS BY SPT AND LABORATORY TESTS Omer Muhie Eldeen Taha	108-114
USE OF LIGHTWEIGHT DYNAMIC CONE PENETROMETER FOR COMPACTION CONTROL OF COHESIONLESS SOILS Mona Mansour, Ahmed Samieh and Asmaa Nour El-Deen	115-122

INTERNATIONAL JOURNAL OF GEOMATE

(Geotechnique, Construction Materials & Environment)

ISSN: 2186-2982(Print), 2186-2990(Online)

Volume 17, Issue 64

SLAKE DURABILITY OF THE COMPACTED-SILTSTONE FRAGMENT WITH CEMENT STABILIZATION Edi Hartono, Sri Prabandiyani Retno Wardani and Agus Setyo Muntohar	123-130
CHEMICAL COMPOSITION AND SOURCES ATTRIBUTION OF RAINWATER IN BANDUNG AREA, INDONESIA Nia Yuniarti Hasan, Driejana, Aminudin Sulaeman and Herto Dwi Ariesyady	131-138
ANALYSIS OF RAINFALL IN THE KAZAKHSTAN Askar Zhussupbekov, Yerkebulan Zharkenov and Marat Kuderin	139-144
AN IMPROVED METHOD FOR WATERSHED MANAGEMENT - A CASE STUDY OF ARCGIS APPLICATION TO THE SKUDAI WATERSHED, MALAYSIA Noorul Hassan Zardari, Irena Binti Naubi, Suhail Ahmed Abbasi, Karam Ali Jamali and Tahseen Fatima	145-151
COUPLED AND UNCOUPLED APPROACHES FOR THE ESTIMATION OF 1-D HEAVE IN EXPANSIVE SOILS DUE TO TRANSIENT RAINFALL INFILTRATION: A CASE STUDY IN CENTRAL VIETNAM The Viet Tran and Minh Thu Trinh	152-157
UTILIZATION OF CRUMB RUBBER AS AGGREGATE IN HIGH CALCIUM FLY ASH GEOPOLYMER MORTARS Yuwadee Zaetang, Ampol Wongsu, Prinya Chindaprasirt and Vanchai Sata	158-165
IMPACT OF MOTORCYCLES AND SHOULDER WIDTH ON TWO-LANE HIGHWAY CAPACITY IN THAILAND USING TRAFFIC MICRO-SIMULATION MODEL Wuttikrai Chaipanha, Ladda Tanwanichkul and Jumrus Pitaksringkarn	166-177
STUDY OF THE HEAT VENTILATION WITH INCLINED CHIMNEY IN THE ATTIC Sahabuddin Latif, Baharuddin Hamzah, Ramli Rahim, Rosady Mulyadi and Andi Erwin Eka Putra	178-184
LABORATORY BASED PARAMETRIC STUDY ON THE SWELL RESPONSES IN EXPANSIVE VERTOSOLS Rajitha Shehan Udukumburage	185-191
WATER QUALITY ASSESSMENT OF RIVERS IN PADANG USING WATER POLLUTION INDEX AND NSF-WQI METHOD Indang Dewata	192-200
FLOOD RISK ASSESSMENT OF MAJOR RIVER BASINS IN THE PHILIPPINES Christian Dominick Q. Alfonso, Marloe B. Sundo, Richelle G. Zafra, Perlie P. Velasco, Jedidiah Joel C. Aguirre and Marish S. Madlangbayan	201-208
CRACKED SOILS BEHAVIOR DUE TO DRYING CONDITIONS USING A FUZZY C-MEANS METHOD Yerry Kahaditu Firmansyah, Ria Asih Aryani Soemitro, Dwa Desa Warnana and Januarti Jaya Ekaputri	209-216
THE MORPHOMETRICAL INITIATION STAGE OF THE PIEZOMETRIC STRUCTURAL COMPARTMENT USING SATELLITE IMAGERY IN THE SOUTHERN SLOPE OF MERAPI Herry Riswandi, Emi Sukiyah, Boy Yoseph CSS Syah Alam and Mohamad Sapari Dwi Hadian	217-223
EFFECTIVENESS OF DECREASING PERMEABILITY AND INCREASING SHEAR STRENGTH OF SANDY SOIL USING EXOPOLYSACCHARIDE BIOPOLYMER Emma Yuliani and Andre Primantyo Hendrawan	224-229
MANAGEMENT OF FLOOD HAZARD AREAS IN PASAMAN RIVER BASIN OF WEST PASAMAN REGENCY WEST SUMATRA PROVINCE Indang Dewata and Iswandi Umar	230-237
ENHANCEMENT OF BEARING CAPACITY OF SOFT SOIL USING GEOSYNTHETICS Md Lokman Hossain, Hossain Md Shahin and Teruo Nakai	238-244

INTERNATIONAL JOURNAL OF GEOMATE
(Geotechnique, Construction Materials & Environment)
ISSN: 2186-2982(Print), 2186-2990(Online)

Volume 17, Issue 64

THE EFFECT OF WASTE COOKING OIL BIODIESEL TO THE DIESEL ENGINE PERFORMANCE Hasan Maksun, Wawan Purwanto and Ali Basrah Pulungan	245-251
CADMIUM ADSORPTION ONTO NAOH ACTIVATED PALM KERNEL SHELL CHARCOAL Muhammad Faisal, Asri Gani and Abrar Muslim	252-260
IDENTIFICATION OF CONSTRUCTION SYSTEM AND ARRANGEMENT OF BAJO TRIBE SETTLEMENT BASED ON LOCAL WISDOM AND ENVIRONMENTALLY FRIENDLY	261-266
BEHAVIOR OF GEOGRID-PILE FOUNDATION SYSTEM IN LOOSE SANDY SOILS UNDER HALABJAH EARTHQUAKE Athraa Abdul Ameer Sadiq Al Ghanim, Qassun Saad Mohammed Shafiqu and Asma Thamer Ibraheem	267-276

THE MORPHOMETRICAL INITIATION STAGE OF THE PIEZOMETRIC STRUCTURAL COMPARTMENT USING SATELLITE IMAGERY IN THE SOUTHERN SLOPE OF MERAPI

*Herry Riswandi^{1,2}, Emi Sukiyah³, Boy Yoseph CSS Syah Alam⁴, and Mohamad Sapari Dwi Hadian⁴

¹Doctoral Program of Geological Engineering, Universitas Padjadjaran, Bandung; Indonesia

²Department of Geological Engineering, Universitas Pembangunan Nasional Veteran, Yogyakarta; Indonesia

³Department of Geoscience, Universitas Padjadjaran, Bandung; Indonesia

⁴Department Applied Geology, Universitas Padjadjaran, Bandung; Indonesia

*Corresponding Author, Received: 05 July 2019, Revised: 14 Sept. 2019, Accepted: 26 Oct. 2019

ABSTRACT: The study area is on the southern slope of Merapi Mountain in Yogyakarta, and focus on the relation of satellite imagery with piezometric and structure compartment. The preliminary geological study of satellite imagery is using a digital elevation model and Landsat 8 data extraction. The morphometry initiation is used to get the structure lineaments compartment, and it came from morphometry quantification value to indicating the implication of geological structure controls to the groundwater level distribution. The methods emphasize the quantitative descriptive approach form morphometry equation. Thus quantitative morphometry methods are then follow up by statistical and hierarchical cluster analysis of piezometric. The result of morphometry variable shows the structural lineament creates and control by active tectonics, and it implacable to the piezometric spatial distribution besides the implication of volcanic deposit variation, uplifting and asymmetric river mature form. The statistical analysis represents a relation between structure lineament with the piezometric, and the analysis result imaging on the digitized maps for each compartment compares with the trends of piezometric. The result of this study emphasizes that the initiation of morphometry is needed to use to compartmentation the structure lineaments, and the compartment becomes the controller of piezometric distribution.

Keywords: Morphometry, structure lineament, piezometric, groundwater

1. INTRODUCTION

The crucial stage that happens in the slope of Merapi Mountain as the preserve recharge zone is a morphological change from the wide-opening valley to narrow-closing of the stream. This deformation was causing groundwater level differences with the geological structure to involve. This phenomenon investigates with morphometry initiation using a digital elevation model (DEM) and Landsat 8 imagery data extraction. The extraction is visualizing the remote sensing process in a geographic information system (GIS). This imagery use for the watershed network [1], geological structure lineaments evaluation [2, 3], and it use for piezometric modeling associated with the neotectonic activity reflecting from landform imagery deformation [3, 4, 5]. Morphometry is part of the evaluation of geological structure involvement for structural change on the stream, and the morphology, and it can visualize the variation of piezometric [6].

The streams of Gendol, Opak, Kuning and Boyong is the specific location study objective in the southern slope of Merapi volcanic in Yogyakarta, Indonesia. The lithological unit is

depositing on the river's location are composed of young Quaternary pyroclastic rock from the Merapi volcano deposits. The deposits are tuff, ash, breccias, agglomerates, lava, and avalanches deposit [7]. The involvement of these lithological varies responsibility for the changing of the piezometric groundwater level. This changing developed a high-performance solution with morphometry initiation, involving the lineament compartments and piezometric on the pattern of the groundwater flow stage. This research workable to delineate the structural, spatial trend into three different zones. They are analyzing and modifying the different of the piezometric compartment by hierarchical cluster analysis, depicted in the piezometric map and lineament spatial distribution.

2. METHODS

The morphometry and hydrogeological data were analyzing the determination of the existence of the geological structure implication; they also analyze the piezometric groundwater evolution. The statistical relation between piezometric and structural lineament shows in the spatial distribution lineaments and piezometric map. Data

management of morphometry and piezometric systematically arranged and aligned into GIS. The extraction data came from the imagery of DEM 30-meter resolution and Landsat 8 imagery data [8] using band 7 for 30-meter and band 8 for 15-meter resolution. The extraction exports to computer-aided design (CAD) and PCI Geomatica to different interpretation data. GIS data constructed to specific information on morphology by calculating the quantitative variables from the surface formation.

The surface information used to determine the value of the geomorphic index, the level of tectonic activity, dimensional aspects such as length and azimuth of river segment, aligned azimuth, flow density, river order, and river ratios, and elevation.

A score of an existing geomorphic index using the formula of each variable, and then used for the analysis of tectonic activity. Bifurcation of the ratio (Rb) is the result of the comparison of the number of a specific order (Σn) river segments with the number of next order (n+1) river segments [9] as in

$$Rb = \frac{\Sigma n}{n+1} \quad (1)$$

Drainage density (Dd) is obtaining by calculating the total length of streamflow (ΣLs) compared to the total watershed area (A) [10] as in

$$Dd = \frac{\Sigma Ls}{A} \quad (2)$$

The sinuosity of mountain front (Smf) is the result of the comparison of the surface length of mountain face (Lmf) to the long straight of mountain face (Ls) [11] as in

$$Smf = \frac{Lmf}{Ls} \quad (3)$$

Valley ratio or comparison of valley width and height (Vf) obtained by comparison of valley width (Vfw) with the height of the right (Eld-Esc) and left valleys (Erd-Esc), as well as the valley ratio elevation [12] as in

$$Vf = \frac{2Vfw}{[(Eld-Esc) + (Erd-Esc)]} \quad (4)$$

The asymmetry factor or the value of river asymmetry (AF) can show the tectonic effect seen from the flow pattern [13, 14]. It can obtain from the comparison of the river basin area (Ar) with the total area (At) of the river basin [15] as in

$$AF = 100 \times \frac{Ar}{At} \quad (5)$$

The stream length or value of the river gradient index (SL) is deriving from the multiplication of the total length (L) of the river by the ratio of the

elevation difference (ΔH) from the point calculated by the length (ΔL) of the river [15] as in

$$SL = \frac{\Delta H}{\Delta L} \times L \quad (6)$$

Hypsometric integrals (Hi) are calculating the difference in average elevation with minimum elevation, divided by the maximum elevation difference with minimum elevation [16] as in

$$Hi = \frac{H_{mean} - H_{min}}{H_{max} - H_{min}} \quad (7)$$

Transverse topographic symmetry (T) is calculating from the ratio of the midline distance from the valley to the maximum height with the diameter spacing from the valley to the minimum height [17, 15] as in

$$T = \frac{Da}{Dd} \quad (8)$$

Elongation of basin ratio (Eb) is obtaining from the ratio of roots to diameter of the circle of the river basin divided by phi, with the length of the watershed [18, 13] as in

$$Eb = \frac{2\sqrt{\frac{Ab}{\pi}}}{lb} \quad (9)$$

The extracted data analyze, including the geological structure such as slope, curvature, aspect, hillshade, lineament, fault, fracture, and piezometric.

This study was using geostatistical analysis to interpret the morphometry and groundwater level spatial distribution, also the influence of groundwater flow and structure involvement. The relation between morphometry and piezometric in the geological structure compartment of the fault is using the hierarchical cluster analysis. Hierarchical cluster analysis using Euclidean distance (space of straight-line calculation from two-point between angle and distance) for same distance measurements. Ward's method for clustering classification, base on the missing information because of object merging to cluster and its measuring use total of square deviation on the mean cluster. It is the Software Statistical Package for the Social Sciences (SPSS) that we used to analyze all samples statistically in piezometric.

Piezometric data mapped by kriging gridding method with Surfer software using a non-directional variogram estimator type. Experimental variograms of piezometric parameters show a sharp curve and linear with spherical variogram component model — the data collected along with the general directions of the regional groundwater flow direction. The data do not tightly cover the

entire study area, particularly in the north of a compartment where the data are too rare, and it very close to the top of the volcano. Even the computational technique used for closing the weak data area; there is no other way to make estimating maps for piezometric parameters. The interpretation of interpolation every computed method compares with realizing errors from counting. Comparison of the generated morphometry and piezometric map evaluated in statistical such as maximum, minimum, mean, and variance. All this method were enforced to a geostatistical framework to explain the groundwater piezometric characteristic of the structural compartmentalization.

3. RESULT AND DISCUSSION

The initiate morphometry distribution of watershed flow is assessing by knowing the value of the ratio of bifurcation and drainage density to find out the deformed landform and lithological resistance. Refer to “Eq. (2)” the lower density 3.4 Kuning and 3.9 Opak are indicating a more resistant rock, found in lower reliefs being lightly eroded and having infiltration capacity with good permeability. Density in the Gendol 4.5 can indicate the softer rocks, and Boyong 4.8 indicates a strongly eroded watershed, as shown in Tabel 1.

The Smf calculation refers to “Eq. (3)” from 22 incision relief result minimum number are 1.4 indicates an active tectonic in high level with a full ridge shape, dominant swelling, and erosion, the Smf maximum number are 2.8 is the medium level of tectonic activity.

The Vf calculation refers to “Eq. (4)” results show high uplift level 0.001 to 0.370 and low uplift rate 1.207 to 15.293, counted value less than 0.5 equal to 65% from 22 incision relief, that value indicates the area dominated by high elevation level.

AF calculations refer to “Eq. (5)” in the stream of each with a value of 32.0, 16.7, 31.9, and 19.4, a value less than 50 points indicates a slope due to tectonic movement. The SL calculations “Eq. (6)” on the Gendol show, 5.9 points of value is reflecting the lowest tectonic activity other than Opak 12.2, Kuning 8.6, and Boyong 8.8.

The value of Hi “Eq. (7)” by comparison of elevation (h/H) and river area (a/A) indicates that the integral equations of hypsometry are in the same progression of the mature river, with Gendol 0.407 and 0.480, Opak 0.570 and 0.403, Kuning 0.403 and 0.487, and Boyong 0.426 and 0.415.

The accumulated calculation of the T value “Eq. (8)” shows that the asymmetry value of the river has shifted from the left to the right and has moved towards the West.

The values of Eb calculated “Eq. (9)” from rivers above 0.002-0.004 indicate very elongated,

so that river characters classified to tectonically active due to erosion.

The extracted imagery of DEM and Landsat 8 lineaments are analysis using the lighting of azimuth angle, and for the azimuth, straightness showing different directions and does not follow the same pattern. The direction of the azimuth lineaments from DEM 0°-45°-90°-135° show almost has a similar rose diagram with band 7 that higher concentration in the northeast to southwest. DEM 80°-225°-270°-315° shows a higher concentration in the northwest to southeast trend. The azimuth lineaments direction band 8 show east-west, north-south, northeast-southwest, and northwest-southeast trend.

Map of DEM 0°-45°-90°-135°, DEM 80°-225°-270°-315°, Landsat band seven and band 8 shows the classification of lineaments into three sections, which is a draw to the lines of interpretation as structure boundary that cross-cut the lineaments of northeast-southwest direction, as shown in Fig. 1.

Table 1 Morphometric variable to recognize the active tectonic activity.

Morphometry	Stream			
	Gendol	Opak	Kuning	Boyong
Rb	4.3	2.4	2.2	1.5
Dd	4.5	3.9	3.4	4.8
Smf	1.4 to 2.8			
Vf	0.001 to 0.370 and 1.207 to 15.293			
AF	32.0	16.7	31.9	19.4
SL	5.9	12.2	8.6	8.8
Hi	h/H 0.4 a/A 0.5	h/H 0.6 a/A 0.4	h/H 0.4 a/A 0.5	h/H 0.4 a/A 0.4
T	0.65	0.47	0.63	0.87
Eb	0.004	0.003	0.003	0.003

The structure of the compartment had three sections, the northern compartment as a zone A. The central section as a zone B, and the southern section as a zone C. The boundaries of the A zone of the structure compartment are 750-meter to 400-meter elevation. The boundaries of the second B zone of the structure compartment are 400-meter to 300-meter elevation, and C zone of the structure compartment is 300-meter to 150-meter elevation.

Hierarchical cluster analysis indicates that the groundwater depth divided into three clusters. This cluster is shown in Fig. 2 on the cluster map and the piezometric pattern in Fig. 3. There was the same interpretation between the structure compartment zone, as shown in Fig. 1, with the division of the piezometric cluster, as shown in Fig. 3.

The structure in each zone A, B, and C corresponds to each cluster one, two, and three piezometric geometry profile. The groundwater table usually follows the local topography [20]. In the profile of topography geometry and piezometric as shown in Fig. 4, groundwater flows from north to south, vertically faulting with normal fault.

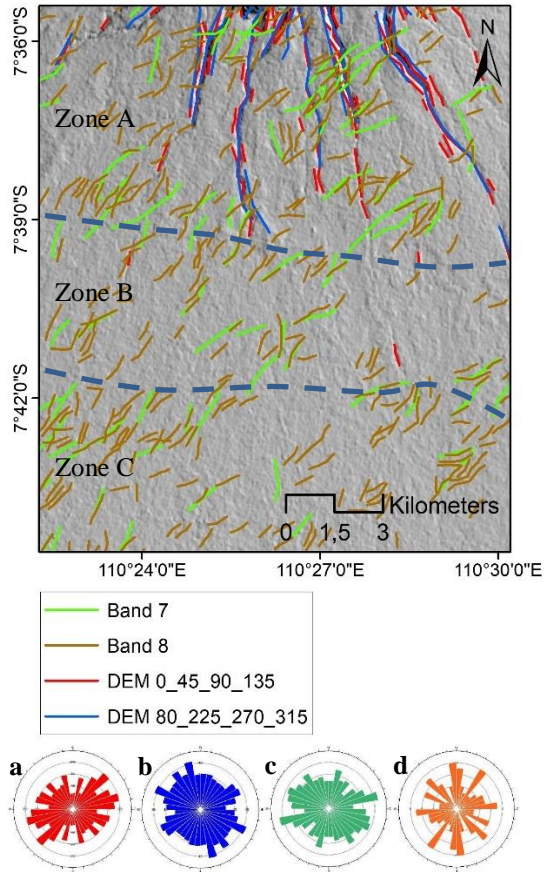


Fig. 1 Lineaments of Landsat and DEM showing the different paths and different direction. Band 7 (a), band 8 (b) DEM 0-45-90-135 (c), and DEM 80-225-270-315 (d), all lineaments trends differently.

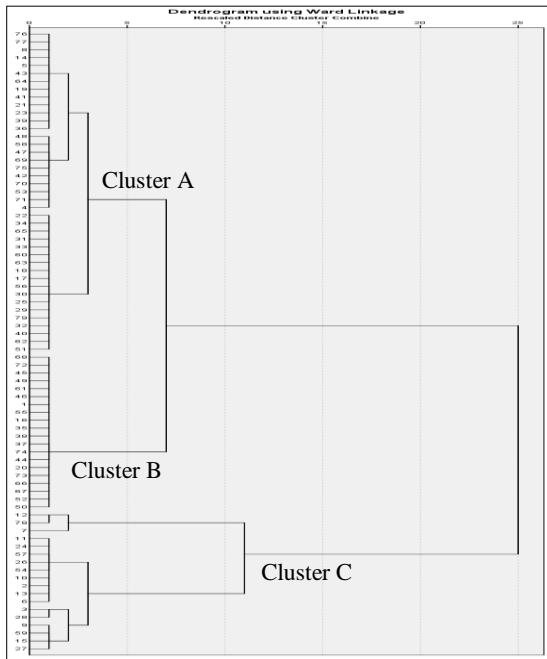


Fig. 2 Dendrogram divided by hierarchical cluster analysis to three clusters.

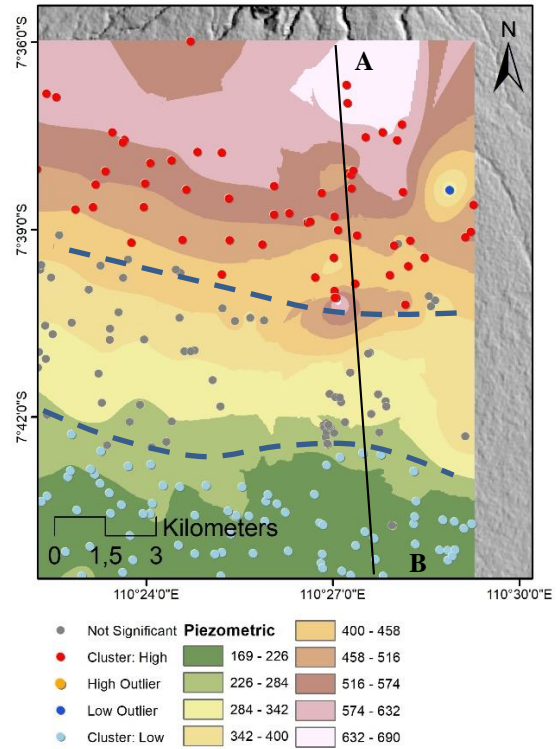


Fig. 3 Piezometric of weighted features, identifies statistically significant groundwater level and spatial outliers using the cluster analysis.

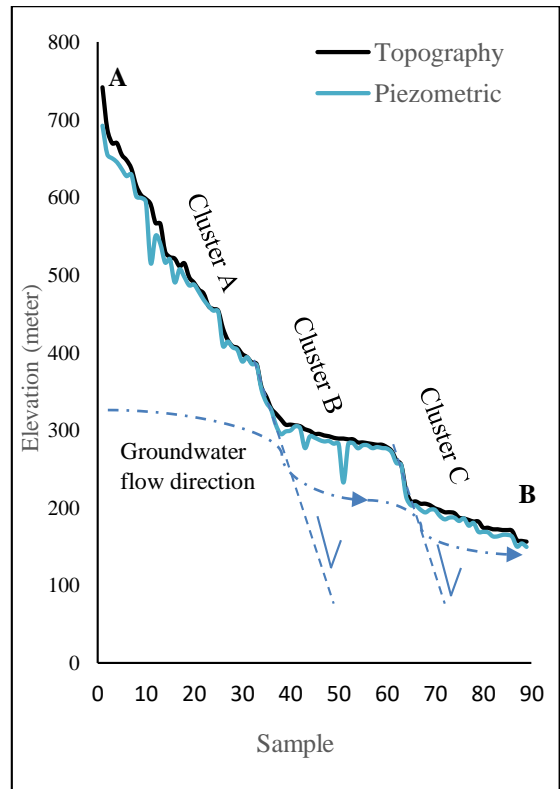


Fig. 4 Profile of topography geometry and piezometric shows divided zone that conformable with structure.

Statistics calculations used for each zone are the minimum and maximum values of depth, and the height of groundwater, the sinuosity of the mountain front (Smf) and the valley ratio (Vf). The value of the relationship between the geological structure with changes in the depth and height of groundwater levels, which then compared with the values of Smf and Vf.

Table 2 Statistics calculations used for each zone are the minimum and maximum values of depth, and the height of groundwater.

Zone		Gendol		Opak	
		Depth	Height	Depth	Height
A	Min	4	4	4	9
	Max	50	64	68	50
B	Min	1	1.2	1	1
	Max	33	50	45	10.9
C	Min	2	1.6	3	2.6
	Max	22	22	10	10

Table 3 Statistics calculations used for each zone are the minimum and maximum values of the mountain front (Smf) and the valley ratio (Vf).

Zone		Smf		Vf	
		Gendol	Opak	Gendol	Opak
A	Min	0.294	0.448	0.021	0.001
	Max	0.550	0.553	40	7.675
B	Min	0.397	0.484	0.711	0.429
	Max	0.533	0.728	10	6.667
C	Min	0.408	0.523	1.052	0.533
	Max	0.476	0.540	14.286	20.571

Zone A Gendol River with a range of values: groundwater depth 4 meters to 50 meters, groundwater level 4 meters to 68 meters, Smf with values of 0.294 to 0.550, Vf with values of 0.021 (high uplift) to 40 (very low uplift). Zone A Opak River with a range of values: depth of groundwater level of 4 meters and a maximum of 68 meters, groundwater level of 9 meters to 50 meters. Smf value of 0.448 to 0.553, Vf value of 0.001 (high uplift) to 7.675 (very low uplift), as shown in Table 2 and Table 3.

Zone B in the Gendol watershed shows the range of values: groundwater depth of 1 meter to 33 meters, groundwater level height of 1.2 meters to 50 meters, Smf value of 0.484 to 0.728, Vf value of 0.711 (moderate uplift) to 10 (low uplift). Zone B in the Opak watershed shows the range of values: groundwater depth 1 meter to 45 meters, groundwater level 1 meter to 10.85 meters, Smf values 0.523 to 0.540, Vf 0.429 (high uplift) to 6.667 (low uplift), as shown in Table 2 and Table 3.

Zone C in the Gendol watershed shows the range of values: groundwater depth of 2 meters to 22 meters, groundwater level height of 1.6 meters to 22 meters, Smf value of 0.408 to 0.476, Vf value of 1.052 (low uplift) to 14.286 (very low uplift). Zone C in the Opak watershed with a range of

groundwater depths of 3 meters to 10, groundwater level height of 2.6 meters to 10. Smf values of 0.523 to 0.540, Vf with a minimum value of 0.533 (moderate uplift) and a maximum of 20,571 (very low uplift), as shown in Table 2 and Table 3.

Groundwater flows directions depicted on the piezometric map with the kriging method flowing from the northeast direction with higher elevations to the southwest with lower elevations. The following is an illustration of a piezometric map showing the direction of groundwater flow and groundwater level in each zone.

Groundwater flow follows the direction of the slope of the rock layer, and in the direction of the slope, this shows that the recharge originates from higher elevations, especially from zone A to zone B and continuously to zone C.

Geological structure lineaments act as a boundary toward groundwater flow and lithology slope between different structural divisions. The northeast-southwest-directed structure is a structure used by groundwater flow to connect to the zone above or below, which also functions as a barrier to groundwater flow from north to south.

The results of the ANOVA statistical analysis showed that the groundwater depths of zone A, zone B, and zone C were utterly different. Correlation test results show a reasonably strong correlation between the variable direction of flow and depth of groundwater, and the results of regression tests show the direction of flow and depth of groundwater affect the structure azimuth.

From the ANOVA test, the F count is 12.43 with a significance level or probability of 0.000, a probability of less than 0.05 then the regression model can be used to predict the structure azimuth, or the direction of flow and depth of groundwater affect the structure azimuth, as shown in Table 4.

Table 4 ANOVA with structure azimuth as the dependent variable.

Model	Sum of Squares	df	Mean Square	F	Sig.
Regression	43319.80	2	21659.90	12.43	0.000 ^a
Residual	132410.57	76	1742.24		
Total	175730.38	78			

a. Predictors: (Constant), Groundwater depth, groundwater flow.

Table 5 Coefficient with structure azimuth as the dependent variable.

Model	B	Std. Error	Beta	t	Sig.
(Constant)	-3.631	33.009		-0.110	0.913
Flow	30.63	6.635	0.509	4.616	0.000
Depth	0.118	0.410	0.032	0.289	0.774

Regression equation with structure azimuth (Y) is related to the groundwater flow direction (X_1) and groundwater depth (X_2), as in

$$Y = (-3.631) + 30.629 X_1 + 0.188 X_2 \quad (10)$$

A constant of unstandardized coefficients (B) - 3.631 states that if the direction of flow is absent or there is no groundwater depth, the azimuth direction of the structure is 3.631° . Regression coefficient X_1 of 30.629 states that any change in groundwater flow direction 1° will change the direction of the structure azimuth by 30.662° . The regression coefficient X_2 of 0.188 states that each additional 1-meter groundwater depth will change the azimuth structure direction of 0.188° , as shown in Table 5.

T-test intent to test the significance of constants and dependent variables (groundwater flow) as seen in the numbers Significance or probability value below 0.025, both significant regression coefficients or groundwater flow direction have a significant effect on azimuth structure, while groundwater depth is not significant.

4. CONCLUSION

The study of the structure compartment on the southern Merapi volcanic slope using a method that combines quantitative morphotectonic with piezometric characteristics. The combination is verified with statistical data analysis to prove that lineament forming due to active tectonic structure.

The morphometry initiation results in the classification of DEM and Landsat lineaments into three sections, as structure boundary that cross-cut the lineaments. The structure compartment had three sections, as a zone A, zone B, and zone C. Also shows the hierarchical cluster analysis classified into three clusters, it has defined the interpretation of spatial dependencies.

The results of a statistical analysis of the ANOVA, correlation test, and regression tests showed every groundwater depths of zone A, zone B, and zone C were utterly different. The direction of flow and groundwater depth have a strong correlation, and it affects the structure azimuth.

The equation of regression $Y = (-3.631) + 30.629 X_1 + 0.188 X_2$, mention that groundwater flow direction has a significant effect on azimuth structure, while groundwater depth is not significant. Any change in groundwater flow direction will change the direction of the structure azimuth. The relationship between groundwater compartments, the structure becomes the controller of the groundwater depth distribution, besides the Quaternary lithology.

5. ACKNOWLEDGMENTS

This paper is part of Doctoral research at Universitas Padjadjaran. The author would like to thank Head of University Padjadjaran for financial support by the 2019 RKDU Scheme and everyone for their help during this research.

6. REFERENCES

- [1] P. D. Dinar, Sarino, Y. A.L., J. C. Imroatul and H. S.A., Integration of Surface Water Management in Urban and Regional Spatial Planning, *International Journal of GEOMATE*, 2018, vol. 14, no. 45, pp. 28-34.
- [2] E. Sukiyah, E. Sunardi, N. Sulaksana, and P. P. R. Rendra, Tectonic Geomorphology of Upper Cimanuk Drainage Basin, West Java, Indonesia, *International Journal on Advanced Science Engineering Information Technology*, 2018, vol. 8, no. 3, pp. 863-869.
- [3] X. Shi and B. Xue, Deriving a Minimum Set of Viewpoints for Maximum Coverage Over Any Given Digital Elevation Model Data, *International Journal of Digital Earth*, 2016, pp. 1-15.
- [4] B. Wolosiewicz, Morphotectonic control of the Bialka Drainage Basin (Central Carpathians): Insights from DEM and Morphometric Analysis, *Contemp. Trends. Geosci*, 2016, vol. 5, no. 1, pp. 61-82.
- [5] R. Kaplay, M. Babar, S. Mukherjee, and T. Kumar, Morphotectonic Expression of Geological Structures in The Eastern Part of The South East Deccan Volcanic Province (around Nanded, Maharashtra, India), *Tectonics of the Deccan Large Igneous Province*, 2016.
- [6] A. Petrik and G. Jordan, Systematic Digital Terrain Model Construction And Model Verification With Multi-Source Field Data. Morphotectonic Analysis In The Villany Hills and Its Surroundings, SW Hungary, *Carpathian Journal of Earth and Environmental Sciences*, 2017, vol. 12, no. 1, pp. 217-224.
- [7] B. Bali, A. Wani, R. Khan, and S. Ahmad, Morphotectonic Analysis of the Madhumati Watershed, Northeast Kashmir Valley, *Saudi Society for Geosciences*, 2016, vol. 9, no. 390, pp. 1-17.
- [8] R. Gertisser, S. J. Charbonnier, J. Keller dan X. Quidelleur, The Geological Evolution of Merapi volcano, Central Java, Indonesia, *Bulletin of Volcanology*, 2012, vol. 74, no. 5, pp. 1213-1233.

- [9] G. Buchanan, A. Beresford, M. Hebblewhite, F. Escobedo, H. De Klerk, P. Donald, P. Escribano, L. Koh, J. Martínez-López, N. Pettorelli, A. K. Skidmore, Z. Szantoi, K. Tabor, M. Wegmann, and S. Wich, *Free Satellite Data Key to Conservation*, Science, 2018, vol. 361, no. 6398, pp. 139-140.
- [10] H. T. Verstappen, *Applied Geomorphology: Geomorphological Surveys for Environmental Development*, New York: Elsevier Science Pub. Co. Inc, 1983, p. 437.
- [11] A. Strahler, *Quantitative Analysis of Watershed Geomorphology*, Transactions, American Geophysical Union, 1957, pp. 913-920.
- [12] J. C. Doornkamp, *Geomorphological Approaches to the Study of Neotectonics*, *Journal of the Geological Society*, 1986, vol. 143, no. 2, pp. 335-342.
- [13] W. Bull and L. D. McFadden, *Tectonic Geomorphology North and South of the Garlock Fault, California*, in In: Doehring, D.O. (ed.) *Geomorphology in Arid Regions Eighth Annual Geomorphology Symposium*, New York, 1977.
- [14] P. Molin, F. Pazzaglia and F. Dramis, *Geomorphic Expression of Active Tectonics in a Rapidly-Deforming Forearc, Sila Massif, Calabria, Southern Italy*, *American Journal of Science*, 2004, pp. 559-589.
- [15] R. Kaplay, M. Babar, S. Mukherjee, and T. Kumar, *Morphotectonic Expression of Geological Structures in The Eastern Part of The South East Deccan Volcanic Province (around Nanded, Maharashtra, India)*, *Tectonics of the Deccan Large Igneous Province*, 2016.
- [16] E. Keller and N. Pinter, *Active Tectonics. Earthquakes, Uplift, and Landscape*, 2nd ed., New Jersey: Upper Saddle River, N.J.: Prentice-Hall, c2002, 1996, p. 362.
- [17] R. J. Pike and S. E. Wilson, *Elevation-Relief Ratio, Hypsometric Integral, and Geomorphic Area-Altitude Analysis*, *Bulletin of the Geological Society of America*, 1971, vol. 82, no. 4, pp. 1079-1084.
- [18] R. T. Cox, *Analysis of Drainage-Basin Symmetry as a Rapid Technique to Identify Areas of Possible Quaternary Tilt-Block Tectonics: An example from the Mississippi Embayment*, *The Geological Society of America Bulletin*, 1994, vol. 106, no. 5, pp. 571-581.
- [19] S. A. Schumm, *Evolution of drainage system and slope badlands at Perth Amboy, New Jersey*, *Geological Society of America Bulletin*, 1956, vol. 67, no. 5, pp. 597-646.
- [20] T. L. R.A., N. Sulaksana, B. Y. CSSSA and A. Sudradjat, *Topographic Control on Groundwater Flow in Central of Hard Water Area, West Progo Hills, Indonesia*, *International Journal of GEOMATE*, 2019, vol. 17, no. 60, pp. 83-89.