

# Geochemistry Acidic Water of Banyupait River Effect Seepage of Crater Water Ijen Volcano, Asembagus, Indonesia

*by Dwi Fitri Yudiantoro*

---

**Submission date:** 30-Aug-2022 02:39PM (UTC+0700)

**Submission ID:** 1889300799

**File name:** 2\_13768-40632-1-PB-ijen\_yudiantoro-30\_Juni\_22.pdf (2.36M)

**Word count:** 10527

**Character count:** 52895

## Geochemistry Acidic Water of Banyupait River Effect Seepage of Crater Water Ijen Volcano, Asembagus, Indonesia

Dwi Fitri Yudiantoro <sup>a,\*</sup>, Bambang Agus Irawan <sup>b</sup>, Intan Paramita Haty <sup>a</sup>, Dewi Sri Sayudi <sup>c</sup>, Arum Suproborini <sup>d</sup>, Sekar Bawaningrum <sup>a</sup>, P. Ismaya <sup>a</sup>, Mirzam Abdurrachman <sup>e</sup>, Isao Takashima <sup>f</sup>, T. Wikaningrum <sup>g</sup>

<sup>a</sup> Geology Engineering Department of UPN Veteran Yogyakarta, 55283, Indonesia

<sup>b</sup> Environmental Engineering Department of UPN Veteran Yogyakarta, 55283, Indonesia

<sup>c</sup> Geology Agency, Yogyakarta, 55166, Indonesia

<sup>d</sup> Pharmacy Study Program of PGRI University Madiun, 63118, Indonesia

<sup>e</sup> Geology Engineering Department of ITB Bandung, 40116, Indonesia

<sup>f</sup> Geological Department of Akita University, 010-8502, Japan

<sup>g</sup> President University Jakarta, 17550, Indonesia

Corresponding author: \*d\_fitriyudiantoro@upnyk.ac.id

**Abstract**— The Ijen volcano has the Pleistocene age, and this stratovolcano was very acidic crater water with a pH of 0-1. The acidic water seeps into the Banyupait River. Asembagus is a research area located on the northern slope of the Ijen volcano, and the Banyupait River drains this. This study used several different analytic methodologies with some previous researchers, namely geological mapping, pH measurement, spectrophotometry, IRMS (Isotope Ratio Mass Spectrometer), and the technique of Induced Coupled Mass Spectrometry (ICP-MS). Besides, the petrographic analysis is used to determine rock minerals' composition due to rocks interacting with acidic water. Banyupait River water in the Asembagus area has a pH of river water around 3-7.3, SO<sub>4</sub> (220-683 ppm), and the type of water is meteoric water. Also, Ca, K, and Mg concentrations in the west Banyupait river irrigation water flow showed higher levels than the eastern. Likewise, REE elements from the Asembagus region showed lower concentrations compared to Ijen Crater water. This change in the level of chemical elements is caused by the Banyupait River's acidity being diluted or mixed with water from other water. The process of acidic water interaction with rocks can also be observed from rocks traversed by the Banyupait River flow. Chalcedony and hematite replace the primary minerals of basaltic rocks. This research is expected to improve the quality of water needed by the Asembagus community to live healthily.

**Keywords**— Stratovolcano; crater; acid water; geochemistry; health.

Manuscript received 23 Nov. 2020; revised 30 Apr. 2021; accepted 12 Jun. 2021. Date of publication 30 Jun. 2022.  
IJASEIT is licensed under a Creative Commons Attribution-Share Alike 4.0 International License.



### I. INTRODUCTION

Indonesia has around 129 active volcanoes, or 13% of the total volcanoes globally, because Indonesia is located at the confluence of the Eurasian Plate, the Indo-Australian Pacific Plate. The research is situated in Asembagus Situbondo, the northern slope of the Ijen Volcano. Ijen Volcano is very active, and the eruption center often moves. Eruptions occurred in 1796, 1817, 1917, 1936, 1952, and 1993, 2000, and 2001. The watercolor of the crater lake was light green, indicating very acidic water. Some studies revealed that the pH value of shallow crater water (0-1) [1]–[5]. Based on its morphology, the Banyuputih River stream consists of

tributaries: Banyupait, Blawan, Kalisat, Sengon, Banyuputih 1, and Banyuputih 2 Rivers to the north of Blawan [6].

The Banyupait River flows through the Asembagus area. It has a population of around 660,702 people with an agricultural region of 60,597.34 ha. Some Asembagus agricultural areas are fed by this Banyupait River acidic water, especially the western Banyupait River, while the east Banyupait River water flows continuously towards the sea. For this reason, it was necessary to do this research, which intended to determine the distribution of chemical elements in the Banyupait River acid water. The concentration and water characteristics of the Banyupait River can be used to monitor public health Asembagus.

### A. Geology of Ijen Volcano

The Ijen Caldera Complex (ICC) is morphologically a caldera depression. Inside the crater, there was the Ijen Crater and Merapi Volcano [7]. Ijen Crater was elliptical due to the displacement of the crater pipe [8], which was a large stratovolcano [5]. Besides, this Ijen Crater was a lake size 910 m x 600 m 148 with a depth of 200 m. The ICC is formed in the Pleistocene period [6] based on cone collapse, and the ICC stratigraphy is divided into three groups, e.i. Pre-caldera volcanic deposits, caldera, and Post-caldera.

1) *Pre-caldera Volcanic Deposits:* The Pre-caldera volcanic deposits of Upper Pleistocene ( $294.00 \pm 0.03$  Ma) were revealed both on the north wall of the caldera and in the old volcanic morphology south of the caldera. These two old morphologies are the remains of the cone of Old Ijen Volcano. The Pre-caldera volcanic deposits include pyroclastic flow deposits and lava flows. The lava flows were revealed at the Ijen Crater base, which was  $297.00 \pm 0.03$  Ma (K-Ar method) with a composition of basalt, andesite, and dacite [9].

2) *Caldera Volcanic Deposits:* The large caldera volcanic deposit consists of ignimbrite and pyroclastic fall deposits, which spread out of the caldera [10]. They cover the entire north side of the caldera. The ignimbrite of caldera volcanic deposits is characterized by the interbedded pyroclastic flow sequences, pyroclastic fall deposits, and lahars. The pyroclastic fall deposits of caldera formations are fragmented pumice and are inserted by pyroclastic flows and pyroclastic surges. The caldera formation occurs between 300,000 (Pre-caldera deposits youngest) and 50,000 (Post-caldera deposits oldest) years ago [6] through the collapse of the Old Ijen stratovolcano. The non-volcanic structure then developed inside the caldera, as a lake, which was emptied ~50,000 years ago due to a fault system that cut the walls of the northern Kendeng caldera [6] (Fig. 1).

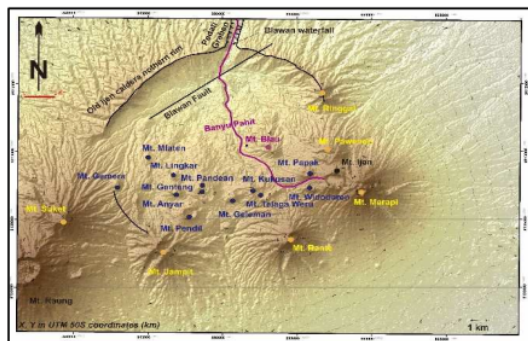


Fig. 1 Map showing Pre-caldera Ijen and active volcanic formations and faults (modified from [7]).

3) *Post-caldera volcanic deposits:* The appearance of the Blawan lake sediment deposits on the floor of the Ijen Caldera marks the beginning of Post-caldera sedimentation. In Blawan, these lake deposits are characterized by alternating shale, sand, and travertine deposits. Besides, the river deposits are found cross-bedding and parallel lamination structures covered by lahar deposits.

Based on the eruption center's distribution pattern, the post-caldera volcanic deposits can be grouped into two parts: the

sides and the caldera. The volcanic cones on the caldera sides include Mt. Jampit (Pendil), Mt. Ringgih, Mt. Suket, Mt. Rante, Mt. Merapi, and Mt. Ijen. In contrast, the inside of the caldera is dominated by cinder cones such as Mt. Widodaren, Mt. Cilik, Mt. Gempol, Mt. Kawahwung, Mt. Anyar, Mt. Lingker, Mt. Mlaten, Mt. Cemara, and Mt. Gendingwaluh with several composite cones (Mt. Blau, Mt. Pawenen, Mt. Kukusan, and Mt. Genteng), Mt. Geleman dome and pyroclastic cone of Mt. Papak. The Post-caldera volcanic deposits vary significantly in type, consisting of pyroclastic flows and falls, pyroclastic surges, lahar, debris avalanche, and lava flows.

Similarly, the types of eruptions, such as magmatic, phreatomagmatic, and phreatic, range from Strombolian to Plinian [11]. In comparison, the Post-caldera volcanic center consists of several separate volcanic cones (Fig. 1). They spread in the southern part of the caldera. About 25,000 years ago, 13 intra caldera cones were scattered in the E-W direction, starting from the Mlaten to the active Ijen Crater [6]. This direction was in line with the tectonic alignment [12]. This volcano erupts with high Ca basaltic-andesite magma composition, while the intra caldera volcanoes erupt with basaltic-andesite to low-dacitic magma composition [6], [13].

The active stratovolcano has an andesitic-to-andesitic basalt composition [14]. Based on the geochemical analysis of several lavas from Ijen and Mt. Anyar Craters [6], explain in general that these lavas can be classified into basalt, andesite basaltic, and basaltic trachyandesite with a medium-high K calc-alkali series. Ijen volcanic rocks with basaltic composition, basaltic, andesitic, and dacite. Besides, hypersthene augite andesite was the Pleistocene age [15], [16]. The development of magmatism on the Java Island during Tertiary to Quaternary experienced chemical changes, i.e., changes in magma affinity, which shifted from low K tholeiitic island arc (Tertiary volcanic arc) to calc-alkali series (Quaternary Sunda Arc) which Ijen Volcanoes are formed [7].

There are three normal faults in the ICC that can be grouped into two deformation periods of fault formation. A graben structure marked the initial phase, and Blawan and Jampit's presence announced the final stage. The Blawan Fault shows a low resistivity zone reaching a depth of 1,250 m below sea level [17]. The graben structure Pedati formed after the Ijen Caldera. The Pedati fault graben movement was younger than the unit ignimbrite the formation of the caldera and older than the sediment of Blawan Lake (50,000 years).

The final phase involves the movement of the formation of the Blawan and Jampit faults. The Blawan fault movement occurred after the eruption of the young lava flows of Blau Volcano and before the deposition of the scoria pyroclastic from lower ICC. Jampit fault is characterized by a fault scarp on the lava flow of the Jampit cone. Around the Cemara cone, the Jampit fault is covered by pyroclastic-flow deposits of the Suket Volcano ( $37,900 \pm 1850$  years) and pyroclastic scoria deposits ICC between 37,000 to 45,000 years [9].

Blau Cone (1774 m asl.) was the residual debris of Strato Old Ijen Volcano [6], [15]. Three lava flows were very clear erupted by Blau Volcano. The older lava flows were basalt, acid andesite, and the younger was acidic andesite lava flows. The caldera must be formed after the eruption of the young lava flows of Blau Cone.

## B. Eruption History

Rocks were found in the Ijen Crater, i.e., tephra deposits (scoria, ash, pumice, bombs), volcaniclastic flows, and pillow lava that can only be seen in the crater [6], [12]. These stratovolcanoes in each eruption center produce various eruption products, such as lava, pyroclastic flow, and pyroclastic fall [9].

The Ijen eruption recorded in history is in the form of phreatic eruptions originating from the central crater [1]. The explosion of Ijen Volcano emits gas, pyroclastic material consisting of lapilli, ash, and volcanic bombs, all of which were pumiceous. The Ijen Volcano at ~ 24,450 BP entered a destructive phase with a massive peak explosion, and lava flows to the south [6].

Over the past two decades, this volcano has experienced many phreatic eruptions and produced pyroclastic fall deposits consisting of ash, fragments, and sulfur particles. The first eruption of the Ijen Volcano is recorded in 1796 [6]. On January 15, 1817, the volcano entered the eruption phase, with the biggest eruption occurring in late January [12]. The possibility of the eruption of 1817, most of the lake water is flowed by the Banyupait River.

Increased Ijen volcanic activity is characterized by the emergence of gas bubbles and a sudden temperature rise. Before the eruption, in March 1917, the Ijen crater water temperature was 15°C at the end of 1917. However, in 1925, 1934, 1936, and 1956, strong eruptions erupted water and mud to reach tens of meters high. Before the February 1921 eruption, the temperature of the crater increased to 50°C [2]. The 1 km high explosion of smoke and the sound of the avalanches heard from Sempol occurred on April 22, 1952, and in the crater, a 7 m high eruption occurred. This eruption is almost the same as the 1936 eruption [18].

Moments before the 1997 explosion, there was a change in the color of the crater lake. The increase in Ijen Crater activity is also observed in early April 1999. The crater activity showed an increase in seismic activity so that on April 12, 1999, it was declared alert. In May 1999, shallow volcanic earthquakes dominated events, and on June 23, a small eruption is recorded. On June 28, 1999, two recorded eruptions [2]. This phreatic eruption last occurred in 1999 [18]. The 1990s and early 2000s were phreatic eruptions [19]. In contrast, the crater's current condition as a volcanic activity centered on the rhyolitic dome [12] was about 100 m in diameter and 20 m high, which was the location of many high-temperature fumaroles [20].

## II. MATERIALS AND METHODS

### A. Study Area

The study area's morphology was undulating hills to the coastal plain, which is located in the Situbondo Asembagus region (Fig. 2), with a population of 2013 that has reached 660.702 people. The research area includes Asembagus, Banyuputih, and Jangkar. The altitude area ranged from 0 m to the north and an altitude of 50-800 m in the south, which was the northern slopes of the Ijen volcanic complex's foothills and had an annual temperature of 24.7°C-27.9°C.

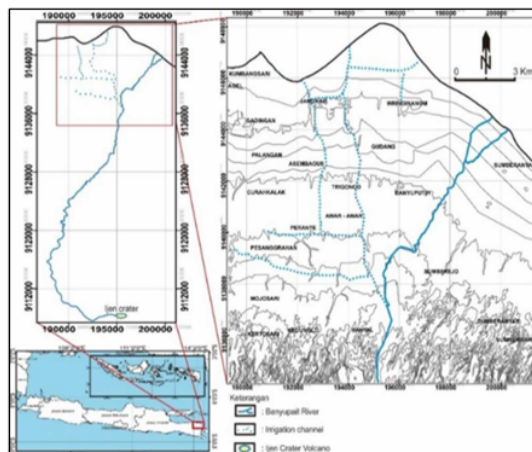


Fig. 2 Map of the location of the Asembagus area, which is a research area.

The dry months are the months with average rainfall in one month less than 60 mm/month. In contrast, the wet months have an average rainfall of more than 100 mm/month. The average monthly rainfall of 60-100 mm/month is ignored. Most of the fertile soil fed by water from the Banyupait River contaminated waste from the crater lake, which is very acidic, about 40 km to the south. This lake has a pH below 0.3 and contains around 1500 mg/l F, while river water ranges between 2.5 and 4.5, and includes 5 to 14 ppm F at the entry point of irrigation, which is also used for bathing and washing. During the dry season (April to October), all waters are discharged into the irrigation network through the sluice system, while the excess water during the rainy season (November to March) is directed into the sea through the original riverbed. It is estimated that, on average, 2800 ppm F is discharged into irrigation areas per day [3].

### B. Analysis Tools

This research aims to study the behavioral characteristics of the Banyupait River water's chemical elements. The river water is influenced by the acid water of the Ijen Crater and explores the water characteristics around the Banyupait River, such as springs and wells water. Besides this, the Banyupait River water certainly has fascinating aspects because the water's acidity was very low due to the seepage of Ijen Crater Lake, so during the trip to the estuary, the river will experience changes in the concentration of REE elements. Infiltration of Ijen Crater water in the Banyupait River has been going on for a long time to affect the concentration of the surrounding water. Besides that, residents used water for agriculture or some residents to meet their daily needs.

To study the characteristics of the geochemistry of Asembagus, so laboratory analysis was needed. Such as pH measurement and the chemical analysis of water using spectrophotometry, IRMS (Isotope Ratio Mass Spectrometer), Induced Coupled Mass Spectrometry (ICP-MS) method. Whereas, to determine the composition of the rock minerals, we use a petrographic thin section analysis. This chemical water analysis is carried out on several water samples originating from the Banyupait River water, well, and spring water.

Measurement of water pH is carried out to determine the acidity of rivers, springs, and wells located around the Banyupait River. Samples taken were 15 samples of river water, 24 samples from wells, and 1 sample of spring. Meanwhile, to study water geochemistry, nine water samples were taken. In contrast, the analysis of SO<sub>4</sub> content is used to determine the concentration of SO<sub>4</sub> in water that has an acidic pH. Analysis of SO<sub>4</sub> and cation-anions content using spectrophotometric methods.

The isotope <sup>18</sup>O and D analyses are performed on nine samples using the IRMS method (Isotope Ratio Mass Spectrometer). Induced Coupled Mass Spectrometry (ICP-MS) is used to determine the distribution of REE changes from upstream of the Banyupait River to the coast or estuary. Before the analysis of isotopes and REE, water is filtered first with a 40 µm sieve. The REE analysis is conducted on nine samples whereas to find out the mineral composition of rocks using a petrographic thin section analysis performed on rock samples, which are considered to represent the rock of the study area.

### III. RESULTS AND DISCUSSION

#### A. Geology Asembagus

Geomorphologically the research area includes coastal plains, volcanic foot plains, and undulating hills. The coastal plain consists of the coastal regions with an altitude of 0 m spread over the northern part of the study area, i.e., Pesisir, Pondok Langgar, until Sukorejotimur (Fig. 3).



Fig. 3 The appearance of the morphology of the northern coastal plain of the study area and Mount Ijen in the south.

The rock constituent of this region is separated from the alluvial deposits of sand beaches. Foot plain was a morphological formation compiled by volcanic lahar breccia from the Bogor Formation, and this area includes Mojosari, Karangtengah, Gedangan, Banyuputih to Sekarputih. This area has a height between 0-50 m, while the undulating hills morphology has a height of 50-800 m, which is arranged by flow pyroclastic deposits from old Ijen (Fig. 4).



Fig. 4 The appearance of undulating hills morphology is compiled by pyroclastic breccia deposits.

The lithology of the study area was composed of Old Ijen volcanic rocks (Old Quaternary Volcanic Rock), which are thought to be Pleistocene [21]. The Holocene and alluvium Bogor Formations (Young Quaternary volcanoes) include river deposits, coastal deposits, and delta sediments. Old volcanic rocks consist of volcanic breccia, pumice breccia, tuff, and basalt lava. In contrast, the Bogor Formation rock alternates between various material breccias, pumice breccia, tuffaceous sandstones, and sandstones.

The mapping results in this research area indicate that the study area was composed of rock units from the order of old to young: Old Ijen pyroclastic breccias, Bogor lava breccia, and alluvial sediment of rivers and beaches (Fig. 11). The Old Ijen pyroclastic flows rock unit revealed in the study area includes: Mt. Banter, Bantal to the east (Pandre).

The lahar breccia of the Bogor Formation, which is an epiclastic sediment spread from Mojosari, Banyuputih to Sumberanyar. The more north from this deposit was the coastal deposits, consisting of loose sand, whereas river sediments are found around Banyupait, composed of free grains of sand and gravel to boulder size.

The Old Ijen volcanic pyroclastic breccia unit consists of pyroclastic flow breccias and pyroclastic fall breccias. The pyroclastic flow breccia deposits (Fig. 5) have thicknesses varying between 20-75 cm and more than 1 m.



Fig. 5 Shows the pyroclastic flow breccia deposits of the Old Ijen Volcano in the Bantal Village, consisting of basalt scoria and pumice.

These pyroclastic deposits were revealed well in Bantal Village. Deposition pyroclastic breccia flow shows the

layering structure and unsorted texture with moderate sand-gravel size. Angular-shaped fragments consist of scoria and pumice basalt embedded in a sand-sized volcanic material matrix. The pyroclastic fall breccia deposits (Fig. 6) show graded bedding structure and sized medium sand-gravel.

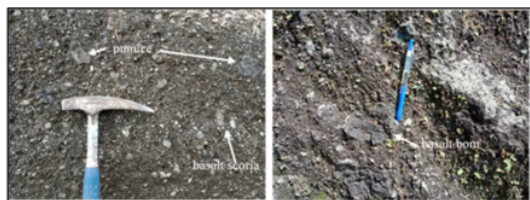


Fig. 6 Showing the pyroclastic fall breccia deposits with fragments consist of basalt (bomb, scoria) and pumice. Fragments with gravel sizes were subrounded in smaller volcanic material matrixes (sand-gravel).

Petrographically, this pyroclastic flow breccia was composed of angular-shaped fragments consisting of basalt scoria, plagioclase, quartz, and pumice embedded in a matrix of fine volcanic material (Fig. 7). In contrast, pyroclastic fall breccias with thicknesses vary between 20-50 cm exposed in Banger Village.

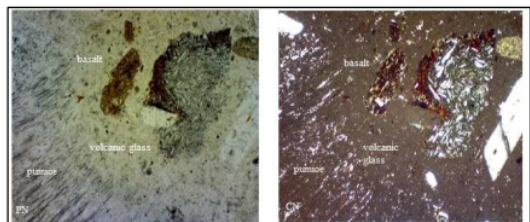


Fig. 7 A thin section of the petrographic of a pyroclastic flow breccia shows pumice and basalt fragments in a volcanic glass matrix. Basalt fragment shows the flowing texture of microlite plagioclase. PN: Parallel Nicol, CN: Cross Nicol.

The lahar breccia Bogor was exposed at Mojosari, showing the bedding structure and the size of medium-gravel sand (Fig. 8). Medium rounded fragments consisting of basalt scoria and a few pumice, these fragments embedded in sand-sized of the volcanic matrix. Petrographically, lahar breccia (Fig. 9) was composed of angular-shaped fragments consisting of basalt scoria fragment, lithic (pumice breccia), plagioclase, pyroxene, quartz, and hematite embedded in a matrix of the fine volcanic material. The hematite is formed due to rocks interacting with the acidic water of the Banyupait River (location at Sukorejo). This lahar breccia deposit is found in the area showing flat morphology and rocks appearing more compact than pyroclastic flow and fall deposits.



Fig. 8 Outcrops of lahar breccia show unsorted texture and subrounded basalt scoria fragments.

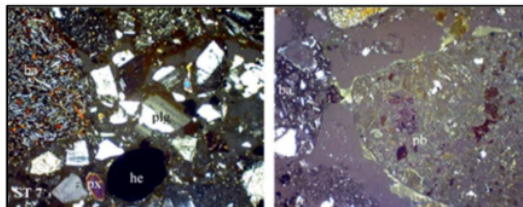


Fig. 9 Shows micrograph of basalt (ba) fragments, lithic (pumice breccia: pb), plagioclase (plg), pyroxene (px), and hematite (he) from the lahar breccia unit of Bogor Formation. Hematite is formed due to rocks interacting with the acidic water of the Banyupait River (location at Sukorejo).

The alluvial river unit was composed of loose sand-boulder-sized material spread on the riverside, especially in the Banyupait River flow (Fig. 10). The fragment consists of basalt, andesite, pumice, and boulder breccia with a rounded shape. Bedding and cross-bedding sediment structures were found generally in these deposits. At the base of the Banyupait River, rocks undergo oxidation due to acidic water river interaction with rocks. This phenomenon results in reddish-colored rocks and petrographic observations showing that pyroxene and plagioclase from basalt are replaced into hematite and chalcedony (Fig. 24).



Fig.10 Alluvial deposits in Banyupait River at Bantal.

Coastal deposits are coarse-sized sand deposits scattered on the coast. The sediment deposits were the result of the collapse of rocks in the upper of the Banyupait River from Mount Ijen and then transported by this river and deposited to the coast. In the river, bedrocks show a reddish color indicating the interaction of acidic water and rocks, the planar cross-bedding structure as the identifier of alluvial deposits.

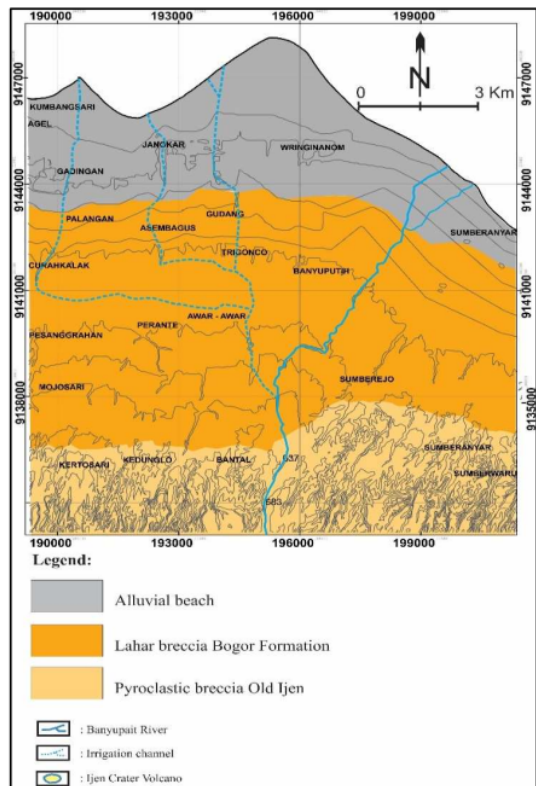


Fig. 11 Geological map of the study area.

### B. Water Geochemistry

The ICC was one of 63 volcanoes in Indonesia that have a crater. Ijen crater lake emits hot magmatic gas coming out from under the crater lake with acidic pH ( $\text{pH} < 1$ ) [9], [22], and it was the most significant natural acid lake in the world [5]. The value of lake pH for the past 50 years was consistently low ( $\text{pH} = 0\text{-}0.4$ ) and produced large amounts of native sulfur [3], [23]. It contains toxic elements including F, Al, Cd, and Tl, transported downstream by the Banyupait River, which residents will eventually use to irrigate agricultural land in the Asembagus area [24]. Also, it carries elements of Cl, F, Br, and metals (Se, As, Sb, Hg), and C and S. The emission composition mark of the Ijen Crater is similar to major volcanic emissions such as Etna but has an elemental flux the smaller one [24].

Lake water composition and chemical concentration are relatively homogeneous in the Ijen Crater Lake at depths of up to 100 m [1], [4]. The acidic lake leaked under the surface so that the crater water entered the river, the river water became acidic [9]. This very acidic Ijen Crater water has a concentration of nearly 500,000 tons of dissolved metal, including 200,000 tons of aluminum and 1,000 tons of titanium.

The Ijen volcanic crater contained very high concentrations of Cl, S, and F, the maximum concentration of Cl = 25,000 ppm, S total = 25,000 ppm, and F = 1300 ppm [22]. Hyperacidity water from the Banyupait river was periodically sampled between 2015 and 2018 [14]. It showed that during

the period from 2015-2016 to 2017, the fluid contained a higher proportion of elements originating from rock alteration. In early 2018, there was an increase in Cu due to a gas explosion in March 2018. This increase in meteoric water input led to increased water-rock interactions and the dissolution of the hydrothermal system's Cu-sulfide phases.

Crater lake water also contains total dissolved solids (TDS), an average of 102 ppm. Fluctuations in the chemical concentration of crater water are strongly influenced by the season. So the supply of magmatic chemical elements from fumarole/solfatara into the crater lake can be influenced by fluctuations in rainfall. The chemical composition of condensate solfatara Ijen Crater was very dangerous, because it contains  $\text{NH}_3 = 2,789.19$  ppm,  $\text{SO}_4 = 24,259.86$  ppm and  $\text{Cl} = 33,389.26$  ppm,  $\text{Ca} = 44.30$  ppm,  $\text{Al} = 36.24$  ppm,  $\text{SiO}_2 = 22,65$  ppm,  $\text{Fe} = 33.68$  ppm,  $\text{Mg} = 9.20$  ppm,  $\text{Na} = 4.08$  ppm and  $\text{Mn} = 0.56$  ppm [25].

Springs in the Banyupait River formed needles and gypsum blades, which precipitated during evaporation, forming a fine layer of gypsum cascade on the rocks [14]. The rocks exposed in the valley walls consist of a pyroclastic layer, lava flow, lahar, ash, and mud deposits. Consolidated lava deposits were common downstream, and these rocks also are seen at the bottom of the Banyupait River.

The Banyupait River is upstream in the Ijen Crater. In the Bantal area, the Banyupait River flow is divided into two lanes; namely, the east path is the Banyupait river flow that flows directly to the sea (the Madura Strait). While the west path is an irrigation channel built by the government to use for irrigation of agricultural land. Agriculture in the study area is predominantly inhabited by planting sugar cane because, in the Asembagus area, there is also a sugar cane factory built since the Dutch era. This research was carried out water sampling in the eastern Banyupait River flow and irrigation in the western Banyupait River. Water samples are taken from streams, irrigation, and wells, then pH measurements and water chemical analysis are carried out.

#### 1) pH and chemical composition of the Banyupait river:

The Ijen Crater dam was built during the Dutch era after discovering that the first eruption of Ijen had formed a crater and was filled with rainwater mixed with eruption material, which contained a lot of sulfur (sulfur). The dam's condition was currently experiencing a leak on the side and top so that the crater water flows directly following the Banyupait River flow. The river water coming out of the Ijen Crater dam has a pH between 0.35 - 0.89. The water condition was yellow, bubbly, smelled of sulfur. The steam, when it smells, was very stinging so that chemical reactions could occur to the rocks and soil around the river.

In the Belawan region, hot water has a water pH between 2.5 and 4.0. It was due to a mixture of water between the Banyupait, Ampar, and Kaligedang River. The watercolor shows cloudy, slightly foamy colors and low viscosity. The influence of other river water that enters the Banyupait River flow makes the water's pH slightly rise, and the water changes' physical condition. The Banyupait River water has a pH of 0.19 - 3.62, which flows along 3 km from the active crater [1].

[26] explains that the pH of water along the Banyupait River does not change until in residential areas, rice fields, and sugar cane plantations. The results of laboratory analysis

show that in the Banyupait River water, it leads the element content of fluoride (F) of 1.31 - 2.04 ppm; sulfate content (SO<sub>4</sub>) of 309.2 - 30.889 ppm and chloride (Cl) 8.69 - 3,928.43 ppm. The results of the sample water analysis from the population well, i.e., from shallow wells (depth <10 m), the pH was 6.35 - 7.50; fluoride content (F) of 0.15 - 1.42 ppm; in borehole wells with fluoride (F) content of 1.55 - 1.93 ppm; sulfate (SO<sub>4</sub>) content of 32.79 - 34.7 ppm and chloride (Cl) content of 2.47 - 12.45 ppm.

The Lewung and Samir Villages were the top locations of the Bantal Village. The community used the river water for bathing and washing. It is also used to irrigate rice fields for corn and sugarcane plants using waterwheels assembled by local communities. Pet cow and buffalo also use the Banyuputih River for bathing and drinking. Whereas the Sempol river, which is the right branch of the Banyupait River, shows an obvious hue. Residents use the springs for drinking water, and the water's pH is around 7.15 - 8.01. Kucing River was the left branch of the Banyuputih River, showing clear water hues, odorless, and used by residents as a source of drinking water.

2) *pH and SO<sub>4</sub> measurements*: The pH measurement of Ijen Crater Lake was consistently low, and it was between pH = 0-0.4 [3]. The research area was the northern slope of the Ijen volcano, which the Banyupait River passed. In this area, pH measurements were carried out on 23 locations along with the Banyupait River flow from Bantal Village to downstream, and pH measurements of wells were carried out on 24 sites.

The pH measurement of the Banyupait River is divided into two parts, i.e., the western Banyupait River and the eastern Banyupait River. The east part of the Banyupait River was a direct river flow from the Ijen Crater Dam, while the west part of the Banyupait River was a river whose water is used for rice field irrigation. This river flow to the downstream direction was regulated by residents with an open and close door of the dam system and mixed with artesian well water, so that river water was not too acidic and could be used for agricultural irrigation.

The pH of the western part of the Banyupait River ranges from 3.3-7.4, while in the eastern region, the pH is 2.7-7.1. The pH water of shallow wells around the western and eastern parts of the Banyupait River is relatively the same, between 5.8-7.2 (Fig. 12). In general, both the pH of river water and shallow wells further towards the sea indicates a higher pH or a neutral pH. If a flow chart is made that starts from the upstream of Bantal Village, the Banyupait River water's pH is around 2.7-7.1 (Fig. 13) and the pH of shallow well water around 5.8-7.2 (Fig. 14).

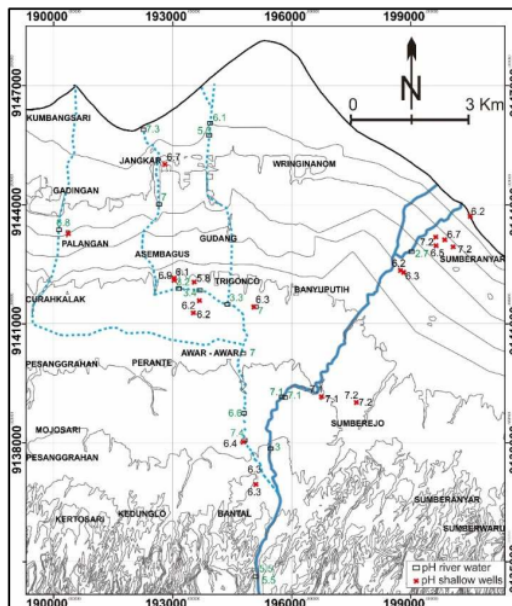


Fig. 12 Distribution of pH measurements of water samples.

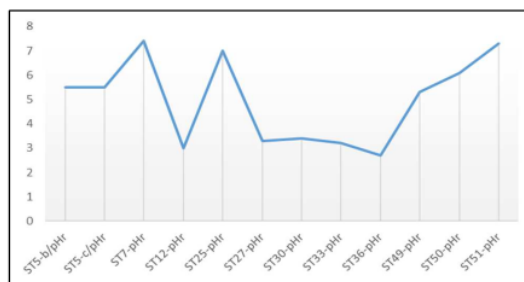


Fig. 13 Distribution of pH water samples of Banyupait River.

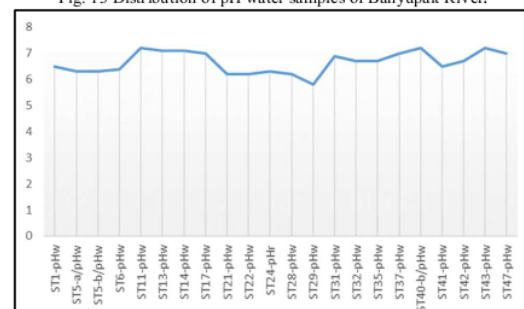


Fig. 14 Distribution of pH water samples from shallow wells.

The SO<sub>4</sub> content in Ijen Crater is around 24,259.86 ppm, while SO<sub>4</sub> in the study area is about 220-683 ppm (Fig. 15 and 16) [25]. The distribution of SO<sub>4</sub> concentration shows that SO<sub>4</sub> concentration from the Ijen crater towards the river mouth has decreased.



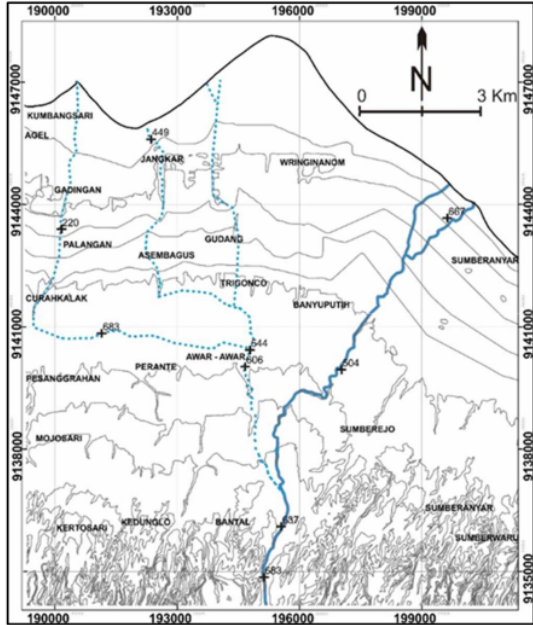


Fig. 15 Distribution of SO<sub>4</sub> measurements of water samples (+: SO<sub>4</sub> concentration in ppm).

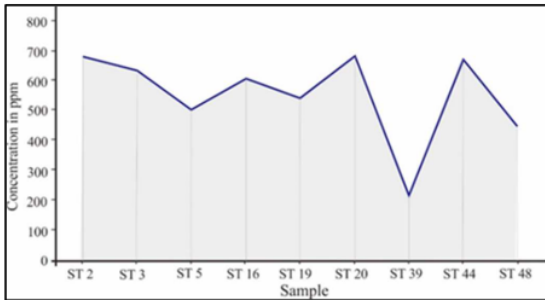


Fig. 16 Distribution of SO<sub>4</sub> measurements of water samples (in ppm).

3) *Cation and Anion*: The chemical composition of the solfatara condensate Ijen water contains Cl = 33,389.26 ppm, Ca = 44.30 ppm, Mg = 9.20 ppm, Na = 4.08 ppm and Mn = 0.56 ppm [25], [26]. While analysis of cation anions (Na<sup>+</sup>, K<sup>+</sup>, Ca<sup>2+</sup>, Mg<sup>2+</sup> and Cl<sup>-</sup>) conducted on eight water samples in the Banyupait River flow of the study area shows that the concentration of the cation-anion elements is Na<sup>+</sup> (10.743-260.558 ppm), K<sup>+</sup> (6.331- 28.451 ppm), Ca<sup>2+</sup> (9.181-79.093 ppm), Mg<sup>2+</sup> (6.313-43.835 ppm) and Cl<sup>-</sup> (2.350-434.61 ppm) see Table 1. These elements tend to the river estuary; the concentration of cations and anions has increased. Especially the Cl<sup>-</sup> anion, but when compared to the concentration of the Ijen crater cation-anion elements, the Banyupait River water cation-anion element showed an increase, except the Cl<sup>-</sup> element, which decreased (Fig. 17 and Fig. 18).

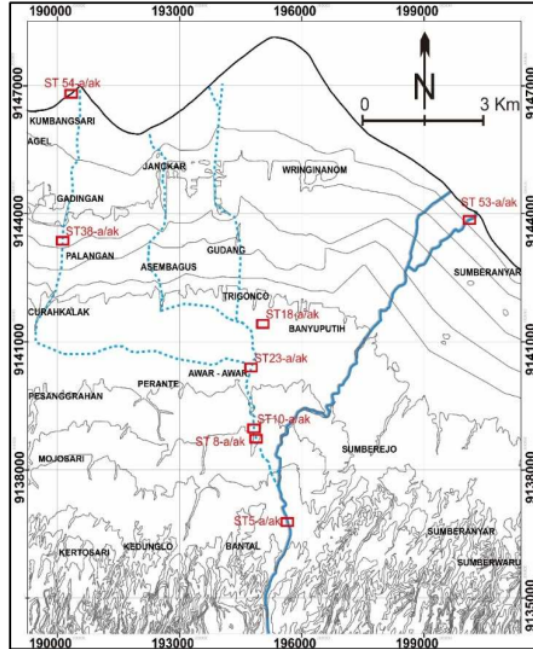


Fig. 17 Location cation-anion of water chemistry samples at the research area.

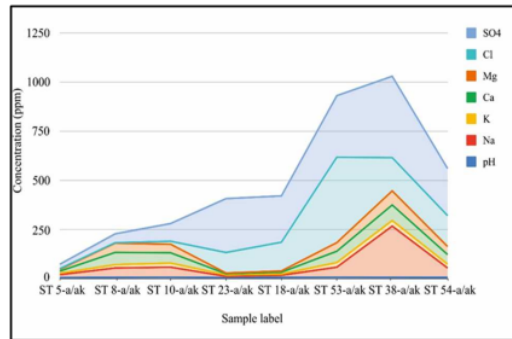


Fig. 18 Diagram of the anion-cation element (in ppm) of water chemistry samples at the research area.

4) *Water isotope*: The chemical history of the origin of water can be traced by measuring the ratio of isotope abundance at the present phase. So the analysis of  $\delta^{18}\text{O}$  and  $\delta\text{D}$  can be used to identify meteoric water isotopes [27] in certain regions so that they can be used to study the evolution of surface, subsurface water, and fluid source [28], [29]. The analysis is usually displayed on plots of two isotopes, such as Table 2 and Fig. 19. Meteoric water plotted lies along a straight line in the equation  $\delta\text{D} = 8 \delta^{18}\text{O} + 10$  [19], [30]–[33].

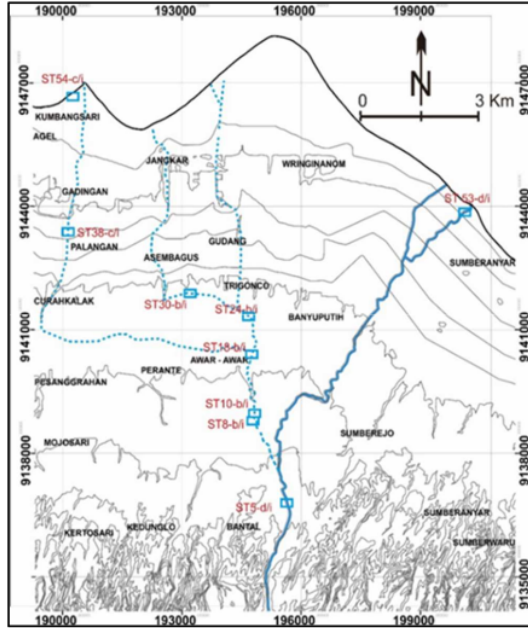


Fig. 19 Distribution sample of  $^{18}\text{O}$  and D isotopes from the research area.

Lake water isotopes show strong shifts of  $^{18}\text{O}$  and D isotopes due largely to the kinetic isotope effects associated with evaporation at high lake water temperatures [3]. They are coupled with the possible contribution of heavy magmatic isotopes that are condensed at depth. Water-rock interactions in the subsurface hydrothermal system can also affect the final value of the  $^{18}\text{O}$  isotope from lake water.

In the study area,  $^{18}\text{O}$  and D isotopes are compared with an analysis of  $^{18}\text{O}$  and D isotopes in the Ijen crater lake [3]. Plotting results of  $\delta^{18}\text{O}$  and D in the study area, which included samples of river water and wells are compared to the water craters of Ijen showed that river water and well water in the study area included meteoric water (Fig. 20) [3], while the Ijen Crater which was upstream of the Banyupait River was water mixed with magmatic fluids.

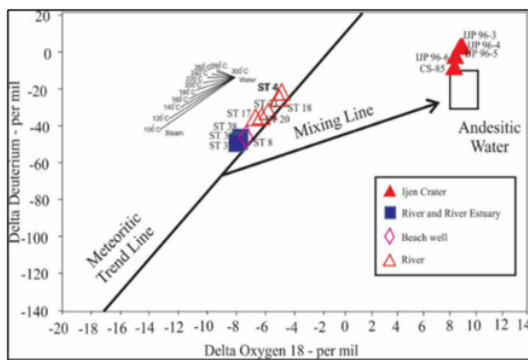


Fig. 20 Distribution of  $^{18}\text{O}$  and D isotopes from the research area and Ijen Crater Lake water. Data on D and  $^{18}\text{O}$  isotopes of Ijen Crater Lake water used data [3].

TABLE I  
ANALYSIS OF CATION, ANION AT THE BANYUPAIT RIVER WATER, AND RIVER ESTUARY AND COASTAL WELL.

No. Samples	Cation (ppm)				Anion (ppm)
	Na	K	Ca	Mg	Cl
Banyupait River water					
ST5-a/ak	14.713	7.522	10.474	8.726	3.66
ST8-a/ak	47.631	17.037	62.246	46.934	2.35
ST10-a/ak	50.941	21.123	52.123	43.555	15.10
ST53-a/ak	51.007	23.576	57.501	43.835	434.61
River and river estuary water					
ST18-a/ak	10.743	6.331	9.181	6.313	146.20
ST23-a/ak	6.385	7.339	5.727	3.559	104.54
ST38-a/ak	260.558	28.451	79.093	71.726	168.95
Coastal well					
ST54-a/ak	47.869	19.448	48.924	40.962	157.31

TABLE II  
ANALYSIS OF  $\delta^{18}\text{O}$  AND  $\Delta\text{D}$  OF IJEN CRATER LAKE WATER [3], BANYUPAIT RIVER WATER, AND RIVER ESTUARY AND COASTAL WELL.

No. Samples	$\delta^{18}\text{O}$ (‰)	D(‰)
Ijen Crater Lake water [3]		
IJP96-3	8.7	0.6
IJP96-4	8.7	-0.7
IJP93-5	8.8	0.9
IJI96-6	8.3	-3.1
CS-85	8.3	-9.4
Banyupait River water		
ST5-b/i	-5.07	-25.5
ST8-b/i	-6.85	-9.1
ST10-b/i	-5.14	-27.0
River and river estuary water		
ST18-c/i	-7.62	-46.0
ST24-b/i	-6.43	-37.2
ST30-b/i	-6.01	-36.4
ST38-c/i	-7.68	-46.6
ST54-d/i	-7.34	-44.3
Coastal well		
ST53-d/i	-7.59	-45.6

5) *Rare Earth Element (REE) water*: The rare earth element (REE) geochemistry in acid surface water has been studied [34]. Because different rock types usually have a unique REE profile, geochemists often use REE as fingerprints for source areas. REE analytical data in the waters of the active crater lake was minimal [4]. Similarly, in the study area (Fig. 21), an REE analysis was carried out to explain the distribution of changes in Ijen Crater water concentration to the estuarine river. It is Banyupait acidic river water, which comes from the crater, and as the study area. As with the distribution pattern of REE of Pinatubo Crater Lake water, REE concentrations are much lower due to hydrothermal processes and less acidic lake water. It was due to the LREE leaching process, which was faster than the heavy REE (HREE) [35], although the level of REE concentration in water crater lakes was much higher compared to other natural water [4].

In this study, the Banyupait River acid water's REE characteristics caused by the seepage of the very acidic Ijen Crater water and study the change in concentration from REE to the coastline. A total of 9 water samples from the study area analyzed by REE were obtained from three regions:

- The upstream sector of the Banyupait River, namely in the village of Bantal.

- Banyupait watersheds from the Awar-Awar area to the estuary.
- The coastal area is represented by shallow well water.
- Spring cold water.

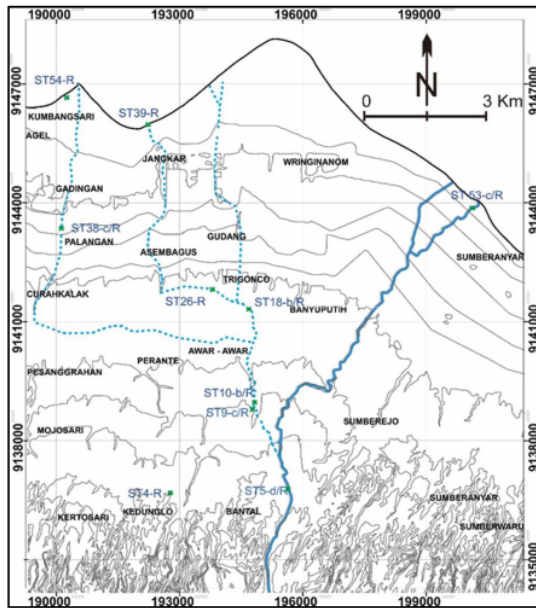


Fig. 21 Water sampling map for REE analysis.

The analysis results of these water samples are then plotted on a semi-logarithmic diagram (Fig. 22).

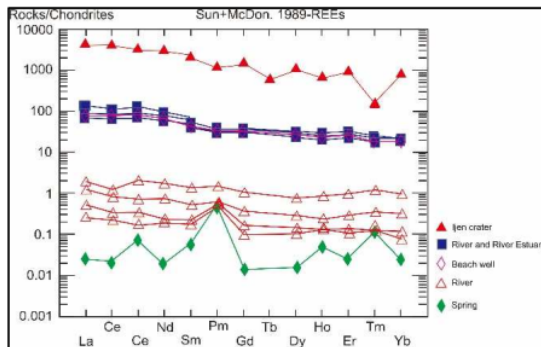


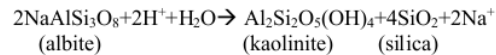
Fig. 22 Results of REE analysis of Ijen Crater REE [3], Banyupait River, well water, and spring at the research area.

As for Ijen Crater Lake water (5 samples) data, using data conducted by Delmelle *et al* [3]. From the plot results in the semi-logarithmic spider diagram of the effects of normalization of rare earth elements from the acid water of Ijen Crater Lake conducted Delmelle *et al*. [3] and several samples of the study area (Table 3.) on the increase in atomic numbers. It is generally seen that the crater water, rivers, and well water show a relative pattern of decreasing direction from light rare earth element (LREE) towards heavy rare earth element (HREE), except for the REE pattern of springs.

The plot results in the semi-logarithmic spider diagram of the results of normalization of rare earth elements from the acid water of Ijen Crater Lake (5 samples) was conducted by Delmelle *et al*. [3]. Some of the other samples were studied in the study area on the increase in atomic numbers. It is generally seen that the crater water, rivers, and well water show a relative pattern of decreasing direction from light rare earth element (LREE) towards heavy rare earth element (HREE), except for the REE pattern of a spring. The concentration value of Ijen Crater LREE shows a value of 2000-4000 times chondrite with a pH of 0-0.4 in La, Ce, Pr, Nd and gradually decreases towards heavy rare earth element (HREE) elements up to 800-1000 times chondrite in Dy, Ho, Er, and Yb. At the same time, the Tm element has a pattern decreasing up to 100 times chondrite.

### C. Rock-fluids Interaction

By definition, fluid-rock interaction results from a chemical reaction due to the fluid interacting with the rock in its path [3]. Fluid-rock interactions in the Banyupait River occur between Banyupait river water, which has an acidic pH with the rocks in its path. Fluid through the rock will dissolve aluminosilicate minerals (e.g., feldspar). Dissolution of this mineral is a complex process involving various other chemical reactions; mineral precipitation also occurs, relevant to the dissolution of feldspar [35]. Chemical reactions take place as follows:



The rocks passed by acidic fluid will undergo alteration to argillization, which produces clay minerals such as kaolinite, illite, and montmorillonite, iron oxide minerals can also be formed, such as hematite and iron sulfide or pyrite. In the Ijen area, this process is caused by the strong degassing of SO<sub>2</sub> and HCl from hyperacid water (pH ~0) and intensely altering the rock and producing secondary silica due to argillic alteration [35]. The sulfates from volcanic environments can provide information about many volcanic processes [36], and the altered rocks are the result of fluid-rock interactions in acidic fluids [21].

Banyupait River water with a pH of around 2.7-7.2 will react with bedrock composed of andesitic or basaltic so that rocks can undergo alteration both physically and chemically. The rocks change color from gray to brownish red. That is due to the interaction of acidic water in the Banyupait River with rocks. Minerals such as plagioclase, pyroxene, and volcanic glass made up of river bedrocks are replaced by chalcedony, clay minerals, and iron oxide/hematite. The change in the color of the bedrock of the Banyupait River can be seen in Fig. 23, while the change in the primary mineral constituent rocks into secondary minerals (clay minerals, chalcedony, and hematite) can be seen from petrographic analysis, as in Fig. 24.

TABEL III  
RESULTS OF THE REE ANALYSIS OF THE STUDY AREA AND THE REE RESULTS [3].

Sample Element	[3] Crater water										River		Beach well		River		Estuarine		Spring	
	0 m	25	50	75	82	30-Apr		30-Apr		29-Apr		May 1		May 1		May 2		May 3		
	12.1	12	12.2	12.3	12.1	28-Apr	30-Apr	30-Apr	30-Apr	29-Apr	May 1	May 1	May 1	May 1	May 2	May 2	May 2	May 3	May 3	
V	12.1	12	12.2	12.3	12.1	2.8662	27.8978	0.4423	12.7426	99.3019	1.5842	6.4243	1.6892	3.3281	65.2248					
Cr	247	331	295	302	304	1.3441	1.0119	1.2220	1.5920	2.3710	1.7228	2.0926	2.4429	1.3762	0.8975					
Mn	49.4	50.6	51.5	52.6	53.2	121.0185	8.4864	260.7941	1036.1196	488.8558	496.5489	489.5964	496.5582	307.3416	0.1725					
Fe	2330	2400	2400	2440	2450	172.3954	80.5545	32.2760	41.8277	17343.3207	3064.8910	6280.2041	3111.8384	118.0632	7.2165					
Co	476	454	471	456	451	0.5670	0.0821	2.3130	2.5382	5.6727	5.8002	5.5890	5.2648	2.7067	0.0168					
Ni	242	499	428	501	534	1.0719	0.5960	1.1512	1.8660	3.8679	3.6564	3.9481	4.0006	2.8807	0.7955					
Cu	336	347	366	399	354	1.3481	0.8685	0.6082	0.5895	6.9884	6.0355	6.3073	5.1909	1.8616	0.2537					
Zn	72	76.2	73.8	72.6	76.8	1.3581	15.6011	7.6147	4.3138	65.2250	52.4817	55.5554	39.5808	10.4800	227.2149					
Ga	1109	1076	1107	1083	1088	0.1225	0.0377	0.0311	0.0607	7.7535	2.3061	3.6976	2.5414	0.5541	<0.000					
As	1660	1550	1640	1610	1610	2.0575	1.5416	1.2424	1.4073	7.5525	1.6393	1.6973	1.0928	0.1435	2.2132					
Rb	4000	3900	4060	3970	4000	8.8053	9.5434	13.6106	25.4297	29.2001	27.7937	28.7739	33.6364	49.7487	9.3527					
Sr	17.3	16.1	16.9	16.4	17.1	96.1302	166.9835	145.0570	972.3067	942.4733	860.7520	928.8451	1409.7965	7843.3004	447.0924					
Y	1230	1170	1150	1160	1150	1.2157	0.1418	0.4648	0.2424	34.6369	30.3834	29.8390	39.4799	53.7790	0.0176					
Cd	57.1	55.7	57.6	57.1	55.9	0.0291	0.0048	0.0522	0.0819	0.5388	0.4208	0.4551	0.3849	0.1335	0.1993					
Ba	275	240	251	217	270	48.7390	33.9170	21.1929	54.1833	70.4044	66.3713	62.6900	93.6329	100.9594	30.2435					
La	1030	990	984	990	1010	0.4095	0.0579	0.2739	0.1114	19.9420	16.6028	16.9008	21.6084	32.3326	0.0058					
Ce	2530	2430	2410	2430	2490	0.7219	0.1250	0.4728	0.1906	50.1055	40.8971	40.7143	52.0973	68.7157	0.0115					
Pr	313	300	300	300	307	0.1712	0.0156	0.0623	0.0298	8.0308	6.6944	6.5933	8.7720	12.2335	0.0070					
Nd	1440	1370	1380	1380	1410	0.7458	0.0949	0.3165	0.0835	33.3484	27.3721	28.3773	35.1799	44.1153	0.0092					
Sm	311	297	298	301	305	0.1902	0.0319	0.0717	0.0254	7.2541	6.0464	6.5816	7.3964	7.8779	0.0086					
Eu	68.7	66.2	65.8	66.1	67.2	0.0786	0.0294	0.0325	0.0306	2.0225	1.7680	1.8693	2.2303	2.1328	0.0246					
Gd	296	287	288	291	293	0.1978	0.0191	0.0674	0.0308	6.9848	6.2384	6.6445	7.4714	7.5986	0.0030					
Dy	269	263	263	264	265	0.1809	0.0245	0.0661	0.0337	6.4884	5.6721	5.9711	7.4485	8.1328	0.0039					
Ho	38.3	36.9	37.2	37.1	37.3	0.0465	0.0074	0.0132	0.0074	1.3150	1.1015	1.1257	1.4132	1.6964	0.0032					
Er	150	146	147	146	149	0.1498	0.0128	0.0445	0.0164	4.0898	3.6283	3.7688	4.4767	5.1961	0.0041					
Tm	4.1	3.7	4.3	4	3.6	0.0287	0.0036	0.0076	0.0027	0.4976	0.4474	0.4615	0.5546	0.6318	0.0033					
Yb	132	129	128	128	131	0.1510	0.0118	0.0497	0.0184	3.3388	3.0091	3.2538	3.7957	3.6276	0.0041					
Tl	786	773	799	786	789	0.1288	0.6438	0.6929	0.8748	1.1661	1.1702	2.2068	3.8739	7.5036	0.1076					
Pb	4290	4200	4370	4280	4350	0.0013	2.2834	0.4091	0.3259	22.7502	8.1107	11.8436	10.7349	5.3317	1.2886					
U	51	50	53	52	54	0.0272	0.0765	0.0097	0.2113	1.5495	1.0962	1.1989	1.4716	6.7842	0.8283					



Fig. 23 The photo explains that the river bed rocks are brownish due to the rock processes that interact with the Banyupait River acid water.

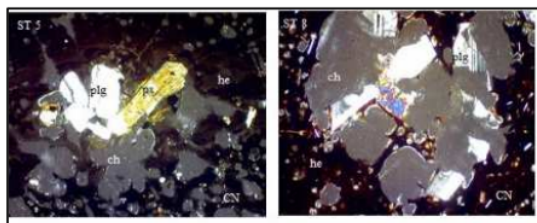


Fig. 24 Shows plagioclase minerals (plg), pyroxene (px), and groundmass of volcanic glass altered due to interacting with the acidic water of the Banyupait River (location at Sukorejo dan Bantal). ch: chalcodony, he: hematite.

### B. Dilution Process

Acidic water lake that occurs in the Ijen crater can impact volcanogenic pollutants that will endanger the health of the community around Mount Ijen. In addition to the very acidic waters of Ijen Crater Lake, this will, of course, be followed by high concentrations of heavy metal and other toxic elements, as is the opinion of [37]. As is the case in the Ciwide River, the composition is rich in sulfur and chlorine at a pH between 2.0 and 3.5, and it will be followed by high concentrations of heavy metal and other toxic elements [38].

The extreme chloride sulfate acid of lake water produced by Ijen Crater water is caused by the interaction of rising magmatic gas mixed with meteoric water. Due to the high temperature of volcanic gas, it will transport metal and non-metal elements. Thereby increasing the concentration of heavy metal and other trace elements in acid lakes [37].

In the area of Mount Ijen, crater lake seepage water will affect the concentration of surface and groundwater in the Ijen Volcano area. It is shown by the influence of the pH of Banyupait River water on the pH of shallow well water (around 6.2-6.7) around the Banyupait River flow. Besides, during flow to the sea, the pH of Banyupait River water (2.7-7.4) experienced dilution due to the addition of artesian well water so that the pH of the Banyupait River water downstream is more neutral than in the upstream. The water can be used to irrigate agricultural land in chilies, tomatoes, rice, and eggplants. Besides that, the results of  $\text{SO}_4$  analysis of water around the Banyupait River show different variations.

The eastern Banyupait River shows a high concentration, around 504-683 ppm, while in the west offers a range between 220-683 ppm. In general,  $\text{SO}_4$  levels in the western part of the Banyupait River were relatively low (220-449 ppm). Correspondingly, the elements Ca, K, and Mg concentrations in the river flow to the coastal estuary show higher concentrations than those in the Banyupait River flow, as

shown in Fig. 25. It is due to the addition of elements from agricultural activities.

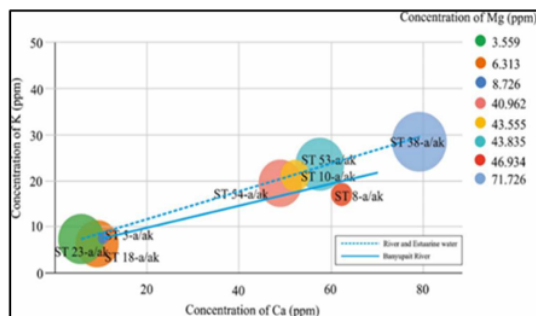


Fig. 25 The Ca-K-Mg elements' balloon diagram shows that the Ca, K, and Mg show a linear pattern.

The pH condition of the Banyupait River water and  $\text{SO}_4$  concentration greatly influences the REE element concentration of the Banyupait River acid water. However, the graphic pattern of REE elements in Banyupait River water shows a horizontal pattern, except the zig-zag pattern, which is shown by the REE element from the air spring that comes not from the acid water of the Ijen Crater Lake. The horizontal pattern, such as the REE profile dissolved from acidic water in the Copahue Crater Lake and the Rio Agrio source originating from the andesitic composition of the Copahue Volcano [38].

The upstream water of the Banyupait River flows towards the downstream has undergone dilution because it mixes with springs other than the Banyupait River. It has been demonstrated by the distribution of chemical elements REE in Fig. 22. This figure also shows that the spring water comes from a different source, not influenced by Ijen Crater water. Whereas in the water river Banyupait from Awar-Awar until the estuarine river, river water has been mixed with artesian well water.

REE shows the value of 60-200 times chondrite with pH of about 6.8-7.3 in the element La, Ce, Pr, Nd and gradually decreases towards the heavy rare earth element (HREE) up to 20 times chondrite on Dy, Ho, Er, Tm and Yb elements. The Sebulan spring shows a different pattern from the previous type of water, which shows the composition of water with a pH of about 7 has a value of 0.02-0.08 times chondrite in both LREE and HREE elements. However, the concentration increases up to 0.5 times the chondrite in the Eu element. It shows that the spring water comes from a different source; it is not influenced by Ijen Crater water.

In the Banyupait River flow in Bantal Village, the value of the REE concentration of Banyupait River water shows a value of 0.1-2 times chondrite with a pH of about 3-7 in La, Ce, Pr, Nd. The pattern gradually decreases weakly or relatively flat towards heavy rare earth elements element (HREE) up to 0.08-1 times chondrite on Dy, Ho, Er, Tm, and Yb elements. The concentration of  $\sum\text{REE}$  in Ijen Crater lake water was classified as high, which was in the range of 5.8 6 to 6.5 2 mg kg REE pattern was normalized to volcanic rock showing a flat pattern [40]. It indicates the occurrence of an isochemical process.

Whereas in the river's mouth, the river water has been mixed with artesian well water, showing a value of 60-200 times chondrite with a pH of about 6.8-7.3. The element La, Ce, Pr, Nd gradually decreases towards the heavy rare earth element (HREE) up to 20 times chondrite on Dy, Ho, Er, Tm, and Yb elements. The Sebulan spring shows a different pattern from the previous type of water, which offers the value of 0.02-0.08 times chondrite at a pH of around 7 in both LREE and HREE elements. However, the concentration increases up to 0.5 times the chondrite in the Eu element. It also happens as, downstream of Rio Norquin, the dissolved REE concentration due to dilution decreases far more than the REE of upstream river water. So that going downstream has an REE pattern with a negative slope across the lanthanide series while a positive slope across the lanthanide series. This pattern shift is most likely due to the separation of heavier REE into suspended particles or secondary minerals in the streambed [40]. However, the positive anomaly Pm in the Banyupait River water sample is likely due to increased suspended particles during the flow.

#### IV. CONCLUSION

Ijen Volcano was an active stratovolcano that has a large caldera with very acidic crater lakes. pH 0-1 as magmatic water types ( $\delta^{18}\text{O} = 8.3-8.7\%$ ,  $D = -9.4-0.6\%$ ). The acidic water from the crater lake seeps into the Banyupait River and flows at the Asembagus region, so the Banyupait River is still in a very acidic concentration. The concentration pH of around 3-7.3 and  $\text{SO}_4$  levels around 220-683 ppm. But the water river was meteoric ( $\delta^{18}\text{O} = -5.14 - -7.68\%$ ,  $D = -46.6 - -25.5\%$ ).

Banyupait acidic water is on its way to the estuary experience. It was mixed with agricultural activities so that the acid water in the eastern part of Banyupait contains Ca, K, and Mg elements compared to the western part of Banyupait river water used for agricultural activities. To reduce the concentration of acidity, farmers add acidic water to artesian well water. Acidic water passes through rocks compiled by Ijen volcanic material Pre-caldera consisting of Old Ijen pyroclastic breccia deposits and lahar breccias of Bogor Formation. As a result of acidic water interaction, the primary minerals of plagioclase, pyroxene, and groundmass are replaced by chalcedony and hematite.

The plot results of the REE element concentration in the spider diagram generally show a horizontal pattern. The pattern is the Banyupait River acid water pattern in the river flow and the dilution area with a pH of around 3-7.3. The LREE concentration was higher than the HREE value, and only the Pm element showed a slightly positive anomaly. In contrast, the zig-zag pattern is a pattern from a spring different from the acid water source of the Ijen Crater Lake.

#### ACKNOWLEDGMENT

This research was carried out involving several parties, including the Ministry of Education Indonesia, which funded this research. Geological Agency (BPPTKG), which has contributed to the provision of secondary data. Hydrogeology and Hydrogeochemistry Laboratory of ITB Bandung, *Laboratorium Penelitian dan Pengujian Terpadu* of Gajah Mada University Yogyakarta, and *Balai Besar Teknik*

*Kesehatan Lingkungan dan Pengendalian Penyakit* Yogyakarta which has carried out chemical analysis of water from research samples. Then the Petrology Laboratory of the Department of Geological Engineering at UPN Veteran Yogyakarta has helped facilitate rock analysis and field activity equipment. For that, thank you to some of these parties for helping to launch this research activity.

#### REFERENCES

- [1] Delmelle, P. and Bernard, A. (1994) 'Geochemistry, mineralogy, and chemical modeling of the acid crater lake of Kawah Ijen Volcano, Indonesia', *Geochimica et Cosmochimica Acta*, 58(11), pp. 2445–2460. DOI: 10.1016/0016-7037(94)90023-X.
- [2] Sriwana, T. and Kadarsetia, E. (2010) 'Kimia Air Danau Kawah Gunung Ijen Dan Sekitarnya – Jawa Timur, Menjelang Letusan Tahun 1999 Chemistry of the Crater Lake of Ijen Volcano and Surrounding Area, East Java, Prior To 1999 Eruption', 5(June 1999), pp. 19–23.
- [3] Delmelle, P., Bernard, A., Kusakabe, M., Fischer, T. P., Takano, B. (2000) 'Geochemistry of the magmatic-hydrothermal system of Kawah Ijen volcano, East Java, Indonesia', *Journal of Volcanology and Geothermal Research*, 97(1–4), pp. 31–53. DOI: 10.1016/S0377-0273(99)00158-4.
- [4] Takano, B., Suzuki, K., Sugimori, K., Ohba, T., Fazlullin, S. M., Bernard, A., Sumarti, S., Sukhyar, R., Hirabayashi, M. (2004) 'Bathymetric and geochemical investigation of Kawah Ijen Crater Lake, East Java, Indonesia', *Journal of Volcanology and Geothermal Research*, 135(4), pp. 299–329. DOI: 10.1016/j.jvolgeores.2004.03.008.
- [5] Gunawan, H., Caudron, C., Pallister, J., Primulyana, S., Christenson, B., Mccausland, W., van Hinsberg, V., Lewicki, J., Rouwet, D., Kelly, P., Kern, C., Werner, C., Johnson, J. B., Utami, S.B., Syahbana, D.K., Saing, U., Suparjan, Purwanto, B. H., Sealing, C., Cruz, M.M., Maryanto, S., Bani, P., Laurin, A., Schmid, A., Bradley, K., Nandaka, I. G.M.A., Hendrasto, M. (2016) 'New insights into Kawah Ijen's volcanic system from the wet volcano workshop experiment', *Geological Society, London, Special Publications*, 437(1), pp. 35–56. DOI: 10.1144/sp437.7.
- [6] Berlo, K., van Hinsberg, V., Purwanto, S., Heri, B., Hendra, G. (2020) 'Using the composition of fluid seepage from the magmatic-hydrothermal system of Kawah Ijen volcano, Indonesia, as a monitoring tool', *Journal of Volcanology and Geothermal Research. Elsevier B.V.*, 399(March 2018), p. 106899. DOI: 10.1016/j.jvolgeores.2020.106899.
- [7] Caudron, C., Syahbana, D.K., Lecocq, T., Hinsberg, V., Wendy, M., Antoine, T., Camelbeek, T., Bernard, A., Surono (2015) 'Kawah Ijen volcanic activity: a review', *Bulletin of Volcanology*, 77(3). DOI: 10.1007/s00445-014-0885-8.
- [8] Scher, S., Williams-Jones, A. E. and Williams-Jones, G. (2013) 'Fumarolic activity, acid-sulfate alteration, and high sulfidation epithermal precious metal mineralization in the crater of Kawah Ijen volcano, Java, Indonesia', *Economic Geology*, 108(5), pp. 1099–1118. DOI: 10.2113/econgeo.108.5.1099.
- [9] Hochstein, M. P., and Sudarman, S. (2015) 'Indonesian Volcanic Geothermal Systems', *World Geothermal Congress*, (April), pp. 1–11.
- [10] Kilburn, C. R. J., De Natale, G. and Carlino, S. (2017) 'Progressive approach to eruption at Campi Flegrei caldera in southern Italy', *Nature Communications. Nature Publishing Group*, 8(May), pp. 1–8. DOI: 10.1038/ncomms15312.
- [11] Stix, J. and de Moor, J. M. (2018) 'Understanding and forecasting phreatic eruptions driven by magmatic degassing', *Earth, Planets, and Space. Springer Berlin Heidelberg*, 70(1). DOI: 10.1186/s40623-018-0855-z.
- [12] Hinsberg, V. Van, Berlo, K. and Williams-jones, A. E. (2010) 'Extreme alteration by hyper acidic brines at Kawah Ijen volcano, East Java, Indonesia: I Textural and mineralogical imprint', (December). DOI: 10.1016/j.jvolgeores.2010.09.002.
- [13] Handley, H. K. Macpherson, C. G., Davidson, J. P., Berlo, K., Lowry, D. (2007) 'Constraining fluid and sediment contributions to subduction-related magmatism in Indonesia: Ijen Volcanic Complex', *Journal of Petrology*, 48(6), pp. 1155–1183. DOI: 10.1093/petrology/egm013.
- [14] Van Hinsberg, V., Vigouroux, N., Palmer, S., Berlo, K., Mauri, G., Williams-Jones, A., Mckenzie, J., Williams-Jones, G., Fischer, T. (2017) 'Element flux to the environment of the passively degassing

- crater lake-hosting Kawah Ijen volcano, Indonesia, and implications for estimates of the global volcanic flux', Geological Society Special Publication, 437(1), pp. 9–34. DOI: 10.1144/SP437.2.
- [15] Sitorus, K., Nanlohi, F. and Simanjuntak, J. (2003) '26. pemboran dua sumur produksi untuk pengembangan listrik tenaga panas bumi mataloko, kabupaten ngada, flores – nusa tenggara timur', (444).
- [16] Pratama, A. and Bijaksana, Satria, M. A. and N. A. S. (2018) 'Rock Magnetic, Petrography, and Geochemistry Studies of Lava at the Ijen Volcanic Complex (IVC), Banyuwangi, East Java, Indonesia', (Ivc), pp. 1–14. DOI: 10.3390/geosciences8050183.
- [17] Maryanto, S. Dewi, C.N., Syahra, V., Rachmansyah, A., Foster, J.H., Nadhir, A., Santoso, D. R. (2017) 'Magnetotelluric-geochemistry investigations of Blawan geothermal field, East Java, Indonesia', Geosciences (Switzerland), 7(2), pp. 1–13. DOI: 10.3390/geosciences7020041.
- [18] Geologi, B. (2014) 'G. Ijen, Jawa Timur'. Available at: <http://www.vsi.esdm.go.id/index.php/gunungapi/data-dasar-gunungapi/522-g-ijen>.
- [19] Craig, H. (1961) 'Isotopic variations in meteoric waters', Science, 133(3465), pp. 1702–1703. DOI: 10.1126/science.133.3465.1702.
- [20] Vigouroux-Caillibot, N., Williams-Jones, G., Supervisor, S., Coogan, L. V. (2003) 'Tracking the evolution of magmatic volatiles from the mantle to the atmosphere using integrative geochemical and geophysical methods' Title of Thesis: Tracking The Evolution Of Magmatic Volatiles From The Mantle To The Atmosphere Using Integrative Geochemi'. Available at: <https://pages.mtu.edu/~raman/papers2/RoweetalJVGR95Poas.pdf>.
- [21] Caudron, C., Taisne, B., Jurgen, N., Arthur, D., J., Bruce, C., Thomas, L., Suparjan, Syahbana, D., Gede, S. (2018) 'Anatomy of phreatic eruptions', Earth, Planets, and Space. Springer Berlin Heidelberg, 70(1). DOI: 10.1186/s40623-018-0938-x.
- [22] Sriwana, T., Van Bergen, M. J., Sumarti, S., De Hoog, J. C.M., Van Os, B. J.H., Wahyuningsih, R., Dam, M. A.C. (1998) 'Volcanogenic pollution by acid water discharges along Ciwidey River, West Java (Indonesia)', Journal of Geochemical Exploration, 62(1–3), pp. 161–182. DOI: 10.1016/S0375-6742(97)00059-9.
- [23] Caudron, C., Bernard, A., Murphy, S., Inguaggiato, S., Gunawan, H. (2018) 'Volcano-hydrothermal system and activity of Sirung volcano (Pantar Island, Indonesia)', Journal of Volcanology and Geothermal Research. Elsevier B.V., 357, pp. 186–199. DOI: 10.1016/j.jvolgeores.2018.04.011.
- [24] Palmer, S. C. J., van Hinsberg, V.J., McKenzie, J.M., Yee, S. (2011) 'Characterization of acid river dilution and associated trace element behavior through hydrogeochemical modeling: A case study of the Banyu Pahit river in East Java, Indonesia', Applied Geochemistry, 26(11), pp. 1802–1810. DOI: 10.1016/j.apgeochem.2011.06.004.
- [25] Wittiri, S.R. and Sumarti, S. (2010) 'Kawah Ijen Penghasil Belerang Terbesar'. Available at: <https://www.esdm.go.id/id/media-center/arsip-berita/kawah-ijen-penghasil-belerang-terbesar>.
- [26] Aminuddin and Andiani (2015) 'Ancaman Air Asam Kawah Ijen-Geomagz'. Available at: <http://geomagz.geologi.esdm.go.id/ancaman-air-asam-kawah-ijen/>.
- [27] Chiodi, A., Tassi, F., Báez, W., Filipovich, R., Bustos, E., Glok Galli, M., Suzaño, N., Ahumada, Ma F., Viramonte, J. G., Giordano, G., Pecoraino, G., Vaselli, O. (2019) 'Preliminary conceptual model of the Cerro Blanco caldera-hosted geothermal system (Southern Puna, Argentina): Inferences from geochemical investigations', Journal of South American Earth Sciences. Elsevier, 94(May), p. 102213. DOI: 10.1016/j.jsames.2019.102213.
- [28] Saby, M. Pinti, D.L., van Hinsberg, V., Gautason, B., Sigurðardóttir, Á., Castro, C., Hall, C., Óskarsson, F., Rocher, O., Hélie, J.F., Méjean, P. (2020) 'Sources and transport of fluid and heat at the newly-developed Theistareykir Geothermal Field, Iceland', Journal of Volcanology and Geothermal Research. Elsevier B.V., 405, p. 107062. DOI: 10.1016/j.jvolgeores.2020.107062.
- [29] Zhang, Y., Li, Song, Tang, D., Zhao, X., Zhu, S., Ye, J. (2020) 'Structure- and hydrology-controlled isotopic coupling and heterogeneity of coalbed gases and co-produced water in the Yanchuannan block, southeastern Ordos Basin', International Journal of Coal Geology. Elsevier B.V., 232(29), p. 103626. DOI: 10.1016/j.coal.2020.103626.
- [30] Craig, H. (1966) 'Isotopic composition and origin of the Red Sea and Salton Sea geothermal brine', Science, 154(3756), pp. 1544–1547. DOI: 10.1126/science.154.3756.1544.
- [31] Permana, A. K., Kusworo, A. and Prastian, A. H. (2014) 'Indonesian journal on geoscience', Indonesian Journal on Geoscience, 1(3), pp. 165–174. DOI: 10.17014/ijog.4.1.39-47.
- [32] Yu, X., Liu, C., Wang, C., Zhao, J.xin, Wang, J. (2021) 'Origin of geothermal waters from the Upper Cretaceous to Lower Eocene strata of the Jiangling Basin, South China: Constraints by multi-isotopic tracers and water-rock interactions', Applied Geochemistry. Elsevier Ltd, 124(May 2020), p. 104810. DOI: 10.1016/j.apgeochem.2020.104810.
- [33] Blasco, M., Auque, L.F., Gimeno, M.J., Acero, P., Asta, M. (2017) 'Geochemistry, geothermometry and influence of the concentration of mobile elements in the chemical characteristics of carbonate-evaporitic thermal systems. The case of the Tiermas geothermal system (Spain)', Chemical Geology. Elsevier, 466(May), pp. 696–709. DOI: 10.1016/j.chemgeo.2017.07.013.
- [34] Johannesson, K. H., and Lyons, W. B. (1995) 'Rare-earth element geochemistry of Colour Lake, an acidic freshwater lake on Axel Heiberg Island, Northwest Territories, Canada', Chemical Geology, 119(1–4), pp. 209–223. DOI: 10.1016/0009-2541(94)00099-T.
- [35] Lowenstern, J. B., Van Hinsberg, V., Berlo, K., Liesegang, M., Iacovino, K., Bindeman, I., Wright, H.M. (2018) 'Opal-a in glassy pumice, acid alteration, and the 1817 phreatomagmatic eruption at Kawah Ijen (Java), Indonesia', Frontiers in Earth Science, 6(February), pp. 1–21. DOI: 10.3389/feart.2018.00011.
- [36] Utami, S.B., Hinsberg, Vincent J. Van, Ghaleb, B., Dijk, Arnold E. Van (2020) 'Oxygen isotope fractionation between gypsum and its formation waters: Implications for past chemistry of the Kawah Ijen volcanic lake, Indonesia', American Mineralogist, 105(5), pp. 756–763. DOI: 10.2138/am-2020-7298.
- [37] Rica, C., Rowe, G.L., Brantley, S.L., Fernandezb, J.F., Borgia, A. (1995) 'The chemical and hydrologic structure of PO & Volcano', Evaluation, 64, pp. 233–267. Available at: <https://pages.mtu.edu/~raman/papers2/RoweetalJVGR95Poas.pdf>.
- [38] Sriwana, T., Bergen, Van, Darma, S. (2001) 'Penyebaran unsur kimia dari daerah kenampakan panasbumi dan lumpur belerang di Gunung Patuha, Ciwidey, Jawa Barat'.
- [39] Gammons, C. H., Wood, S. A., Pedrozo, F., Varekamp, J.C., Nelson, B.J., Shope, C. L., Baffico, G. (2005) 'Hydrogeochemistry and rare earth element behavior in a volcanically acidified watershed in Patagonia, Argentina', Chemical Geology, 222(3–4), pp. 249–267. DOI: 10.1016/j.chemgeo.2005.06.002.
- [40] Inguaggiato, C. Pappaterra, S., Peiffer, L., Apollaro, C., Brusca, L., De Rosa, R., Rouwet, D., Caudron, C., Suparjan (2020) 'Mobility of REE from a hyperacid brine to secondary minerals precipitated in a volcanic hydrothermal system: Kawah Ijen crater lake (Java, Indonesia)', Science of the Total Environment. Elsevier B.V., 740, p. 140133. DOI: 10.1016/j.scitotenv.2020.140133.

# Geochemistry Acidic Water of Banyupait River Effect Seepage of Crater Water Ijen Volcano, Asembagus, Indonesia

---

## ORIGINALITY REPORT

---

0%

SIMILARITY INDEX

0%

INTERNET SOURCES

0%

PUBLICATIONS

0%

STUDENT PAPERS

---

## PRIMARY SOURCES

---

Exclude quotes Off  
Exclude bibliography Off

Exclude matches < 30%