

ATMI 2018_Brittleness Index and TOC

by Barlian Dkk

Submission date: 24-Mar-2022 07:12PM (UTC+0700)

Submission ID: 1791741326

File name: 2_IATMI_2018_Brittleness_Index_and_TOC.pdf (7.11M)

Word count: 5189

Character count: 58187

ISBN: 978-90665-0-5



PROSIDING SIMPOSIUM IATMI 2018



**Strategi Revolusioner Pengembangan Lapangan,
Teknologi dan Kebijakan Migas Guna Meningkatkan
Ketahanan Energi Dalam Rangka Ketahanan Nasional**

PADANG, 1-3 OKTOBER 2018



PADANG, 1-3 OKTOBER 2018



ISBN: 978-90665-0-5

PROSIDING SIMPOSIUM IATMI 2018



**Strategi Revolusioner Pengembangan Lapangan,
Teknologi dan Kebijakan Migas Guna Meningkatkan
Ketahanan Energi Dalam Rangka Ketahanan Nasional**

PADANG, 1-3 OKTOBER 2018



PADANG, 1-3 OKTOBER 2018



PROSIDING SIMPOSIUM IATMI 2018

Tema :

**“Strategi Revolusioner Pengembangan Lapangan, Teknologi dan
Kebijakan Migas Guna Meningkatkan Ketahanan Energi Dalam
Rangka Ketahanan Nasional”**

1
SEKRETARIAT IATMI

Komplek Perkantoran PPPTMGB “LEMIGAS” Gedung Penunjang Lt.2
Jl. Ciledug Raya Kav.109 Cipulir, Kebayoran Lama, Jakarta Selatan

**SUSUNAN PANITIA
SIMPOSIUM IATMI 2018**

Ketua Umum IATMI : Tutuka Ariadji

Wakil Ketua Umum IATMI : Hadi Ismoyo

Sekjen IATMI : Usman Pasarai

Panitia Pelaksana / Steering Committe

Ketua Simposium IATMI : Waras Budi Santoso

Wakil Ketua Simposium IATMI : Edwil Suzandi

Pelaksana Harian : Gunawan Nurcahyo Wibowo

Sponsorship : Aris Mulya Azof
Lucky Bagus Waskito
Novie Hernawati

Protokol : Julianta Panjaitan
Hafif Assaf
Wisnu Jalu Akbar
Boy Arno Muhamad
Mitra Eviani

Tim Editor : Mahtubah
Supianudin
Nadimah Albar
Sarah

Tim Reviewer : Luky Hendraningrat
Andry Halim
Sylvia Rachmawati
Marda Vidriarto
Andre Cebastian
Yunus Alamsyah
Hari Budihardjo
Achamd Soendaroe

Diterbitkan oleh:

Sekretariat IATMI

Komplek Perkantoran PPPTMGB "LEMIGAS" Gedung Penunjang Lt.2

Jl. Ciledug Raya Kav.109 Cipulir, Kebayoran Lama, Jakarta Selatan 12230

Telp : 021 7394422
Ext : 1914
e-mail : pusat@iatmi.or.id
Website : www.iatmi.or.id

PENGANTAR

IATMI mendorong agar pengembangan gas bumi di lapangan East Natuna dapat segera terealisasi. Selain itu, potensi di kawasan Indonesia Tengan dan Timur ikut menjadi sorotan untuk dicarikan strategi pengembangan yang tepat. Kedua bahasan tersebut menjadi kegiatan utama melalui plenary session dalam Simposium IATMI 2018 yang digelar di Padang pada 1-3 Oktober 2018 mendatang.

“Kami ingin memberikan ide-ide dan rekomendasi kepada pemerintah, sekaligus mensinergikan strategi pengembangan gas di Indonesia,” kata Ketua IATMI, Tutuka Ariadji di Jakarta, Minggu (9/9).

Simposium kali ini bertajuk “Strategi Revolusioner Pengembangan Lapangan, Teknologi dan Kebijakan Migas Guna Meningkatkan Ketahanan Energi Dalam Rangka Ketahanan Nasional”. Tema ini diusung untuk mendukung, memberikan rekomendasi, dan mencari terobosan-terobosan strategi mengenai pengembangan lapangan, teknologi, dan kebijakan migas untuk mencapai ketahanan energi nasional.

Menurut Tutuka, tema ini relevan dengan kondisi Indonesia saat ini. Tantangan yang semakin besar yang mengharuskan pemangku kepentingan untuk berpikir dan bekerja yang lebih keras untuk mencapai ketahanan energi di masa datang. Dalam menyelesaikan permasalahan ini diperlukannya terobosan revolusioner dan juga sinergi seluruh pemangku kepentingan, antara lain pemerintah pusat dan daerah, pelaku industri, akademisi dan publik.

Narasumber yang hadir dalam simposium diantaranya, Kepala Satuan Kerja Khusus Pelaksana Kegiatan Usaha Hulu Minyak dan Gas Bumi (SKK Migas), Amien Sunaryadi, perwakilan Kementerian Pertahanan, Kementerian Keuangan, Kementerian Perindustrian, Kementerian Luar Negeri, direksi Pertamina, PLN, dan Pupuk Indonesia.

Ketua Simposium IATMI, Waras Budi Santosa menambahkan, berbagai kegiatan yang diadakan diantaranya plenary session, professional technical paper, student festival paper contest (FPC), IATMI Technology Workshop & Short Course, IATMI International & Inter-regional Consolidation.

“Simposium diharapkan memberikan kesempatan untuk berinteraksi dalam sesi teknikal bisnis dan interaksi sosial, serta menjadi ajang networking dan sinergi antara pemerintah pusat dan daerah, perusahaan migas dan pendukungnya, profesional migas, akademisi, dan mahasiswa,” kata Waras.

IATMI merupakan Asosiasi non profit, didirikan di Jakarta pada 7 Juni 1979 oleh sekelompok profesional Indonesia yang fokus pada bidang industri perminyakan dan gas. Pada saat ini IATMI memiliki lebih dari 10.000 anggota terbesar di Indonesia dan beberapa negara di dunia yang terbagi dalam berbagai komisariat.

SAMBUTAN KETUA UMUM IATMI

Sejarah migas Indonesia tergolong malang dan migas senantiasa sebagai prime mover energi nasional, walaupun begitu, sumber daya migas yang dahulu berkontribusi lebih dari 50% untuk anggaran negara belum dapat dimanfaatkan untuk mewujudkan kemandirian nasional. Masa keemasan migas nasional sudah berlalu, namun demikian dengan semangat yang tinggi tidak mengenal putus asa dan mengerahkan segenap pikiran, mungkinkah dengan potensi sumberdaya yang masih ada, kondisi saat ini dapat dibalik menjadi Indonesia Mandiri?

Menjadikan Indonesia dominan gas adalah keniscayaan langkah strategis jalan menuju Ketahanan Energi, dikarenakan penurunan produksi minyak hanya dapat dibalik kondisinya dengan mengeksplotasi ketersediaan minyak tersisa melalui Enhanced Oil Recovery dan melakukan eksplorasi. Sebagai suatu konsekuensi diperlukan kebijakan keberpihakan alokasi produksi gas untuk kebutuhan domestik guna menumbuhkan industri-industri pemanfaatan gas dengan berbagai bentuknya. Menatap masa depan dengan penuh harapan, potensi cadangan gas Natuna adalah merupakan second lite of Indonesia, dengan tantangan strategi pemanfaatannya. Tidak hanya kandungan CO₂ yang ekstrim tinggi, juga tekanan serta kemampuan laju air yang sangat tinggi.

Menatap masa depan yang lebih terang untuk Indonesia Bagian Timur, pemanfaatan cadangan gas untuk cita-cita Papua Terang menjadi perhatian sungguh-sungguh IATMI untuk turut berkontribusi mewujudkannya. Menyadari hal kondisi belum adanya rencana pemenuhan kebutuhan energi yang sudah malang untuk Kawasan Indonesia Timur, diketengahkan langkah awal menyusun strategi bagaimana mentransportasikan gas dengan tepat dan mencapai sasaran.

Harapan kami, Simposium Nasional IATMI 2018 tidak hanya dapat memberikan inspirasi tetapi juga dapat menggerakkan secara nasional secara bersama menjawab tantangan besar yang diuraikan di atas di sebelah baral. Indonesia mempunyai gas Natuna, dan di Kawasan Timur. Indonesia mempunyai Lapangan Tangguh, Masela dan Kasun. untuk kemakmuran dan kemandirian bangsa Indonesia

Sebagai penutup, kami ucapkan banyak terimakasih atas segenap dukungan dari pemangku kepentingan pada acara Simposium Nasional IATMI 2018.

Salam,

Tutuka Ariadji

SAMBUTAN KETUA SIMPOSIUM IATMI

Sebagai bagian dari upaya untuk memajukan dan profesionalisme dan memberikan kontribusi kepada sektor energy Indonesia, IATMI - Ikatan Ahli Teknik Perminyakan Indonesia dengan bangga akan menyelenggarakan "SIMPOSIUM IATMI 2018" di Padang 1-3 Oktober 2018.

Simposium dan Kongres kali ini mengambil tema "Strategi Revolusioner Pengembangan Lapangan, Teknologi dan Kebijakan Migas Guna Meningkatkan Ketahanan Energi Dalam Rangka Ketahanan Nasional", Tema ini diusung untuk mendukung dan memberikan rekomendasi juga terobosan strategi-strategi mengenai pengembangan lapangan, teknologi dan kebijakan migas untuk mencapai ketahanan energy dimana pada simposium kali ini lebih di fokuskan mengenai pengembangan gas di Indonesia.

Tema ini sangat relevan dengan kondisi Indonesia saat ini di mana "Tantangan energi" tanah air semakin besar. Hal ini mengharuskan kita untuk berpikir dan bekerja yang lebih keras untuk mencapai "Ketahanan Energi" di masa datang. Oleh karena itu, dalam menyelesaikan permasalahan ini diperlukannya "Terobosan Revolusioner" dan juga "Sinergi" seluruh pemangku kepentingan baik pemerintah pusat dan daerah, pelaku industry, akademiisi dan pemangku kepentingan lainnya.

Simposium ini diharapkan dapat menjadi ajang yang tepat untuk mendiskusikan tantangan di atas beserta usulan solusi dan juga memberikan kesempatan untuk kita semua untuk berinteraksi dalam sesi teknikal, bisnis dan interaksi sosial. Selain itu acara ini juga dtujukan untuk mempererat networking dengan semangat sinergi dan kolaborasi demi kemajuan energy nasional.

Kami berharap dukungan segenap pemangku kepentingan dalam acara ini sebagai sponsor, pembicara, penulis dan peserta dalam acara ini . Selain itu kami berharap akan adanya pemikiran yang sinergis dan revolusioner yang akan tersalurkan dari acara ini sebagai sumbangsih pengabdian untuk sector minyak dan gas nasional yang pada akhirnya untuk kemajuan Indonesia.

Salam,

Waras Budi Santosa

DAFTAR ISI

Judul Dalam	i
Katalog Dalam Terbitan (KDT)	ii
Pengantar	iii
Sambutan Ketua Umum	v
Sambutan Ketua Simposium IATMI	vii
Daftar Isi	ix
1. Development Scenario Selection in Marginal Offshore Gas Field with Case Study of Dry Gas Field in East Java, Indonesia, (Abdurachman Ali Assegaf, Nani Rahayu Marsanti)	1
2. Economic Comparison of Hydrocarbon Recovery under Surfactant Injection of Different Schemes, (Dike Putra, Firwan Aprizal, Billman Marpaung)	15
3. Overview Last 5 (Five) Years of Drilling Exploration Activities in Indonesia, (Wayan Mahendra Ernata, Yudha Risnandar Sinulingga, Ivan Fadlun Azmy)	29
4. Design to Value for Oil and Gas Development, (Candra Nugraha)	35
5. Techno Economic of DME Technology Utilization in Marginal Gas Development, (Danang Sismartono, Wanda Ali Akbar, Heru Prasetyo, Usman Pasarai, Fiqi Giffari, Ika Kaifiah)	47
6. Local Content Achievement: A Quest For Sustainability of Oil and Gas Supporting Industry, (Gamil Abdullah)	59
7. Analysis and Mapping of Oil and Gas Well Drilling Cost in Offshore Areas in Indonesia, (Ahmad Abdul Azizurrofi, Gideon Wibowo, Yosef Setya Buana, Zainul Manan, Edward Erwanto)	81
8. Increasing Economic Value for Offshore Marginal Field Development Through an Optimization Production Development Strategy, (Arif Rakhmawan, Yudi Budiansah, Alvin Wirawan)	91
9. Analysis Of Natural Gas Industry Competitiveness in Indonesia : a Porter's Five Forces Model, (Adityawarman, Rezki Sulung Putra Marbun)	101
10. Determinant Factors In Lng Import Pricing a Comparison Study Between The European & Far East Asia Market And Implication To Indonesia Lng Marketing Strategy, (Muhammad Anas Pradipta)	115
11. An Advanced QAQC Strategy in Drilling Management to Anticipate Contractor's Efficient Survival Mode, (Erwindo Tanjung)	131
12. Successful Selection Methodology for Down-Hole Flow Control, Orchard Field Waterflood Injectors, (Prapta Maulana, Imron Fajar Kurniawan, Paulus Suryono Adisoemarta, Eric Anders Flodin, Ilfih)	137
13. Development of an Ultra-High Temperature High Pressure Organophilic Clay-Free (OCF) Invert Emulsion Fluid to Reduce Surge and Swab Effects and Pressure Drops Compared to Existing Conventional Clay-Based Invert Emulsion Fluids,	

(Devi Putra1, Arga Purwanto)	149
14. Value Engineering to Achieve Low Drilling Cost, (Fata Yunus)	157
15. Formation Fracture Gradient Enhancement by Wellbore Strengthening Strategy in Tunu Mahakam Field, (Muhammad Fitriansyah, Bayu Buana Natanagara, Reinhard Aberson Panjaitan, Novrendi Saragih, Wiryawan Suraji)	165
16. Maximizing Operational Synergy for Drilling-Production-Construction in Congested Tripod Platform: Enhancing Values on South Mahakam Offshore, (Ardho Fidiansyah, Denya Pratama Yudhia, Ana Sri Redjeki, Amin Maruf, Bonifasius Muryanto, Agus Siswanto, Wahyu Priyanto, M. Fauzan Guciano, Risal Rahman)	179
17. Flow Rate Control In Multilayer Injection Using Bridge Eccentric Injection Mandrel, (Muhammad Hidayat Abqory, Ferry Apriadi, Ahmad Fakhruzan, Tito Cesar Tiantoro, Dharma Aditya Pratama)	197
18. Successful Novel Fit-For-Purpose Real Time Survey Tool Application For Drilling Exploration Well In South Sumatra, (Hedriawan Anandaputra Soemantri, Ery Mohamad Fajar Putra, Erwin Kurniawan)	207
19. Analysis And Simulation Evaluation Well Trajectory of Well CR-104 using Reverse Minimum Of Curvature Method, (Muhammad Bery, Cividi Raksadipa, Wayan Mahendra Ernata)	221
20. An Assessment of Conductor Casing Design in Relation to a Titled of Offshore Monopod Fixed Platform, (Erwinda Tanjung)	233
21. Beauty Contest Bit : ROP Optimization with Single Run Bit in Soft Cibulakan Formation and Hard Baturaja Formation on S-Type Drilling Jatiasri Field Development, (Anas Hanafiah, M Syarif Hidayat, Gondo Irawan, Aziz Muslim)	239
22. The Effect of Heating Additive Temperature of The Ash Bagasse for Improving Strength of The Cement Drilling, (Novrianti I, Rycha Melisa, Jovan Faisal, Jevi Deziyan Putra)	249
23. Simultaneous Operation Optimizations to Accelerate Well Preparation and Minimize Production Shortfall, (Alvin I. Handoko, Hanifan M. Biyanni, Bobby W. Hendarno, Rangga Saputra)	257
24. Mono Trip Cement Through Gas Lift Completion: Innovative Completion System to Develop Oil-Gas Reservoirs in The Mahakam Delta, (Moh.Furqon Daris, Adjie Ridhonmas, Boy Kundoko, Harry Murti Nugroho, Dimas Putra Paramajaya, Ferdian Liu, Fuad Ruhuddin, Widyo Eri Budiono, Ryan Wijaya, Fransiskus, Wahyudhi, Dasa Manalu)	269
25. Core Analysis and Wellbore Completion Planning for handling the Sand Problem in the wellbores at Rantau Field, (Ali Hadi Supomo, M. Hidayat Abqory)	279
26. Reservoir Redevelopment by CO2 Injection Using Compositional Model Simulation in Carbonate Oilfield, (Andry halim, Rizky Hadi H)	291
27. Surfactant Injection on Naturally Fractured Carbonate Reservoir: Simulation Modeling with Inverted 5-Spot Pattern, (Indah Widiyaningsih, Harry Budiharjo S)	305
28. Application of Sodium Lignosulfonate Surfactant Synthesized From Bagasse as an Alternative Surfactant Flooding for Light Oil Reservoir by Considering Carbon	

Number,		
	(Rini Setiati, Septorato Siregar, Taufan Marhaendrajana, Deana Wahyuningrum) .	313
29.	Optimization Waterflood Development Strategic in Mature Field Using 4 Variables Scatter Plot, Case Study : Kenali Asam Field, (Pratama Rezha Aditya, Buwono Setyo Nurretno Tri, Syamri Ricky Novaldo)	319
30.	Esterification of Polyoxy-Based Surfactant Utilizing Azeotrope Technique for Chemical Flooding Application (Ilham Ardatul Putra1, Yudha Taufantri1, Yani Faozani Alli1 and Didin Mujahidin)	329
31.	The Effect Of Electrolytes To The Performance of Polyoxy-Based Surfactant to Reduce the IFT (Yani Faozani Alli, Ilham Ardatul Putra, and Hestuti Eni).....	339
32.	Polymer Injectivity Design Tanjung Field Zone-C- Indonesia (Iqbal F, R. Agung Indra W., Syaeful A, Ricko P. Hasibuan, F. Indra P, Andi W B).....	345
33.	Challenges in Designing the Optimum Mobility Ratio for Polymer Flooding in Reservoir with High Pour Point Oil: A Case Study from Sago Field Zone-M-Indonesia (Iqbal Fauzi, Reza Bertho Zul Hakim, R. Agung Indra W., F. Indra Purba)	359
34.	Unlock EOR Potential of Carbonat Reservoir by CO2 Injection in Sukowati Irma Primasari, F. Indra Purba, Setia Bungsu K., Octaviani	371
35.	CO ₂ Injection By Huff & Puff At Jatibarang Field (Setia Bungsu, Irma Primasari, F. Indra Purba, T. Adam Aliefan)	387
36.	Pertamina EOR Production Data Mart (PDM) for Faster, More Efficient Waterflood Decision-Making (Bachtiar Andi Wardhana, Abqory Muhammad Hidayat, Chon Reza Oktokilian, Buwono Setyo Nurretno Tri, and Aryadi)	399
37.	Preparation of Implementation of MEOR by Nutrient Injection in Bentayan Field, South Sumatera (Pungki Eka Erwanto, M. Hidayat Abqory, Dea Indriani Astuti, Neil Priharto, Galang Putra Persada, Abian Adyasa Ananggadipa, Edy Subiantoro, Tutuka Ariadji).....	415
38.	Development of Optimum Well Spacing Proxy Equations on Waterflooding Project (Sutopo, Zuher Syihab, Andi B, Humam H, Amega Yasutra, Ardhi Hakim Lumban Gaol, Handita Reksi, Zaka Muflihin, Theozia Nopranda, Kharisma Idea)	425
39.	Implementing Most Recent Technology using Nanoparticles as Enhanced Oil Recovery Technique at Pattern-13, Block D2, Layer Z600 at Rantau Field, NAD. (Sigit Sulistio W, Rian Maryudi, Burra Musaba).....	435
40.	Sensitivity Study of CO2 Huff & Puff Jatibarang Using Compositional Simulator (Syaeful Azwar, Yudistira Genta B, Setia Bungsu, F. Indra Purba).....	447
41.	Wettability Alteration Induced By Surface Roughening During Low Salinity Waterflooding (Taufan Marhaendrajana, Muhammad Ghifari Ridwan, Maulana Insan Kamil, Pudji Permadi)	463
42.	Natuna D-Alpha Gas Utilization To Increase Oil Dan Gas Recoveries In Indonesia (Doddy Abdassah, Efsion Andre, dan Dedy Irawan).....	479
43.	The Solving Interpretation of Mn3o4-K Formate Mud Effect on LWD/LWT Measurement: Case Study Of Hpht Gas Field, Offshore Madura Strait, East Java (Erick Prim Putra1, Rizky Ferdiansyah HCML).....	501
44.	Saturation Log Evaluation Contribution For Workover Success Ratio In Bunyu Field (Muhammad Aldie S, Adhitya Pratama Lanadito, Elrey Fernando Butarbutar, Iwan Abdurrahman, Susan Syahdina)	519
45.	An Innovative Integrated Reservoir Characterization Driven by Modified Saturation	

Height-RRT Model (SCAL based) for a Reliable Reservoir Modeling in Complex Sandstone Reservoirs (Muhammad A Gibrata, Lamia R, Yanfidra Y and Shawket Ghedan (Dragon Oil))...	537
46. Facies Characterization and Depositional Environment Relationship of Miocene Carbonates Reservoir in S Field, Central Sulawesi (Rizaldy Rahadian, Darojatun Fakhrul D, Putu Yoga P, Luqman, Sartika Anastasia, Waris Budi R, Rahmad Wibowo I, Achmad Zaidy)	551
47. Equation comparison for saturation water in carbonate reservoir: Case study Miocene carbonate baturaja reservoir, North West Java Basin (NailulMarom,AnggaSuhikmat, JarotSetyowiyoto).....	559
48. Program of Control in Process Safety at Oil & Gas Operations phase as part of Safety Management System (Sidik Mastrilianto)	567
49. Life Cycle Assessment of Activities, Products and Services is a Priority for Achieving Sustainable Oil and Gas Company (Author:Dr.UdiSyahnoediHamzah).....	575
50. HSE Risk Monitoring Through Integrated HSE Inspection and Pre Use Inspection Program By: Firman Susilo H., Lerry Wenur	585
51. Compartment Analysis Using Fault Seal Prediction In Miocene Carbonate Reservoir of Banggai Basin And Its Implication To Field Development (Darojatun Fakhrul D, Achmad Zaidy, Luqman, Putu Yoga Pratama, Rizaldy Rahadian, Sartika Anastasia, Waris Budi R, Arsyhan Hilman Sasoni, Nailul Marom)	595
52. Unlocking New Upside Potential Kujung-I Carbonate Phe Wmo (Ajat Ramahwanto I, Riza Agustiana, Tomy Miarso, Fadri Dwishantyo).....	605
53. The uniqueness of architectural Transgressive Succession character of Keutapang formation to assist the increase production in Rantau field (Chandra Mustofa Eka Putra I, Zinnun Soulisa)	615
54. Geochemical Characteristic and Correlation of Oil Seepage Boyolali, Center Java, Indonesia (Tri Peni Setyowati, Yurry Putra Nusantara, Ario Budi Wicaksono, Anggi Yusriani, Ricky A. Tampubolon)	621
55. Successful Application of Imaginary Stratigraphy Boundary from Production Mapping for Infills Project in Mature Fields, Central Sumatra Basin, Indonesia (Rizki Kumiawan, Jati Nugroho, Ardelia Ramadani).....	633
56. Geomechanical Analysis and Sand Production Prediction in Development Well, Case Study in Bunyu Field (Muhammad Rizky Harun, Muhammad Aldie Syafaat, Husein Agil Almunawwar, Jessica Doza)	645
57. Optimization Oil Recovery for the Development of Rantau Field by Using Quantitative Interpretation Seismic : Inversion model, RMS Attribute & Density Porosity Multi Attribute (Muhammad Marwan, Naufal Zuhdi Mahmuda)	653
58. Characterization of Carbonate Reservoir in Building GeoModel Jambaran-Tiung Biru Field, Cepu Block. (Andi Fadly, Raufan Fikri, Yudha Prakasa)	659
59. The Relationship of Rock Properties and Elastic Properties by Using Integrated Seismic Quantitative Interpretation Methods to Characterize Carbonate Facies Banggai Basin (Putu Yoga Pratama, Achmad Zaidy, Darojatun Fakhru Dzakirin, Luqman, Rizaldy Rahadian, Sartika Anastasia, Waris Budi Raharjo, Argya Hastubrata Basundara, Arsyhan Hilman Sasoni, Rano,	669

60. High Resolution Biostratigraphy and Correlation Across Paleogene Boundaries In The Ombilin Basin, West Sumatra (By Irwansyah, Dedy Kurniadi, Litto Habrianta, Teuku Reza K., Ade Yogi	679
61. S-Wave Velocity Prediction and Its Application Using Rock Physics Approach in Simenggaris Block, Tarakan Basin, Northeast Kalimantan (I Dewa Made Raditya Margenta, Avesta Yudha Pratama, Mochamad Ikhsan Adityatama Wiratisna, Isnianto Saputra, Tulus Wibisono,.....	693
62. Play Analysis & Potential Exploration Opportunities of the Ombilin Basin, West Sumatera (Litto Habrianta, Teuku Reza, Fairuz F, Mia Rafida, Ramlah Hidayat, Ricko J)	703
63. Equalize Method: A New Method for Optimizing Gas Lift Spacing Design.....	721
64. Simple Act Big Effect: Daily SN Field Welltest Modification (Aliefiyan Nursanda Muklas and Rustian A.O. Hernowo)	731
65. Screen Liner Application in Down Hole Pump Assembly in Air Serdang Wells, PHE Ogan Komering (Nugroho Marsiyanto, and Supto Agus Sudarmanto)	739
66. Real Time Surveillance as Key Enabler to Digital Oil Field Operation (Mario Andre Yogasugama, and Refli Gustadi)	751
67. Field Integrated Model for Better Decision Making: Mature Field Production Optimization for Bekapai Field (Adnan Syarafi A., and Albert Tjin)	763
68. Multi Problem Resolver to Overcome Gas Interference and Sand Problem on Sucker Rod Pump in Pertamina EP Sangatta (Anggun Yogi Pamungkas, and Mochammad Yusuf Indra Surya)	775
69. New Acid Simulation Era: Matrix Acidizing as Sandstone and Limestone with Chelating Acid System (K. Amru, N.F. Prakoso, H. Kusuma, R.G. Afandi, and A.N. Muklas)	779
70. Ogan Structure Production Enhancement Through Revolutionary Strategy and Paradigm Changes of Hydraulic Fracturing at PT Pertamina EP Asset 2 Prabumulih Field, South Sumatera - Indonesia (Rasanuddin, Hanif Noor Shoffan, Arifin Eko Jati, and Antonius Dwiyanto).....	787
71. Improving Well Performance with Bottom Feeder Intake on Electric Submersible Pump in Gassy Wells (Clarissa Tyas Puspita, and Mery Luciwaty)	799
72. Bangko Shaly Sand is the Key for The Future To Be Main Reservoir and Increase Oil Production with The Fracturing Stimulation in Beruk Field Coastal Plan Pekanbaru Block Central (Hidayattul Hendra, Rayuli Wulandari, Asha Regina, Helga Meilany, Imam Muda Gunawan, M. Salman Hayatullah, M.Husni Thamrin, Ade Faisal Zainal, and Raihan)	809
73. Application of “Virtual Pressure Gauge” for The Selection of Vertical Multiphase Flow Correlation in the Gas Lifted Well to Achieve Proper Tubing Outflow Analysis (Milla Voni, and Judge Septopanduviyatmo)	815
74. Production Improvement Success Story at Intermittent Well by Gas Lift Valve Redesign Optimization at PHE ONWJ (Rizky Ahdia, Ecep Mujib, Fitrah A, and Achmad Mansur)	829
75. Production Optimization under Pigging Activity (Muhammad Andromedae, Muhammad Feldy Riza, and Muhammad Iqbal)	835
76. Shut-In Build Up Pressure (SIBU) Wells to Revive Intermittent Floating Gas Producing Wells in Tunu, Mahakam Delta (Bintan Pradika, and Dadik Hendra Kusuma)	841
77. Tangguh Big Gas Well Choke Re-evaluation: Cost Effective Problem Solution	

Boosting Deliverability (Ian Kartawijaya, Randy Candrana Dinata, Zaenuddin Ar Rofiqi, Yoseph Menanti, Dhita Saraswaty, Singgih Suganda, Muhammad Iqbal and Ferry Anantokusumo) ...	849
78. A Strategy to Optimize Well Clean Up Operation by Utilizing Existing Oily Water Treatment Facilities in Handil Mature Oil Field (Mursalim Mardin, and Diyah Wulandari)	859
79. Integrated Application of ESP & Sand Control in Sandy and Gassy Wells (Amijaya W., Ghozali F., Kusuma H., Aryanto A., Hidayat A, and Mardani P)	871
80. Best Practice of Well-Reservoir Management Approach in Gas Field with Integrated Production System Modeling (Bondan Bernadi, Angga Perbawa Riksa, I Gusti Ayu Nyoman Intan, Arif Pranoto, Sarah, and Donny Miraza)	881
81. Artificial Lift Optimization: Utilization of ESP Feedback Mode to Handle Low Productivity Index Well, Pertamina EP Field Subang (M Soleh Ibrahim, Wahyu Widiatmoko, Ikin Hardikin, Taufik Fansuri, Bayu Apriansyah, and Asep Riyadi)	899
82. Project Management of Oil & Gas Block Transfer : Case Study MH Block of Planning & Implementation of smooth Operation Transfer From TT to Pertamina (Andry halim)	909
83. Appraise Before build : Strategy to Optimize Uncertainty for Gas Field Development in Indonesia (Yan Bastian P, Gusnida, Raden Irfan, F.P., Ardhy Rachmanto, Nina Kariana)	917
84. New Generation of An Integrated Subsurface Engineering Data Management System Based on Open Source Platforms (Ori Isadhora, Salma Alkindira, Alvine Winardi Tammala, Kevin Tja, Diandra Aullia, Sugiyanto Suwono, and Herlambang Wahyu Hidayat.)	925
85. The Combination of Critical Path Method and Online Project Management Tool to Improve Accuracy of Project Schedule (Rismoyo Bayu1, Doddy Kurniawan)	937
86. Revolusiner Best Practice: Infill Placement Strategy In High Water Cut Area To Recover More Reserve: Case Study of Mature Fileds, Wk Phe (Pepi Sahal Mustafid, Rahmat Wijaya)	945
87. A Guideline to Develop Low Permeability Reservoir in Low Oil Price: Case Study Offshore North West Java Field (Wisnu Wijanarko, Annisa Prawesti)	969
88. Unfold TPN Reservoir Prospect Through Comprehensive Integrated Static-to- Dynamic Model History Matching and Uncertainty Quantification Analysis (Ecko Noviyanto, Reizky Azhar)	983
89. Optimization of Production Scenario in Jambaran Field to achieve Operation Excellent in Cepu Block (Firman Aulia, Ngurah A. Pranata, Raufan Fikri, Joko Padmono)	997
90. Integrated of Static and Dynamic Modeling Workflow for Belimbing Oil Field Development of Talangakar Sandstone Reservoir, South Sumatra Basin (Grace Stephani, Ricky Wicaksono, Karolina Bala Gadi, Abdurahman F. Muslim, Yoga Wismoyo)	1005
91. Waterflood Forecast Using Capacitance Resistance Models (CRM) (Ricky Wicaksono, humam Haryaputra, Rezha Aditya Pratama Yudha Yulianto, Budi Darmawan, Zulfikar Arif)	1013
92. Economic Evaluation of Condensate Production Enhancement Using Gas Recycling Simulation Scenarios in Jambi Merang Reservoir Area	

(Saladin Muhammad, Adi Tikam Laharan)	1023
93. Answering The Challenges For Improving Gas And Condensate Production In Mature Field. Case Study: Wet Gas Limited Reservoir (Revia Nanda P, M. Yusuf H H, I Komang S, Aidil Adham, Bayu Januar M)	1047
94. Accuracy of EOS Model Approach to Restore Depleted Reservoir Composition (Wisnu Wardana G, Doli Hasyda B, Richard Muthalib, Yogi Aditia)	1057
95. Deep Dive Waterflood Performance of TPN Field for Future Development (Budi Darmawan, Ahmad Reizky Azhar)	1073
96. New Development Strategy using Automatic Well Placement by Artificial Inteligent Application (Nila Hadinoto, dan Ahmad Reizky Azhar)	1089
97. Combination of Dual Porosity and Partial Penetration Model in Pressure Transient Analysis to Prove the Two Penetration Intervals are in Same Reservoir and To Confirm the Original Gas in Place (Kusno Kurniawan, dan Jufenilamora Nurak)	1101
98. Digital Technology in Managing Reserves and Resources Report (Reza Alfajri, Hanief Jauban, Andar P. Hutasoit, Sakti Parsaulian Siregar, dan Liston Sitanggang)	1117
99. A Shrinkage Factor Model Application to Have a Proper Oil Well Testing Measurement and Allocation Driven from a PVT Equation of State (EOS) Model (Sylvan Ramadanael Abdinni, Achmad Soendaroe, Eki Junanto, Ridwan Alfarizi, dan Wasan Sophian Juliana)	1143
100. Well Test Analysis in Fracturing Well Ogan Field (Anyan Kamandanu, dan Bastian Wismana)	1183
101. The Use of Bonded Logistic Center to Increase Efficiency in Indonesia Upstream Oil and Gas Industry (Erie Yoewono)	1195
102. Feasibility Study for Future Drilling Contract Strategy in Mahakam Block: Impact on Safety, Operation & Cost (Aldyth Sukapradja, Jefri Nurhidayat, Sanggam Lumban Gaol)	1207
103. Optimization of Shipping Distribution Line of Mini-Lng (Liquefied Natural Gas) Carrier in The Eastern Indonesia Region (Farhan Takdir, Tutuka Ariadji)	1219
104. Applying Split-Range Pressure Control as a way for Maintaining Production (Agus Salim and Yusuf Prijono)	1237
105. Success Story : First Gas South Sembakung Field - Simenggaris to PLTMG Tanah Merah , North Kalimantan (Fitriyadi, Eddy Himawan Sulistianto)	1245
106. Maintaining the Lift Gas Compressor peak efficiency; an evaluation of the Lift Gas Compressor performance degradation and the impact to the oil production (Dody Cahyadi; Andri Yuliandri)	1255
107. Implementation of Comprehensive Solution to Minimize The Transportation Discrepancy in East Java Gas Pipeline (Mangiring Manatap Limbong, Anugerah Putra Utama)	1257
108. Alternative Solution to Handle Shale Problem In Open Hole Gas Well (SBG-20) with Supertrap Manufacturing, PT. Pertamina EP Asset 3 Field Subang (Taufik Fansuri, Wahyu Widiatmoko, Bayu Apriansyah, M. Soleh Ibrahim, Asef	

Riyadi, Sandhika Ilham Pratama)	1277
119. Reduction Of H ₂ S Content In Associated Gas With Combination of Injection of H ₂ S Scavenger Chemicals Method And Saturated Catalyst Utilization As High Surface Contactor Area In Air Serdang Block Station PHE Ogan Komering (Juli Karyanto, Feby Zulkarnain)	1299
110. Case Study of Low Resisvity and Mrginal Reservoir Development in Echo Field (F. Arachman, T. Niemela, A. Mansur)	1311
111. Field Development Strategy for Coal Bed Methane Reservoir to increase Economic in Bravo field, WK GMB, South Sumatera (Fitria Dewi, Rizki Arie Fajar, Fajar Nur Rachmanto	1319
112. Brittleness Index and Toc As Potential Parameters in Brown Shale Formation Pematang Group on Outcrop in Limapuluh Koto Area, West Sumatra (Aris Buntoro, C. Prasetyadi, Barlian Dwinagara, Suranto, Allen H. Lukmana	1329
113. Strategy & Planning of Water Management System for Shale Hydrocarbon Development in Indonesia (Gathuk Widiyanto, Sunarli Ardi, Alfian Usman)	1341
114. Summary of Worldwide Experience on Oilfield Utilisation for Commercial Geothermal Energy - Possibilities for Application In Indonesia (DanielW.Adityatama, Dorman P. Purba, Mukhamad F. Umam).....	1353
115. Magnetic Thickness Detector (MTD) and Multifinger Caliper (MFC) Tool for Well Integrity Assurance in PHE ONWJ (E. Mujib, F. Arachman, J.Z. Mulia, A. Mansur, B. Widyantoro).....	1365
116. Wellhead Shut-In Pressure Prediction Method to Minimize Risk: Unlocking Potential from Wells with Reservoir Pressure Above Surface Equipment Limit (Adnan Syarafi Ashfahani, Sulistiyo, Goldy Oceaneawan, Desy Nurwijayanti)	1375
117. Spectral Noise Log to Confirm Source of Sustained Casing Pressure (Gitani Tsalitsah Dahnil, Alif Aulia Risatrio, Arif Setiaji Wibowo, Karina Sari, Herfran Rhama Priwanza, Arief Dirgantoro, Yoga Nuryanto, Tomi Sugiarto)	1393
118. Restore Flowing Annulus with PWC (Karina Sari, Yoga Nuryanto, Alif Aulia Risatrio, Arif Setiaji Wibowo, Gitani Tsalitsah Dahnil, Herfran Rhama Priwanza, Arief Dirgantoro, Tomi Sugiarto)	1415
119. Well Integrity Management System Application to Reduce Lost Production Opportunity At Medco E&P Natuna (Iman Prasodjo & Lily Gandakusuma)	1435
120. Rig less Sand Consolidation Methods, an Economic Solution to Revive Marginal Sand Prone Reservoirs; Industrialization Phase Unlocking More Than 40 BSCF of Gas Production in Mahakam Fields, Indonesia (Indah Primasari, Geraldie Lukman Wijaya, Thomas Setiawan, Sandy Warsito, Achmad Nusyirwan)	1451
121. New Technical Approach on Annulus Cementing with Coil Tubing Packer in Oil well and Gas well at Mahakam Fields, Indonesia Ramadhani Rachman, Indah Primasari, Geraldie Lukman Wijaya)	1463
122. Optimizing Hydraulic Fracturing Result through Geomechanic Approach and Design Calibration (Geraldus Yudhanto, Noke Fajar Prakoso, Kamal Hamzah)	1471
123. Production And Wells Completion Data Utilization to Improve Top Kais Formation Klamono Field (Imam Permadi, Ndirga A. Sisworo, Arie Setyadi, A. Fajrin K. Wijaya, Rai Satria	

N., Cahya	1489
124. New E-line Mechanical High Expandable Shifting Key with High Expandable Stoker Anchor (Yan Anggoro & Surya Putra Sri Utama)	1505
125. SCSSV Flapper Milling using E-line Solution (Syahrul Heriyanto, Damar Pracoyo, Surya Putra Sri Utama)	1521
126. Success Story: Offshore Well Services Using Offshore Scaffolding Pipes Structure in TBA Field Salawati (Rigless) (Rezi Quraishi, Munajat Mubaraq, Yudie Prayogo, Andri Yogaswara, Al Hafeez) ...	1535
127. Drilling Professional Skills Transfer: Petroleum Industry Support to Geothermal Development in Indonesia (Mukhamad F. Umam, Dorman P. Purba, Daniel W. Adityatama)	1545
128. Continuous Competency Development of Reservoir Engineers to Overcome the Maturity of Mahakam (Henricus Herwin, Tugiman, Raden Muhamad Prayuda Azhar, Irfan Taufik Rau)	1563
129. Enhancing Employee Engagement Through Connection, Clarity, and Commitment Based Personal Development Program (Dipta Dwitiya)	1573
130. Novel Approach to Determine and Optimize Productivity of Undulating Coiled Tubing Drilled Horizontal Well (W. Gunawan and A.H.L. Gaol)	1587
131. Estimated Shut-In Time on Cyclic Well Using Earlougher Equation (Salmaraisa Estri Suyudi, Ade Muhammad Syah, Sugiatmo Kasmungin, Kartika Fajarwati, Ari Taufiq Kramadibrata)	1605
132. Economic Study of Matrix Acidizing Stimulation and New Zone Behind Pipe (NZBP) At Araw Field Using Cost Recovery Psc and Gross Split PSC Fiscal Term (Muhammad Irfan Ardiansyah, Aldo Setiawan, Mohd. Wirawan Putra Pamungkas, Borry Frima Maulana)	1613
133. A Numerical Investigation of Polymeric Nanosphere for Enhanced Oil Recovery (Silvyadewi Rahmawati, Luky Hendraningrat, Dian Nurcahyono)	1627
134. Scientific approach petroleum laboratory analysis: Biomarker and True Boiling Point analysis in determination oil reservoir type on new discovery well at Simengaris block with the fluid sample data limitation. (Baskoro Herlambang, Fitriyadi, Dessy Yulia, Cahya Nugraha)	1635
135. Improving Workover Success Ratio Through Integrated Subsurface Evaluation: Bunyu Field Cased Study (Elrey Fernando Butarbutar, Muhammad Aldie Syafaat, Adhitya Pratama Lanadito, Iwan)	1649
136. PAPER'S TITLE (Albert Larope, Irawan Y. Tribuana, Dewi S. Brataningtyas, Andy W. Bachtiar, M. Hidayat Abqory, Ali H. Supomo, Usep Mulyadi, Herry S. Ruseno, Arif Y. Priatmoko, Budi Saroyo)	1655
137. Successful Pilot Waterflood to Determine Connectivity of Reservoir Sand in W3 Layer North Niru Structure Limau Field (Ricky Wicaksono, Burra Muzeba, Zulfikar Arif, dan Anis Nurrachmania Utami)	1665
138. A Project Management Overview: Integrated Construction and Drilling Schedule Optimization At Wellpad Area Using 4D Visual Planning on ABC Gas Project Development (Maruahal Sihombing, ST, MT., Putut Agung Nugroho, ST.)	1673

139. Comparison of DME (Dimethyl Ether) and LNG (Liquefied Natural Gas) Utilisation for Household Sector (Lusyana, Lisna Rosmayati, Fadjar Hidayat)	1681
140. Multi Mineral Petrophysic and Reservoir Modelling of Sawahtambang Formation in Sinamar Field, Ombilin Basin (Ricko Julianto, Teuku Reza, Litto Habrianta, Ramliah Hidayat, Fairuz Fakhrurozi, Mia Rafida)	1685
141. Study of Laboratory Test Analysis of Addition of NaCO_3 and Naoh on Rheology of Drilling Mud From Existing Platy Illit Minerals in Central Sumatera (Yonna Putra Akbar, Idham Khalid ST, MT., Richa Melysa ST, MT., Novrianti ST., MT)	1701
142. Evaluation of Aerated Drilling Effectivity on “BP” Well in Gbk Geothermal Field Use Guo-Ghalambor Method (Rifki Ilahi, Ghitha Naufalia, Sugiatmo Kasmungin, dan Bambang Kustono)	1707
143. Designing Optimum Injection Parameters With Low Salinity Water Injection in Sandstone Reservoir for Tangai Structure At Sukananti Field (Galih Whisnu Romantyo, Asep Kurnia Permadi, dan Andri Luthfi)	1715
144. Optimization the Advance Petrophysical Log to Make a Better Fluid Interpretation in Hydrocarbon Possible Bearing in “GG” Field, Kutai Basin, East Kalimantan. (Desma Risquillah Wisnu Putra, Hendro Kurniawan I, dan Taufik Anwar)	1749
145. Application of Genetic Algorithm for Integrated Production Optimization of Retrofit Gas Lift Utilization in Liquid Loaded Offshore Gas Condensate Field by Application of Intermittent Gas Recycling (Steven Chandra, dan Sudjati Rachmat)	1763
146. A Study of Innovative Down-Hole Water Sink Completion Technology to Improve Oil Recovery in Multilayered Reservoir (Jupriansyah Jupriansyah, dan Francisca Putri Bestari)	1775
147. Use of Coconut Shell As An Alternative Media of Water Filtration Replacement for Formation (Dito Utomo Dimantoro, Havisinah, dan Rahmi Aini Utami)	1787
148. Evaluation of Matrix Acidizing Program to Increase Production Profile of X-25 Wells, Y Field (Arno Wahyu Wibowo and Afega Yuhanza Suseno Co-Author Sari Wulandari, S.T., M.Sc.)	1799

112



Brittleness Index and Toc As Potential Parameters in Brown Shale Formation Pematang Group on Outcrop in Limapuluh Koto Area, West Sumatra



BRITTLINESS INDEX AND TOC AS POTENTIAL PARAMETERS IN BROWN SHALE FORMATION PEMATANG GROUP ON OUTCROP IN LIMAPULUH KOTO AREA, WEST SUMATRA

Aris Buntoro¹, C. Prasetyadi², Barlian Dwinagara³, Suranto¹, Allen H Lukmana¹
Petroleum Engineering Department¹, Department of Geological Engineering², Mining Engineering Department², Faculty of Mineral Technology, UPN "Veteran" Yogyakarta
email: arisbuntoro@upnyk.ac.id

Abstract

Brittleness index is an important parameter for success in hydraulic fracturing planning (Ju Hyeon Yu, et al, 2016). Jarvie et al (2007) and Wang and Gale (2009), stated that the brittleness index determines the magnitude of ductile and brittle values of the rock formations, based on their mineral content. Brittleness of shale hydrocarbon is required for initiation and propagation of fractures, and fracture re-opening. Rock formation with high brittleness value is easier to do hydraulic fracturing (Jingqi Xu, 2016).

Shale fracability can be determined based on mineralogical evaluation for optimal hydraulic fracturing planning. The XRD test of rock samples from the Brown Shale Formation, Pematang Group in the Central Sumatra Basin was conducted to obtain mineral content, which then can be used to determine the brittleness index.

A sample test of 8 rock samples was carried out from the outcrop of Brown Shale Formation, Pematang Group in Limapuluh Koto Area, as it was difficult to obtain core data from well drilling at the research site, as an approach considered representing target formation for the identification of shale hydrocarbon potential.

From laboratory test result of samples from Brown Shale Formation in Limapuluh Koto Area, it was quantitatively obtained that total organic carbon (TOC) value is 4 - 17 wt%; Brittleness Index: and 0.61 - 0.83 (average 0.73). From the results of Brittleness and TOC analysis, it can be concluded that Brown Shale Formation has a good unconventional shale hydrocarbon potential and can be used for further research, due to that oil production from conventional reservoir Indonesia in general has decreased significantly.

Keywords: unconventional, shale gas, shale oil, brittleness index, Limapuluh Koto, West Sumatra

1. Introduction

Brittleness index is an important parameter for success in hydraulic fracturing planning (Ju Hyeon Yu, et al, 2016). Jarvie et al (2007) and Wang and Gale (2009), stated that the brittleness index determines the magnitude of the ductile and brittle values of the rock formations, based on their mineral content. Brittleness of shale hydrocarbon, required for initiation and propagation of fractures, and fracture re-opening. Rock

formation with high brittleness value is easier to do hydraulic fracturing (Jingqi Xu, 2016). Based on fracture mechanics, it appears that a more brittle formation is easier to fracture (A.T. Zehnder, 2012 in Mao Bai, 2016). As a result, identifying the brittle zones in unconventional reservoirs to achieve effective fracturing has become the focus of current research (Mao Bai, 2016).

The Pematang Formation of the Central Sumatra basin has been shown to be the

primary source for the basin's 10 billion barrels of recoverable oil. This lacustrine unit, which is restricted to a series of Paleogene half-grabens, typifies the variability present in many rift source rock systems (Katz, B.J, et al, 1994). The Pematang Formation is known only in the subsurface, where it may obtain thickness in excess of 1,800 meters (Williams et al., 1985 in Katz, B.J, et al, 1994), the oil-prone Brown Shale Member may reach thicknesses in excess of 580 meters. Stratigraphically equivalent lacustrine rocks, which also display oil source rock characteristics, are present in the Ombilin basin to the southwest of the Central Sumatra (Koning and Aulia, 1984 in Katz, B.J, et al, 1994). Brown Shale Unit is based on a recent fieldwork in Karbindo Coal Mine which is part of the Pematang Formation as defined by some previous investigators (Aswan et al., 2009; Carnell et al., 2013; Widayat et al., 2013 in Edy Sunardi, 2015).

Core samples of 8 rock samples were sampled from the Brown Shale in Limapuluh Koto Area, due to the difficulty of obtaining core data of Pematang Formation from well drilling at the research site, as an approach considered to represent target formation for potential identification shale hydrocarbon.

Brittleness is defined as how strong a material breaks at a given pressure. Brittleness analysis is very important in planning hydraulic fracturing on shale hydrocarbon to reduce production costs and increase initiation efficiency and fracture propagation.

Determination of the original total organic carbon (TOC_o) of a source rock provides a quantitative means to estimate the total volume of hydrocarbons that it can be generated depending on kerogen type.

Heavily explored areas generally have source rocks that are thermally mature, so it is not straightforward to determine original values. Consideration of the components of TOC assists in understanding how to restore highly mature TOC to TOC_o (Jarvie, 2007).

In this paper, we will discuss two parameters of shale play for determining the potential of shale hydrocarbon in the Pematang Group Formation, namely the brittleness index and TOC. In this study, core samples were taken from the Brown Shale Formation in Limapuluh Koto Area, West Sumatra which according to some researchers was equivalent to the Pematang Group Formation, Central Sumatra Basin. Map of Outcrop Location for Limapuluh Koto, West Sumatra is shown in Figure-1.

2. Basic Theory

The Central Sumatra Basin is the largest tertiary sedimentation hydrocarbon basin in Indonesia. Judging from its tectonic position, the Central Sumatra Basin is the back basin of the arc.

Rift (Pematang Siklis) as a whole, the filling sediments of the basin in the extensional tectonic phase (rift) are classified as Pematang Group which is composed of claystone, carbonaceous shale, fine sandstone and various siltstone. Weak seismic reflection and strong amplitude in seismic data give an indication of facies associated with lacustrine environment. Precipitation at the beginning of the rifting process is in the form of sedimentation of land clusters and lacustrine from the Lower Red Bed Formation and Brown Shale Formation upward towards the late rifting phase, sedimentation is completely changed to the lacustrine environment and deposited by the Pematang Formation as Lacustrine Fill sediments (Figure-2 and Figure-3).

3. Methodology

Jarvie et al. (2007) proposed a definition of the Brittleness Index (BI) based on the mineral composition of rocks, and divided minerals which were most brittle with the number of constituent minerals in rock samples, namely quartz, carbonate, and clay, and most of the quartz was a stiff mineral, indicating high level of brittleness, which is shown in Equation-1. Equation is shown by Eq.1 below.

$$BI_{Jarvie (2007)} = \frac{Qz}{Qz + Ca + Cly} \dots(1)$$

where Qz is fractional quartz content, Ca is calcite content, and Cly is clay content by weight in the rock.

There are other ways that are easier to determine brittleness with only clay mineral content. If the shale mineral component is higher than 35 - 40%, this indicates ductile behavior and is not economically feasible in the shale gas reservoir (Britt and Schoeffler, 2009).

The BI and brittleness average are commonly used to define brittleness in quartz-rich shales. In the case of the Barnett Shale, brittleness is dominated by quartz, whereas ductility is dominated by clay content and calcite, and from the data population is classified into four equal petrotypes, setting the BI between 0 and 0.16 as ductile, between 0.16 and 0.32 as less ductile, between 0.32 and 0.48 as less brittle, and greater than 0.48 as brittle (Perez, 2014).

4. Case Study

4.1 Brittleness Index

From mineralogy analysis, several shale samples from the fieldwork were selected, representing the target hydrocarbon shale formations (Brown Shale Formation, Pematang Group), from the Limapuluh Koto Area, namely Sarilamak and Batubalang, as shown in Figures-4 and 5.

The results of the bulk analysis and clay oriented analysis of XRD are shown in Table-1 and Table-2, which in general from

Table-1 shows the dominance of quartz (quartz) minerals, and furthermore the brittleness index can be calculated using Jarvie (2007) equation resulting the average brittleness outcrop samples (shale) in the Limapuluh Koto Area is 0.73 (Figure-6), while from XRD analysis for clay oriented shows that the content of clay (Illite and Kaolinite) is less than 40% (Table-2). This clay content of less than 40% will not interfere hydraulic fracturing as it is not swelling when dissolved in water during a hydraulic fracturing process.

From the results of the bulk analysis, plots are made on the ternary diagram according to Perez (2013). Perez divides brittleness into three categories, namely Brittle Quartz, Brittle Carbonate and Ductile. Bulk analysis test results from XRD to outcrop samples Limapuluh Koto is included in the Brittle Quartz category as shown in Figure-7.

4.2 Total Organic Carbon (TOC)

Determination of the original total organic carbon (TOC_o) of a source rock provides a quantitative means to estimate the total volume of hydrocarbons that can be generated depending on kerogen type. Heavily explored areas generally have source rocks that are thermally mature, so it is not straightforward to determine original values. Consideration of the components of TOC assists in understanding how to restore highly mature TOC to TOC_o (Jarvie, 2007).

Total organic carbon in a source rock comprises three basic components: (1) organic carbon in retained hydrocarbons as received in the laboratory (C_{HC}); (2) organic carbon that can be converted to hydrocarbons, C_C , called convertible carbon (Jarvie, 1991) or reactive or labile carbon (Cooles et al., 1986); and (3) a carbonaceous organic residue that will not yield hydrocarbons because of insufficient hydrogen commonly referred to as inert carbon (Cooles et al., 1986; Jarvie, 1991), dead carbon, or residual organic carbon (C_R). As organic matter matures, C_C is converted

to hydrocarbons and a carbonaceous residue, and eventually resulting in a reduced TOC when expulsion occurs (Jarvie, 2007). Total Organic Content (TOC) result of outcrop samples from Limapuluh Koto Area can be seen in Table-3.

Based on the cross plot of data between S1 + S2 versus TOC (Figure-8) on the outcrop samples from Limapuluh Koto Area, the TOC content is 4 - 17 wt% so that it can be categorized as good to excellent in the source rock category, S1 + S2 values of 16 - 58 mg / g have good hydrocarbon potential, so that the source rock can produce oil.

5. Result and Discussion

Shale parameters to enhance commercial production are: TOC > 2%; Moderate clay content < 40% (Matt McKeon, 2013), and Brittleness Index > 0.48 (Perez, 2014). Based on those parameters, the result of laboratory work for outcrop samples from Limapuluh Koto Area is summarized in Table-3.

6. Conclusion

XRD analysis results of Limapuluh Koto shale samples show that the outcrop samples from Limapuluh Koto is categorized as the brittle shale because of the dominant quartz (quartz rich), and the overall dominant shale samples is brittle.

Based on the correlation of laboratory analysis results with shale parameters to enhance commercial production (Matt McKeon, 2013 and Perez, 2014), Shale Brittleness Index, Moderate clay content, and TOC, Brown Shale members of the Pematang Group Formation meet the following criteria :

- TOC: average 8.18% (> 2%),
- Moderate clay content: average 24.04 (< 40%),
- Brittleness Index shale: average 0.73 (> 0.48).

Outcrop samples from Limapuluh Koto Area have TOC content of 4 - 17 wt% so that it is categorized as good to excellent in the source rock category. S1 + S2 value of 16 - 58 mg/g has good hydrocarbon potential so that the source rock can produce oil.

From the results of Brittleness and TOC analysis, it can be concluded that Brown Shale Formation has a good unconventional shale hydrocarbon potential and can be used for further research, due to that oil production from conventional reservoir Indonesia in general has decreased significantly.

7. Recommendation

Samples from the surface (outcrop) or from the subsurface (core and cuttings) are needed for more representative results

8. Acknowledgement

The authors would like to thank the PHE & BSP Consortium Join Study of Unconventional Hydrocarbon Resources in CPP Block for their data contribution. We would like to thank PT. Karbindo Abesyapradhi for access to the sampling.

9. References

- Abdul Haris, Iskandarsyah, and A. Riyanto., 2017. Brittleness modelling of shale gas reservoir: Case study of Pematang formation, Central Sumatera basin, American Institute of Physics (Jan. 2007) 62.
- Bai, M., 2016. Why Are Brittleness And Fracability Not Equivalent In Designing Hydraulic Fracturing In Tight Shale Gas Reservoirs, Geomechanics Consultant, Houston, USA.
- Camell, A. et al., 1998. The Brown Shale of central Sumatra: A Detailed Geological Appraisal of A Shallow Lacustrine Source Rock, Proceeding, Indonesian Petroleum Association, Twenty-Sixth Annual Convention.
- Edy Sunardi.,2015. The Lithofacies Association of Brown Shales In Kiliran Jao Sub-basin, West Sumatra Indonesia, Indonesian Journal on Geoscience Vol. 2 No. 2 August 2015: 77-90.
- Jarvie, D.M, 2007. Unconventional Shale-Gas Systems: The Mississippian Barnett

Shale Of North-Central Texas As One Model For Thermogenic Shale-Gas Assessment, AAPG Bulletin, April 2007, ReseachGate.

Jingqi Xu., 2016. Brittleness and Rock Strength of the Bakken Formation, Williston Basin, North Dakota.

Ju Hyeon Yu, et al, 2016. Brittleness analysis study of shale by analyzing rock properties

Katz, B.J., 1994. Stratigraphic and lateral variations of source rock attributes of the Pematang Formation, Central Sumatra, AAPG Internationol Conference & Exhibilion '94, Kuala Lumpur, Malaysia.

McKeon, M., 2013. Horizontal Fracturing in Shale Plays, Halliburton.

Perez, R. and Marfurt, K., 2014. Mineralogy-based brittleness prediction from surface seismic data: Application to the Barnett Shale, ConocoPhillips School of Geology and Geophysics, Norman, Oklahoma, USA.

Soroush, H., 2013. Non-conventional Geomechanics for Unconventional Resources, Society of Petroleum Engineers Distinguished Lecturer Program.

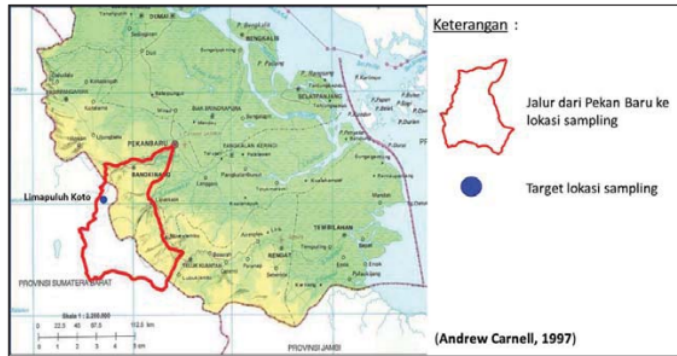


Figure 1. Map of Outcrop Location Limapuluh Koto, West Sumatra

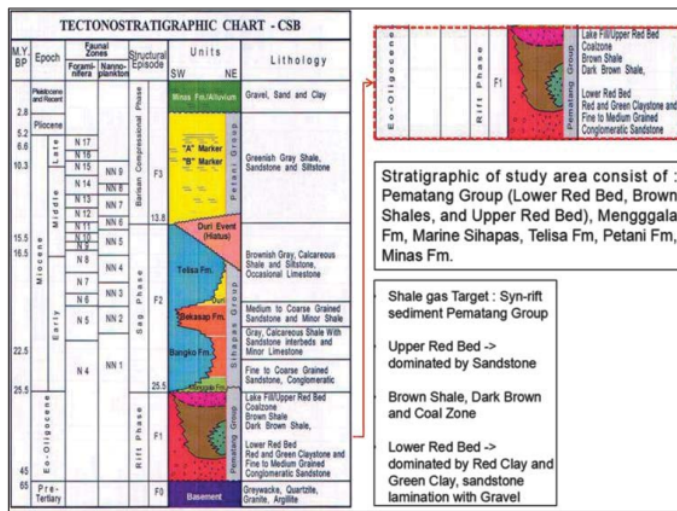


Figure 2. The tectonostratigraphic chart of Central Sumatra Basin (after Heidrick and Aulia, 1993; the Pematang Group is shown in a black circle, dalam Edy Sunardi, 2015)

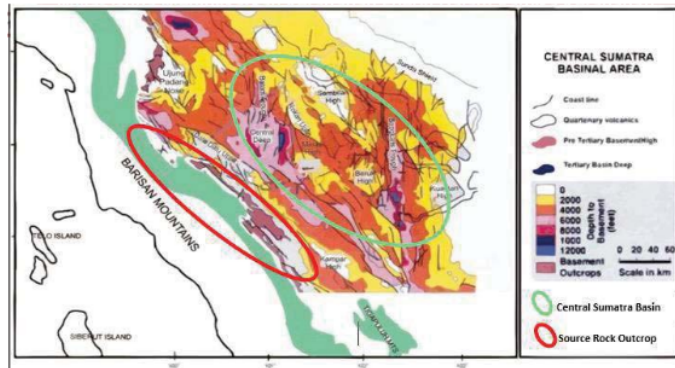


Figure 3. Basin Configuration of Central Sumatra (BPPKA-PERTAMINA, 1996)

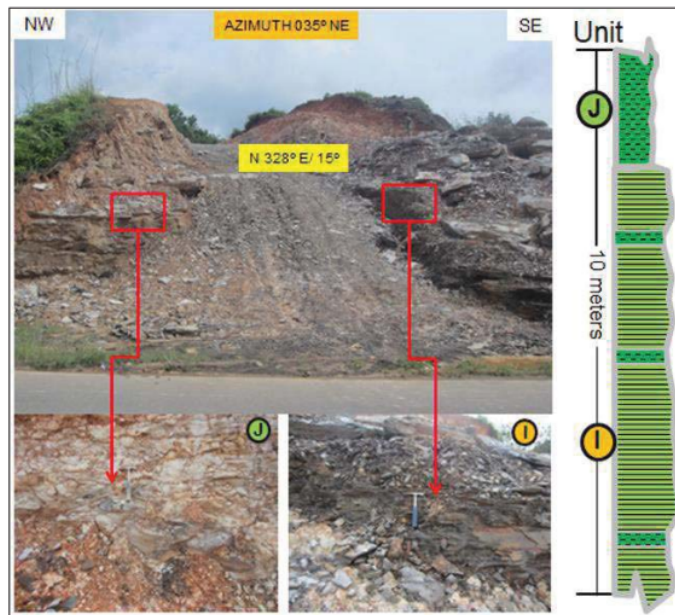


Figure 4. Outcrop location of claystone and shale along with its profile in Sarilamak Village (Limapuluh Koto Area) Geographic Coordinate: E 100,688°; S 0.155°

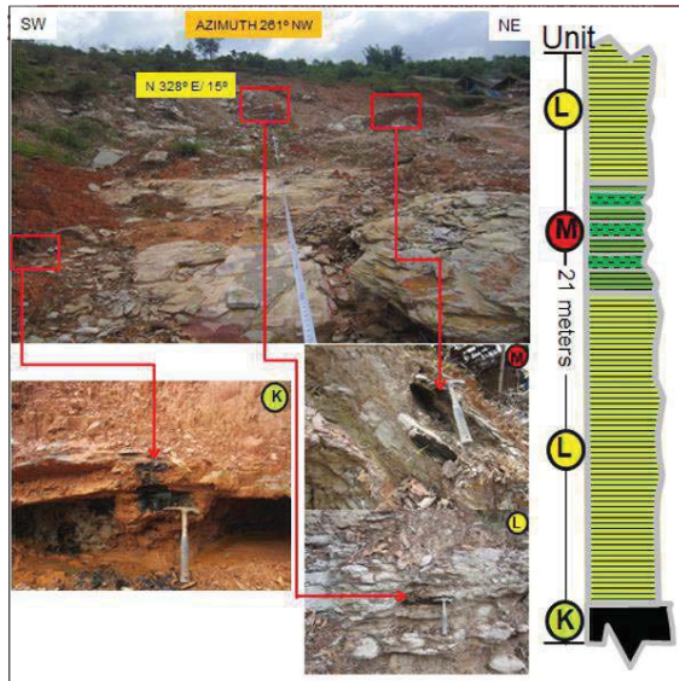


Figure 5. Outcrop location of shale and coal along with its profile in Batubalang Village (Limapuluh Koto Area) Geographic Coordinate: E 100,688°; S 0.155°

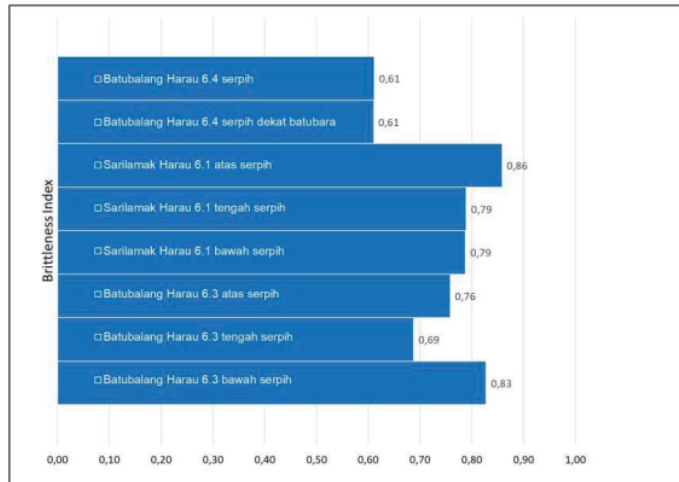


Figure 6. Graph of Calculation Results of the Brittleness Index with the Jarvie equation

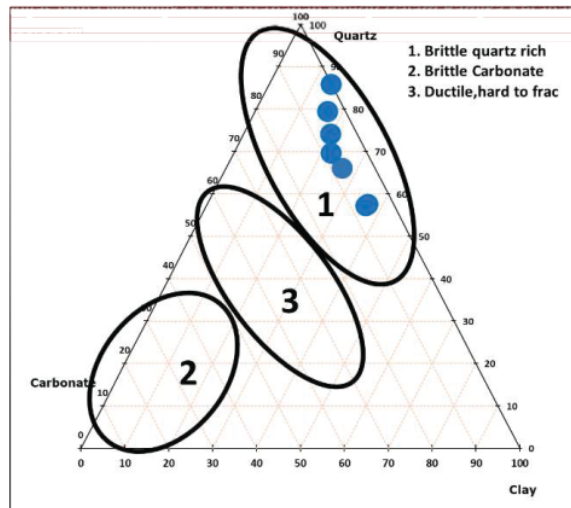


Figure 7. Plots on ternary diagrams for grouping the level of brittleness for outcrop samples in Limapuluh Koto Area (Sarilamak and Batubalang)

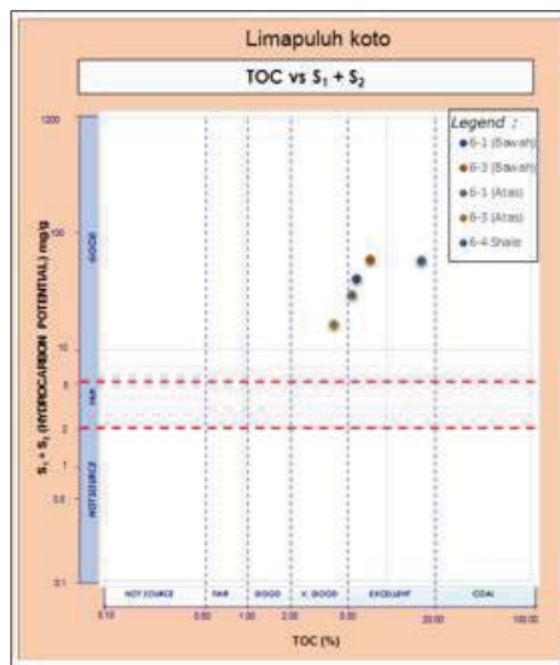


Figure 8. Cross plot TOC vs S1+S2 Outcrop Sampel dari Limapuluh Koto Area

Table 1. Bulk Analysis Results from XRD at Outcrop Samples Limapuluh Koto Area (Sarilamak and Batubalang Villages)

No	Sample ID	Quartz (%)	Calcium (%)	Clay		Other Mineral	
				Illite (%)	Kaolinite (%)	Feox (%)	Pyrite (%)
1	Batubalang Harau 6.1 Shale	57.59		16.45	20.1		5.86
2	Batubalang Harau 6.4 Shale (near coal)	57.09		11.20	25.22		6.49
3	Sarilamak Harau 6.1 Upper Shale	85.83		6.11	8.06		
4	Sarilamak Harau 6.1 Middle Shale	74.08		9.34	10.46	6.12	
5	Sarilamak Harau 6.1 Lower Shale	74.5		9.04	11.07	5.39	
6	Batubalang Harau 6.3 Upper Shale	69.66		8.14	14.06	8.14	
7	Batubalang Harau 6.3 Middle Shale	66.1	3.64	11.09	15.35		3.82
8	Batubalang Harau 6.3 Lower Shale	79.39		5.67	10.91		4.02

Table 2. Clay Oriented Analysis Results from XRD at Outcrop samples Limapuluh Koto Area (Sarilamak and Batubalang Villages)

No	Sample ID	Clay		
		Illite+Kaolinite (%)	Smectite (%)	Chlorite (%)
1	Batubalang Harau 6.1 Shale	36.55		
2	Batubalang Harau 6.4 Shale (near coal)	36.42		
3	Sarilamak Harau 6.1 Upper Shale	14.17		
4	Sarilamak Harau 6.1 Middle Shale	19.8		
5	Sarilamak Harau 6.1 Lower Shale	20.11		
6	Batubalang Harau 6.3 Upper Shale	22.20		
7	Batubalang Harau 6.3 Middle Shale	26.45		
8	Batubalang Harau 6.3 Lower Shale	16.59		
	Minimum	14.17		
	Maximum	36.55		
	Average	24.04		Less than 40%

Table 3. Total Organic Content (TOC) result of outcrop samples from Limapuluh Koto Area

No	Sample ID	Sample Type	TOC	S1 (mg/g)	S2 (mg/g)	S3 (mg/g)	Tmax (°C)
1	Batubalang Harau 6.1 Shale	Outcrop					
2	Batubalang Harau 6.4 Shale (near coal)	Outcrop	17.30	0.72	56.67	2.35	434
3	Sarilamak Harau 6.1 Upper Shale	Outcrop	5.68	0.88	28.47	2.22	433
4	Sarilamak Harau 6.1 Middle Shale	Outcrop		-			
5	Sarilamak Harau 6.1 Lower Shale	Outcrop	6.08	1.15	38.80	0.79	432
6	Batubalang Harau 6.3 Upper Shale	Outcrop	4.23	0.56	15.89	2.25	420
7	Batubalang Harau 6.3 Middle Shale	Outcrop		-			
8	Batubalang Harau 6.3 Lower Shale	Outcrop	7.59	2.87	55.97	0.79	436
	Minimum		4.23	0.56	15.89	0.79	420
	Maximum		17.30	2.87	55.97	2.25	436
	Average		8.18	1.24	39.16	1.68	431

No	Parameter	Reference	Lab Result
		Matt Mc Keon, 2013	
1	TOC	>2%	8.18 (Avg)
2	Moderate clay content	<40%	24.04 (Avg)
		Perez, 2014	
3	Brittleness Index	>0.48	0.73 (Avg)

ATMI 2018_Brittleness Index and TOC

ORIGINALITY REPORT

10%

SIMILARITY INDEX

10%

INTERNET SOURCES

0%

PUBLICATIONS

0%

STUDENT PAPERS

PRIMARY SOURCES

1

www.iatmi.or.id

Internet Source

5%

2

www.alinea.id

Internet Source

5%

Exclude quotes On

Exclude matches < 5%

Exclude bibliography On