

# HYDROTHERMAL ALTERATION AND VEIN TYPES OF THE RANDU KUNING PORPHYRY CU-AU DEPOSIT AT SELOGIRI AREA, WONOGIRI

*by* Sutarto Sutarto

---

**Submission date:** 04-Oct-2020 04:07PM (UTC+0700)

**Submission ID:** 1404586140

**File name:** n\_SDG\_Suatrto\_et.al.,\_Hydrothermal\_Alteration\_and\_Vein\_Types.pdf (1.25M)

**Word count:** 4228

**Character count:** 24950

ISSN 1907-5367

# **buletin**

## **SUMBER DAYA GEOLOGI**

Volume 9 No. 1, Mei 2014



Kementerian Energi dan Sumber Daya Mineral

**Badan Geologi**

Pusat Sumber Daya Geologi

Buletin Sumber Daya Geologi	Vol. 9	No. 1	Halaman 1 - 68	Bandung Mei 2014	Terakreditasi sebagai Majalah Berkala ilmiah kutipan keputusan kepala Lembaga Ilmu Pengetahuan Indonesia No. 395/D/2012 Tanggal 24 April 2012
--------------------------------	--------	-------	-------------------	---------------------	--

### DAFTAR ISI

#### MAKALAH ILMIAH

- 1 - 12      **ZONASI POTENSI MINERALISASI BESI-TEMBAGA-TIMBAL-SENG  
MENGUNAKAN DATA GEOKIMIA DAN GEOLOGI BERBASIS SISTEM  
INFORMASI GEOGRAFIS DI KABUPATEN SOLOK, PROVINSI SUMATERA  
BARAT**  
Oleh : Sabtanto Joko Suprpto, Ildrem Syafri, dan Yoga Andriana
- 13 - 27      **PENAFSIRAN SEBARAN BATUBARA DENGAN METODE SEISMIC REFLEKSI  
DI DAERAH TEBO TENGAH, KABUPATEN TEBO PROVINSI JAMBI**  
Oleh : Teuku Ishlah dan Suhada Arsadipoera
- 28 - 42      **KARAKTERISTIK BATUAN INDUK HIDROKARBON FORMASI CIBULAKAN  
DI DAERAH PALIMANAN, CIREBON, JAWA BARAT**  
Oleh : Praptisih dan Kamtono
- 43 - 55      ***HYDROTHERMAL ALTERATION AND VEIN TYPES OF THE RANDU KUNING  
PORPHYRY Cu-Au DEPOSIT AT SELOGIRI AREA, WONOGIRI***  
Oleh : Sutarto, Arifudin Idrus, Sapto Putranto, Agung Harjoko, Lucas D. Setijadji,  
Franz M. Meyer dan Rama Danny
- 56 - 68      **DELINIASI POTENSI BIJIH BESI DI DAERAH SIJUK, BELITUNG UTARA  
BERDASARKAN ANALISIS DATA GEOMEGNET DAN *VERY LOW  
FREQUENCY (VLF)***  
Oleh : Tatang Padmawidjaja

#### SARI MAKALAH

Oleh : Redaksi

#### GALERI FOTO

Oleh : Rizki Novri Wibowo, S.Ds

#### PEDOMAN PENULISAN KARYA ILMIAH

Oleh : Redaksi

# **HYDROTHERMAL ALTERATION AND VEIN TYPES OF THE RANDU KUNING PORPHYRY CU-AU DEPOSIT AT SELOGIRI AREA, WONOGIRI**

Sutarto<sup>1,2)</sup>, Arifudin Idrus<sup>2)</sup>, Sapto Putranto<sup>3)</sup>, Agung Harjoko<sup>2)</sup>, Lucas D. Setijadi<sup>2)</sup>, Franz M. Meyer<sup>4)</sup> and Rama Danny<sup>1)</sup>

<sup>1)</sup>Universitas Pembangunan Nasional "Veteran" Yogyakarta

<sup>2)</sup>Universitas Gadjah Mada Yogyakarta

<sup>4)</sup>PT. Alexis Perdana Mineral

<sup>4)</sup>RWTH Aachen University Germany

Contact: [sutarto\\_geo@upnyk.ac.id](mailto:sutarto_geo@upnyk.ac.id) atau [sutarto\\_geoupn@yahoo.co.id](mailto:sutarto_geoupn@yahoo.co.id)

## **Abstract**

Many Tertiary hydrothermal altered dioritic composition intrusive rocks were found at the Randu Kuning area and its vicinity, Selogiri, including hornblende microdiorite, hornblende-pyroxene diorite and quartz diorite. The hydrothermal fluids which responsible for the alteration and mineralization at the area is associated with the occurrence of the hornblende microdiorite intrusion.

The alteration zone at the Randu Kuning area and its vicinity can be divided into several hydrothermal alteration zones, such as potassic (magnetite-biotite-K feldspar), phyllic (chlorite-magnetite-epidote-carbonate), phyllic (quartz-sericite-chlorite) and argillic (clay mineral-sericite). The alteration pattern in the Randu Kuning porphyry Cu-Au deposit is typically a diorite model characterising by the domination of potassic alteration and phyllic zone. Phyllic and argillic alteration types are restrictive found within the fault zones.

A lot of porphyry vein types were found and observed at the Randu Kuning area, and classified into at least seven vein types. The paragenetic sequence of those veins from the earliest to the latest respectively are 1). Magnetite-chalcopyrite±quartz-biotite veinlets, 2). Quartz±magnetite (A type)veins, 3). Banded/Laminated quartz-magnetite (M type) veins, 4). Quartz±K feldspar (B type)veins, 5). Quartz with thin centre line sulphide (AB type) veins, 6). Pyrite±chalcopyrite (C type) veinlets, and 7). Pyrite-quartz±chalcopyrite±carbonate (D type) veins. Gold and copper mineralisation of the Randu Kuning Porphyry Cu-Au deposit, mostly related to the presence of quartz veins/veinlets containing sulfide i.e. Quartz with thin centre line sulphide veins, Pyrite±chalcopyrite veinlets, and Pyrite-quartz±chalcopyrite±carbonate veins.

**Key words: porphyry, veins, paragenetic sequence**

## **Abstrak**

Beberapa batuan intrusi berkomposisi dioritik Tersier yang telah mengalami ubahan hidrotermal di temukan di daerah Randu Kuning dan sekitarnya, Kecamatan Selogiri, diantaranya adalah mikrodiorit hornblende, diorit hornblende-piroksen dan diorit kuarsa. Fluida hidrotermal yang bertanggung jawab pada proses ubahan dan mineralisasi di daerah telitian berkaitan dengan proses magmatisme yang membentuk intrusi mikrodiorit hornblende.

Zona ubahan hidrotermal di daerah Randu Kuning dan sekitarnya dibagi menjadi beberapa zona, diantaranya adalah potasik (magnetit-biotit-K. feldspar), profilitik (klorit-magnetit-epidot-karbonat), filik (kuarsa-serisit-klorit) dan argilik (mineral lempung-serisit). Pola ubahan hidrotermal pada endapan porfiri Cu-Au Randu Kuning adalah tipikal model diorite, yang dicirikan oleh luasnya sebaran zona potasik dan profilitik serta zona filik dan argilik yang hanya ditemukan terbatas pada zona sesar.

Sedikitnya terdapat tujuh macam urat tipe porfiri telah ditemukan di wilayah Randu Kuning dan sekitarnya, diantaranya berturut-turut dari yang paling awal terbentuk adalah 1), Magnetit-kalkopirit±kuarsa-biotit, 2). Kuarsa±magnetit (tipe A), 3). Kuarsa-magnetit berlapis (tipe M), 4). Kuarsa±K.feldspar (tipe B), 5). Kuarsa dengan sulfida di bagian tengah, 6).Pirit±kalkopirit (tipe C) dan 7). Pirit-kuarsa+kalkopirit+karbonat (tipe D). Mineralisasi tembaga dan emas sebagian besar terkait dengan urat kuarsa dengan sulfida di bagian tengah, urat pirit±kalkopirit dan urat pirit-kuarsa+kalkopirit+karbonat.

**Kata Kunci: porfiri, urat, sekuen paragenetik**



## Introduction

The Randu Kuning Porphyry Cu-Au prospect area is situated at Selogiri District, Wonogiri Regency, Central Java, Indonesia. This location is reachable with four wheel or two wheel vehicle, about 40 km to the south-east from Solo City, or approximately 70 km east of Yogyakarta City.

The Randu Kuning area and its vicinity is a part of the East Java Southern Mountain Zone, mostly occupied by both plutonic and volcanic igneous rocks, volcanic clastic rocks, silicic clastic rocks as well as carbonate rocks. Magmatism and volcanism in this area is represented by the Mandalika Formation consisting mostly volcanic igneous rocks such as andesite-dacitic lavas, volcanoclastic rocks namely dacitic tuffs, and volcanic breccias. The rock unit was intruded by dioritic intrusive rocks. Volcanoclastic rocks of the Semilir Formation, as a product of the huge eruption, are exposed and scattered at the south of Selogiri area such as tuffs, lapilli tuffs, dacitic pumice breccias, tuffaceous sandstones and tuffaceous shales.

Many dioritic composition intrusive rocks were found at the Randu Kuning area, consist of pre- syn and post-mineralisation intrusive rock. However, it is difficult to distinguish this kind of dioritic intrusive in the area, due to the similar composition and texture with varying relationship to alteration-mineralisation. Imai *et al.* (2007) have identified three different type of intrusive rocks, namely hornblende andesite porphyry, hornblende diorite porphyry and hornblende diorite. Muthi *et al.*,(2012) recognized that there are at least four type of diorite at the Randu Kuning area i.e. coarse grain diorite, medium diorite, microdiorite and porphyritic plagioclase diorite.

Mineralisation type of Randu Kuning prospect was interpreted as a porphyry Cu-Au ore deposit and a number gold-base metals epithermal deposits in its surrounding (Imai *et al.*, 2007; Suasta and Sinugroho, 2011; Corbett, 2011, 2012 and Muthi *et al.*, 2012). The intensive erosion process has uncovered the upper parts of the porphyry deposit, whereas several gold-base metal epithermal are preserved along adjacent ridge (Suasta and Sinugroho, 2011). Many epithermal veins were also found and crosscut into deeply porphyry veins and related potassic alteration (Suasta and Sinugroho, 2011; Corbett, 2012). This study will focus on the paragenetic sequence of the porphyry vein type only.

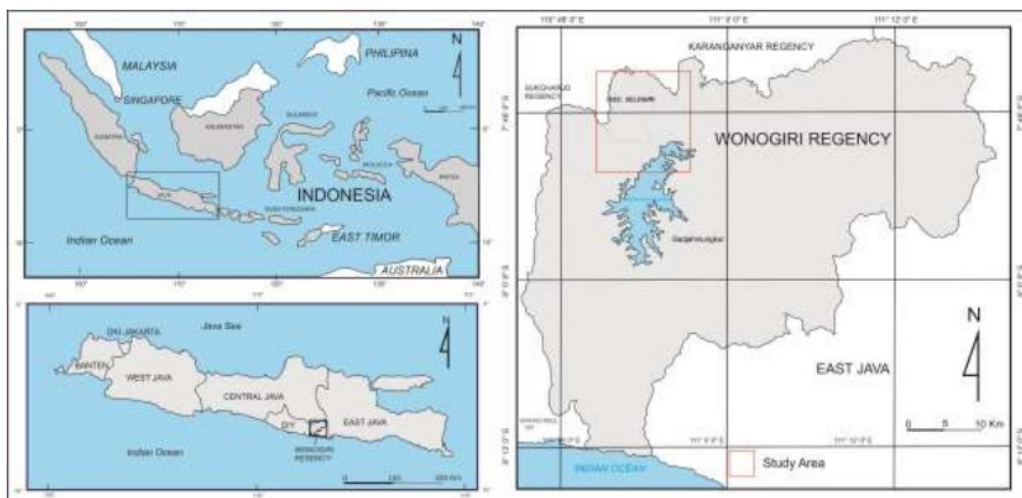


Fig.1. Location map of Selogiri area, Wonogiri

Porphyry copper-gold deposits and epithermal gold-base metal deposits are both associated with subduction related at convergent plate margins and many are found and spread in the southwest Pacific rim (Corbett and Leach, 1996). Although the two deposit types have different alteration and mineralisation characteristic, but commonly show a close spatial and temporal relationship (Hedenquist *et al.*, 1998; Corbett, 2008; Sillitoe, 2010). Related to the magmatic source, Corbett (2011) suggested the possible mechanisms for the formation of low sulphidation epithermal Au overprinting the porphyry Cu-Au system at the Randu Kuning, that are a). The gold-base metal epithermal were deposited from the cooling magmatic source at depth as a late stage

event of the main porphyry Cu-Au system, and b). The epithermal Au related with the emplacement of new magmatic source at depth.

Suasta and Sinugroho (2011), had identified four types of hydrothermal alteration, i.e. potassic, prophyllitic, argillic and phyllic and reported that the hornblende microdiorite was potassic-propylitic altered and mineralize, otherwise the hornblende diorite was prophyllitic altered only. Retrograde phyllic (silica-sericite-chlorite-pyrite) only locally overprints prograde potassic-prophyllitic zone, mainly adjacent to fault zone and breccias (Corbett, 2012). In over all, the alteration zone is dominated by potassic and prophyllitic type, and lacking with argillic and phyllic type. A dioritic composition range of the intrusive rocks type and the domination of the potassic and prophyllitic zone, based on the porphyry alteration model (Pirajno, 1992; 2009) suggested that the alteration model of the Cu-Au porphyry ore deposit in the study area is more similar to the diorite model rather than the quartz monzonite model.

## **Method**

This paper is a preliminary study and part of the dissertation research. This paper had also been presented in the HAGI-IAGI Joint Convention Medan 2013 with some modifications. The data used in the paper are limited on the field observation and drilling core logging as well as polarisation microscopic and megascopic observation.

## **Regional Geology**

Magmatic arc of Java Island is part of Sunda-Banda arc, extending from Sumatra trough Java to east of Damar Island which has a length about 3.700 km, known has many potential ore deposits (van Leeuwen, 1994; Carlile and Mitchell, 1994). The arc is the longest arc in Indonesia, developed by northwards subduction of the Indian-Australian Oceanic Plate beneath the southeastern margin of Eurasian continental plate, named the Sundaland (Hamilton, 1979; Katili, 1989). The Tertiary magmatism on Java could be divided into two periods, i.e. the Late Eocene – Early Miocene magmatism and the Late Miocene-Pliocene magmatism (Soeria-atmadja *et al.*, 1991). The volcanic rocks of Late Eocene – Early Miocene magmatism are widespread at alongside southern part of Java, which usually has tholeiitic affinity, while the Late Miocene-Pliocene magmatism has Calc Alkaline-High K Calc Alkaline series, distributed mostly on the northward from the Late Eocene – Early Miocene magmatism (Soeria-atmadja *et al.*, 1991). The eldest igneous rock of the Tertiary magmatic arc of Java is found at Pacitan area, East Java that showed age of about  $42,73 \pm 9,87$  Ma. This sample was taken from tholeiitic lava andesite of Besole Formation (Soeria-atmadja *et al.*, 1994; Sutanto *et al.*, 1994).

Magmatism-volcanism products at Selogiri area are indicated by the abundant of igneous rocks and volcanic clastic rocks of Mandalika and Semilir Formation as part of the Late Eocene-Early Miocene magmatism. A K/Ar age of the diorite porphyry within Mandalika Formation in the south flank of a wall of the depression is 21.7 Ma (JICA-JOGMEG, 2004, in Imai *et al.*, 2007). The eruption and deposition of the Semilir Formation are believed as the final stage of volcanic activity in the Southern Mountains arc, which distributed over a wide area and may be comparable to the Pleistocene eruption of Toba in Sumatra (Smyth *et al.*, 2008). After the Semilir eruption, there was a lull in volcanic activity during the Midle Miocene (Smyth *et al.*, 2008), followed by the movement in Late Miocene-Pliocene arc activity to the north of the Late Eocene-Early Miocene of the Southern Mountain arc. Surono *et al.* (1992) interpreted that the Selogiri area is on the border between the western and the eastern part of the Southern Mountain, so there is contact between the Semilir Formation and Mandalika Formation, and it found at the Selogiri area.

## **Geology of the Selogiri Area**

There are many rocks types found at the Selogiri area and its surrounding, such as volcanic breccias, andesite lavas, tuffs, and many igneous intrusive rocks such as diorites and andesites of the Miocene Mandalika and Semilir Formations, unconformably underlie Quaternary volcanic rocks of Lawu and Merapi

Volcanoes. Most of the Tertiary rocks have been strongly hydrothermal altered; causing primary rock forming minerals (feldspars, hornblendes, pyroxenes), were replaced by secondary minerals (chlorites, carbonates, quartzs, hematites). These rocks lithostratigraphically could be grouped into 6 (six) rock units, i.e.: pumice breccia of Semilir, volcanic breccia of Mandalika, intrusive rocks, hydrothermal breccia, volcanic breccia of Lawu Volcano, and aluvial deposit. Based on the observation both on the surface outcrops and drilling core samples, the intrusive rocks at the study area consist of hornblende-pyroxene diorite (previous researcher called as medium diorite), hornblende microdiorite and quartz diorite.

*Hornblende-pyroxene diorite:* generally it shows gray colour in fresh condition (lighter than hornblende microdiorite), porphyritic texture (moderate-strong), having medium crystal size (1-2 mm) with pyroxene and hornblende phenocrysts size varies up to 2 cm. Contain high proportion of plagioclase or at about 35-50 percent with lesser amount of hornblende and pyroxene (3-8 percent). At the contact with the microdiorite, most of the primary minerals generally altered to the secondary minerals formed potassic zones and gradually became into prophyllitic zone outward.

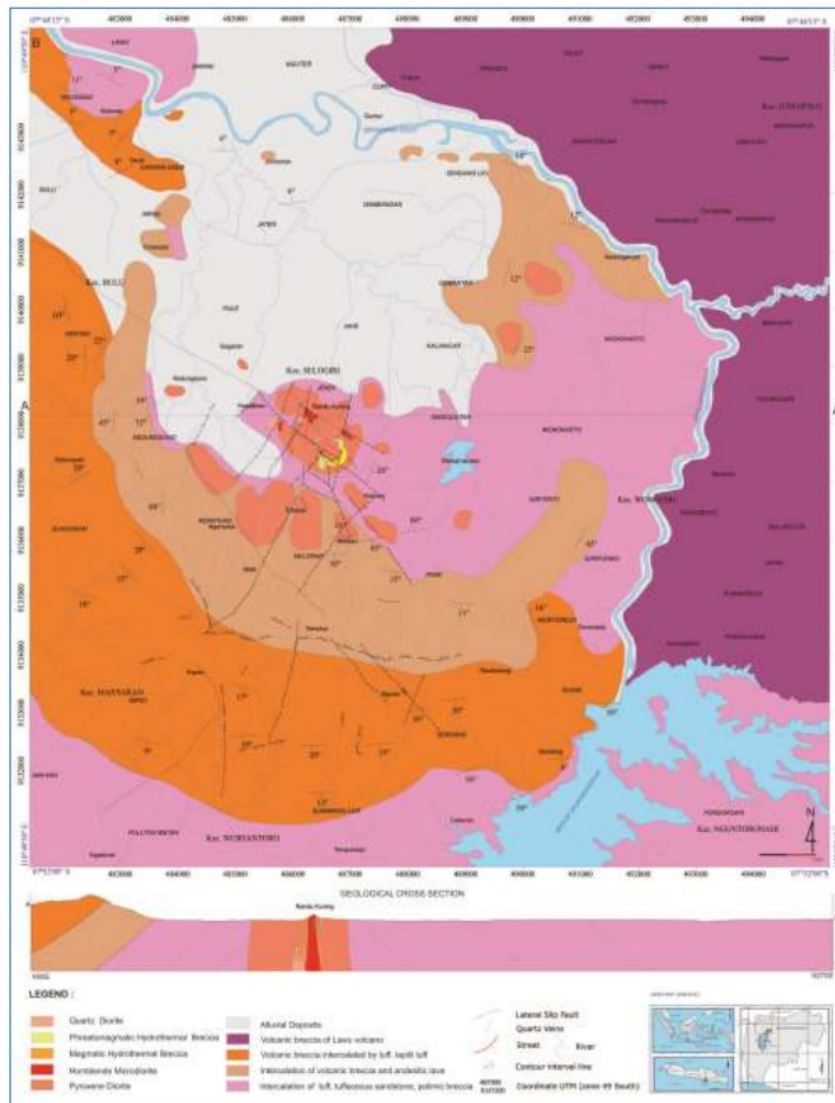


Fig.2. Geological Map of Selogiri area and its vicinity (Modified from Hartono, 2010 and Suasta and Sinugroho, 2011).



*Hornblende microdiorite:* Characterized by fine grained phenocrysts size (<1 mm), many of samples microscopically classified as andesite (porphyritic texture), commonly consist of about 30-45 percent of plagioclase and 5-14 percent of hornblende. The hornblende microdiorite is believed to be responsible for the extensive alteration and Cu-Au porphyry ore deposit in the study area. Physically, it seen darker in colour and finer in crystals size than pyroxene diorite. It is caused not only the amount of mafic minerals but also the abundant of the secondary magnetite. Most of the body was altered to potassic zone and lack of prophyllitic and phyllic alteration types.

*Quartz diorite:* This intrusive rock has the brightest colors and the coarsest crystals sizes (>2 mm), equigranular to weak porphyritic texture, characterized by the abundant of plagioclases (40-55 percent) and small quantities of quartzs (4-7 percent) and alkali feldspars (2-5 percent). Due to have coarse grained crystal size, Muthi *et al.* (2012) recognized and discribed the intrusive as coarse diorite. It was generally altered to phyllic-argillic and prophyllitic alteration type, associated with Au-base metals epithermal type mineralization. Dimensions and distribution of this intrusion relatively narrower and smaller than those of hornblende-pyroxene diorite and hornblende microdiorite intrusion.



Fig. 3. Hornblende-pyroxene diorite of the Tumbu and Geblag hill intruded by hornblende microdiorite of the Randu Kuning hill. Both hornblende-pyroxene diorite and hornblende microdiorite cut by quartz diorite intrusive. Photo was taken from Lancip hill (top) and some drilling core samples: hornblende-pyroxene diorite left (WDD 02-128.50), hornblende-pyroxene diorite right (WDD 29-80.55), hornblende microdiorite (WDD 45-31.20) and quartz diorite (WDD 18-161.70). (Sutarto *et al.*, 2013a)

*Magmatic hydrothermal breccia:* mostly occurred in contact between hornblende microdiorite or quartz diorite and hornblende-pyroxene diorite. It is characterized by angular fragments/clasts supported or infilled by silica and sulfide matrix derived from hydrothermal fluids precipitation. *Phreatomagmatic breccia:* this breccia is characterized by abundant of the juvenil clasts, indicated contact between hot magma with fluid or water. The juvenil clasts usually composed by volcanic glass, amorf and rounded-irregular shape. Phreatomagmatic breccia at the Randu Kuning area commonly intercalation with tuff and lapilli-tuff.

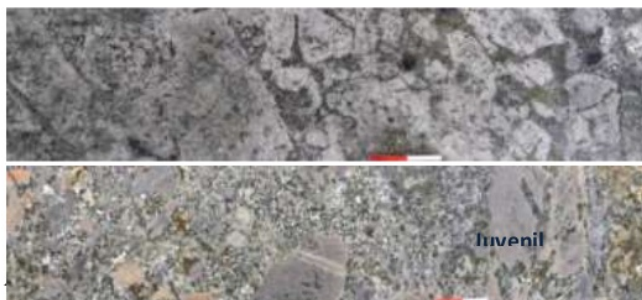


Fig.4. Magmatic hydrothermal jigsaw breccia infilled by magnetite-quartz-pyrite ( sample WDD 02-84.00, top). Phreatomagmatic breccia of drilling core sample of WDD 31-135.25 (bottom).



At least four types of hydrothermal alteration at the Randu Kuning area and its vicinity had identified, i.e. potassic, prophyllitic, argillic and phyllic types. Potassic alteration zone scattered on microdiorite intrusive rocks body and small part of pyroxene diorite intrusive rocks especially in contact to the microdiorite intrusion of Randu Kuning hill. This zone is characterized by secondary minerals assemblage i.e. one or both of secondary biotite and/or K-feldspar associated with magnetite (Suasta and Sinugroho, 2011; Corbett, 2011, 2012 and Muthi *et al.*, 2012). Prophyllitic alteration is less commonly recognised typically as actinolite or chlorite-epidote-magnetite alteration at the margin of the hydrothermal system (Corbett, 2012). Prophyllitic zone mostly is widespread in hornblende-pyroxene diorite and quartz diorite rocks, both visible at the surface outcrop and in drill core samples.

Phyllic alteration is commonly appear in the fault structure zones, locally overprint to the potassic alteration and prophyllitic zone, on hornblende-pyroxene diorite rocks, microdiorite hornblende as well as quartz diorite (Suasta and Sinugroho, 2011; Corbett, 2011, 2012 and Muthi *et al.*, 2012). This zone is characterized by retrograde silica-sericite-chlorite-pyrite assemblages, which is mostly limited to fault zones or selvages to late stage quartz-pyrite veins likened to D veins (Corbett, 2012). Argillic zone appears mainly adjacent to breccia and fault zone, especially in the epithermal prospect area, which is characterized by the present of clay minerals. Illite and monmorillonite are the main minerals identified in the vein samples suggesting structural controlled argillic alteration (Muthi *et al.*, 2012).

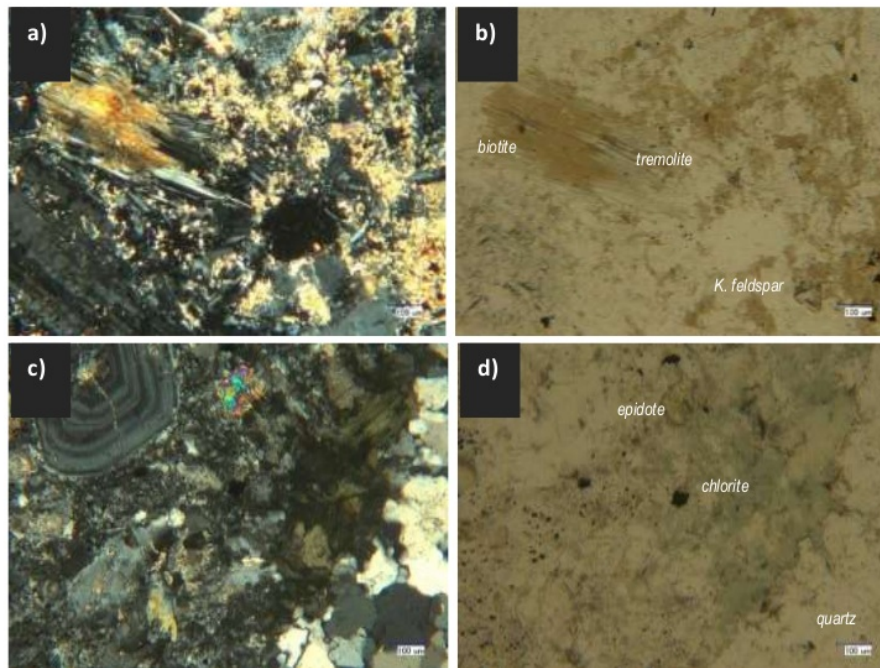


Fig. 5. Photomicroscopic of many altered rock type at the research area. Top : photomicroscopic is a potassic (biotite-alkaline feldspar) type, which is overprinted by inner prophyllitic (tremolite-chlorite-silica). a) cross plane, b) lower plane. Sample WDD-09-77.90. Bottom: Prophyllitic (chlorite-silica-epidote) altered microdiorite. c). cross plane, d). lower plane. Sample: WDD-30-291.85.(Sutarto, *et al.*, 2013b).

### Vein Type

An understanding of the veins and veinlets in the porphyry system is very important, especially in the Cu-Au porphyry deposit, as most of mineralization is associated with the presence of veins and veinlets. Various types of veins in porphyry-type ore deposit are summarized from several experts (Gustafson and Hunt, 1975; Corbett, 2008; Sutarto, 2010; Corbett, 2012) include EB type or EDM type, M type, A type, B type, AB type, C type and D type. A lot of vein types were observed at the Randu Kuning area, both porphyry vein and epithermal

vein types. Some of them are difficult to be grouped according to the classification of previous researchers above. Here are some vein types criterias that were found in the study area based on observations of drilling core samples and surface outcrops (using compilation of Gustafson and Hunt, 1975; Corbett, 2008; Sillitoe, 2010; Corbett, 2012). At least seven porphyry veins type have been observed, respectively from the earliest are:

1. **Magnetite-chalcopyrite±quartz-biotite veinlets**
  - Mostly occurred as a stringer veinlets
2. **Quartz±magnetite (A type)veins**
  - Comprising mostly saccharoidal and transparent quartz and minor or without magnetite
  - Associating only with potassic alteration zones
  - Vein shape commonly unsymmetry, irregular and discontinue
  - It is can be a single vein, pygmatic vein, stockwork linier vein, sheeted vein and stringer vein
  - Disseminated chalcopyrite rarely present
3. **Banded/Laminated quartz-magnetite (M type) veins**
  - Consist of magnetite and quartz with minor or without sulphide
  - Showing banded or laminated structure
4. **Quartz±K feldspar (B type)veins**
  - Characterized by centrally terminated comb structure quartz and/or feldspar in filled with lesser of fine sulphide. Some of them are not in filled by sulphide
  - At Randu Kuning area this vein type is rarely recognized
5. **Quartz with thin centre line sulphide (AB type) veins**
  - This vein types are formed by the filling at centra termination within A vein by sulphides (chalcopyrite-pyrite±bornite)
6. **Pyrite±chalcopyrite (C type) veinlets**
  - Comprising sulphide minerals (chalcopyrite-pyrite)
  - This veinlets generally narrow and there is no alteration selvages or halos
7. **Pyrite-quartz+chalcopyrite+carbonate (D type) veins**
  - Characterized by coarse euhedral pyrite, quartz and carbonate
  - Commonly followed by silica-sericite±pyrite selvages/halos
  - Associated with phyllic zone toward to prophyllitic zone

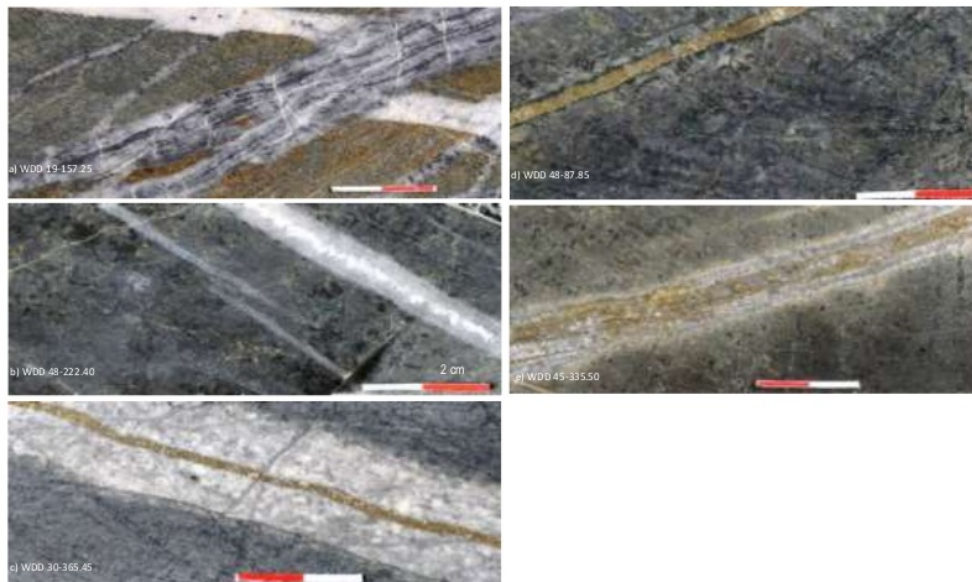


Fig. 6. Some Porphyry veins type at the Selogiri area (Sutarto, *et al.*, 2013 b).

- a) Quartz±magnetite vein cut by banded quartz-magnetite vein
- b) Quartz-K feldspar vein
- c) Quartz-feldspar vein infilled by pyrite vein in centre line
- d) Potassic alteration cut by pyrite vein
- e) Pyrite-quartz-chalcopyrite+carbonate vein



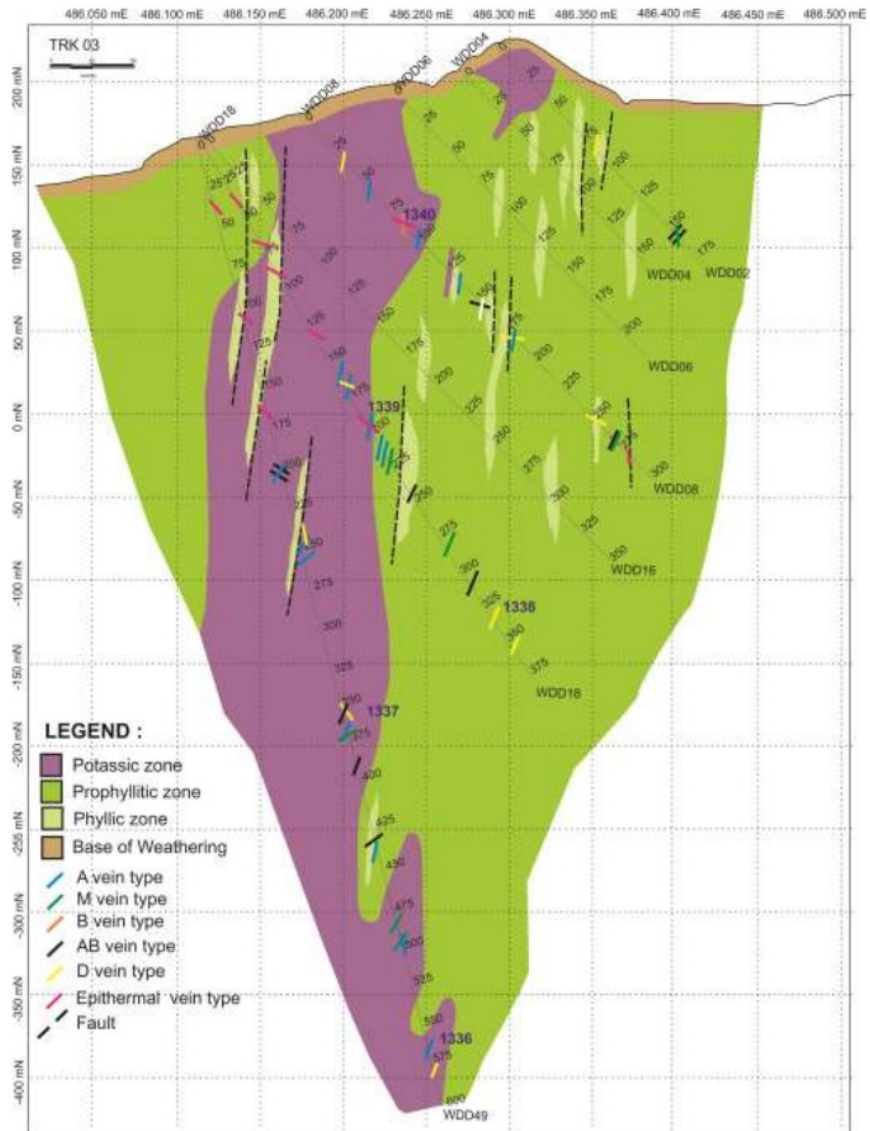


Fig.7. Many porphyry vein types and alteration zone of TRK 03 cross section

Based on the veins/veinlets observation data both field outcrops and drilling cores indicates, there are two ore mineralizing systems in the Randu Kuning hills. Those are porphyry Cu-Au system and low sulphidation epithermal Au system. But this paper will concern on the porphyry Cu-Au system only. The deposit is characterized by the domination of potassic alteration (biotite-K feldspar-magnetite minerals assemblage), propylitic alteration and phyllic alteration within fault zone associated with the formation of several porphyry veins style.

The quartz-magnetite veins with lesser of sulphide-feldspar and biotite including 1). Magnetite-chalcocopyrite ± quartz-biotite veinlets, 2). Quartz±magnetite (A type) veins, 3). Banded/laminated quartz-magnetite (M type) veins, 4). Quartz±K feldspar (B type) veins occurred on the early stage. Later veins formation were signified by the deposition of sulphides (pyrite-chalcocopyrite infilling the centre line of quartz-magnetite veins, such as 5). Quartz with thin centre line sulphide (AB type) veins, 6). Pyrite±chalcocopyrite (C type) veinlets, and 7). Pyrite-quartz±chalcocopyrite±carbonate (D type) veins.



Table 1. Paragenetic sequence of alteration minerals and veins of Randu Kuning porphyry Cu-Au mineralisation.

VEIN TYPES		1	A	M	AB	B	C	D	R
ALTERATION ZONES	Potassic								
	Prophyllitic								
	Phyllic								
	Argillic								
	Adv. Argillic?								
HYDROTHERMAL MINERAL ASSEMBLAGES	Biotite								
	KF								
	Quartz								
	Tremolite								
	Chlorite								
	Epidote								
	Albite								
	Calcite								
	Gypsum								
	Magnetite								
	Pyrite								
	Chalcopyrite								
	Bornite								
	sphalerite								
	Galena								
	Chalcocite								
	Sericite								
	Clay mineral								
	Hematite								

## Conclusions

A dioritic composition range of the intrusive rocks type and the domination of the potassic and prophyllitic zone in the study area, suggested that the alteration model of the Cu-Au porphyry ore deposit is more similar to the diorite model rather than the quartz monzonite model. Phyllic and argillic alteration type also present, but in a limited area, especially within the fault structure zones.

Many vein type which related to the formation of porphyry deposit have been identified, respectively from the earliest are Magnetite-chalcopyrite±quartz-biotite veinlets, Quartz±magnetite (A type) veins, Banded/laminated quartz-magnetite (M type) veins, Quartz±K feldspar (B type) veins, Quartz with thin centre line sulphide (AB type) veins, Pyrite±chalcopyrite (C type) veinlets, and Pyrite-quartz+chalcopyrite+carbonate (D type) veins.

## Acknowledgements

My sincere thanks go to the management of Augur Resources, which has given us permission to do this research in the Selogiri prospect area and its vicinity.

## References

- Bemmellen, van, R.W, 1949, The Geology of Indonesia, and Adjacent Archipelagoes, Vol. IA, Gov. Print. Office, Martinus Nijhoff, the Hague.
- Carlile, J.C. dan Mitchell, A.H.G., 1994, Magmatic Arcs and Associated Gold and Copper Mineralisation in Indonesia, Journal of Geochemical Exploration, Elsevier Science, Amsterdam, 50: 92-142.
- Corbett, G., 2011, Comments on The Exploration Potential of The Wonogiri Porphyry Cu-Au Project, Central Java, Indonesia, *Corbett Geological Services Pty. Ltd., Unpublished*, 27 p.
- Corbett, G., 2012, Further Comments on The Wonogiri Porphyry Cu-Au Project Central Java, Indonesia, *Corbett Geological Services Pty. Ltd., Unpublished*, 37 p.
- Corbett, G., and Leach, T.M.,1996, Southwest Pacific Rim Gold Copper Systems: Structure, Alteration, and Mineralization, Workshop Manual for Exploration Workshop presented at Jakarta August 1996, 186 p.
- Gustafson, L.B. dan Hunt, J.P. 1975, The Porphyry Copper Deposit at El Salvador, Chile, *Economic Geology*, v 70:pp. 857-912.

- Hartono, G., 2010, The Role of Paleovolcanism in The Tertiary Volcanic Rock Product Setting at Gajahmungkur Mt., Wonogiri, Central Java, *Dissertatio in UNPAD, Unpublished*, 190 p.
- Idrus, A., 2008, Transport and Deposition of Copper and Gold in Porphyry Deposit: A Constraint From Microthermometry and Hydrothermal Biotite Chemistry, *Media Teknik* No.3 Tahun XXX Edisi Agustus 2008 ISSN 0216-3012 p.276-283.
- Imai, A., Shinomiya, J., Soe, M.T., Setijadji, L.D., Watanabe, K., and Warmada, I.W., 2007, Porphyry-Type Mineralization at Selogiri Area, Wonogiri Regency, Central Java, Indonesia, *Resources Geology*, vol.57, no. 2:230-240.
- Isnawan, D., Sukandarrumidi and Sudarno, I., 2002, Kontrol Struktur Geologi Terhadap Jebakan Tembaga Sebagai Arah Eksploitasi di Daerah Ngerjo dan Sekitarnya Kecamatan Tirtomoyo, Kabupaten Wonogiri Propinsi Jawa Tengah, *Gama Sains IV* (2) Juli 2002, p.149-157.
- Katili, J. A., 1989, Evolution of the Southeast Asian arc complex, *Geol. Indon.* Jakarta, 12: 113-143.
- Leeuwen, van, T.M., 1994, 25 Years of Mineral Exploration and Discovery in Indonesia, *Jornal of Geochemical Exploration*, Elsevier Science, Amsterdam, 50: 13-89.
- Maryono, A., Setijadji, L.D., Arif, J., Harrison, R., Soeriaatmadja, E., 2012, Gold, Silver and Copper Metallogeny of the Eastern Sunda Magmatic Arc Indonesia, *Proceeding of Banda and Eastern Sunda Arcs 2012 MGEI Annual Convention*, 26-27 November 2012, Malang, East Java, Indonesia, p.23-38.
- Muthi, A., Basten, I.G., Suasta, I.G.M., and Litaay, N.E.W., 2012, Characteristic of Alteration and Mineralization at Randu Kuning-Wonogiri Project, *Proceeding of Banda and Eastern Sunda Arcs 2012 MGEI Annual Convention*, 26-27 November 2012, Malang, East Java, Indonesia, p. 117-132.
- Pirajno F., 1992, *Hydrothermal Mineral deposits, Principles and Fundamental Concepts for the Exploration Geologist*, Springer-Verlag, Berlin, Heidelberg, New York, London, Paris, 709 p.
- Pirajno, F., 2009, *Hydrothermal Processes and Mineral Systems*, Springer-Geological Survey of Western Australia, 1250 p.
- Setijadji, L.D., Kajino, S., Imai, A., and Watanabe, K., 2006, Cenozoic Island Arc Magmatism in Java Island (Sunda Arc, Indonesia): Clues on Relationships between Geodynamics of Volcanic Centers and Ore Mineralization, *Resources Geology*, vol.56, no.3,267-292.
- Sillitoe, R.H., 2010, Porphyry Copper System, *Economic Geology* v.105, pp.3-41, 2010.
- Smyth, H.L., Hall, R. and Nichols, G., 2008, Cenozoic Volcanic Arch History of East Java Indonesia: The Stratigraphic Record of Eruption on An Active Continental Margin, *The Geological Society of America Special Paper* No. 436, p. 199-221.
- Soeria-Atmadja, R., Maury,R.C., Bellon,H., Pringgoprawiro,H., Polvé,M., and Priadi,B., 1991, The Tertiary Magmatic Belt in Java, *Proceeding of the Silver Jubilee Symposium On the Dynamics of Subduction and Its Products*, Yogyakarta: p. 98-121.
- Soeria-Atmadja, R., Maury,R.C., Bellon,H., Pringgoprawiro,H., Polvé,M., and Priadi,B., 1993, Tertiary Magmatic Belt in Java, *Journal of Southeast Asian Earth Science*, 9, 13-27.
- Suasta, I.G.M and Sinugroho, I.A., 2011, Occurrence of Zoned Epithermal to Porphyry Type Cu-Au Mineralization at Wonogiri, Central Java, *Proceeding of The 36th HAGI and 40th IAGI Annual Convention*.
- Surono, Toha, B., and Sudarno, I., 1992, Geological map of the Surakarta-Giritontro Quadrangles, Java, Geological Research and Development Centre, Bandung.
- Sutanto, Soeria-Atmadja, R., Maury,R.C., and Bellon,H., 1994, Geochronology of Tertiary Volcanism in Java, *Prosiding Seminar Geologi dan Geotektonik Pulau Jawa Sejak Akhir Mesozoik Hingga Kuartar*, Jurusan Teknik Geologi, Universitas Gajahmada, Yogyakarta, p.53-56.
- Sutarto, Idrus, A., Putranto, S., Harjoko, A., Setijadji, L.D., Meyer, M., and Danny, R., 2013, Magmatism and Porphyry Cu-Au Mineralisation at The Randu Kuning Prospect, Selogiri Area, Central Java. *Prosiding Seminar Kebumihan VIII FTM UPN "Veteran" Yogyakarta*.
- Sutarto, Idrus, A., Putranto, S., Harijoko,A., Setijadji,L.D., Meyer, F.M, and Danny, R. 2013, Veining Paragenetic Sequence of The Randu Kuning Porphyry Cu-Au Deposit at Selogiri Area, Central Java. *Extended Abstract: CD Proceeding of The 38th HAGI and 42nd IAGI Annual Convention and Exhibition Medan*, 28-31 October 2013.
- Sutarto, Idrus,A., Meyer, M., Harijoko,A., Setijadji,L.D., , and Danny, R. 2013, The Dioritic Alteraation Model of The Randu Kuning Porphyry Cu-Au, Selogiri Area, Central Java. *Proceedings International Conference on Georesources and Geological Engineering, December 11-12, 2013 Yogyakarta*, ISBN 978-602-14066-5-6. p.122-132.
- Prihatmoko, S., Digidowirogo, S., and Kusumanto, D., 2002, Potensi Cebakan Mineral di Jawa Tengah dan Daerah Istimewa Yogyakarta. *Prosiding Seminar Geologi Jawa Tengah dan Daerah Istimewa Yogyakarta*, Ikatan Ahli Geologi Indonesia Pengda Yogyakarta, p. 87-108.

# HYDROTHERMAL ALTERATION AND VEIN TYPES OF THE RANDU KUNING PORPHYRY CU-AU DEPOSIT AT SELOGIRI AREA, WONOGIRI

---

## ORIGINALITY REPORT

---

8%

SIMILARITY INDEX

%

INTERNET SOURCES

%

PUBLICATIONS

%

STUDENT PAPERS

---

## MATCH ALL SOURCES (ONLY SELECTED SOURCE PRINTED)

---

12%

★ [garuda.ristekbrin.go.id](http://garuda.ristekbrin.go.id)

Internet Source

---

Exclude quotes  On

Exclude bibliography  On

Exclude matches  < 5%