

Reaktor

Jurnal Teknik Kimia
Chemical Engineering Journal

P-ISSN. 0852-0798
E-ISSN. 2407-5973

Terakreditasi No.66b/DIKTI/Kep/2011

USER

Username

Password

Remember me

JOURNAL CONTENT

Search

All

Browse

- [By Issue](#)
- [By Author](#)
- [By Title](#)
- [Other Journals](#)

HOME ABOUT LOG IN REGISTER
SEARCH CURRENT ARCHIVES
ANNOUNCEMENTS EDITORIAL BOARD
AUTHOR GUIDELINES ONLINE SUBMISSIONS
PUBLICATION ETHICS ARTICLE PROCESSING
FEE PROFILE INDEXING

Home > Archives > **Volume 14, Nomor 2, Oktober 2012**

Volume 14, Nomor 2, Oktober 2012

Table of Contents

Research Article

MODEL PERPINDAHAN MASSA PADA EKSTRAKSI SAPONIN BIJI TEH DENGAN PELARUT ISOPROPILOKOHOL 50% DENGAN PENGONTAKAN SECARA DISPERSI MENGGUNAKAN ANALISIS DIMENSI	Abstract PDF
DOI: 10.14710/reaktor.14.2.87-94 <i>Susiana Prasetyo, Felicia Yosephine</i>	87-94
DYNAMIC SIMULATION AND COMPOSITION CONTROL IN A 10 L MIXING TANK	Abstract PDF
DOI: 10.14710/reaktor.14.2.95-100 <i>Yulius Dedy Hermawan, Gogot Haryono</i>	95-100
KINETIKA REAKSI PADA PROSES PRODUKSI DIETIL ETER DARI ETANOL DENGAN KATALIS H-ZEOLIT	Abstract PDF
DOI: 10.14710/reaktor.14.2.101-108 <i>Widayat Widayat, Achmad Roesyadi, Muhammad Rachimoallah</i>	101-108
PENENTUAN ANGKA OKTANA BAHAN BAKAR KOMERSIAL DENGAN MENGGUNAKAN MODEL KINETIKA OKSIDASI DAN PEMBAKARAN HIDROKARBON MULTIKOMPONEN	Abstract PDF
DOI: 10.14710/reaktor.14.2.109-117 <i>Yuswan Muharam, Chandra Hadiwijaya, Jacquin Suryadi</i>	109-117
SINTESA GULA DARI SAMPAH ORGANIK DENGAN PROSES HIDROLISIS MENGGUNAKAN KATALIS ASAM	Abstract PDF
DOI: 10.14710/reaktor.14.2.118-122 <i>Dedy Irawan, Zainal Arifin</i>	118-122
TRANSESTERIFICATION OF VEGETABLES	Abstract PDF

NOTIFICATIONS

- [View](#)
- [Subscribe / Unsubscribe](#)

[Journal Help](#)

KEYWORDS

[CPO adsorpsi](#)
[ekstraksi extraction](#)
[jagung](#) [karakterisasi](#)
[karakteristik karbon](#)
[nanotube](#) [kinetika](#)
[kitosan](#) [mixed](#)
[adsorption drying](#)
[model kinetika](#) [palm](#)
[kernel oil](#)
[pengeringan](#)
[perpindahan massa](#)
[pirolisis](#) [polyol](#)
[solubility](#) [soxhlet](#)
[supercritical](#) [zeolit](#)

[OIL USING SUBAND SUPERCRITICAL METHANOL](#)

DOI: 10.14710/reaktor.14.2.123-128
Nyoman Puspa Asri, Siti Machmudah, Wahyudiono Wahyudiono, Suprpto Suprpto, Kusno Budikarjono, Achmad Roesyadi, Mitsuru Sasaki, Motonobu Goto 123-128

[APPLICATION OF PHYTOREMEDIATION FOR HERBAL MEDICINE WASTE AND ITS UTILIZATION FOR PROTEIN PRODUCTION](#) [Abstract](#) [PDF](#)

DOI: 10.14710/reaktor.14.2.129-134
Danny Soetrisnanto, Marcelinus Christwardana, Hadiyanto Hadiyanto 129-134

[THE DETERMINATION OF SALINITY AND NUTRITION \(NaH₂PO₄\) PROFILE IN Nannochloropsis oculata CULTIVATION TO GAIN MAXIMUM LIPID](#) [Abstract](#) [PDF](#)

DOI: 10.14710/reaktor.14.2.135-142
Elida Purba, Kenjiro Siburian 135-142

[PENINGKATAN KECERAHAN PADA PROSES SINTESIS SURFAKTAN NONIONIK ALKIL POLIGLIKOSIDA \(APG\) BERBASIS TAPIOKA DAN DODEKANOL](#) [Abstract](#) [PDF](#)

DOI: 10.14710/reaktor.14.2.143-150
Febuadi Bastian, Ani Suryani, Titi Candra Sunarti 143-150

[PENGARUH PERBEDAAN SIFAT PENYANGGA ALUMINA TERHADAP SIFAT KATALIS HYDROTREATING BERBASIS NIKEL-MOLIBDENUM](#) [Abstract](#) [PDF](#)

DOI: 10.14710/reaktor.14.2.151-157
Maria Ulfah, Subagjo Subagjo 151-157

[KARAKTERISASI FILM KOMPOSIT ALGINAT DAN KITOSAN](#) [Abstract](#) [PDF](#)

DOI: 10.14710/reaktor.14.2.158-164
Nur Rokhati, Bambang Pramudono, Nyoman Widiasa, Heru Susanto 158-164

[OPTIMASI PRODUKSI METIL ESTER SULFONAT DARI METIL ESTER MINYAK JELANTAH](#) [Abstract](#) [PDF](#)

DOI: 10.14710/reaktor.14.2.165-172
Sri Hidayati, Natalia Gultom, Hestuti Eni 165-172



Reaktor by [Department of Chemical Engineering](#) is licensed under a [Creative Commons Attribution-NonCommercial 4.0 International License](#).

Based on a work at <http://ejournal.undip.ac.id/index.php/reaktor>.

E mail: j.reaktor@che.undip.ac.id

Indexing:



00021455 [View My Stats](#)

Reaktor

Jurnal Teknik Kimia

Chemical Engineering Journal

P-ISSN. 0852-0798

E-ISSN. 2407-5973

Terakreditasi No.66b/DIKTI/Kep/2011

USERUsername Password Remember me**JOURNAL CONTENT****Search**

All

Browse

- [By Issue](#)
- [By Author](#)
- [By Title](#)
- [Other Journals](#)

HOME ABOUT LOG IN REGISTER
 SEARCH CURRENT ARCHIVES
 ANNOUNCEMENTS EDITORIAL BOARD
 AUTHOR GUIDELINES ONLINE
 SUBMISSIONS PUBLICATION ETHICS
 ARTICLE PROCESSING FEE PROFILE
 INDEXING

Home > **Editorial Boards**

Editorial Boards

Chief of Editor

Dr Widayat Widayat, ([Scopus ID: 36715625400](#) H-index 2) Department of Chemical Engineering Faculty of Engineering Diponegoro University Semarang, Indonesia

Editorial Board

Prof. Dr. Ir. Bakti Jos, DEA, ([Scopus ID: 6504829936](#) H-index1) Department of Chemical Engineering Faculty of Engineering Diponegoro University Semarang Indonesia

Prof. Dr. Ir. Bambang Pramudono, MS, ([Google Scholar H-index=3](#)) Department of Chemical Engineering Faculty of Engineering Diponegoro University Semarang Indonesia

Dr Made Tri Ari Penia Kresnowati, ([Scopus ID ID: 8639247200](#) H-index 8) Department of Chemical Engineering, Bandung Institute of Technology (ITB), Indonesia

Dr. Dyah Hesti Wardhani, ([Scopus ID 24075014500](#) H-index: 4) Department of Chemical Engineering Faculty of Engineering Diponegoro University Semarang Indonesia

Dr. Nita Aryanti, ([Scopus ID 25639393400](#) H-index: 7) Department of Chemical Engineering Faculty of Engineering Diponegoro University Semarang Indonesia

Dr. Andri Cahyo Kumoro, ([Scopus ID: 22980375000](#) H-index 5) Department of Chemical Engineering Faculty of Engineering Diponegoro University Semarang Indonesia

Dr. Suryadi Ismadji ([Scopus ID 10039423500](#) H-index=25), Department of Chemical Engineering, Widya Mandala Surabaya Catholic University, Kalijudan 37, Surabaya 60114 Indonesia, Indonesia

Dr. Muhammad Dani Supardan ([Scopus ID: 6506563268](#) H-index 3) Department of Chemical Engineering University of Syiah Kuala

NOTIFICATIONS

- [View](#)
- [Subscribe / Unsubscribe](#)

[Journal Help](#)**KEYWORDS**

[CPO adsorpsi](#)
[ekstraksi](#) [extraction](#)
[jagung](#)
[karakterisasi](#)
[karakteristik](#) [karbon](#)
[nanotube](#) [kinetika](#)
[kitosan](#) [mixed](#)
[adsorption](#) [drying](#)
[model](#) [kinetika](#) [palm](#)
[kernel](#) [oil](#)
[pengeringan](#)
[perpindahan](#) [massa](#)
[pirolisis](#) [polyol](#)
[solubility](#) [soxhlet](#)
[supercritical](#) [zeolit](#)

Layout Editor (Redaksi Pelaksana)

Dr Silvana Silvana, Department of Chemical Engineering
Diponegoro University, Indonesia

Luqman Buchori, ST.,MT ([Scopus ID 55559743300](#) H-index
=1) Department of Chemical Engineering Diponegoro
University, Indonesia

Ir. Nur Rokhati, MT Department of Chemical Engineering
Diponegoro University, Indonesia

Noer Abyor Handayani MT, Department of Chemical
Engineering Faculty of Engineering Diponegoro University,
Indonesia



Reaktor by [Department of Chemical Engineering](#) is licensed
under a [Creative Commons Attribution-NonCommercial 4.0
International License](#).

Based on a work at <http://ejournal.undip.ac.id/index.php/reaktor>.

E mail: j.reaktor@che.undip.ac.id

Indexing:

00021456 [View My Stats](#)

Reaktor

Jurnal Teknik Kimia
Chemical Engineering Journal

P-ISSN. 0852-0798
E-ISSN. 2407-5973

Terakreditasi No.66b/DIKTI/Kep/2011

USER

Username
Password
 Remember me

JOURNAL CONTENT

Search

All

Browse

- [By Issue](#)
- [By Author](#)
- [By Title](#)
- [Other Journals](#)

HOME ABOUT LOG IN REGISTER
SEARCH CURRENT ARCHIVES
ANNOUNCEMENTS EDITORIAL BOARD
AUTHOR GUIDELINES ONLINE
SUBMISSIONS PUBLICATION ETHICS
ARTICLE PROCESSING FEE PROFILE
INDEXING

Home > **Indexing**

Indexing

Jurnal Reaktor telah terindeks oleh:

- [Indonesia Citation Index](#)
- [Google Scholar](#)
- [Portal Garuda](#)
- [Eprint UNDIP](#)
- [Openaccessarticles](#)
- [Citeulike](#)
- [Research Bible](#)
- [Index Copernicus](#)
- [Alsafira](#)
- [DOAJ](#)
- [DAIJ \(Directory of Abstract Indexing Journal\)](#)
- [OAJI \(Open Academic Journal Index\)](#)
- [EBSCO](#)
- [EZB Nutzeranfragen](#)
- [World Cat](#)
- [EyeSource](#)
- [SHERPA/RoMEO](#)
- [Crossref Metadata Search](#)

NOTIFICATIONS

- [View](#)
- [Subscribe / Unsubscribe](#)

[Journal Help](#)

KEYWORDS

[CPO adsorpsi](#)
[ekstraksi](#) [extraction](#)
[jagung](#)
[karakterisasi](#)
[karakteristik](#) [karbon](#)
[nanotube](#) [kinetika](#)
[kitosan](#) [mixed](#)
[adsorption](#) [drying](#)
[model](#) [kinetika](#) [palm](#)
[kernel](#) [oil](#)
[pengeringan](#)
[perpindahan](#) [massa](#)
[pirolisis](#) [polyol](#)
[solubility](#) [soxhlet](#)
[supercritical](#) [zeolit](#)



Reaktor by [Department of Chemical Engineering](#) is licensed under a [Creative Commons Attribution-NonCommercial 4.0 International License](#).

Based on a work at <http://ejournal.undip.ac.id/index.php/reaktor>.

E mail: j.reaktor@che.undip.ac.id

Indexing:





00021456 [View My Stats](#)

DYNAMIC SIMULATION AND COMPOSITION CONTROL IN A 10 L MIXING TANK

Yulius Deddy Hermawan^{*)} and Gogot Haryono

Chemical Engineering Department, Faculty of Industrial Technology, UPN "Veteran" Yogyakarta
Jl. SWK 104 (Lingkar Utara), Condongcatur, Yogyakarta

^{*)}Corresponding author: ydhermawan@upnyk.ac.id

Abstract

The open loop experiment of composition dynamic in a 10 L mixing tank has been successfully done in laboratory. A 10 L tank was designed for mixing of water (as a stream-1) and salt solution (as a stream-2 with salt concentration, c_2 constant). An electric stirrer was employed to obtain uniform composition in tank. In order to keep the liquid volume constant, the system was designed overflow. In this work, 2 composition control configurations have been proposed; they are Alternative-1 and Alternative-2. For Alternative-1, the volumetric-rate of stream-1 was chosen as a manipulated variable, while the volumetric-rate of stream-2 was chosen as a manipulated variable for Alternative-2. The composition control parameters for both alternatives have been tuned experimentally. The volumetric-rate of manipulated variable was changed based on step function. The outlet stream's composition response (c_3) to a change in the input volumetric-rate has been investigated. This experiment gave Proportional Integral Derivative (PID) control parameters. The gain controllers K_c [$\text{cm}^6/(\text{gr}\cdot\text{sec})$] for Alternative-1 and Alternative-2 are -34200 and 40459 respectively. Integral time constant (τ_i) and Derivative time constant (τ_D) for both alternatives are the same, i.e. $\tau_i = 16$ second, and $\tau_D = 4$ second. Furthermore, closed loop dynamic simulation using computer programming was also done to evaluate the resulted tuning parameters. The developed mathematical model of composition control system in a mixing tank was solved numerically. Such mathematical model was rigorously examined in Scilab software environment. The results showed that closed loop responses in PID control were faster than those in P and PI controls.

Keywords: closed loop; mixing tank; open loop; pid control; step function

Abstrak

DINAMIKA SIMULASI DAN PENGENDALIAN KOMPOSISI DALAM TANGKI PENCAMPUR BERKAPASITAS 10 L. Percobaan loop terbuka dinamika komposisi dalam tangki pencampur 10 L telah dilaksanakan di laboratorium. Tangki 10 L dirancang untuk proses pencampuran air (sebagai arus-1) dan larutan garam (sebagai arus-2 dengan konsentrasi garam, c_2 konstan). Pengadukan diterapkan untuk mencapai keseragaman komposisi di dalam tangki. Untuk menjaga volume cairan di dalam tangki konstan, sistem dirancang overflow. Penelitian ini mengusulkan 2 konfigurasi pengendalian komposisi, yaitu Alternatif-1 dan Alternatif-2. Untuk Alternatif-1, laju alir volumetrik arus-1 dipilih sebagai variabel yang dimanipulasi (MV), sedangkan arus-2 dipilih sebagai MV untuk Alternatif-2. Parameter-parameter pengendalian komposisi untuk kedua alternatif ditentukan melalui percobaan. Laju alir volumetrik dari MV diubah mengikuti fungsi tahap. Percobaan dilanjutkan dengan pengamatan respons komposisi keluaran tangki (c_3) terhadap perubahan input fungsi tahap. Percobaan ini menghasilkan parameter pengendalian PID (Proportional Integral Derivative). Gain pengendali K_c [$\text{cm}^6/(\text{gr}\cdot\text{sec})$] untuk Alternatif-1 dan Alternatif-2 berturut-turut adalah -34200 dan 40459. Konstanta waktu integral (τ_i) dan konstanta waktu derivative (τ_D) untuk kedua alternatif adalah sama, yaitu $\tau_i = 16$ detik, and $\tau_D = 4$ detik. Kemudian, simulasi loop tertutup menggunakan pemrograman komputer dilaksanakan untuk mengevaluasi parameter pengendalian PID yang dihasilkan. Model matematika sistem pengendalian komposisi dalam tangki pencampur diselesaikan secara numerik dan diuji menggunakan software Scilab. Hasil simulasi menunjukkan bahwa respons loop tertutup pengendalian PID lebih cepat dibandingkan respons pengendalian P dan PI.

Kata kunci: loop tertutup; tangki pencampur; loop terbuka; pengendalian pid; fungsi tahap

INTRODUCTION

A mixing tank is frequently used in chemical process industries, for examples as a blending tank and/or a continuous stirred tank reactor. Liquid composition in a mixing tank is one of important parameters for mixing processes or chemical reaction processes in reactor. The propagation of mass disturbance is possibly occurred in mixing processes. Therefore composition control should be implemented to overcome the propagation of mass disturbances.

Composition control parameters such as proportional gain controller (K_c), integral time constant (τ_I), and derivative time constant (τ_D) should be tuned properly, since they potentially affect the stability of mixing process. However, designed composition control system must be able to give a stable response in facing the mass disturbances. Therefore the study on the dynamic simulation and composition control is very important.

Some studies on process dynamic and control have been done previously. Recently, Hermawan *et al.* (2012) have presented the open loop composition dynamic in a 10 L Mixing Tank experimentally. Hermawan *et al.* (2010) have also presented the design of control configuration of non-interacting-tank system using quantitative analysis of relative gain array. Hermawan (2011) has implemented Process Reaction Curve (PRC) for tuning of temperature control parameters in a 10 L Stirred Tank Heater. Widayati and Hermawan (2007) have studied the mixing characteristic in a horizontal stirred tank.

The goals of this research were to propose the composition control configuration and to tune the composition control parameters (PID Control parameters) in a 10 L Mixing Tank. The resulted composition control parameters of proposed configurations were then examined through dynamic simulation. In order to achieve the aims of this research, this work was done in two parts, i.e. open

loop experiment in the laboratory for tuning of composition control parameters and closed loop simulation using computer programming to explore dynamic behavior of the controlled system. The open loop experiment in the laboratory was carried out to tune composition control parameters. The volumetric rate of input stream was chosen as a manipulated variable to maintain the concentration of output stream at a constant value. In order to examine the control configuration, the mass disturbances were made based on step function. The Scilab software was utilized to carry out dynamic simulation.

MATERIALS AND METHODS

The experimental apparatus setup is shown in Figure 1. As can be seen in Figure 1, No.1 is a main tank that represents a mixing tank. This mixing tank has 2 input streams, i.e. stream-1 and stream-2, and an output stream, i.e. stream-3. In normal condition, stream-1 and stream-2 come from the feeding tank No. 2 and No. 3, respectively. In this work, water was used as a stream-1 with its volumetric rate f_1 [cm³/sec], and salt solution as a stream-2 with its volumetric rate f_2 [cm³/sec] and concentration c_2 [gr/cm³]. The input concentration c_2 is constant. The output stream (stream-3) has volumetric rate f_3 [cm³/sec] and concentration c_3 [gr/cm³]. The concentration c_3 is measured by means of Conductivity-meter. Since the liquid volume is kept constant, the system is designed overflow. A stirrer is employed to obtain uniform composition in the mixing tank. Tank No.4 was used if we want to make a concentration disturbance of stream-2. This disturbance could be made by changing the inlet concentration of stream-2 c_2 immediately. This is done by revolving the gate of three-way-valve (No. 7 in Figure 1), so that stream-2 comes from the tank No. 4 which is specifically prepared for making disturbance.

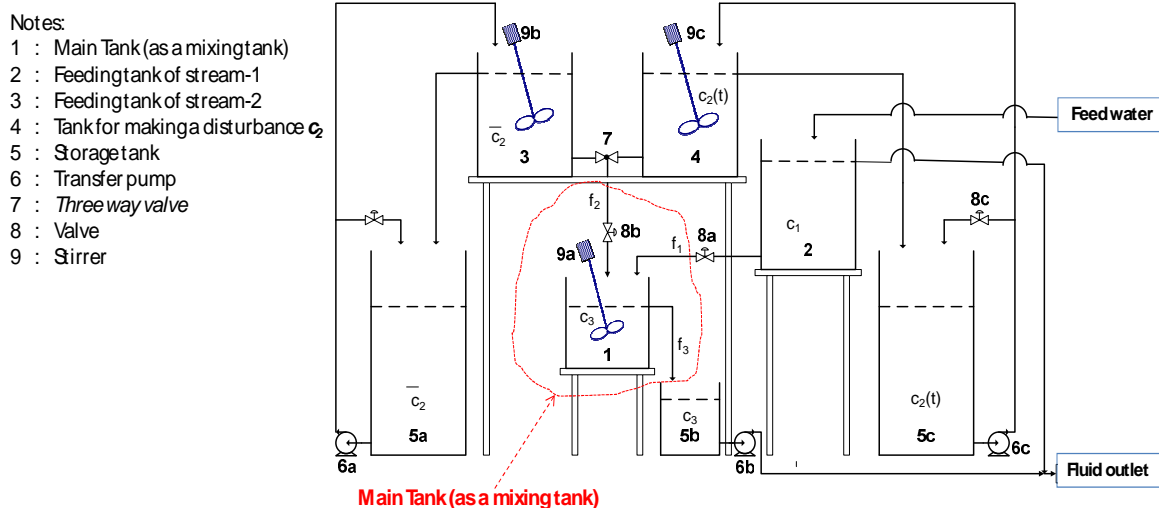


Figure 1. The experimental apparatus setup

The material balance of the mixing tank can be written as follows:

$$\frac{dc_3(t)}{dt} = [f_1(t)\bar{c}_1 + f_2(t)\bar{c}_2 - (f_1(t) + f_2(t))c_3(t)]/V \quad (1)$$

In this research, two composition control configurations are proposed, i.e. Alternative-1 and Alternative-2 as shown in Figure 2. Open loop tuning experiment is done for either alternatives by changing the opening valve of stream-1 (No. 8a in Figure 1) or stream-2 (No. 8b in Figure 1) to increase/decrease its volumetric rate immediately. The output concentration (c_3) response to a change in input volumetric rate was then investigated. The resulted response will similar with that response given by first order plus dead time (FOPDT) model. PID Control parameters were then tuned by fitting the resulted FOPDT as proposed by Ziegler-Nichols (Smith and Corripio, 1997). These open loop experiments should be started from its initial (normal) conditions.

In order to evaluate the resulted PID Control parameters, dynamic simulation was carried out by means of a computer. A simple feedback control system was implemented to maintain liquid concentration in tank (c_3) constant by manipulating the volumetric rate of stream-1 or stream-2. Thus, the equation of manipulated variables for both of control configuration alternatives can be written as follow:

Alternative-1:

$$f_1(t) = \bar{f}_1 + K_c e(t) + \frac{K_c}{\tau_i} \int e(t) dt + K_c \tau_d \frac{de(t)}{dt} \quad (2)$$

Alternative-2:

$$f_2(t) = \bar{f}_2 + K_c e(t) + \frac{K_c}{\tau_i} \int e(t) dt + K_c \tau_d \frac{de(t)}{dt} \quad (3)$$

Where $e(t)$ is defined as:

$$e(t) = c_3^{SP} - c_3(t) = \text{error} \quad (4)$$

The developed mathematical model of composition control system in the mixing tank was solved numerically with the easiest way, that was Explicit Euler. The free software Scilab was chosen to carry out the closed loop dynamic simulation. The closed loop responses of composition control could then be explored in this work.

RESULTS AND DISCUSSION

Steady state parameters of the mixing tank are listed in Table 1. Based on steady state material balance, the process time constant is found to be 37 seconds (0.6 minutes). Therefore the system is considered quite sensitive to the changes of input disturbances.

Tuning of Composition Control Parameters for Alternative-1

For Alternative-1, volumetric rate of water (f_1) is considered as a manipulated variable to maintain liquid composition in tank (c_3). Figure 3.a shows the influence of f_1 on c_3 . Volumetric rate of water decreases by an amount of $76 \text{ cm}^3/\text{sec}$ immediately; the concentration c_3 rises about $0.01 \text{ gr}/\text{cm}^3$. The tuning results of composition control parameters (P, PI, and PID) for Alternative-1 are listed in Table 2.

Tuning of Composition Control Parameters for Alternative-2

For Alternative-2, volumetric rate of salt solution (f_2) is considered as a manipulated variable to maintain liquid composition in tank (c_3). Figure 3.b shows the open loop composition response to a change in the volumetric rate f_2 . The concentration c_3 increases (about $0.01 \text{ gr}/\text{cm}^3$) as the volumetric rate f_2 increases (about $70 \text{ cm}^3/\text{sec}$). The tuning results of composition control parameters (P, PI, and PID) for Alternative-2 are also listed in Table 2.

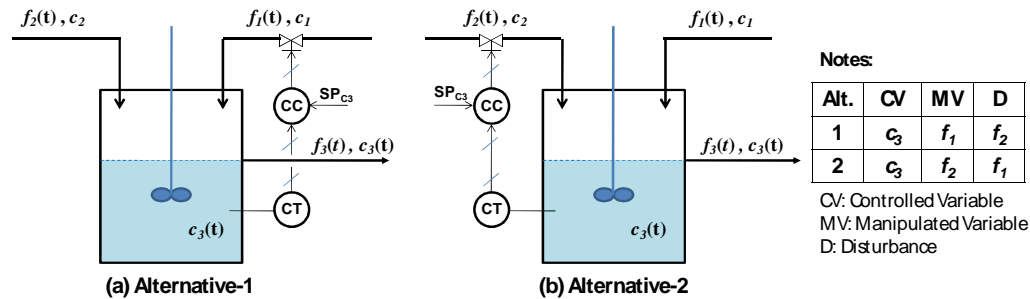


Figure 2. Composition Control Configuration: (a) Alternative-1, (b) Alternative-2.

Table 1. Steady state parameters

No	Variable	Steady state
1	Volumetric rate of stream-1, f_1 ($\text{cm}^3/\text{second}$)	106
2	Volumetric rate of stream-2, f_2 ($\text{cm}^3/\text{second}$)	71
3	Volumetric rate of stream-3, f_3 ($\text{cm}^3/\text{second}$)	177
4	Concentration of stream-1, c_1 (gr/cm^3)	0
5	Concentration of stream-2, c_2 (gr/cm^3)	0.05
6	Concentration of stream-3, c_3 (gr/cm^3)	0.0214
7	Liquid volume in tank, V (cm^3)	6600

Table 2. Tuning results of composition control parameters

Type of Feedback Control	Proportional Gain K_c [$\text{cm}^6/(\text{gr}.\text{sec})$]			Integral time τ_I [sec]			Derivative time τ_D [sec]		
	K_c	Alt-1	Alt-2	τ_I	Alt-1	Alt-2	τ_D	Alt-1	Alt-2
P	$\tau/(K.t_D)$	-28500	33716	-	-	-	-	-	-
PI	$0.9 \tau/(K.t_D)$	-25650	30344	$3.3t_D$	27	27	-	-	-
PID	$1.2 \tau/(K.t_D)$	-34200	40459	$2t_D$	16	16	$0.5t_D$	4	4

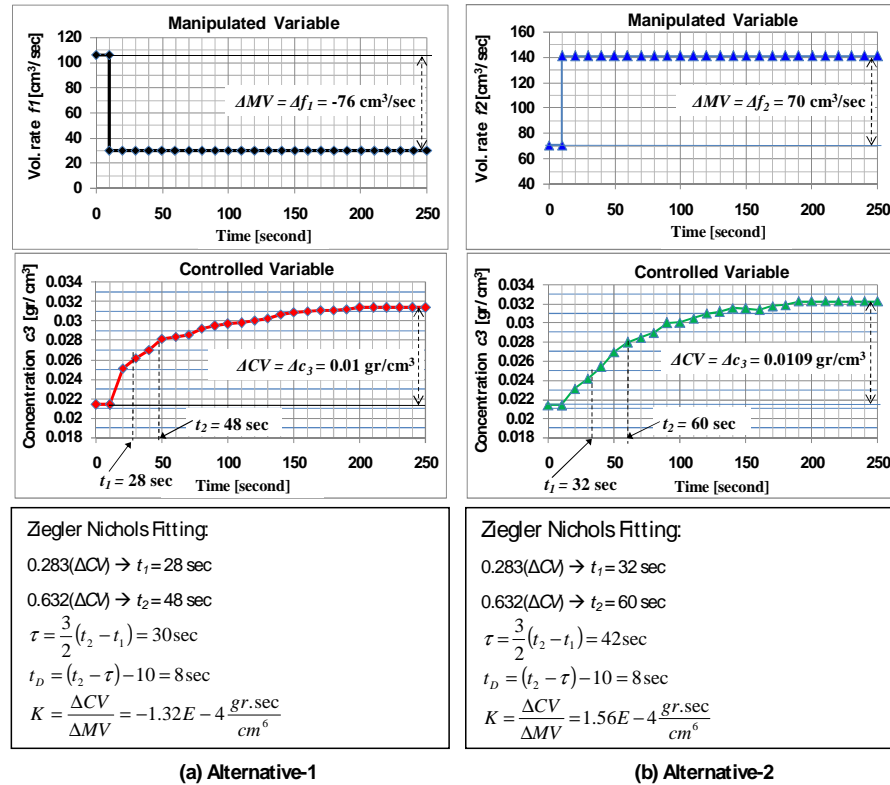


Figure 3. Tuning of Composition Control Parameters: (a) Alternative-1, (b) Alternative-2.

Dynamic Simulation of Composition Control for Alternative-1

Closed loop responses to a change in volumetric rate f_2 are illustrated in Figure 4. The disturbances were made by following both functions of step increase and step decrease. For step increase's disturbance, volumetric rate f_2 is increased by an amount of $70 \text{ cm}^3/\text{sec}$ at time equals 10 seconds. As can be seen, the composition controller (P, PI, and PID) attempts to return concentration c_3 to its normal value of $0.0214 \text{ gr}/\text{cm}^3$. P Control produces an offset of $0.0019 \text{ gr}/\text{cm}^3$. Combination of proportional and integral control modes leads to eliminate an offset. Concentration c_3 can be returned to its set point by both of PI and PID Controls. Closed loop response of PID Control is fastest compared to P and PI Controls; Concentration c_3 can be returned to its set point at time equals 150 seconds.

For step decrease's disturbance, volumetric rate f_2 is decreased by an amount of $56 \text{ cm}^3/\text{sec}$ at time

equals 10 seconds. The concentration c_3 decreases first, and then rises to its normal value. However P Control still produces an off-set of about $0.0028 \text{ gr}/\text{cm}^3$. Closed loop response of PID Control is the fastest; the set point of c_3 can be achieved at time equals 120 sec.

Combination of the three control modes (PID control) gives a closed loop response which has in general the same qualitative dynamic characteristics as those resulting from PI control. To increase the speed of the closed loop response we can increase the value of proportional gain (K_c) and/or decrease the value of integral time constant (τ_I). But increasing K_c and/or decreasing τ_I , the response become more oscillatory and may lead to instability. The introduction of the derivative mode brings a stabilizing effect to the system. Therefore, the derivative control action not only produces faster response but also produce more robust response.

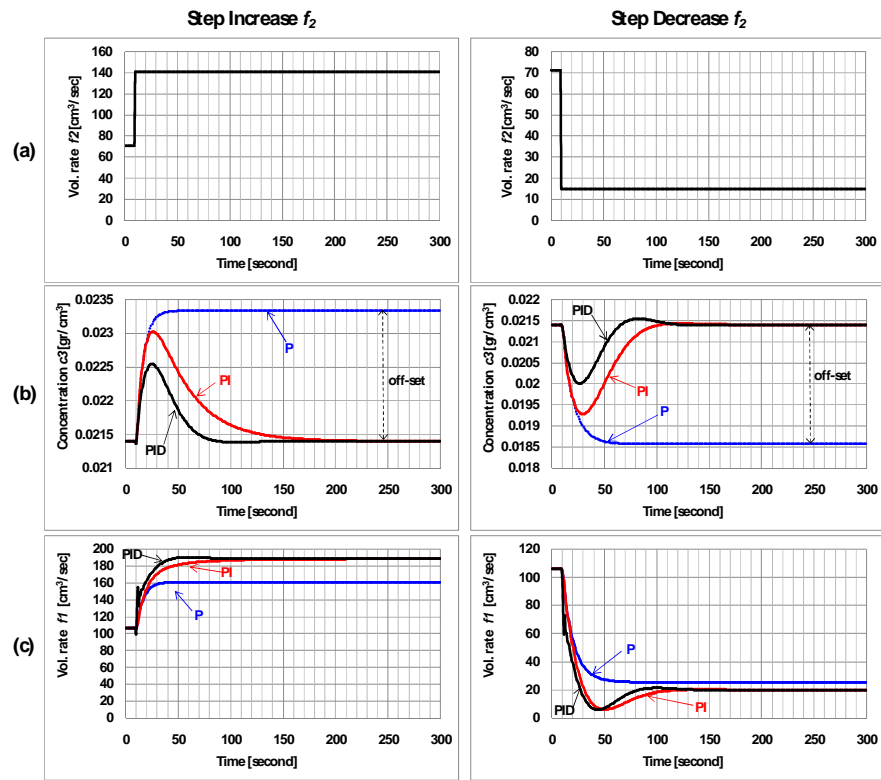


Figure 4. Closed Loop Responses of Composition Control Alternative-1 to a change in volumetric rate f_2 :
 (a) volumetric rate f_2 , (b) concentration c_3 , (c) volumetric rate f_1

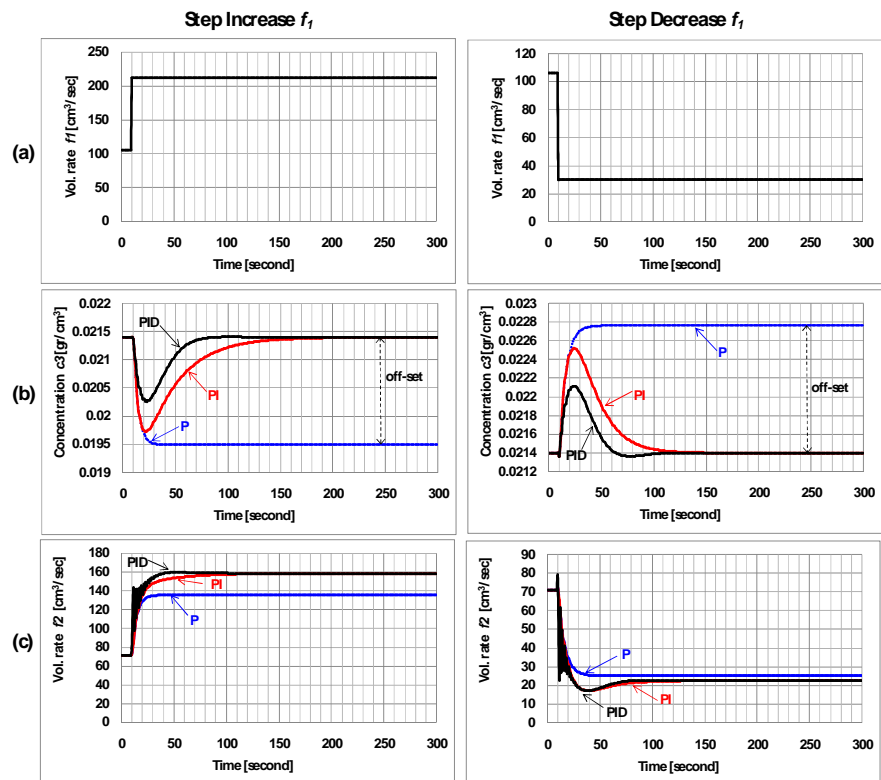


Figure 5. Closed Loop Responses of Composition Control Alternative-2 to a change in volumetric rate f_1 :
 (a) volumetric rate f_1 , (b) concentration c_3 , (c) volumetric rate f_2

Dynamic Simulation of Composition Control for Alternative-2

Figure 5 shows closed loop responses to a change in volumetric rate f_1 . For this alternative, the disturbances were also made by following both functions of step increase and step decrease. For step increase's disturbance, volumetric rate f_1 is increased by an amount of $106 \text{ cm}^3/\text{sec}$ at time equals 10 seconds. As shown in Figure 5, concentration c_3 decreases as volumetric rate f_1 increases, and then concentration c_3 can be returned to its set point by both of PI and PID Controls. P Control produces an offset of 0.0019 gr/cm^3 . Closed loop response of PID Control is the fastest one; concentration c_3 can be returned to its set point at time equals 150 seconds.

For step decrease's disturbance, volumetric rate f_1 is decreased by an amount of $76 \text{ cm}^3/\text{sec}$ at time equals 10 seconds. The concentration c_3 increases as the volumetric rate of water decreases, and then drops to its normal value for PI and PID Controls. Again, P Control still produces an off-set of about 0.0014 gr/cm^3 , and PID Control gives the fastest response.

CONCLUSIONS

This paper discussed tuning of composition control parameters and dynamic simulation in a 10 L mixing tank. Two alternatives of composition control configurations have been proposed. Closed loop dynamic behaviours of the two control configurations have also been explored. According to the dynamic simulation, the tuning results of composition control parameters produce stable responses. This research reveals that PID Composition Control produces the fastest responses compared to both of P and PI Composition Controls.

ACKNOWLEDGEMENTS

I appreciate the technical support on the use of free software SCILAB. I also thank Agustin, M. and Abia, H. for helping me during my research in laboratory.

NOMENCLATURE

ΔCV	steady state change in controlled variable [gr/cm^3]
ΔMV	step change in manipulated variable [$\text{cm}^3/\text{second}$]
τ	effective process time constant [second]
τ_D	derivative time constant [second]

τ_I	integral time constant [second]
$c_{1,2,3}$	concentration of stream 1, 2, 3 [gr/cm^3]
c_3^{SP}	set point of liquid concentration in tank [gr/cm^3]
e	error [gr/cm^3]
$f_{1,2,3}$	volumetric rate of stream 1, 2, 3 [$\text{cm}^3/\text{second}$]
K	steady state gain of the process [(gr.second)/ cm^6]
K_c	proportional gain controller [$\text{cm}^6/(\text{gr.second})$]
t_1	time at which $c_3 = 0.283 \Delta c_{3s}$ [second]
t_2	time at which $c_3 = 0.632 \Delta c_{3s}$ [second]
t_D	effective process dead time [second]
V	liquid volume in tank [cm^3]

REFERENCES

- Hermawan, Y.D., (2011), Implementation of Process Reaction Curve for Tuning of Temperature Control Parameters in A 10 L Stirred tank Heater, *Journal of Materials Science and Engineering*, Vol. 1, No. 4, September 2011, pp. 572-577.
- Hermawan, Y.D., Haryono, G., Agustin, M. and Abiad, H., (2012), Composition Dynamic in A 10 L Mixing Tank, *Seminar Nasional Teknik Kimia "Kejuangan" 2012*, Department of Chemical Engineering, Faculty of Industrial Technology, UPN "Veteran" Yogyakarta, pp. C15-1-C15-6, (in Indonesian).
- Hermawan, Y.D., Suksmono, Y., Narno Putra, R.M. and Puspitasari, M., (2010), Design of Process Control Configuration for Non-Interacting-Tank System using Quantitative Analysis of Relative Gain Array, *Seminar Nasional Teknologi Simulasi (TEKNOSIM) 2010*, Department of Industry and Mechanical Engineering, Faculty of Engineering, Gadjah Mada University, pp. 75-81, (in Indonesian).
- Smith, C.A. and Corripio, A.B., (1997), *Principles and Practice of Automatic Process Control*, John Wiley & Sons, 2nd Ed., New York, pp. 303-367.
- Widayati, T.W. and Hermawan, Y.D., (2007), Mixing Characteristic in A Horizontal Stirred Tank, *Seminar Nasional Teknik Kimia "Kejuangan" 2007*, Department of Chemical Engineering, Faculty of Industrial, UPN "Veteran" Yogyakarta, pp. B12-1-B12-6, (in Indonesian).