

From: rkamal@spe.org [mailto:rkamal@spe.org]
Sent: Wednesday, August 05, 2009 3:51 PM
To: dedykris@yahoo.com, sbnugroho@pertamina-ep.com
Subject: SPE-126578-PP Accepted for Technical Presentation



Paper Proposal Title: "INTEGRATING PRODUCTION ANALYSIS AS A PLAN OF PATTERN SELECTION FOR CHEMICAL FLOOD PILOT PROJECT IN LIMAU BLOCK, PERTAMINA EP"
Tracking #: SPE-126578-PP

Dear Dedy Kristanto and Susanto Budi Nugroho:

***** PLEASE ACKNOWLEDGE RECEIPT OF THIS EMAIL*****

Thank you for submitting your proposal for the North Africa Technical Conference and Exhibition, scheduled 14 - 17 February 2010 at the InterContinental Cairo Citystars, Cairo, Egypt. The Programme Committee has carefully reviewed each proposal for particular relevance to the theme of the conference, and we are delighted to inform you that your paper proposal has been accepted for presentation in a technical session.

Prior to the conference you are required to submit a full manuscript (approximately 7,000 words in length, including figures and tables) for inclusion in the Conference Proceedings. Instructions for preparing and submitting your manuscript are located on the following website:

<http://epubs.spe.org/authorkits/2010NATC/>

Please note the following:

Reply to this email to acknowledge receipt of the acceptance notification and access to the Author Kit URL information and to confirm that you will submit the manuscript and will present at the conference, no later than Tuesday, 18 August 2009.

Manuscripts are to be submitted online via the Paper Proposal Management System by Tuesday, 1 December 2009.

NOTE: PLEASE PREPARE YOUR MANUSCRIPT USING THE NEW SINGLE COLUMN TEMPLATE PROVIDED IN THIS AUTHOR KIT. MANUSCRIPTS ON ANY OTHER OLD TEMPLATES WILL NOT BE ACCEPTED.

Transfer of Copyright form completed by each author corresponding to a paper and the Paper Information forms must be submitted to NATC c/o SPE Middle East Office by Tuesday, 1 December 2009. PAPERS WILL NOT BE ACCEPTED WITHOUT THE COMPLETED FORMS.

LATE SUBMISSIONS WILL NOT BE ACCEPTED AND THERE WILL BE STRICTLY NO EXTENSIONS TO THE SUBMITTAL DEADLINE.

Your paper proposal is accepted on the condition that **COMMERCIALISM MUST BE AVOIDED**. In preparing your manuscript and presentation, please remember that the use of trade and/or company

names is prohibited in paper titles and in tables and figures, and should be avoided in the text. If the presence of commercialism is detected in manuscripts submitted for the Conference Proceedings, the Programme Committee reserves the right to withdraw the paper from the Proceedings and Conference Programme.

In planning your presentation, allow 20 minutes for the presentation and 10 minutes for discussion. The schedule of events, technical programme listing, conference registration form and hotel information will be sent to you shortly.

If you have any questions about the submission of your paper, please do not hesitate to contact me.

Detailed information regarding the timing of your session, presentation and other preparation leading to the conference will be sent to you in due course.

The following number is your login number for the SPE Paper Proposal Management System: 3434226. Please use it every time you log in to the system in order for us to correctly associate your work with you. If you forget your password, please try the Forgot Password link on the login screen or contact our Customer Service department at service@spe.org for any other login issues.

We look forward to working with you during the months ahead and to your participation at the conference in February in Egypt!

Regards,

Roshan Kamal
Events Assistant
SPE Middle East, N. Africa & India
PO Box 502217, Office S07-09, Block 17
Dubai Knowledge Village, Dubai, UAE
Tel: +971 4 390 2511
Fax: +971 4 366 4648
Email: rkamal@spe.org
Website: www.spe.org



SPE-126578-PP

Integrating Production Analysis as a Plan of Pattern Selection for Chemical Flood Pilot Project in Limau Block, Pertamina EP

Susanto Budi Nugroho, SPE, Pertamina EP Indonesia, and Reza Nur Ardianto, SPE, Pertamina EP Indonesia, and Dedy Kristanto, SPE, UPN "Veteran" Yogyakarta Indonesia

Copyright 2010, Society of Petroleum Engineers

This paper was prepared for presentation at the SPE North Africa Technical Conference and Exhibition held in Cairo, Egypt, 14–17 February 2010.

This paper was selected for presentation by an SPE program committee following review of information contained in an abstract submitted by the author(s). Contents of the paper have not been reviewed by the Society of Petroleum Engineers and are subject to correction by the author(s). The material does not necessarily reflect any position of the Society of Petroleum Engineers, its officers, or members. Electronic reproduction, distribution, or storage of any part of this paper without the written consent of the Society of Petroleum Engineers is prohibited. Permission to reproduce in print is restricted to an abstract of not more than 300 words; illustrations may not be copied. The abstract must contain conspicuous acknowledgment of SPE copyright.

Abstract

Limau Block, operated by Pertamina EP lies in South Sumatera basin, located 90 km Western part of Prabumulih. Consisted of eight fields, the first well was drilled in April 1951. The production reached a peak of 49,000 BOPD. The reservoir was divided into 22 layers mainly due to faulting. The pilot water flood operation was initiated in April 1991 by injecting water. Currently, Limau block is a mature oil field. By April 2009 production had declined to 10,000 BOPD. It is estimated that more than 80% primary reserves have already been produced and recovery factor has reached 36 %. Most of the reservoirs have been intensively produced over the life of the field and only a few of them are still producing today at low rate due to depletion.

EOR department tried to identify reservoir with remaining production potential that are candidates for Pilot Chemical Flooding Project, which will be the first Chemical Flood Project for Pertamina EP. The chemical selection is ongoing progress. It has become much more of a challenge for the team consisting of integrated Geophysics, Geology, Reservoir, Production, Process Facility, Project Management and Economic Evaluation.

This paper presents the result of Production Part as integrated analysis for Chemical Flooding. The analysis, which was performed by integrated analysis of production and injection, tracer test, well history and surface data, has identified inter well communication between injection well and production well. It shows that the most prospective candidate for Chemical Flood pilot project was S layer in Q-51 field, the pilot project was planned for inverted five (5) spot patterns and predicted breakthrough time was 90 days, it was also predicted a tertiary peak of 3,100 BOPD. Currently, Q-51 field, which had reached a primary peak of 20,600 BOPD and secondary peak of 2,000 BOPD, is injecting 36,820 BOPD through seven (7) peripheral injection wells and producing 31,031 BOPD through 13 production wells. This analysis is useful result as a part of countercheck for Geology and Reservoir Modeling regarding to the plan of Chemical Flooding Pilot Project.

Introduction

Production oil increase successfully with secondary recovery as well as tertiary recovery depend on reservoir reserves, reservoir heterogeneity, field maturity and reservoir performance (field). In secondary recovery phase or tertiary recovery phase are required field integration study to increase production capacity or to drainage oil reserves more than currently. Limau Field has specific reservoir characteristic. Characteristic in Limau Field dominated with sandstone and separated with many fault, with the result that required integration study to determine connectivity or relationship one layer to another layer according vertical direction and horizontal direction. Once of method or technology to determine connectivity and relation one layer to another layer (vertical or horizontal direction) it's Tracer

Test method and Shale Gauge Ratio (SGR) calculation method. This methods have purpose to identify reservoir characteristic before the application of Enhanced Oil Recovery (EOR) phase to reservoir. Base on Tracer method and SGR calculation we can get information result concerning about reservoir compartment and flow path to identify fluid flow inside reservoir which influenced by reservoir heterogeneity distribution and fault compartment.

Geological Review

Limau Field Structure is located in South Sumatera Basin it's about \pm 90 km in the direction of West Prabumulih city. Limau Field Anticlinorium type Structure classifier (**Fig. 1.**) with continuity West to East direction and separated

with active fault relatively South to North direction separated with eight (8) Block with twenty two (22) layers. Limau Field stratigraphy interpretation have five (5) horizons that is Top Batu Raja Formation, Top Talang Akar Formation, Top Talang Akar 1 Formation (S Layer and W Layer). The concern of Field study and analysis that is Block Q-51 with S Layer it is a take a part Limau Field. The sand correlation of S Layer Block Q-51 of Limau Field is shown in **Fig. 2**.

Field Production History

The first drilling in Limau Filed was on April 1951, until now have 315 productions well. In Block Q-51 S Layer produced with 14 wells. Pilot water flood project was carried on April 1991 can produced 10.000 BOPD it is estimates that more 80% primary reserves have already been produced and recovery factor has reached 36%. The production history of Block Q-51 S Layer is shown in **Fig. 3**. In **Fig. 4** shows the production decline analysis of Block Q-51 S Layer of Limau Field. Based on the **Fig. 4**, it is shown that Block Q-51 S Layer has EUR is 1257.25 Mbbl and Remaining Reserves (RR) is 175.21 Mbbl. From **Fig. 4**, also shows that the S layer still could be developed indicated by the two parallel line of decline line prediction interpolated through the economic limit rate.

Fig 5 shows the Chan's diagnostic plot, which describe that in the Block Q-51 S Layer of Limau Field there is a problem with water coning (normal displacement with high WOR) indicated by the higher WOR and WOR' in the end of production period. **Fig. 6** is shows the Fetkovich Type Curve Block Q-51 S Layer of Limau Field. Based on plot between oil production vs time in **Fig. 6**, it is shows that the Block Q-51 S Layer has the EUR is 1252.6 Mbbl and Remaining Reserves is 170.56 Mbbl, beside that also has the results of permeability (k) is 27 mD, skin factor (S) is -3, and drainage area is 462 acre.

Furthermore, based on the production history and the potential of Block Q-51 S Layer of Limau Field, then the development plan of chemical flooding then was set up to increase production after water injection. For that purpose, the integration studies of Geophysics, Geology, Reservoir characterisation, Production analysis, Process Facility, Project Management and Economic Evaluation, Fault Sealing Analysis (FSA) and Tracer Test Survey has been done.

Fault Seal Analysis, Water Injection and Tracer Test Survey

Fault sealling analysis in Limau Field was carried out using Fault Sealling Analysis method (FSA) by Yielding et. al. (1997), this method use lithology variation (stratigraphy) and Fault attribute like Throw and move distance to identify sealling potential, and potential sealling analysis was carried out using of Shale Gauge Ratio Analysis (SGR). This method use material granulated proportion enter in to fault

gauge source from wall rocks, SGR calculation result calibrated using tracer test result. Produce result for Shale Gauge Ratio (SGR) is interval SGR value. SGR calculation using algoritm, this method calculated by Yielding (**Fig. 7** and **Fig. 8**), that algoritma we can know fluid flow capacity in to fault (leak/seal). Equation of SGR algoritma is as follows:

$$SGR = \sum(V_{sh} \cdot \Delta z) / T \times 100\%$$

where:

V_{sh} = Value of shale volume in lithology

Δz = Lithology or layer thickness

T = Throw

Shale Gauge Ratio (SGR) value is becomes parameter to determine that fault is leaking or sealling, with the result that if SGR value more and more higher that indicated fault is sealling (close).

Water injection was used in Block Q-51 S Layer of Limau Field to improve oil recovery and increased production. In oil reservoir, reservoir pressure depletion as long as oil produced from reservoir. Pressure decline until under bubble point pressere can make gas liberated (light component). Bubble gas makes new phase and flow in to production well if saturation phase pass by saturation equilibrium value. Effect for gas produced is makes decrease reservoir energy (pressure) to produced oil, with the result that for naturally recovery is decrease. Generally if reservoir pressure decline due to uncontrol can affect reduction recovery. The result of water injection analysis in Block Q-51 S Layer of Limau Field is shown in **Fig. 9**.

Reservoir pressure decline can gradually according if produced from well produced in reservoir balance with water influx from aquifer. Water play a part in contributed to reservoir fill recharge to replace oil produced into produced well, beside that water play role for reservoir pressure support. Based on that reason many company use water flood method (water injection) to keep reservoir pressure performance still high as pressure maintenance.

Water injection method in Secondary recovery phase, is purpose to get residual oil in reservoir which can't recovery when primary recovery. Water injection method in principle is injected the fluid into reservoir did not to maintenance reservoir pressure but to sweep residual oil in that reservoir. Secondary recovery phase, injection operation use "Dispersed Water Injection" method, where water injected to oil zone horizontally enter in the direction to well produced base on injection and production pattern. Water flood methode is on of secondary recovery phase where water injected to push oil and produced goes to production well after economic limit from primary recovery.

Water injection in this paper (see **Fig. 9**) is purpose to increase recovery from sweep residual oil. Principleley water injected to well injection and oil produced to production well. Generally injection well can use existing in the Field or

can convert from production well if production well is not prospect again to produced, if required injection well and need new well that study must decide the location where can sweep residual oil optimally from reservoir. Isopermeability map can be used to decide where new injection well location, and to reduce breakthrough time.

Another factor to increase oil recovery from the reservoir is makes injection and production well pattern. To make injection and production pattern consideration many parameters must identified, such as:

- Reservoir or formation heterogeneity
- Reservoir structure
- Position and location of existing well
- Economic factor

Injection and production pattern that usually used generally in the field are:

- Direct line drive
- Staggered line drive
- Four spot
- Five spot
- Seven spot

Tracer its chemical component, that can be soluble in fluid with small concentration without any effect for physical fluid properties and physical rock properties and also can be used as a detected tool. Solubility Tracer ratio in hydrocarbon is between water phase and hydrocarbon phase, tracer molecule can movement between water phase and hydrocarbon phase because Tracer molecules have more partition concentration (absorb in to rock). Tracer result in this paper is result from application Tracer method in the Limau Field by Pertamina EP.

Analysis

Tracer test analysis method principally is injected Tracer component to well injection and record tracer test from monitor well (see **Fig. 10**). Application of Tracer Test in the Limau field is use one (1) injection Tracer well that is well L5A-64 and seven (7) monitor wells, that are L5A-131, L5A-156, L5A-79, L5A-222, L5A-93, L5A-117 and L5A-51. The same well in Limau Field separated with fault that is L5A-156, L5A-79, L5A-222 and L5A-51 (see **Fig. 10**). Base on the Tracer result analysis, we can know fault type in Limau Field is sealling, partially sealling or leaking, starting that result we have purpose to decide where fault is sealing partially sealling and leaking. Base on Tracer record result with time breakthrough 90 days (see **Fig. 11** and **Table 1**.) connectivity analysis base on Tracer test, have a result that all monitor well in Limau Field, specially for separated by fault getting respon from injection well, with the result that Fault type in S Layer Block Q-51 is indicated Leaking Fault Type. Sealling capacity based on SGR analysis compared with Pressure data and Tracer Test gave the results as follows:

- SGR \leq 0.2 : leaking
- SGR 20-60 % : partially sealing

SGR \geq 60 % : sealing

Fault Analysis in Limau Field generally have high sealling capacity, indicated that fault type is leaking. Base on Tracer test result shown that connectivity from injector well with monitor (production) well, that separated with fault after found out tracer record, leaking fault type and connectivity between injection well with monitor (production) well and compared with SGR analysis. Tracer result and SGR analysis result is shown in **Fig. 12**. Based on the tracer and SGR results, and then is used to plan the application of chemical flooding in Limau Field S Layer Block Q-51 to increase oil recovery.

Application of chemical flooding to increase oil recovery or production in Limau Field required the integration study between Geophysics, Geology, Reservoir, Production, Process Facility, Project Management and Economic Evaluation, Fault sealling Analysis and Tracer test method, based on study results we can know reservoir characteristic, reservoir heterogeneity and connectivity between layer horizontal direction and vertical direction, Accompanying Limau field geology, which have anticlinorium type, separated become many blocks. Look up many data and Limau Field geology, wanted for many study, to know connectivity. Method to observe and analysis connectivity between Block or Layer according integration it is Shale Gauge Ratio (SGR) analysis and Tracer test analysis Method. Out of SGR analysis result give analysis fault in Limau Field which separated block have leaking type (connected) indicated from SGR analysis give Result value 0 - 0.2 %. To give evidence that Fault is leaking we can analysis with Tracer Test. Principely Tracer Tests it is Injected Tracer to Injection well and monitor to well monitor in same block or another block where separated with fault. Well injection will be used to injected in Limau Field that is L5A-64 and 7 (seven) monitor well thht is L5A-131, L5A-156, L5A-79, L5A-222, L5A-93, L5A-117, L5A-51. In Limau Field there is have well, where located separated fault, that is L5A-156, L5A-79, and L5A-51. Base on Breakthrough time record vs Tracer concentration (Tracer test) as shown in **Table 1** and **Fig. 11**, obtained average results for all monitor well have 90 days time breakthrough, base on record data fault type in Limau Field it is Leaking type. This analysis appropriated with SGR analysis method give indicated taht faults separated in Limau Field it is Leaking type. With existence results data and analysis Limau field is recommended to chemical flood injection application. Looking position and well coordinate in Limau Filed especially for S Layer in Block Q-51, support for injection pattern to sweep efficeincy and to increased production. Based on the integration studies it shows that the most prospective candidate for chemical flood pilot project was S layer in Q-51 field, the pilot project was planned for inverted five (5) spot patterns and predicted breakthrough time was 90 days, it was also predicted a tertiary peak of 3,100 BOPD. Currently, Q-51 field, which had reached a

primary peak of 20,600 BOPD and secondary peak of 2,000 BOPD, is injecting 36,820 BWPD through seven (7) peripheral injection wells and producing 31,031 BFPD through 13 production wells, where the result of injection pattern is shown in **Fig. 13**.

Conclusions

1. Based on the production history shows that Block Q-51 S Layer of Limau Block is still potential to be developed using chemical flooding.
2. Based on the Tracer Test Survey compared with SGR analysis method it is obtained that the interval value 0 - 0.2 % which representation of indicated Fault type in Limau Field S Layer Block Q-51 is leaking Fault Type.
3. Connectivity between layers can be detected using Tracer Test method, and the result from Tracer Test analysis can be compared with the integration study for identification of reservoir heterogeneity and reservoir characteristic.
4. Injection time breakthrough result for Block Q-51 S Layer of Limau Field from the Tracer Test is 90 days.
5. Factors have to be considered in designing the injection production pattern are reservoir heterogeneity, reservoir structure, position and location of existing well, and economic.
6. The injection pattern for sweep optimalization can use convert well of suspended well to injection well.
7. The 5 (five) and seven (7) peripheral injection well patterns can be applicated in Block Q-51 S Layer of Limau Field.

Nomenclature

EOR : Enhanced Oil Recovery
 EUR : Estimate Ultimate Recovery
 RR : Remaining Reserves
 RF : Recovery Factor
 k : Permeability
 S : Skin Factor
 FSA : Fault Seal Analysis
 SGR : Shale Gauge Ratio
 Vsh : Value of shale volume in lithology
 Δz : Tickness of the layer

T : Throw

Acknowledgments

The authors thank the Pertamina EP, for the support and permission to publish and present this paper. The authors also would like to thank to V. Dedi Cahyoko Aji for the kind support and assistance in preparing this paper.

References

1. Shook, G. M., and Hope, J. F., "Tracer Interpretation Using Temporal Moment on a Spreadsheet" Idaho National Laboratory Documents, 2005.
2. Asakawa, K., "A Generalized Analysis of Partitioning Interwell Tracer Test", University of Texas, 2005.
3. Ahmed, T., "Advanced Reservoir Engineering", Elsevier, Gulf Professional Publishing, 2005.
4. Craft, B. C., and Hawkins., "Applied Petroleum Reservoir Engineer", 2nd Edition, Prentice Hall, 1991.
5. Donaldson, E. C., "Enhanced Oil Recovery I, Fundamental and Analysis", Elsevier Science Publishing Company, 1985.
6. Guo, B., "Petroleum Production Engineer", Elsevier Science and Technology Books, 2007.
7. Havlena, D., and Odeh, A. S., "The Material Balance as an Equation of Straight Line", Journal of Petroleum Technology, August 1963, p. 896 - 900.
8. Morley, C. K., and M. Burhannudinnur., "Anatomy of Growth Fault Zones in Poorly Litized Sandstones and Shales: Implication for Reservoir Studies and Seismic Interpretation: Part 2" Seismic Reflection Geometries". Petroleum Geoscience, Vol.3, 1997, p. 225-231.
9. Lowell, J. D., "Structural Styles in Petroleum Exploration", Oil and Gas Consultants International Inc. Publications, Tulsa, 1985.
10. Sapiie, Benyamin., "Fault Seal Analysis", Department of Geology - Bandung Institute of Technology, 2004.
11. Smith, D. A., "Theoretical Considerations of Sealing and Nonsealing Faults", Bulletin of The American Association of Petroleum Geologists, Vol. 50, No. 2, p. 363-374, Houston, Texas, 1966.
12. Smith, D.A., "Sealing and Nonsealing Faults in Louisiana Gulf Coast Salt Basin", The American Association of Petroleum Geologists Bulletin, Vol. 64, No.2, p. 145-172, NewYork, 1980.
13. Pertamina EP., "Plan of Development Integration Study", Final Report and Analysis, 2008.

TABLE 1- TIME BREAKTHROUGH BLOCK Q-51 S LAYER OF LIMAU FIELD

Date	<u>L5A-51</u>	<u>L5A-74</u>	<u>L5A-79</u>	<u>L5A-117</u>	<u>L5A-131</u>	<u>L5A-156</u>	<u>L5A-193</u>	<u>L5A-222</u>
	Concentration (pCi/cc)	Concentration (pCi/cc)	Concentration (pCi/cc)	Concentration (pCi/cc)	Concentration (pCi/cc)	Concentration (pCi/cc)	Concentration (pCi/cc)	Concentration (pCi/cc)
17-Oct-95	0	0	0	0	0	0	0	0
12-Dec-95	0	0.09	0.03	0	0	0	0	0
5-Mar-96	0	0.04	0.015	0.04	0.07	0.05	0.06	0.02
19-Mar-96	0.18	0.2	0.05	0.16	0.25	0.21	0.15	0.15
16-Apr-96	0.82	1.1	0.95	1.95	2.1	1.6	1.04	1.07
14-May-96	0.808	1.05	0.825	1.7	0.26	0.84	0.78	0.85
11-Jun-96	0.07	0.08	0.26	0.1	0.09	0.09	0.14	0.2
9-Jul-96	0	0.09	0	0.03	0.04	0.04	0.05	0.04
8-Aug-96	0.02	0.02	0	0.01	0.02	0	0.04	0.042
3-Sep-96	0	0.02	0.02	0.01	0	0	0.01	0

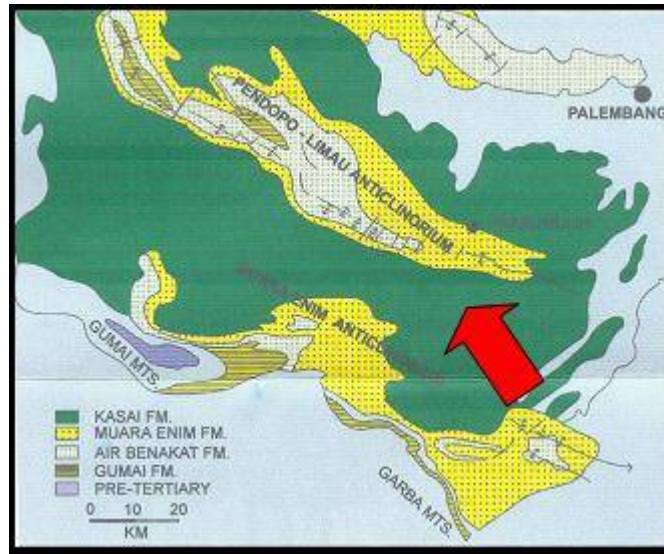


Fig. 1- Geological Map of Limau Field and Anticlinorium Pendopo-Limau

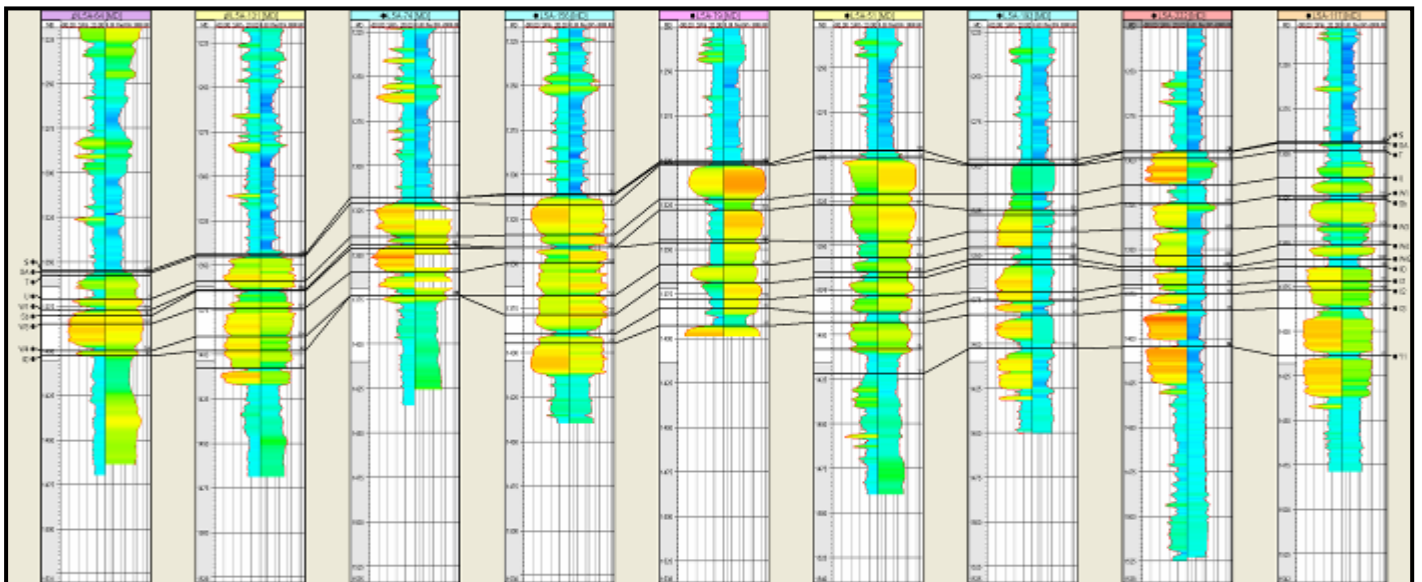


Fig 2- Sand Correlation Block Q-51 S Layer of Limau Field

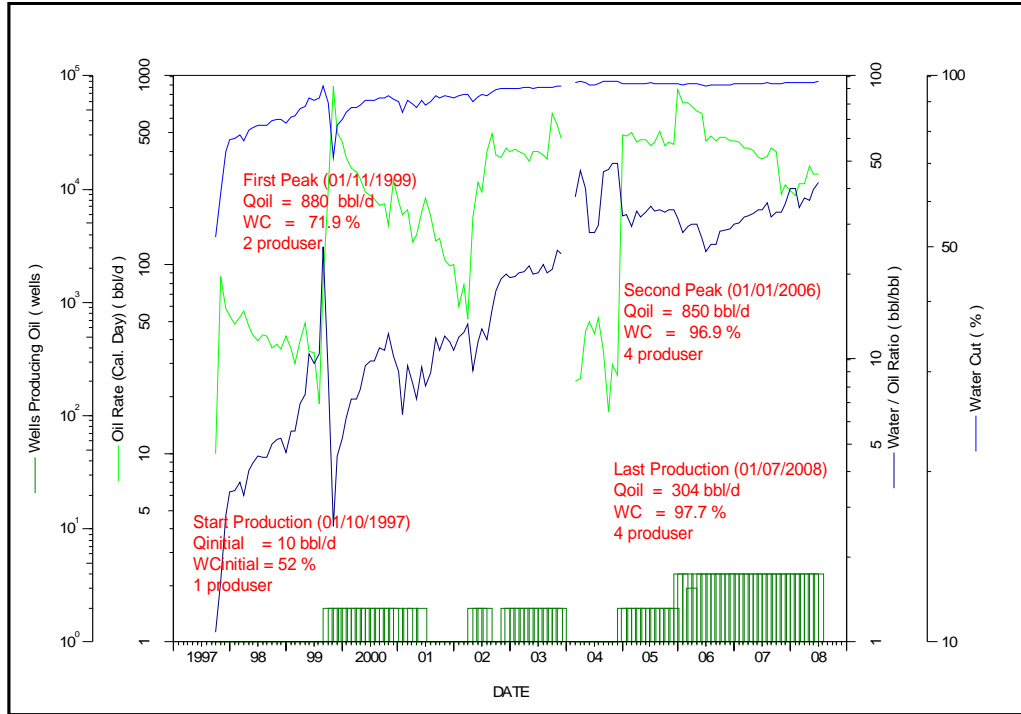


Fig. 3- Production History Block Q-51 S Layer of Limau Field

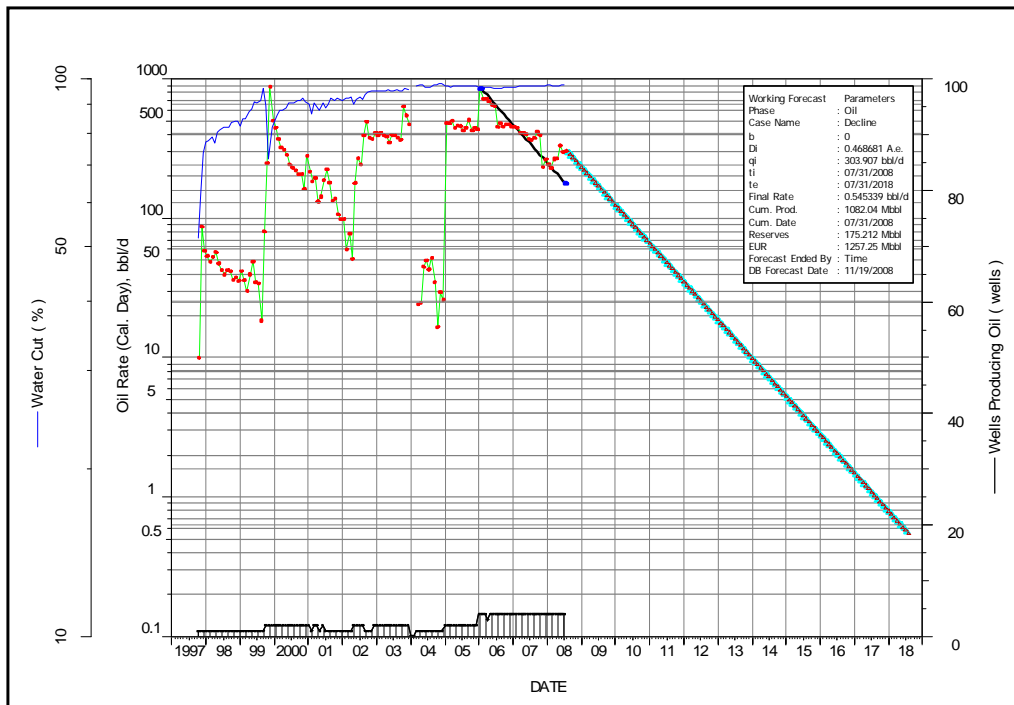


Fig. 4- Production Decline Block Q-51 S Layer of Limau Field

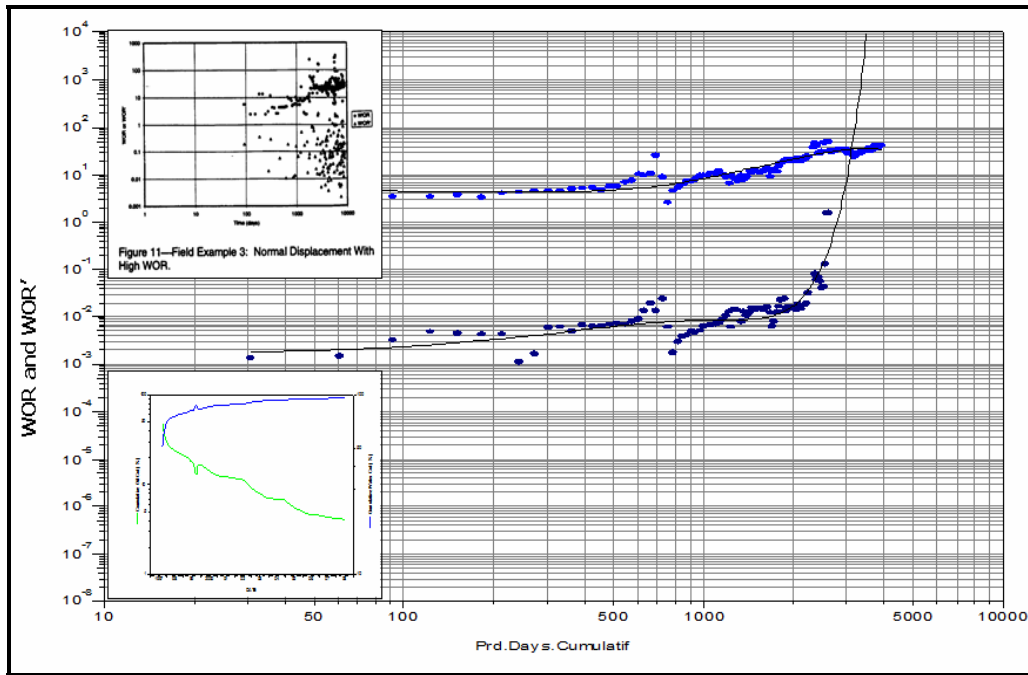


Fig. 5- Chan's Diagnostic Block Q-51 S Layer of Limau Field

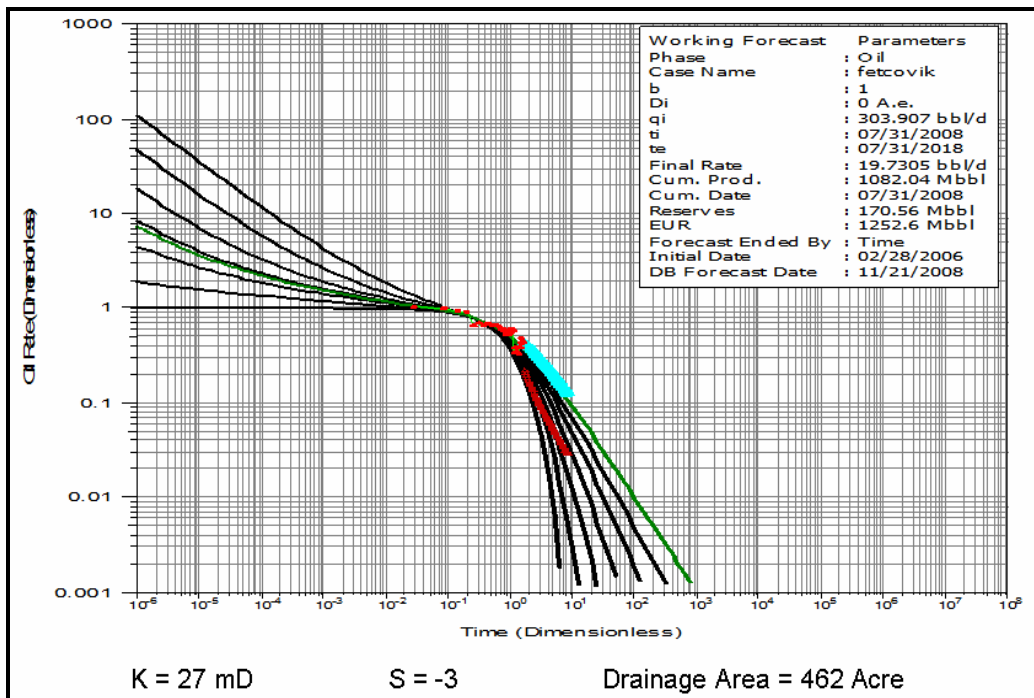


Fig. 6- Fetkovich Type Curve Block Q-51 S Layer of Limau Field

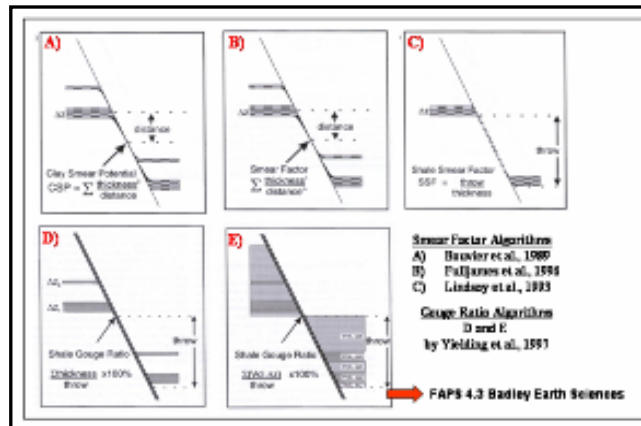


Fig. 7- SGR Calculation from Yielding, et. al. (1997)

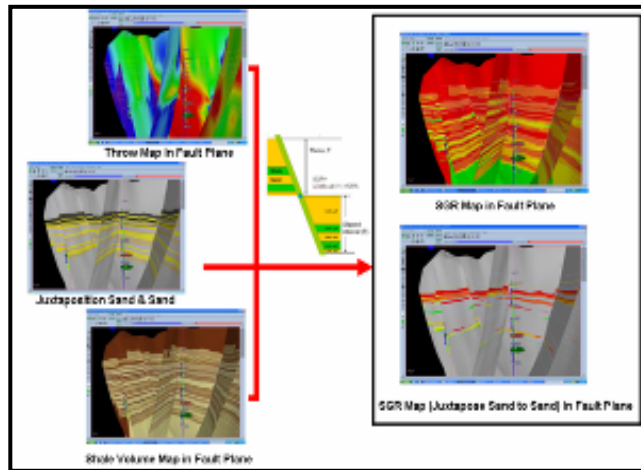


Fig. 8- Fault Seal Analysis Flow Chart

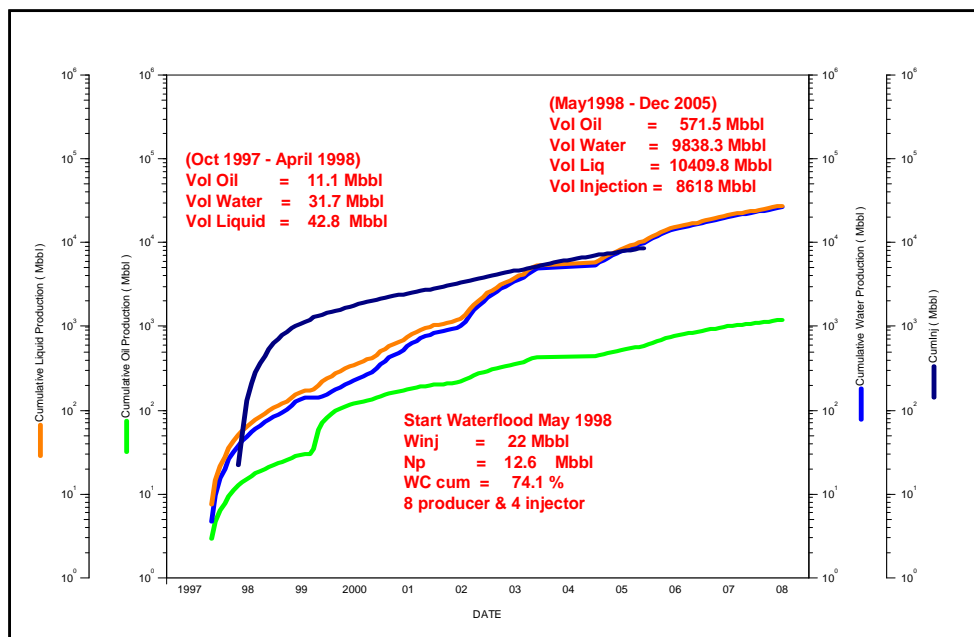


Fig. 9- Water Injection Analysis Block Q-51 S Layer of Limau Field

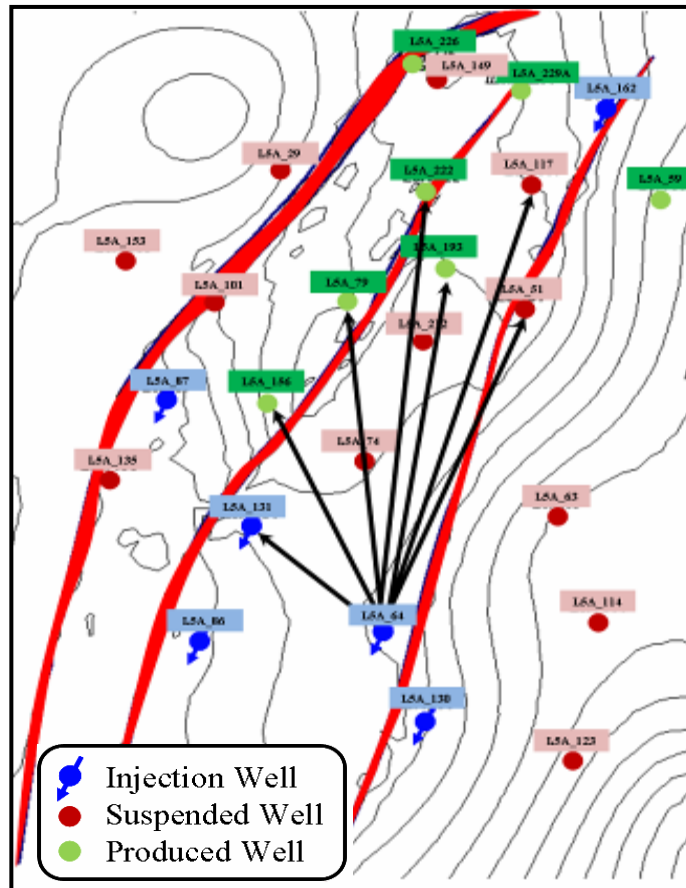


Fig. 10- Tracer Monitoring in Block Q-51 S Layer Limau Field

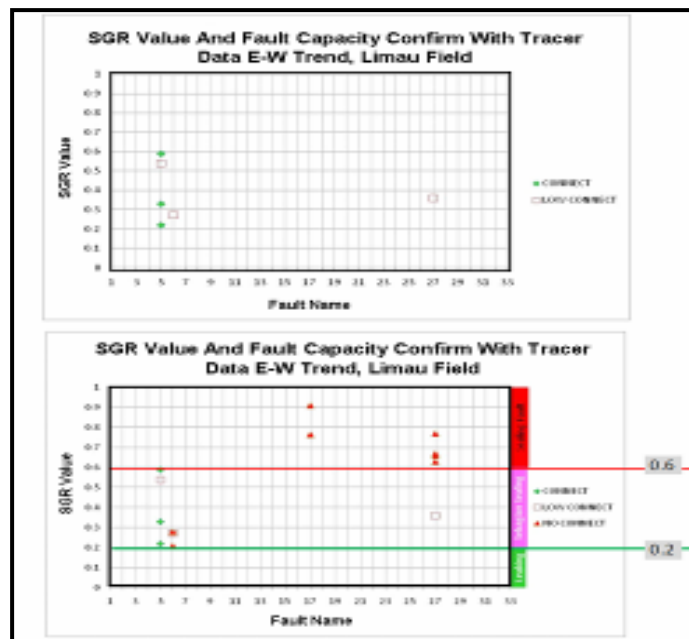


Fig. 11- SGR and Fault Capacity Cut Off Based on Limau Field Tracer Test

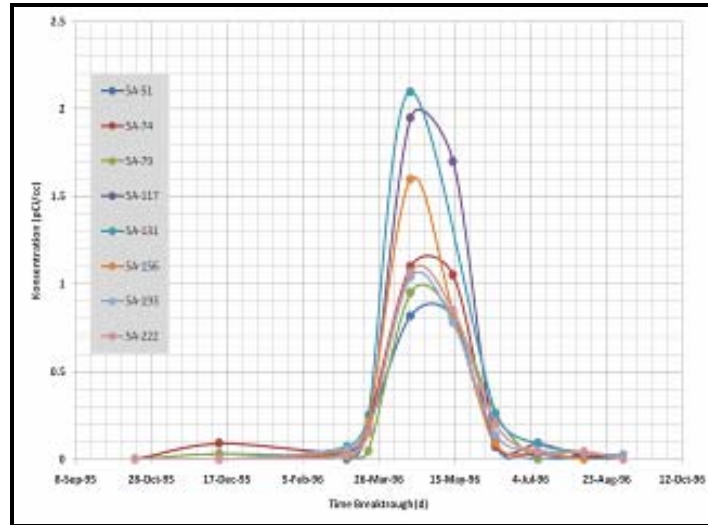


Fig. 12- Time Breakthrough vs Concentration Tracer Data

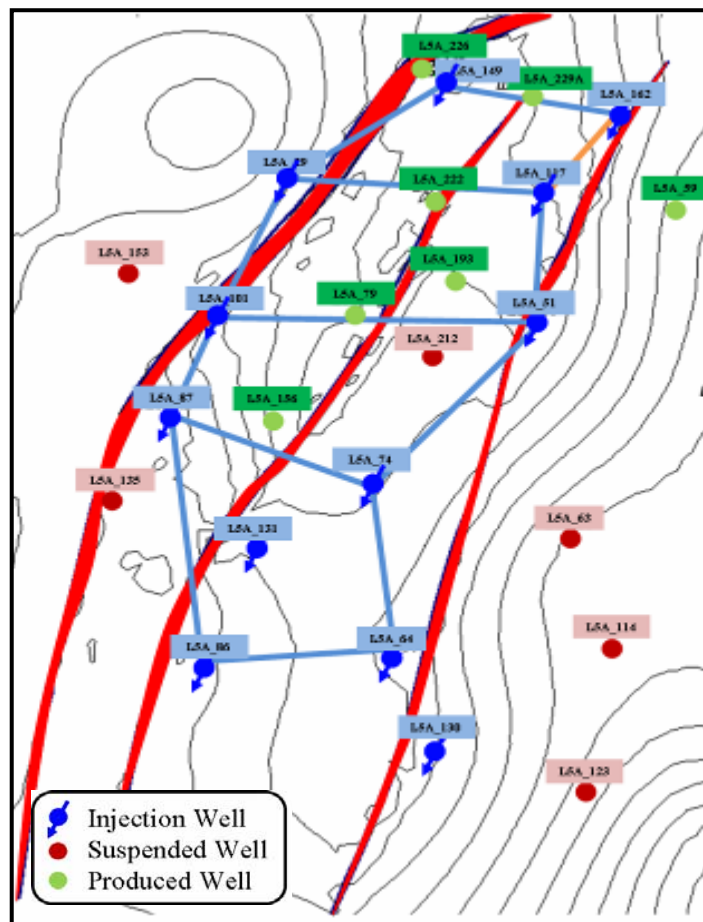


Fig. 13- Injection Pattern of Block Q-51 S Layer Limau Field