

PALEOTEMPERATURE
INTERPRETATION BASED ON
CALCAREOUS
NANNOPLANKTON OF
KEDUNG SUMBER RIVER
SECTION, SOKO,
BOJONEGORO, EAST JAVA

by Siti Umiyatun Choiriah

Submission date: 05-Sep-2019 12:01AM (UTC+0700)

Submission ID: 1167195308

File name: as_an_Parameter_to_Interpreted_Paleotemperature_no_pustaka.docx (1.4M)

Word count: 1475

Character count: 9265

PALEOTEMPERATURE INTERPRETATION BASED ON CALCAREOUS NANNOPLANKTON OF KEDUNG SUMBER RIVER SECTION, SOKO, BOJONEGORO, EAST JAVA

Siti Umiyatun Choiriah¹, Carolus Prasetyadi¹, Rubiyanto Kapid²,
Dwi Fitri Yudiantoro¹ and Muhammad Syaifudin¹

Siti Umiyatun Choiriah

¹UPN "Veteran" University/Department of Geology Engineering, Yogyakarta, Indonesia
Email: umiyatunch@yahoo.com

¹Carolus Prasetyadi, Dwi Fitri Yudiantoro, Muhammad Syaifudin
UPN "Veteran" University/Department of Geology Engineering, Yogyakarta, Indonesia
Email: fcprasetyadi@upnyk.ac.id, d_fitri@yahoo.com, syaifudin_muhammad@yahoo.com

Rubiyanto Kapid
Bandung Institute of Technology/Department of Geology, Bandung, Indonesia
Email: ruby@gl.itb.ac.id

Abstract

Analysis of 64 samples taken from the Kedung Sumber River section represent of Kalibeng Formation, Atasangin Member, Klitik Member, Sonde Formation, and Pucangan Formation. The detail of nannoplankton analysis showing that temperature changes influenced to the growth of nannoplankton. Result of this study reveals that a number of 32 zones paleotemperature change. Age of the Kalibeng Formation is Late Miocene to Early Pliocene (NN10-NN13), divided into nine zones: 1/warm, 2/cold, 3/transitional, 4/warm, 5/cold, 6/warm, 7/cold, 8/cold, 9/warm zone. Atasangin Member are divided into 3 zones: 10/cold, 11/warm, 12/cold zone. Age of this member is Early Pliocene (NN13-NN14). Klitik Member is Early Pliocene to Late Pliocene (NN14-NN17), and divided to 7 zones: 13/transitional, 14/warm, 15/cold, 16/warm, 17/cold, 18/warm zone. Age of Sonde Formation is NN18-NN20 (Late Pliocene to Early Pleistocene), have into 7 zones: 19/cold, 20/warm, 21/transitional, 22/cold, 23/transitional, 24/cold, 25/transitional, 26/cold, 27/transitional zone, 28/warm, 29/cold zone. Pucangan Formation are divided into 3 zones: 30/warm, 31/transitional, 32/cold zone. Age of this formation is Pleistocene (NN20-NN21).

Keywords: Palaeotemperature, nannoplankton, Kedung Sumber

INTRODUCTION

Researches of fossil are one of the most important tools for the study of sedimentary rocks and basins. First, the succession of evolutionary appearances and extinctions provides age control, which is critical for understanding of basins evolution and validation of geological concepts. Second, fossils are useful for interpretation of local paleoenvironment, paleoclimate, and also reconstructions of paleobiogeographic (van Gorsel., et al., 2014).

The Kedung Sumber River section, located in Soko, Bojonegoro, East Java, Indonesia (Figure 1). The section consists of Kalibeng Formation, Atasangin Member, Klitik Member, Sonde Formation, and Pucangan Formation.

The study area is a part of Kendeng Zone, East Java Basin. This section of the study area was selected because this section has a sedimentation sequence consisting mostly of fine-grained marine sedimentary rocks that contain abundant microfossils with age from Early Miocene to Pleistocene.

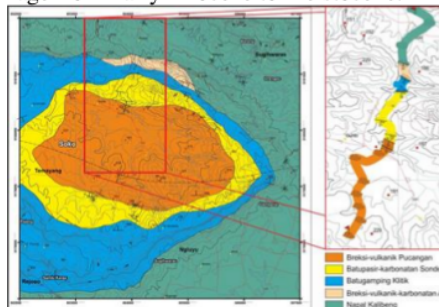


Figure 1. Geological map of the study area

Calcareous nannoplankton included of planktonic organisms, who are sensitive to environmental changes, such as fluctuations of light, salinity, temperature, sea-level change, ocean productivity, nutrients and water pollution. The role of the calcareous nannoplankton in reconstructing paleoecological changes, for identifying global and regional environmental development, and to predict of climatic change.

The calcareous nannoplankton, included of the planktonic organisms, reflects with high fidelity environmental changes, such as

fluctuations of seawater, salinity, temperature, sea-level changes, ocean productivity, nutrients and water pollution. The key role of the calcareous nannoplankton in reconstructing palaeoecological changes, in identifying global and regional environmental modifications and in advancing climatic predictions is argued (Melinte and Dobrinescu, 2004).

Paleotemperature interpretation in Kendeng Zone has been done by Choiriah (1999) using calcareous nannoplankton and Van Gorsel & Troelstra (1981) using plankton foraminifera. The results of his study showed different results. This is because it has a different lithostratigraphic

METHODS

Calcareous nannoplankton research requires only a small sample of sedimentary rock. The samples taken at certain distance intervals. The preparation technique uses the smear-slide method. This technique is a preparation technique that is very simple, easy and fast. Determination of the genus, species follows previous research by Martini (1971), Perch-Nielson, Nannotax3. The Nannoplankton zones follows of Martini (1971). Specimens were randomly counted using a grid pattern. The parameter used to interpret paleotemperature is the total number of:

- 1) Species (diversity)
- 2) Individual (abundance)
- 3) Species of Discoaster
- 4) Individual of Discoaster
- 5) *Discoaster pentaradiatus*
- 6) Form of Coccolith
- 7) Species of cold temperatures
- 8) Species of environmental characteristics with cold temperature
- 9) Species of environmental characteristics with transition temperatures
- 10) Species of environmental characteristics with warm temperature
- 11) Species that characterize the environment with warm temperatures
- 12) Individuals who characterize a warm temperature environment
- 13) Species ratio as indicator of cold environment

- 14) Species ratio as indicators of transition environment
- 15) Species ratio as indicators of warm environment

RESULT AND ANALYSIS

The lithostratigraphic nomenclature used in this study follows regional stratigraphy (Pringgoprawiro, 1983) (Figure 2).

Stratigraphy of Kedung Sumber section in this study area is composed Calcareous sandstone of Kalibeng Formation, Volcanic breccia unit of Atasangin Member, Limestone Unit of Klitik Formation, Calcareous sandstone of SOnde Formation, and Volcanic breccia Unit of Pucangan Formation (Figure 3).

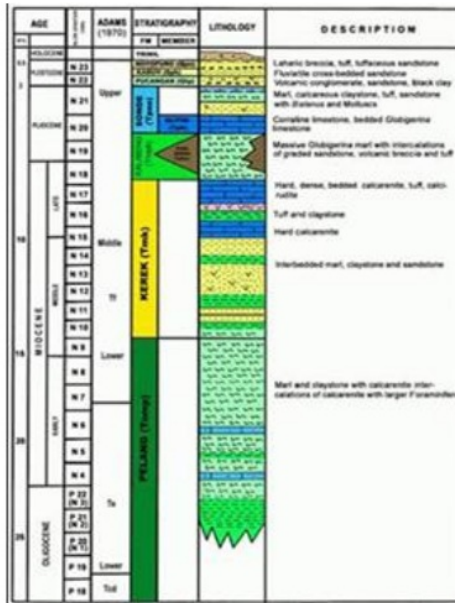


Figure 2. Regional Stratigraphi of Kendeng Zone (Pringgoprawiro, 1983)

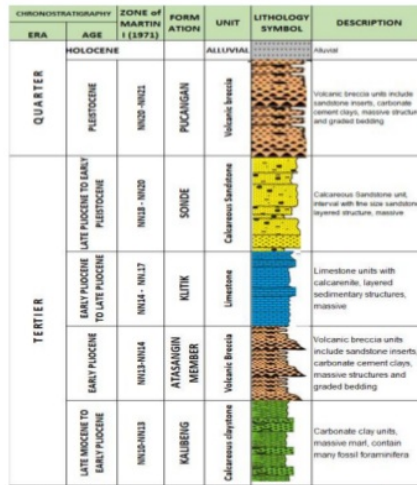


Figure 3. Stratigraphi of Kedung Sumber, Soka (Tim Research, 2016-2019)

Analysis of nannofossil found in the study area from a total of 64 samples of rock results in 11 genus and 32 species of nannofossil (Table 1)

PALEOTEMPERATURE INTERPRETATION

Interpretation of paleotemperature based on calcareous nannoplankton analysis divided into several factors or parameters, such as: (Figure 4)

1. Total of diversity, shows 21 zones of paleotemperature change zone, that is 8 cold zones, 8 transitional zones, and 5 warm zones.
2. Total of abundance indicated that 16 paleotemperature zones, that is 7 cold zones, 7 transitional zones, and 2 warm zones.
3. Amounts of species *discoaster*, shows there are 23 paleotemperature zones. This zone indicated 8 cold zones, 6 transitional zones, and 9 warm zones.
4. Total of individual *discoaster*, there are 22 paleotemperature zones, this zone are 9 cold zones, 5 transitional zones, and 8 warm zones.
5. Amounts of *Discoaster pentaradiatus*, shows there are 10 paleotemperature zones. This zone are 5 cold zones, 2 transitional zones, and 3 warm zones.

6. Amounts of individual coccolith forms (*Calcidiscus leptoporus*, *Coccolithus pelagicus*, *Gephyrocapsa caribbeanica*, *Gephyrocapsa oceanica*, *Helicosphaera carteri*, *Helicosphaera kamptneri*, and *Helicosphaera sellii*), indicated of 32 paleotemperature zones: 10 cold zones, 9 transitional zones, and 13 warm zones.
7. Amounts of species cold (*Coccolithus pelagicus*, *Discoaster intercalaris*, *Discoaster tamalis*, *Gephyrocapsa caribbeanica*, *Thoracosphaera saxea*), shows there are 29 paleotemperature zones, that is 6 cold zones, 11 transitional zones, and 12 warm zones.
8. Total of individual cold, indicated of 20 zones of paleotemperature: 6 cold zones, 6 transitional zones, 8 warm zones.
9. Amounts of species transitional (*Calcidiscus leptoporus*), because there is only one species is found, on this parameter divided into 3 transitional zones.
10. Total of individual transitional, because there is only one species and one individual was found, on this parameters divided into 3 transitional zones.
11. Total of species warm: *Ceratolithus rugosus*, *Discoaster asymmetricus*, *Discoaster blackstockae*, *Discoaster pentaradiatus*, *Gephyrocapsa oceanica*, *Rhabdosphaera clavigera*, indicated of 33 paleotemperature zones: 15 cold zones, 14 transitional zones, and 4 warm zones.
12. Total of individual warm, indicated of 32 paleotemperature zones, that is 14 cold zones, 8 transitional zones, and 10 warm zones.
13. Cold species Ratio indicated that 29 paleotemperature zones: 8 cold zones, 9 transitional zones, and 12 warm zones.
14. Transitional species Ratio indicates of 3 paleotemperature zones (2 transitional zones and 1 warm zone).
15. Warm species Ratio indicated of 33 paleotemperature zones, that is 14 cold zones, 10 transitional zones, and 9 warm zones.

Characteristics of each measure is interpretation paleotemperature changes

with a different color (Figure 4). The color differences are green is cold zone, the temperature is $<11^{\circ}\text{C}$, red color is transitional zone, the range of temperature is (11°C - 18°C), and the yellow color is warm zone, and range of temperature is (19°C - 30°C).

CONCLUSION

Based on all the factors or parameters produce a paleotemperature change into 32 temperature zones consisting of 13 cold zones, 8 transition zones, and 11 warm zones. Each factor of temperature change shows different interpretations of temperature changes.

Kalibeng Formation is Late Miocene to Early Pliocene (NN10-NN13), composed of 9 zones. The zones are: 1/warm, 2/cold, 3/transitional, 4/warm, 5/cold, 6/warm, 7/cold, 8/cold, 9/warm zone.

Atasangin Member is Early Pliocene (NN13-NN14) and composed of 3 zones: 10/cold, 11/warm, 12/cold zone. Age of Atasangin Member

Klitik Member is Early Pliocene to Late Pliocene (NN14-NN17), and divided to 7 zones. These zones are: 13/transitional, 14/warm, 15/cold, 16/warm, 17/cold, 18/warm zone.

Age of Sonde Formation is NN18-NN20 (Late Pliocene to Early Pleistocene), consists of seven zones. These zones are: 19/cold, 20/warm, 21/transitional, 22/cold, 23/transitional, 24/cold, 25/transitional, 26/cold, 27/transitional zone, 28/warm, 29/cold zone.

Pucangan Formation composed of 3 zones: 30/warm, 31/transitional, 32/cold zone. Age of thid formation is Pleistocene (NN20-NN21).

Acknowledgement

We would like to thank LPPM UPN "Veteran" Yogyakarta, Indonesia (for research foundation), PUPT Kendeng Team for helping in the field work, also thanks to Vian and Wawan that helped collect field data and the fossil analysis. Our thanks also go to Chair of Geological Engineering Department, FTM, UPN "Veteran" Yogyakarta for the support to our research.

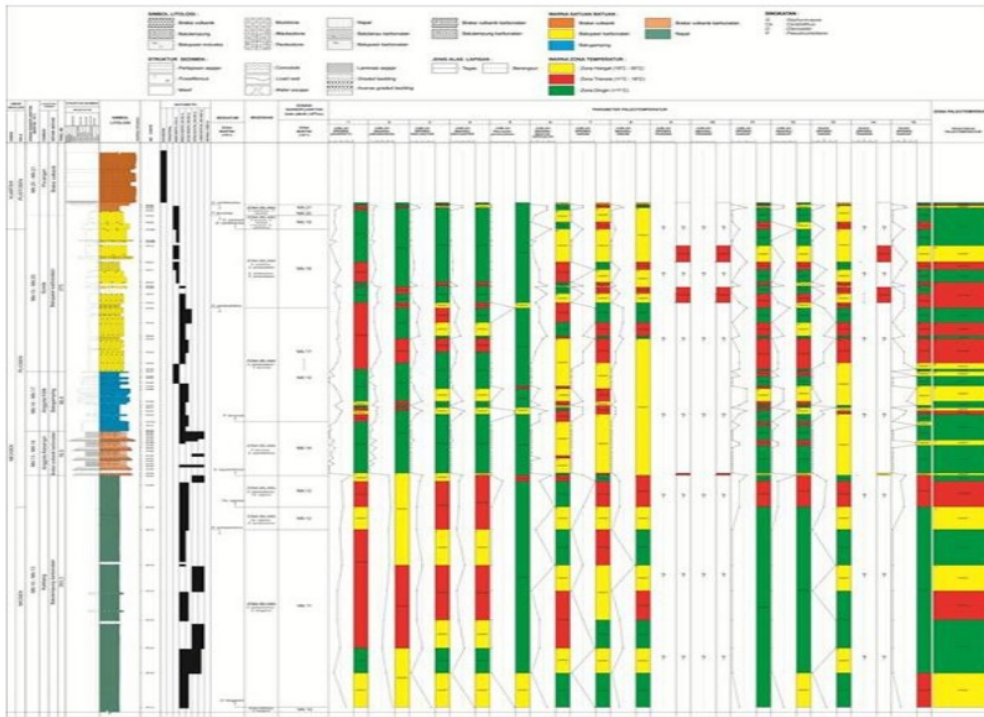
REFERENCES

Table 1. Data from nannoplankton analysis of the study area

No	Nama Spesies	Nomor Contoh Batuan LOKASI SOKO, BOJONEGORO																				
		KALIBENG		ANGGOTA ATAS ANGIN										KLITIK			SONDE FM.KLITIK				PUCANGAN	
		12	13	14	15	16	17	18	19	20	21											
1	<i>Caldicoccus leptopus</i>	w		R									R				R					
2	<i>Ceratolithus rugosus</i>	w	E	R														R				
3	<i>Coccolithus pelagicus</i>	w											F	F	F	F	F		R			
4	<i>Dicostella attus</i>	w											F	F	R	R						
5	<i>Dicostella asymmetricus</i>	w											F	F	R			F		R		
6	<i>Dicostella berggrenii</i> B	w																				
7	<i>Dicostella blackstockae</i>	w																				
8	<i>Dicostella braueri</i>	w	F	F	F								R	R	R							
9	<i>Dicostella intercalaris</i>	w																				
10	<i>Dicostella mendocobensis</i>	w																				
11	<i>Dicostella neoerectus</i>	w	E																			
12	<i>Dicostella pentaradiatus</i>	w																				
13	<i>Dicostella quinquearmus</i>	w																				
14	<i>Dicostella tamals</i>	w																				
15	<i>Gephyrocapsa caribbeanica</i>	w																			C F	
16	<i>Gephyrocapsa oceanica</i>	w																			R	
17	<i>Helicosphaera carteri</i>	w	E	R	F													F	F		F	
18	<i>Helicosphaera kamphneri</i>	w																			R	
19	<i>Helicosphaera salii</i>	w																			R	
20	<i>Pseudonella laonasa</i>	w																			R	
21	<i>Reticulofenestra haugi</i>	w																			R	
22	<i>Reticulofenestra minuta</i>	w	A	A	A		C	A									A	A	A	F	C	
23	<i>Reticulofenestra minutula</i>	w	A	A	A		C	A		F							A	A	A	C	C	
24	<i>Reticulofenestra pseudocumblicus</i>	w	F	C	F																C	
25	<i>Rhabdosphaera clavigera</i>	w																			C	
26	<i>Scyphosphaera globulata</i>	w																			C	
27	<i>Sphaerolithus abies</i>	w	A	A	A																C	
28	<i>Sphaerolithus moriformis</i>	w																			C	
29	<i>Sphaerolithus neobabes</i>	w	A	A	A		C														C	
30	<i>Thraosphaera abalrosiana</i>	w																			C	
31	<i>Thraosphaera halmi</i>	w																			C	
32	<i>Thraosphaera saxea</i>	w																			C	

■ : Index of Nannofossil
 VA = Very Abundant (over 10 specimens per field)
 A = Abundant (1-10 specimens per field of view)
 C = Common (one specimen per 2 to 10 fields of view)
 F = Few (one specimen per 11 to 100 fields of view)
 R = rare (1 to 2 specimens per slide)

Figure 4. Paleotemperature Interpretation of Kedung Sumber, Soko, Bojonegoro



Makalah untuk Seminar Nasional 16-17 Oktober 2019, LPPM, UPN "Veteran" Yogyakarta

Makalah untuk Seminar Nasional 16-17 Oktober 2019, LPPM, UPN "Veteran" Yogyakarta

PALEOTEMPERATURE INTERPRETATION BASED ON CALCAREOUS NANNOPLANKTON OF KEDUNG SUMBER RIVER SECTION, SOKO, BOJONEGORO, EAST JAVA

ORIGINALITY REPORT

3%

SIMILARITY INDEX

0%

INTERNET SOURCES

3%

PUBLICATIONS

0%

STUDENT PAPERS

MATCH ALL SOURCES (ONLY SELECTED SOURCE PRINTED)

2%

★ Juan P. Pérez Panera, Francisco J. Parra, Rosa E. Navarrete, Christian Sánchez, Diana Daza, Manuel Rodriguez, Mario Prince. "Chapter 3 Turonian–Santonian Calcareous Nannofossil Biozonation for La Luna Formation, Middle Magdalena Valley Basin, Northern Colombia", Springer Nature America, Inc, 2019

Publication

Exclude quotes Off

Exclude bibliography Off

Exclude matches Off