

Structure, Hydrogeology..

by Sari B Kusumayudha

Submission date: 23-Jan-2018 09:39AM (UTC+0700)

Submission ID: 905604342

File name: 3_ICWES15_Kusumayudha.pdf (2.27M)

Word count: 2915

Character count: 15608



[Introduction](#)
[Organising Committee](#)
[ICWES15 Reviewers](#)
[Sponsors](#)
[Search Papers](#)

Organising Committee

- Dr Marlene Kanga, Imm. Past Chair National Committee for Women in Engineering, National Vice President Engineers Australia (Co-chair Organising Committee)
- Ms Ha Do, Engineer, Hays Australia (Co-chair Organising Committee)
- Dr Rebecca Gravina, Senior Lecturer, Civil Engineering RMIT University (Co-chair Technical Program)
- Prof. Julie Mills, Prof & Program Director, Civil Engineering, University of South Australia (Co-chair Technical Program)
- Ms Gaye Francis, Director, RZA Pty Ltd (Treasurer)
- Ms Caroline Argent, Division Director, Engineers Australia SA
- Ms Catriona McAuliffe, Conference Manager, Engineers Australia
- Dr Sally Plush, Lecturer in Chemistry School of Pharmacy and Medical Sciences, UniSA
- Dr Tara Pukala, Chemistry Lecturer, School of Chemistry & Physics, University of Adelaide
- A/Prof Ann Roberts, Deputy Head of School of Physics, The University of Melbourne
- Ms. Michelle Shi-Verdaasdonk, Women in Engineering National Committee Chair (Sponsorship Coordinator)

ICWES15 Technical Committee Members

- Prof Julie Mills, Prof & Program Director, University of South Australia (Co-Chair)
- Dr Rebecca Gravina, RMIT University (Co-Chair)
- Ms Gunilla Burrowes, University of Newcastle
- A/Prof Margaret Jollands, RMIT University
- Dr Sally Male, University of Western Australia
- Ms Melissa Marinelli, Curtin University of Technology
- Dr Emma Parkinson-Lawrence, University of South Australia
- Dr Sally Plush, University of South Australia
- Dr Tara Pukala, University of Adelaide
- Ms Pam Roberts, Australian National University
- Ms Elizabeth Smith, University of South Australia
- Dr Delene Weber, University of South Australia

Conference Host



Proudly Supported by



Government of South Australia



ADELAIDE 19-22 JULY

www.icwes15.org

Published July 2011. Responsibility for the contents of these pages rest upon the authors and not Engineers Australia. Data presented and conclusion developed by the authors are for information only and are not intended for use without substantiating investigation on the part of the potential user.



[Introduction](#)
[Organising Committee](#)
[ICWES15 Reviewers](#)
[Sponsors](#)
[Search Papers](#)

ICWES15 List of Reviewers

- Maziar Arjomandi, University of Adelaide
- Mary Ayre, University of South Australia
- Suzelle Barrington, McGill University Canada
- Stephen Berry, University of South Australia
- Carla Boehl, Rio Tinto
- Gunilla Burrowes, University of Newcastle
- Michael Burton, University of Western Australia
- Daniela Ciancio, University of Western Australia
- Philip Clausen, University of Newcastle
- Paul Corcoran, University of South Australia
- Julie Culbert, SA Water
- Kathryn Davidson, University of South Australia
- James Doherty, University of Western Australia
- Judy Eastham, Curtin University
- Heike Ebendorff-Heidepriem, University of Adelaide
- Caecilia Ewenz, Flinders University
- Cathy Foley, CSIRO
- Caroline Forbes, University of Adelaide
- Kelly Foreman, University of South Australia
- Sheridan Gentili, University of South Australia
- Joan Gibbs, University of South Australia
- Judy Gill, University of South Australia
- Rebecca Gravina, RMIT University
- Darla Hatton McDonald, CSIRO
- Theresa Jefferson, Curtin University
- Margaret Jollands, RMIT University
- Lesley Jolly, Strategic Partnerships Research, Evaluation, Training and Community
- Jochen Kaempt, Flinders University
- Patricia Kelly, Higher Education Consultant
- Malgorzata Korolkiewicz, University of South Australia
- Barbara Koth, University of South Australia
- Julia Lamborn, Swinburne University
- Jeremy Leggoe, UWA
- Linley Lord, Curtin University
- Jennifer Macdonald, University of South Australia
- Sally Male, UWA
- Marc Mannelli, Bureau of Meteorology
- Melissa Marinelli, Curtin University
- Greg Metha, University of Adelaide
- Julie Mills, University of South Australia
- Ellen Nisbet, University of South Australia
- Carolyn Oldman, University of Western Australia
- Maazuza Othman, RMIT University
- Gary Owens, University of South Australia
- Sally Plush, University of South Australia
- Tara Pukala, University of Adelaide
- Mizanur Rahman, University of South Australia
- Chris Raymond, University of South Australia
- Christian Reynolds, University of South Australia
- Pam Roberts, Australian National University
- Chris Saunders, University of South Australia
- Tetyana Shandala, University of South Australia
- Rhonda Sharp, University of South Australia
- Bob Sharrad, Flinders University
- Elizabeth Smith, University of South Australia
- Jolanta Szymakowski, University of Western Australia
- Mark Toner, Toner & Associates Pty Ltd
- Anh Tran, University of South Australia
- James Ward, University of South Australia
- Clare Wasteneys, Queens University, Canada
- John Weber, University of South Australia
- KC Wong, Sydney University
- Song Zhang, University of South Australia

Conference Host



Proudly Supported by



Government of South Australia



ICWEST 15

AUSTRALIA 2011

AUTHOR INDEX

Isikwue, Bernadeth C	739	Kim, JunYoung	753
Iwabuchi, Yuhko	726	Kim, Sung-Soo	670
Iwakuma, Maki	532 708 756	Kim, Sungwhan	658
Jaain, Monicca	612	Kim, Sunme	312
Jackson, Shya	528	Kim, Taeyoun	650
Jang, Jaewoong	650	Kim, Woo Jeong	648
Jayasuriya, Niranjali	441	Kim, Woo-Jeong	649
Jeon, Moon-Jin	615	Kimura, Ryo	532 690 756
Ji, Na Young	671	King, Rudith S	345
Johnson, Laura	614	Kioni, Paul N	660
Jollands, Margaret	310	Kissho, Mizue Y	691
Jones, Lorie	513	Kline, Michael	356
Jung, Myung Hee	613	Knox, Sally A	354
Kaberere, Keren K	426	Koba, Alexandra	614
Kadiri, Medina O	645	Kong-Ju-Bock, Lee	423
Kagira, John M	656	Kongoro, Jedida A	605
Kahangi, Esther M	659	Kosoko, Adebowale O	451
Kaib, Manfred	667	Koth, Barbara	413
Kakota, Tasokwa VM	689	Kovalcuk, Tatiana V	626
Kakuda, Fedeko	708	Kubo, Nami	532 690 756
Kallis, Deon	408	Kucharska, Danuta J	733
Kalungu, Jokastah Wanzuu	646 731	Kumar, Ravinder	641
Kang, Sang Hun	653	Kusumayudha, Sari B	531 ✓
Kang, Taejin	658	Kwemesi, Anthony A	451
Kang, Yun Hee	671	Kwon, Dong-Young	615
Kanui, Mary Ng'endo	732	Kwon, Jang Hyuk	410
Kanyama-Phiri, George Y	657	Lake, Amanda	339
Kao, Nhol	668	Lamont, Miranda J	692
Karanja, Faith Njoki	330 416	Lane, Augusta	358
Karanja, Simon M	656	Lang'at Thoruwa, Caroline C	693
Kata, Lauren A	327	Laryea, Wilhelmina k	661
Kato, Maki	428	Layne, Peggy	352
Kentish, Sandra E	516	Lectercq, Séverine	734
Keraita, James	660	Lee, Ah-Reum	649
Khare, Manorama M	347 709	Lee, Chung Il	671
Khrutskaya, Hanna	710	Lee, Geumseon	658
Kim, Day-Young	615	Lee, Hee Gu	671
Kim, Deog-Keun	452	Lee, Hosun	651
Kim, Eunhee	722	Lee, Jin-Suk	452
Kim, Gyu-Sun	615	Lee, Jonghyun	312
Kim, Heeyeon	647	Lee, Na-Young	615
Kim, HyeYoung	753	Lee, Sookyeon	658
Kim, Hyong-Ha	648 649	Lee, Wonkyung	312
Kim, Jae Wha	671	Lee, Yang Ji	653
Kim, JiHye	753	Leggon, Cheryl B	523
Kim, Jung Sun	333 700	Leibnitz, Gretalyn M	348



LIST OF PAPERS

ENERGY, RESOURCES & ENVIRONMENTAL SCIENCE & TECHNOLOGY

COMPARISON OF SOLAR SORPTION COOLING SYSTEMS USING TRNSYS SOFTWARE
(Marie-Esther Guillem, Rebecca Selwyn, Hind Saidani-Scott)

KINGSGROVE TO REVESBY RAIL QUADRUPPLICATION – INNOVATIONS IN DESIGN AND
CONSTRUCTION OF THE OVERBRIDGES
(Gillian Sisk, Sally Cox, Naomi Stone)

TOWARDS A MORE SUSTAINABLE, RESILIENT INFRASTRUCTURE SYSTEM: REGIONAL RISK
ASSESSMENT OF COASTAL BRIDGES DURING HURRICANE EVENTS
(Candase D. Arnold, Jamie E. Padgett)

CHALLENGING DESIGN: FOUNDATIONS FOR TALL BUILDINGS
(Helen Chow, Frances Badelow)

ACCELERATED DRAINAGE IN SAND PILES BY SUCTION THROUGH CONVOLUTED
PERFORATED PIPE
(Eliza Hashemi, Muhammed A. Bhuiyan, Niranjali Jayasuriya)

RULES FOR THE PROVISION OF EARTHQUAKE RESISTANCE IN SMALL BUILDINGS IN GHANA
(C.D. Bou-Chedid)

THE PRODUCTION OF BIODIESEL FROM OILS AND FATS
(Ji-Yeon Park, Jin-Suk Lee, Deog-Keun Kim, You-Kwan Oh)

ENGINEERING SUSTAINABILITY – A SYSTEMS APPROACH
(Lorie Jones *FIEAust*, *CPEng*, *NPER*, Janine Barrow, Katie DeJong)

DEMONSTRATING CARBON DIOXIDE CAPTURE THROUGH PILOT PLANT OPERATION
(Clare J Anderson, Kathryn A Mumford, Kathryn H Smith, Sandra E Kentish, Abdul
Qader and Geoff W Stevens)

STRUCTURE, HYDROGEOLOGY, AND THE GEOTHERMAL SYSTEM OF MOUNT UNGARAN ✓
AREA, CENTRAL JAVA, INDONESIA
(Sari B. Kusumayudha, Andriyanto P. Markam, Basuki Rahmat)

BARELY SURVIVING OR TRAILBLAZING? PROFESSIONAL LIFE OF WOMEN ENGINEERS IN
SHIPBUILDING, MECHANICAL AND CONSTRUCTION INDUSTRIES IN TAIWAN
(Wen-Ling Hong)

²
**STRUCTURE, HYDROGEOLOGY, AND THE GEOTHERMAL
SYSTEM OF MOUNT UNGARAN AREA, CENTRAL JAVA,
INDONESIA**

Sari B. Kusumayudha¹, Andriyanto P. Markam², Basuki Rahmat³
UPN “Veteran” , Jl SWK 104 Yogyakarta, Indonesia.
Email: saribk@gmail.com

ABSTRACT

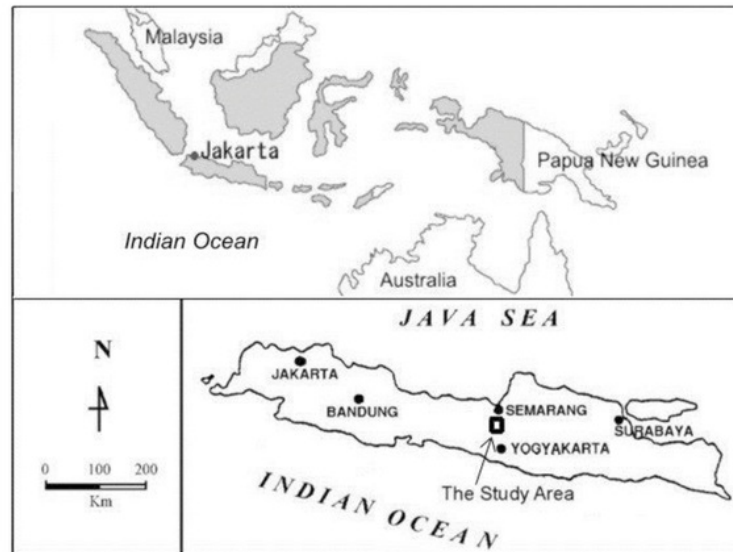
¹
Indonesia is well known as a country of volcanoes. There are hundreds active and dying volcanoes, one of which is namely Mount Ungaran. It is a Pleistocene age volcano, located in the Semarang region, Central Java Province. In the present time the volcano is identified being in its post volcanism stage. Some observable fact related to the stage of the volcano is there has been no more volcanic eruption record for a thousand year. In contrary, there exist fumaroles and sulfuric hot steam through fissure on the flank of the volcano. The geologic structures obtained at the surrounding area are reverse faults, strike slip faults, and normal faults. On the other hand, the hydrogeologic system is compiled of fractured complex aquifer system, containing volcanic breccias, sandstones, and lava deposits of andesitic to basaltic composition. Due to the high density of fractures, cracks, and faults, the aquifers are able to transmit surface water and groundwater down to contact with such hot plutonic bodies in the volcanic environment to perform geothermal system. This geothermal system is expressed by the occurrence of side and fissure sulfuric fumaroles eruption. Therefore it can be stated that structures and hydrogeologic condition play important role to the occurrence of the geothermal system in the study area.

Introduction

Mount Ungaran is located at Central Java province, belonging to the Semarang region, Indonesia. The volcano is Pleistocene (about 1 to 1.8 million years) age, and in post volcanism phase, indicated by the existence of fumaroles on its side vent. Ancient Mount Ungaran volcanism was the source of Notopuro Formation, comprises of andesitic to basaltic breccias, sandstones and agglomerates. Geothermal system is generally influenced by geologic structure, and hydrogeologic condition. Therefore, based on the rationales mentioned above, this paper is intended to assess the geologic structures and hydrogeologic condition those control the geothermal system of Mount Ungaran environment.

The area being studied is situated on the southeastern slope of Ungaran volcano, administratively belonging to the Semarang region, Central Java Province. It is astronomically bordered by 7°10'00" to 7°15'39" latitudes, and 110°22'30' to 110°28'32" longitudes, able to be reached from Semarang, the capital city of Central Java province, of about 27 km to the south, and from Yogyakarta about 70 km to the Northwest (Figure 1).

Method applied in order to complete the objectives of this study is geologic and hydrogeologic mapping, geologic structural and hydrochemistry analyses. Some rock and groundwater samples were taken for either in situ or laboratories testing.



5
Figure 1. The location map of the study area

Geology

Van Bemmelen (1949) divided the physiography of the Central Java into several zone, respectively from the north to the south are alluvial plain of Northern Java, North Serayu Anticlynorium, South Serayu Mountains, Central Depression and Quaternary Volcanoes Zone, and Southern Mountains. The study area that is situated on the southeastern slope of Mount Ungaran, physiographically includes in the North Serayu Mountains (Figure 2). The Ungaran volcano stands on the eastern most edge of uplifted mountains, and separates North Serayu Mountains in the west from Kendeng Ridge in the east (East Java). Both the North Serayu and Kendeng Mountains are folded ridges, built of predominantly plastic sedimentary rocks of Tertiary Neocene ages (Van Bemmelen, 1949). Because of occupying such foot slopes of a volcano, landforms in the study area are generally expressing hills and wavy planes.

The oldest lithology outcropped in the study area is Penyatan formation, comprises of andesitic breccias with lava interbedding, calcareous sandstones, and marl, Middle Miocene to Late Miocene ages (Van Bemmelen, 1949, Genevraye & Samuel 1972, Markam 1998). Penyatan Formation is unconformably overlain by Notopuro Formation. Notopuro formation consists of andesitic to basaltic breccias, lavas, volcanic sandstones, and tuff layers. The breccias were deposited by both laharic and pyroclastic mechanism. This volcanic formation at some locations was intruded by igneous rocks of either andesites or basalts. The age of Notopuro formation is Late Pliocene to Pleistocene (Van Bemmelen,

1949). The youngest lithology of the study area is alluvial deposits, consists of unconsolidated sediments of clay, granule, pebble, cobble, to boulder grain sizes. The alluvial have been produced from fluvial sedimentation of some rivers, such as River Panjang, River Garang, and River Santritlung.

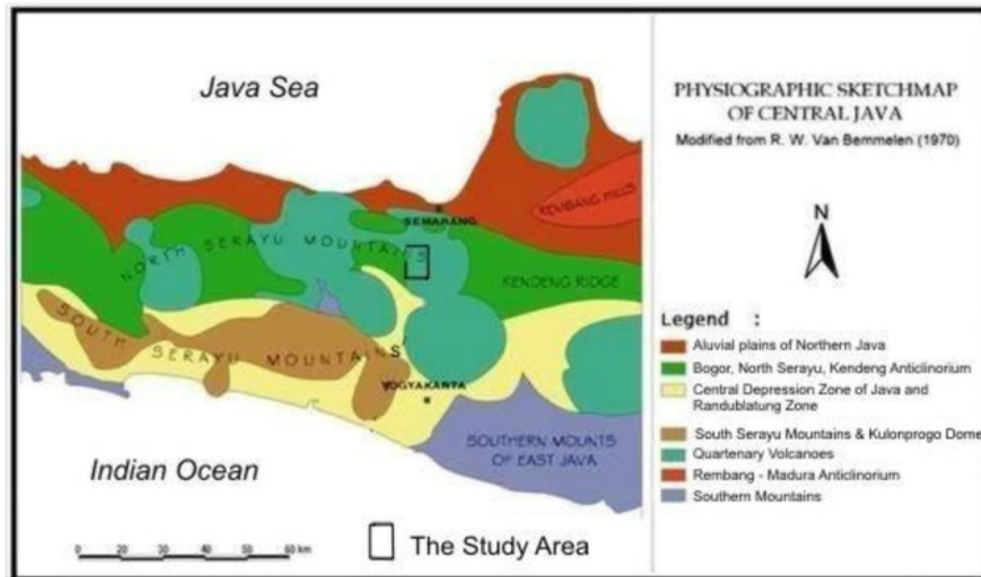


Figure 2. The Physiographic map of Central Java (Van Bemmelen, 1949)

Structural Geology and Hydrogeology

The study area shows a complex geologic structure of folds and faults. Formation of Tertiary period is strongly folded, while lithologic unit of Quaternary period is in general dissected by faults. In spite of being controlled by regional tectonic regime of Java island during Tertiary to Quaternary period, the geologic structures in the southeastern slope of Mount Ungaran is also influenced by local gravitational tectonic processes of Pleistocene to Holocene (Van Bemmelen, 1949). The Quaternary gravitational phenomenon created the collapse of Ungaran volcano, and reactivated some faults those already sliced the plastic formations underlain by the massive volcanic deposits of Notopuro Formation (Van Bemmelen, 1949).

Three great faults crosscutting the study area are the Ungaran reverse fault, Jimbaran normal fault, and Getas left strike slip fault. Beside the three faults, there are normal faults as the impact of gravity force with relatively north – south strikes. On the other hand the reverse fault is west – east strikes, and the left strike slip faults is northeast – southwest orientation. Fault type determination was done by using field data and joints analysis, referring to Rickard classification (Billing, 1979). Field data used to determine the classification of the faults are written in the Table 1, while the geologic condition of the study area can be seen in the Figure 3.

Table 1. Field supporting data to fault classification of the study area

Fault Name	Classification	Field Supporting Data
Getas Fault	Left strike slip fault	<ul style="list-style-type: none"> - Scarps along the Santritlung river - Fault breccias at river Santritlung, Begajah, and river Klampok - Lithologic offset, and shear & gash fractures
Jimbaran Fault	Normal fault	<ul style="list-style-type: none"> - Fault plane with slicken sides - Fault breccias, shear and gash fractures - Lithologic offset
Ungaran Fault	Reverse fault	<ul style="list-style-type: none"> - Fault plane with slicken sides - Scarps, water fall, and fault springs - Brecciated zones, - Lithologic offset, - Minor faults, and drag folds

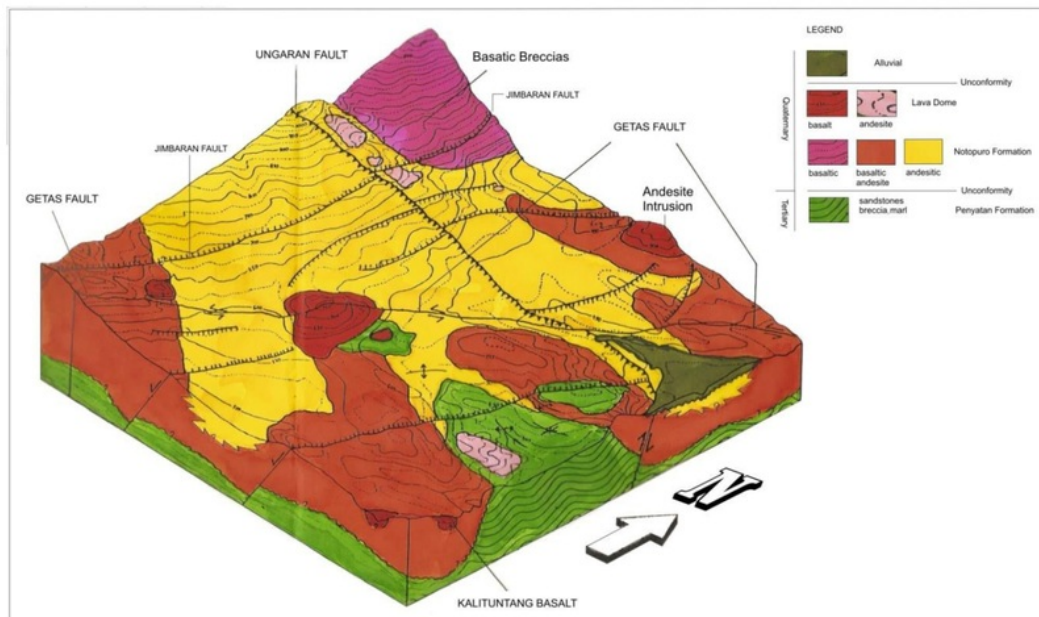


Figure 3. Geologic block diagram of the southeastern slope of Mount Ungaran (Markam, 1998 revised by Kusumayudha et.al, 2011)

There are some normal ring faults surrounding the cone of the volcano (Figure 4.). By the control of these faults, the summit part of Mount Ungaran was subjected to gravitational

subsidence (Van Bemmelen, 1949, Zen, 1969, vide Zen, et.al, 1983). Impact of this collapse, magma extruded out to the surface forming some lava domes around the summit of the volcano (Figure 5a.). Despite of the existence of ring faults, there are radial faults which play as the vent of side or flank eruptions. Up to now, fumaroles, sulfuric hot steam and geyser extrude from the flank vent as geothermal energy potency (Figure 5b.).

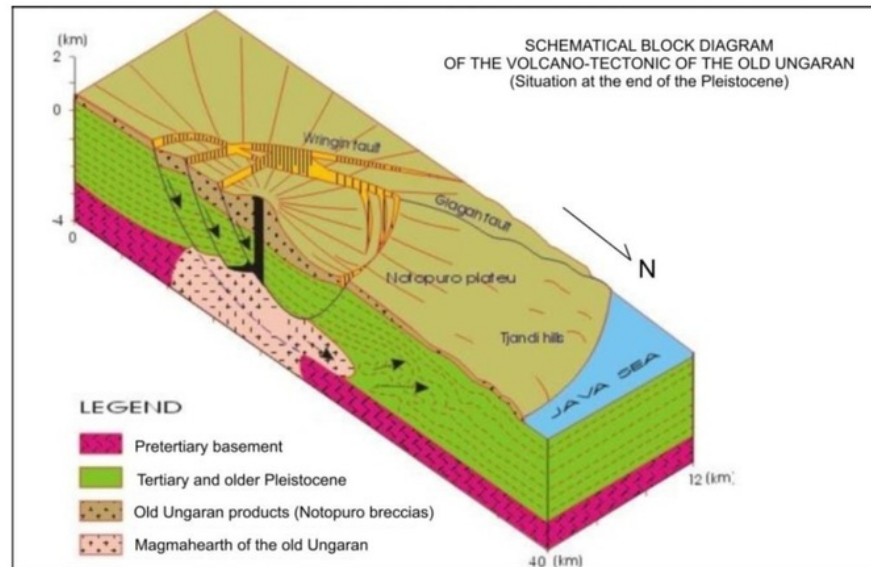


Figure 4. Schematic block diagram of Ungaran volcano–tectonic (Van Bemmelen, 1949)



Figure 5. a. Lava dome, b. Fomarole, at Gedongsongo, southern flank of Mount Ungaran

The hydrogeologic system of Ungaran area is built by aquifers comprises of volcanic deposits especially andesitic breccias, lava, and sandstone, predominantly forming fissure type of water bearing formation. In this system, Penyatan formation plays as the basement. Based on their stratigraphic position, Ungaran aquifers can be classified into unconfined and semi confined aquifers. Groundwater dynamics in the Ungaran aquifer is very complex, because it is conducted by crack and intergranular porosity systems combination. Under the hydraulic gradient, groundwater moves in general relatively from west to east direction by complex diffuse and cracked flow type.

Recharge zone occupies almost all parts, while the discharge zone lay on the eastern parts of the study area. There are many springs, and some of them are containing sulfur of moderately high concentration, and relatively high temperature. The existences of some hot and sulfuric springs show that the volcanism of Ungaran in the present time is progressing for post volcanism stage. Figure 6 displays the hydrogeologic conceptual model that is controlling the geothermal system of the southeastern slope of Mount Ungaran.

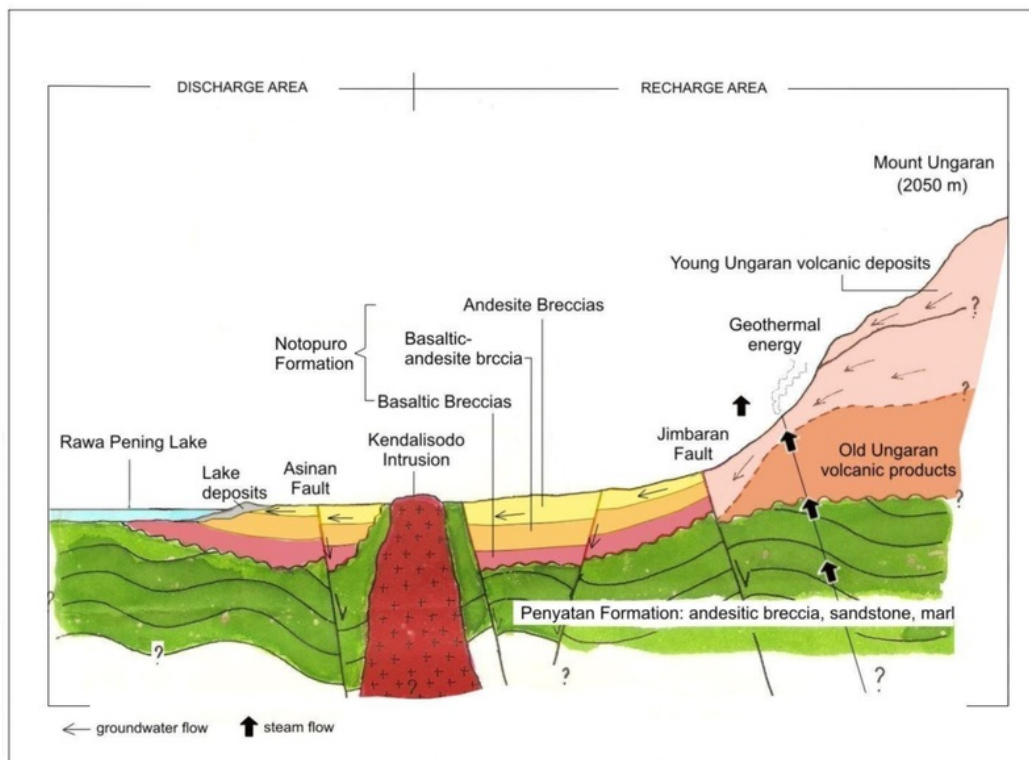


Figure 6. Hydrogeologic conceptual model of Mount Ungaran southeastern slope area (Markam ,1998 revised by Kusumayudha et.al, 2011)

The properties and groundwater chemistry of the aquifers are shown in the Table 2 and Table 3. The data were obtained from field measurements, field sampling, and laboratory testing. Result from hydrochemistry analysis using Aquachem software show that groundwater of Ungaran aquifer belongs to various water types. Based on cation content, it can be classified into calcium dominant water, on the other hand according to anion content the water includes in bicarbonate water, although some samples indicating chloride water (See Table 3 and Figure 7, the Piper plot of groundwater chemistry).

Table 2. Properties of the Ungaran aquifers

Hydraulic Conductivity (m/sec)	Transmissivity (m ² /sec)	Effective Porosity	Storage Coefficient
0.9 . 10 ⁻⁵ to 1.9.10 ⁻⁵	1.3.10 ⁻⁴ to 3.3.10 ⁻²	10% – 25%,	1.10 ³ to 1.7.10 ⁻¹

Table 3. Groundwater chemistry of the Ungaran aquifers

Sample ID	Location (Village)	Hydrochemistry Concentration (Mg/l)						Water Type
		Ca	Mg	Na	HCO ₃	SO ₄	Cl	
U1a	Jimbaran 1	56.12	14.59	27.59	256.25	19.21	14.18	Ca-Mg-Na-HCO ₃
U1b	Jimbaran 2	56.14	14.58	27.58	256.25	19.20	14.19	Ca-Mg-Na-HCO ₃
U2a	Karangjoho1	24.05	14.60	62.07	189.14	9.61	56.72	Na-Mg-Ca-HCO ₃ -Cl
U2b	Karangjoho 2	26.05	13.38	48.28	192.19	9.61	35.45	Na-Ca-Mg-HCO ₃ -Cl
U3	Pakopen	24.05	19.45	50.57	231.84	19.22	24.81	Na-Mg-Ca-HCO ₃
U4	Kalikembar	36.07	17.02	34.48	247.11	4.80	14.18	Ca-Na-Mg-HCO ₃
U5	Sruwen	76.15	13.37	29.89	317.26	19.20	10.64	Ca-Na-HCO ₃
U6	Coblong	26.05	13.38	20.69	167.78	9.60	7.09	Ca-Mg-Na-HCO ₃
U7a	Diwak 1	28.06	13.37	29.88	184.26	9.61	17.72	Ca-Na-Mg-Cl
U7b	Diwak 2	36.07	17.02	41.38	222.69	9.60	35.46	Ca-Na-Mg-HCO ₃ -Cl

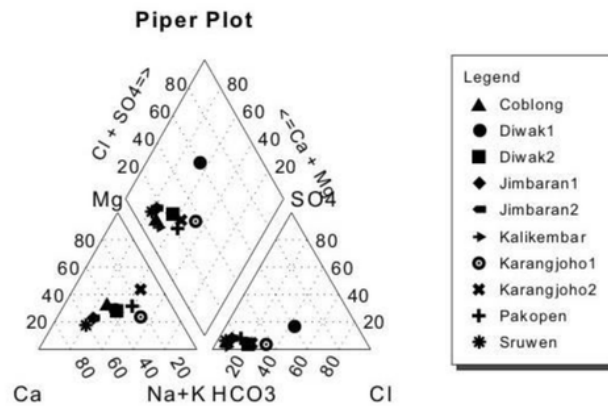


Figure 7. Piper diagram plot of groundwater samples of Ungaran aquifers

Geothermal System of Mount Ungaran

The earth anatomy from the outer to the inner is composed of crust, mantle, and core respectively. It owns and yields natural heat. Increase of the temperature layers with depth toward the earth core is called geothermal. The temperature of the geothermal has been resulted from heat residue of the initial earth material, and decay of radioactive compounds. The rate of the temperature change in the earth crust per km deep is known as geothermal gradient. Geothermal gradient causes the melting rocks to form such very hot and melted materials in the earth mantle. When hot and melted materials of the earth mantle rise to intrude the crust, it is called magma. If the magma extrude the surface, it becomes change its name to lava.

When water from the earth surface infiltrate subsurface penetrating soil layers reaching the saturated zones, it will forms groundwater. Due to high permeability of the rock formation and particular favorable condition, the groundwater will gravitate down to enter deeper formations, contact to such a high temperature rock body. The water then will be heated, changing its phase to be steam. When the surrounding rock formations are fissured intensively by joints and cracks, the condition will be able to function as a regulation for the steam out flowing from its traps. The steam mixed with such volcanic gases is potentially flushed up and out of the land surface, known as fumaroles that can be geothermal energy resource. The model of geothermal system is shown in the Figure 8 below.

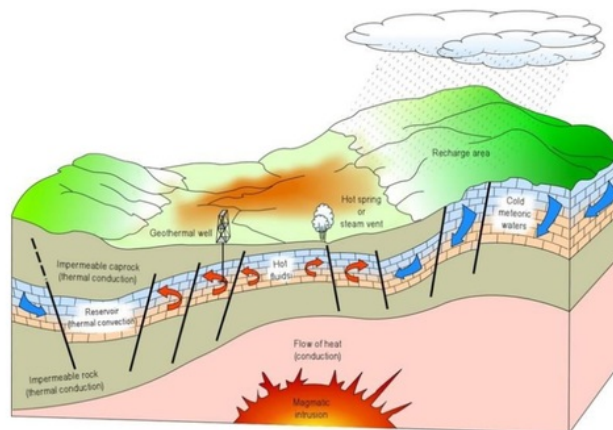


Figure 8. Geothermal system model (<http://www.indotoplist.com/info>)

On the south flank of Mount Ungaran, i.e. Gedongsongo area, there is fumarole through fissures, composed of water vapor and such gases as CO_2 , H_2S , H_2 , and CH_4 (Wahyudi, 2006), with temperature of about 85°C . Water samples taken from Gedongsongo in general show very low $\text{pH} < 4.0$. This high acidity of the water is caused by geochemical reaction of water with some gasses such as CO_2 , and Sulfur. Source of the erupted steam is groundwater in the hydrogeologic system of Ungaran volcano and surrounding area,

including the southeastern slope parts of the volcano which strongly controlled by cracks, fissures, and faults.

Due to the influence of geologic condition as has been discussed earlier, there are weak zones performed from the existence of reverse Ungaran Fault, strike slip Getas Fault, Jimbaran Fault, and other normal faults with all of their secondary order structures of joints and fractures. The weak zones cause the aquifer more permeable. The existence of such a caprock makes the steam accumulated, causing its volume and pressure increase. Lithology that able to function as a caprock is clay or marl. As it was mentioned above, there are marl layers in Penyatan formation. When there is crack system able to be the regulator, the steam will be sprayed out, known as fumaroles. The geothermal potency of Mount Ungaran is assumed to be sustainable, because it is supported by the relatively high precipitation in the surrounding area, i.e. 2,247 mm/year average (www.esdm.go.id).

Conclusion

Based on the analysis and assessment written above, the conclusions are as the following:

1. Geology of the study area is composed of Tertiary Penyatan Formation, unconformably overlain by Pliopleistocene Notopuro Formation. Penyatan Formation comprises of sandstone, breccias, and marl, Notopuro formation consists of andesitic to basaltic breccias, lavas, volcanic sandstones, and tuffs. The formations are intruded by andesites and basalts.
2. Geologic structures in the study area are folds and faults. The folds exist in Penyatan Formation, while the faults cut up Notopuro Formation. The three main faults are Ungaran reverse fault, Getas left strike slip fault, and Jimbaran normal fault.
3. The hydrogeologic system of the Ungaran southeastern slope is built of complex fissures aquifer system composed of volcanic rocks of Mount Ungaran. Types of groundwater are variation of Ca-Mg-Na-HCO₃, Na-Ca-Mg-HCO₃-Cl, Ca-Na-HCO₃, and Ca-Na-Mg-Cl. The structural hydrogeologic system let groundwater of the surrounding area to contact with magmatic and plutonic bodies of the volcanic environments to perform geothermal system.
4. The geothermal system of Mount Ungaran southeastern slope is expressed as flank and fissure fumaroles eruption. The fumaroles consist of water vapor, CO₂, H₂S, H₂, and CH₄ with 85°C temperature.

References

- Billing, M.P., 1979, *Structural Geology*, 3rd ed., Prentice Hall of India, New Delhi, 606 p
- Budiardjo, B., Nugroho M, Budihardi, 1997, Resource Characteristics of the Ungaran Field, Central Java Indonesia, *Proc. Seminar of Human Resources of Indonesian Geologists*, UPN "Veteran" Yogyakarta, p9
- Domenico, P. A. & Schwartz, F. W., 1990, *Physical and Chemical Hydrogeology*, John Wiley and Sons
- Freeze, R. A. & Cherry, J. A., 1979, *Groundwater*, Prentice Hall Inc, Englewood Cliffs, New Jersey, 604 p.

- Hem, J. D., 1985, *Study and Interpretation of the Chemical Characteristics of Natural Water*, USGS Water Supply Paper 2254
- Kusumayudha, S. B., 1993, *Groundwater Geochemistry of Mount Merapi's Southern Slope Area, Java, Indonesia*, Master of Science Thesis, AIT, Bangkok, unpublished, 239 p.
- Kusumayudha, S.B. & Pratiknyo P., 2001, Detecting the existence of groundwater discharge in the fractured volcanic area. *Majalah Geologi Indonesia*, Vol 16 No 2, p 83 - 91
- Markam, A. P., 1998, “*Geologi dan Studi Aplikasi Sistem Informasi Hidrogeologi pada Endapan Vulkanik Kuartir Sistem Akifer Ungaran daerah Jimbaran – Ungaran dan Sekitarnya, Kecamatan Ungaran, Kabupaten Semarang, Jawa Tengah – Indonesia*”, Thesis, UPN “Veteran” Yogyakarta, Unpublished, 206 p.
- Matthess, G., 1982, *The Properties of Groundwater*, John Wiley & Sons Publishers, New York, 406 p.
- Pertamina, 1976, “*Stratigrafi Zona Bogor – Serayu Utara Daerah Semarang Baratdaya Jawa Tengah*”, Divisi Eksplorasi Migas, Jakarta, Indonesia, unpublished, 45 p.
- Samuel, L. & Genevraye, 1972, Geology of the Kendemg Zone (Central and East java), *Proc. 1st Annual Convention of IPA*, Jakarta, Indonesia,
- Samuel L., Yanto, R., Sumantri, Fx, Suyanto, Sudiono, A., Syhbudin, A., 1995, *Indonesia Geothermal Reserves and Resources*, Pertamina, Jakarta, 45 p
- Todd, D.K., 1980, *Groundwater Hydrology*, 2nd edition, John Wiley & Sons, New York., 535 p.
- Van Bemmelen, R.W., 1949, *The Geology of Indonesia*, Vol IA, Martinus Nijhoff, The Hague, 792 p.
- Wahyudi, 2006, “Kajian Potensi panasbumi dan rekomendasi Pemanfaatannya pada daerah Prospek Gunungapi Ungaran, Jawa Tengah, Berkala MIPA, Vol 16 (1), Januari 2006, p 41 - 48
- Zen, M. T., M.A. Syarif, S.H. Simatupang, G. Yuniarto, 1983, Tektogenesa Gaya Berat dan Daur Magma Sepanjang Deretan Gunungapi Ungaran – Merapi di Jawa Tengah, *Proc IAGI Annual Convention*, Yogyakarta p 76 - 85

<http://www.esdm.go.id>

<http://www.indotoplist.com/info>

<http://www.volcano.si.edu/world/volcano>

Structure, Hydrogeology..

ORIGINALITY REPORT

11 %	11 %	1 %	1 %
SIMILARITY INDEX	INTERNET SOURCES	PUBLICATIONS	STUDENT PAPERS

PRIMARY SOURCES

1	www.icwes15.org Internet Source	9 %
2	docplayer.net Internet Source	1 %
3	G. Panagopoulos. "Application of major and trace elements as well as boron isotopes for tracing hydrochemical processes: the case of Trifilia coastal karst aquifer, Greece", <i>Environmental Geology</i> , 10/25/2008 Publication	1 %
4	www.territorystories.nt.gov.au Internet Source	<1 %
5	Davyda Hammond. "In-Vehicle Measurement of Ultrafine Particles on Compressed Natural gas, Conventional Diesel, and Oxidation-Catalyst Diesel Heavy-Duty Transit Buses", <i>Environmental Monitoring and Assessment</i> , 06/01/2006 Publication	<1 %

Krishnaraj Srinivasamoorthy. "Assessment of

6

groundwater quality with special emphasis on fluoride contamination in crystalline bed rock aquifers of Mettur region, Tamilnadu, India", Arabian Journal of Geosciences, 06/03/2010

Publication

<1%

7

scd-theses.u-strasbg.fr

Internet Source

<1%

Exclude quotes Off

Exclude matches < 5 words

Exclude bibliography On