

Fissure Structure

by Kusumayudha Sari Bahagiarti

Submission date: 22-Jan-2019 10:13AM (UTC+0700)

Submission ID: 1066840927

File name: IJHST_Vol_8_No_2_2018_Kusumayudha.pdf (1.24M)

Word count: 5863

Character count: 33217

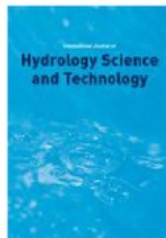
**LOG IN**

For Authors, Editors, Board Members

Username  Remember me[Forgotten?](#)[Home](#)[For Authors](#)[For Librarians](#)[Orders](#)[Inderscience Online](#)[News](#)Article search [Home](#) > [International Journal of Hydrology Science and Technology](#)

International Journal of Hydrology Science and Technology

This journal also publishes Open Access articles



Editor in Chief: Prof. Saeid Eslamian
ISSN online: 2042-7816
ISSN print: 2042-7808
 4 issues per year
 Subscription price

[Calls for papers](#)

IJHST is a peer-reviewed international journal covering research and practical studies on hydrological science, technology, water resources and related topics including water, air and soil pollution and hazardous waste issues. *IJHST* was initiated to communicate ideas, findings, methods, techniques or summaries of interesting projects or investigations in the area of hydrology.

[Sign up for new issue alerts](#)
[Subscribe/buy articles/issues](#)
[View sample issue](#)
[Latest issue contents](#)
[Forthcoming articles](#)
[Journal information in easy print format \(PDF\)](#)

[Publishing with Inderscience: ethical guidelines \(PDF\)](#)
[View all calls for papers](#)
[Recommend to a librarian](#)
[Feedback to Editor](#)

[Find related journals](#)
[Find articles and other searches](#)

[About this journal](#)[Editorial Board](#)[Submitting articles](#)

Topics covered include

- Dams and modelling reservoir operations
- Geostatistics, groundwater modelling
- Climate change and variability
- Eco-hydrology and hydro-ecology
- Environmental hydrology and hydraulics
- Flood and drought regionalisation and control
- Rain, evapotranspiration and wind analysis
- Remote sensing, GIS and data analysis
- River and sediment engineering
- Urban, surface, snow and karst hydrology
- Water distribution networks; irrigation, drainage and water deficit
- Water resources engineering and best management practices
- Water policy, economics and scarcity
- Water use and consumption; water reuse and wetlands
- Water, soil and air quality and pollution

[More on this journal...](#)

Browse issues

[Vol. 8](#)
[Vol. 7](#)
[Vol. 6](#)
[Vol. 5](#)
[Vol. 4](#)
[Vol. 3](#)

[More volumes...](#)[Get Permission](#)[More on permissions](#)

IJHST is indexed in:

- Scopus (Elsevier)
- Academic OneFile (Gale)
- AGRICOLA (National Agricultural Library)
- CAB Abstracts - Agriculture and International Development Indexes
- CAB Animal Sciences

[More indexes...](#)

IJHST is listed in:

- JUFO
- Norwegian Register for Scientific Journals, Series and Publishers

Keep up-to-date

[Our Blog](#)
[Follow us on Twitter](#)
[Visit us on Facebook](#)
[Join us on Google+](#)
[Our Newsletter \(subscribe for free\)](#)
[RSS Feeds](#)
[New issue alerts](#)

[SHARE](#)

Journal news

International Journal of Hydrology Science and Technology increases issues

The [International Journal of Hydrology Science and Technology](#) has announced that it will be increasing issues from four to six from 2019 onwards.

[Contact us](#) | [About Inderscience](#) | [OAI Repository](#) | [Privacy and Cookies Statement](#) | [Terms and Conditions](#) | © 2018 Inderscience Enterprises Ltd.



LOG IN

For Authors, Editors, Board Members

Username

 Remember me

Forgotten?

[Home](#)[For Authors](#)[For Librarians](#)[Orders](#)[Inderscience Online](#)[News](#)

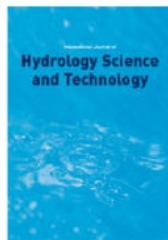
Article search

Go

[Home](#) > [International Journal of Hydrology Science and Technology](#)

International Journal of Hydrology Science and Technology

This journal also publishes Open Access articles



Editor in Chief: Prof. Saeid Eslamian
ISSN online: 2042-7816
ISSN print: 2042-7808
 4 issues per year
 Subscription price

[Calls for papers](#)

IJHST is a peer-reviewed international journal covering research and practical studies on hydrological science, technology, water resources and related topics including water, air and soil pollution and hazardous waste issues. *IJHST* was created to communicate ideas, findings, methods, techniques or summaries of interesting projects or investigations in the area of hydrology.

[About this journal](#)[Editorial Board](#)[Submitting articles](#)

Editor in Chief

Eslamian, Saeid, Isfahan University of Technology, Iran
 (ijh.res@gmail.com)

Advisory Board

Al-Turbak, Abdulaziz S., King Saud University, Saudi Arabia
 Bonacci, Ognjen, University of Split, Croatia
 Boynagryan, Vladimir, Yerevan State University, Armenia
 Cassardo, Claudio, University of Torino, Italy
 Chen, Bang-Fuh, National Sun Yat-sen University, Taiwan
 Dac, Nguyen Tat, Sub-Institute for Water Resources Planning (SIWRP), Vietnam
 Elshorbagy, Amin A., University of Saskatchewan, Canada
 Gambolati, Giuseppe, Università degli Studi di Padova, Italy
 Ghidaoui, Mohamed, Hong Kong University of Science and Technology, Hong Kong SAR, China
 Herrera, Ismael, National University of Mexico (UNAM), Mexico
 Khan, Shahbaz, Charles Sturt University, Australia
 Latif, Muhammad, University of Engineering and Technology, Pakistan
 Lundqvist, Jan, Linköping University, Sweden
 Lyberatos, Gerasimos, National Technical University of Athens, Greece
 Manopimoke, Supachit, Ritsumeikan Asia Pacific University, Japan
 McDonnell, Jeffrey, University of Saskatchewan, Canada
 Miller, Norman L., E.O. Lawrence Berkeley National Laboratory, USA
 Murad, Ahmed Ali Abdalla, United Arab Emirates University, United Arab Emirates
 Mutua, Francis M., University of Nairobi, Kenya
 Naidu, Ravi, University of South Australia, Australia
 Nicolas, Kalogerakis, Technical University of Crete, Greece
 Pagliara, Stefano, Università di Pisa, Italy
 Papanastasiou, Panos, University of Cyprus, Cyprus
 Radic, Zoran M., University of Belgrade, Yugoslavia
 Rashed, Muhammad Al, Kuwait Institute for Scientific Research, Kuwait
 Scarpati, Olga Eugenia, La Plata National University, Argentina
 Sahattin, Incecik, Istanbul Technical University, Turkey
 Stanawi, Muhammad Rashid, University of Jordan, Jordan
 Szkel, Leszek, Polish Academy of Sciences, Poland

29

[Sign up for new issue alerts](#)
[Subscribe/buy articles/issues](#)
[View sample issue](#)
[Latest issue contents](#)
[Forthcoming articles](#)
[Journal information in easy print format \(PDF\)](#)

[Publishing with Inderscience: ethical guidelines \(PDF\)](#)

[View all calls for papers](#)
[Recommend to a librarian](#)
[Feedback to Editor](#)

[Find related journals](#)[Find articles and other searches](#)

Keep up-to-date

[Our Blog](#)[Follow us on Twitter](#)[Visit us on Facebook](#)[Join us on Google+](#)[Our Newsletter \(subscribe for free\)](#)[RSS Feeds](#)[New issue alerts](#)

1
Szolgay, Jan, Slovak University of Technology, Slovakia

Wang, Zhao-Yin, Tsinghua University, China

Editorial Board Members

Ahmed, Shakeel, National Geophysical Research Institute (N.G.R.I.), India

Bardsley, Earl, University of Waikato, New Zealand

Cheng, Alexander H.-D., University of Mississippi, USA

Conacher, Arthur, University of Western Australia, Australia

Di Baldassarre, Giuliano, UNESCO-IHE Institute for Water Education, Netherlands

Diersch, Hans-Jorg G., DHI-WASY GmbH, Germany

Dupont, R. Ryan, Utah State University, USA

Dvinskikh, Svetlana Aleksandrovna, Perm State University, Russian Federation

Gomez-Hernandez, Jaime, Universidad Politécnica de Valencia, Spain

Grismer, Mark E., University of California, USA

Gupta, Ashim Das, Asian Institute of Technology, Thailand

Howard, Ken W.F., University of Toronto at Scarborough, Canada

Khanbilvardi, Reza M., City University of New York, USA

Klove, Bjorn, University of Oulu, Finland

Kovar, Pavel, Czech University of Life Sciences Prague, Czech Republic

Kowalczak, Piotr, Institute of Meteorology and Water Management, Poland

Kroiss, Helmut, Vienna University of Technology, Austria

Lazaridou-Dimitriadou, Maria, Aristotle University, Greece

McCuen, Richard H., University of Maryland, USA

McKay, Jennifer, University of South Australia, Australia

Meddi, Mohamed, Higher National School of Hydraulics, Algeria

Miyazaki, Tsuyoshi, University of Tokyo, Japan

Ong, Say Leong, National University of Singapore, Singapore

Patzek, Tadeusz W., University of California, USA

Persson, Kenneth M, Lund University, Sweden

Razack, Moutaz, University of Poitiers, France

Sherif, Mohsen Morad, United Arab Emirates University, United Arab Emirates

Shui, Lee Teang, Universiti Putra Malaysia, Malaysia

Singh, Vijay P., Texas A&M University, USA

Staufner, Fritz, ETH Zürich, Switzerland

Szidarovszky, Ferenc, University of Arizona, USA

Tan, Yih-Chi, National Taiwan University, Taiwan

Tulipano, Luigi, Sapienza - Università di Roma, Italy

Vairavamoorthy, Kalanithy, University of Birmingham, UK

Vogel, Richard M., Tufts University, USA

White, Ian, Australian National University, Australia

Xia, Jun, Chinese Academy of Sciences, China

Journal news

International Journal of Hydrology Science and Technology increases issues

The International Journal of Hydrology Science and Technology has announced that it will be increasing issues from four to six from 2019 onwards.

LOG IN

For Authors, Editors, Board Members

Username

 Remember me[Forgotten?](#)[Home](#)[For Authors](#)[For Librarians](#)[Orders](#)[Inderscience Online](#)[News](#)

Article search

[Home](#) > [International Journal of Hydrology Science and Technology](#) > 2018 Vol. 8 No. 2[Browse issues](#)

[Vol. 8](#)
[Vol. 7](#)
[Vol. 6](#)
[Vol. 5](#)
[Vol. 4](#)
[Vol. 3](#)
[Vol. 2](#)
[Vol. 1](#)

International Journal of Hydrology Science and Technology

2018 Vol. 8 No. 2

Pages Title and authors

Pages	Title and authors
105-119	Surfing safe waves: integration of water quality modelling in the evaluation of potential health risks Rita Marteleira; Pedro Bicudo; António Guerreiro De Brito; Pedro Santos Coelho DOI: 10.1504/IJHST.2018.10011524
120-133	Hydrological modelling of upper Ebonyi watershed using the SWAT model E. L. Ndulue; G. I. Ezenne; C. C. Mbajorgu; V. Ogwo; K. N. Ogbu DOI: 10.1504/IJHST.2018.10011526
134-147	Evaluation of some probability distribution functions for derivation of unit hydrograph in the Bar Watershed, Iran Seyed Amir Naghibi; Mehdi Vafakhah; Alireza Moghaddam Nia; Saeid Eslamian DOI: 10.1504/IJHST.2018.10011520
148-162	Fissure structure analysis to unravel groundwater inflow problem in gold mining site of Pongkor area, West Java, Indonesia Sari Bahagiarti Kusumayudha; Puji Pratiknyo; Purwanto; Herry Riswandi; Ayu Narwastu Ciptahening; Nenden Hermawanti DOI: 10.1504/IJHST.2018.10011527
163-174	Termination of evapotranspiration for cotton in Alabama by the Penman method Mahbub Hasan; Aschalew Kassu; Srinivasa Rao Mentreddy DOI: 10.1504/IJHST.2018.10011528
175-189	Artificial photocatalytic detoxification using immobilised titanium oxide: a cost-effective tertiary treatment method for decentralised wastewater effluents Mohammed Matouq; Daed Dabbas; Bassim Abbassi DOI: 10.1504/IJHST.2018.10011529
190-208	Treatment of world's largest and extensively hydrocarbon polluted environment: experimental approach and feasibility analysis Yohannes Yihdego; Radwan A. Al-Weshah DOI: 10.1504/IJHST.2018.10006087

[Sign up for new issue alerts](#)[Subscribe/buy articles/issues](#)[View sample issue](#)[Latest issue contents](#)[Forthcoming articles](#)[Journal information in](#)[easy print format \(PDF\)](#)[Publishing with Inderscience: ethical guidelines \(pdf\)](#)[View all calls for papers](#)[Recommend to a librarian](#)[Feedback to Editor](#)[Find related journals](#)[Find articles and other searches](#)

Keep up-to-date

[Our Blog](#)[Follow us on Twitter](#)[Visit us on Facebook](#)[Join us on Google+](#)[Our Newsletter \(subscribe for free\)](#)[RSS Feeds](#)[New issue alerts](#)[SHARE](#)

4

[Contact us](#) | [About Inderscience](#) | [OAI Repository](#) | [Privacy and Cookies Statement](#) | [Terms and Conditions](#) | © 2018 Inderscience Enterprises Ltd.

Fissure structure analysis to unravel groundwater inflow problem in gold mining site of Pongkor area, West Java, Indonesia

Sari Bahagiarti Kusumayudha*, Puji Pratiknyo,
Purwanto and Herry Riswandi

14
Geology Department,
Faculty of Mineral Technology,
Universitas Pembangunan Nasional 'Veteran' Yogyakarta,
Jl SWK 104, Condongcatur, Yogyakarta, Indonesia
Email: saribk@upnyk.ac.id
Email: puji_pratiknyoupn@yahoo.com
Email: purwantogeotek@yahoo.co.id
Email: herry.riswandi@upnyk.ac.id
*Corresponding author

Ayu Narwastu Ciptahening

1
Disaster Management Department,
Faculty of Mineral Technology,
Universitas Pembangunan Nasional 'Veteran' Yogyakarta,
Jl SWK 104, Condongcatur, Yogyakarta, Indonesia
Email: ayunarwastu@yahoo.com

Nenden Hermawanti

1
P.T. Freeport Indonesia,
Jl Mapuru Jaya Timika, Papua, Indonesia
Email: Nenden_hermawanti@icloud.com

1
Abstract: Hydrogeology of Pongkor area, West Java, Indonesia is characterised by fractured aquifer system. The aquifer consists of volcanic rocks of tertiary period, namely Cimapag formation. It is fractured with orientations axis of the fracture patterns are northwest – southeast and northeast – southwest. Pongkor area is drained by two main surface streams, called River Cikaniki and river Cimaja, normally flowing northward direction. In the study area, there is such a vein structure known as Vein Ciurug containing gold ore deposits. The vein is exploited by subsurface tunnelling system. During expansion of the mining activity, some ramps were needed to be constructed. When a ramp at the altitude of +484 m above sea level was expanded, before reaching the vein, the drilling penetrated a saturated zone, causing groundwater inflow with a relatively massive rate. Further, static groundwater flow flooded the opening ramp down with water level of +499 m above sea level, resulted in disruption of mining activities at the ramps under the elevation 500 m above sea level. This study is to analyse the source of groundwater inflow and set a recommendation to solve the problem.

¹
Keywords: fractured aquifer system; surface flow; tunnel inflow; mining problem; Indonesia.

⁸
Reference to this paper should be made as follows: Kusumayudha, S.B., Pratiknyo, P., Purwanto, Riswandi, H., Ciptahening, A.N. and Hermawanti, N. (2018) 'Fissure structure analysis to unravel groundwater inflow problem in gold mining site of Pongkor area, West Java, Indonesia', *Int. J. Hydrology Science and Technology*, Vol. 8, No. 2, pp.148–162.

Biographical notes: Sari Bal³iarti Kusumayudha is a Professor of Hydrogeology at the Geological Engineering Department, Faculty of Mineral Technology, UPN 'Veteran' Yogyakarta. She made many publications related to the field of hydrogeology, karst hydrogeology, engineering geology and geological disasters in various conferences, scientific journals both in Indonesia and international. Some popular scientific books and reference books on fractal analysis for hydrogeologic exploration, fractal analysis for earthquake and tsunami mitigation, hydrogeology, karst hydrogeology, surface water, active volcanoes, and Merapi Volcano of Indonesia have also been written by her.

³
Puji Pratiknyo is a Lecturer and Researcher in the Geological Engineering Department Faculty of Mineral Technology, UPN 'Veteran' Yogyakarta in the field of hydrogeology. He is actively doing research and community services especially in the field of hydrogeology. His publications are especially related to hydrogeology science and technology.

³
Purwanto is a Lecturer and Researcher at the Geological Engineering Department, Faculty of Mineral Technology, UPN 'Veteran' Yogyakarta in the field of engineering geology. His research activities are especially related to geotechnical engineering, exploration geology, and hydrogeology. Currently, he is pursuing further studies for doctoral program in engineering geology.

³
Herry Riswandi is a Lecturer and Researcher in the Geological Engineering Department, Faculty of Mineral Technology, UPN 'Veteran' Yogyakarta. His field of study is hydrogeology and geological exploration. He is active in doing research in the field of hydrogeology and geological exploration. Currently, he has advanced his study for doctoral program in hydrogeology.

³
Ayu Narwastu Ciptahening is a Teaching Staff and ³earch Assistant at the Disaster Management Study Program, Environmental Engineering Department, Faculty of Mineral Technology, UPN 'Veteran' Yogyakarta. She made lots of research activities and community services in the field of engineering geology, geotechnical engineering, geological exploration for avalanches, dams, and disaster management. She also actively participates in various seminars and workshops on engineering geology and disaster risk reduction.

²²
Nenden Hermawanti is an alumnus of the Department of Geological Engineering Faculty of Mineral Technology, UPN 'Veteran' Yogyakarta who is currently working as an Exploration Geologist in P.T. Freeport Indonesia. She is active in research on geological exploration.

1 Introduction

In the Pongkor area, Bogor regency, West Java province, Java Island, Indonesia, there is a gold mining, operated by applying underground excavation system. There is a huge potential quartz vein containing gold ores, namely Vein Ciurug that is one of the main sources of the gold mining. Unfortunately, such a hydrogeological problem occurred in the tunnel environment, disrupting subsurface engineering construction, and inhibiting mineral exploitation activities. According to Sudharto et al. (2010), at the time of tunnel construction to take the ore, there was water flowing out from such a water saturated zone. When the ramp at elevation +484 m asl was advanced to cross cut Vein Ciurug, before reaching the vein, the drilling penetrated a water saturated zone, which then a large amount of groundwater ingress to the tunnel (Gautama et al., 2010). Furthermore, static groundwater flow floods the ramp down about 350 m long with water level +499 m asl, causing problems in mining activities at the site under +500 m asl (Gautama et al., 2010).

27

Figure 1 Location map of the study area, Bogor regency, West Java, Indonesia (see online version for colours)



The mining authority tried to drain by pumping the water out, but this countermeasure was not significantly help the progress of mining activity at that site. A hydrogeological study around the tunnel site was also already done in order to find the cause and source of water flow, but the result was not satisfying. Even though the suspected source of the flooding was identified in the previous study, but the whole hydrogeologic system of the

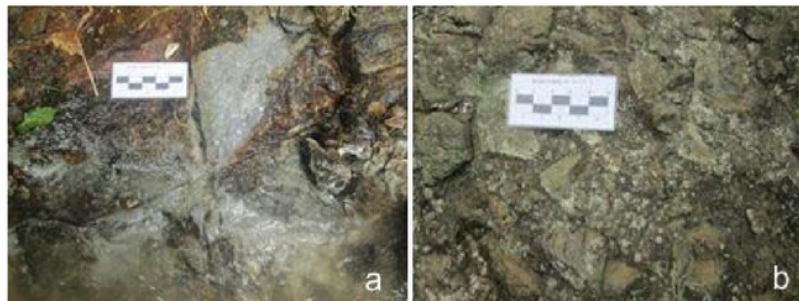
area was not evaluated yet, and countermeasures to solve the problem were not well formulated.

Due to the rationales mentioned above, such more detail and different way of assessment than have been done before to overcome the problems is needed to be held, in order the mining activity can be operated as expectation. This study was done to assess the hydrogeological condition, determine the sources of groundwater inflow, and find problem solution for the gold mining activity, by applying fissure/fracture structure analysis. Location of the study was in Pongkor and surrounding area, Bogor regency, West Java province, Indonesia, with the coordinates of UTM Zone 48, 670,800–674,800 mE and 9,260,400–9,264,400 mN. Figure 1 shows the location map of the study area. The target of the study is to produce hydrogeologic map, conceptual model, and matrix of recommendation to unravel the hydrologic problem.

2 Method of study

Basically, this study was conducted by analytical assessment using secondary and primary data, compiled with some field works, such as surveys, observations, and mappings. Remote sensing by satellite imagery interpretation was also done in early step of the field works, especially to get initial information on geological structures, and especially general fracture pattern of the study area. Surface geological mapping was performed by utilising basic topographic map of 1:25,000 scale. Hydrogeologic mapping was conducted based on the previous map developed by Murtianto (2008). Refers to Brassington (2007), petrologic laboratory analysis, river flow rate measurements, surface water infiltration measurements using double ring infiltrometer, and chemistry laboratory testings to acquire rock and water properties were done, and used for supporting hydrogeologic system identification (Domenico and Schwartz, 1990; Fetter, 1994).

Figure 2 Volcanic rocks in the study area, (a) pyroclastic breccia (b) autoclastic breccia (see online version for colours)



Hydrogeologic conceptual modelling was prepared with comparing to the model has been developed by Robles and Candela (2010) and Petchsingto and Karpyn (2010). More detail analysis was done on geological structures of the study area, especially related to the fissure structures such as joints, cracks, and faults. Considering to the dominant rock forming formation which consisting of relatively jointed volcanic rocks (Figure 2),

therefore fissure analysis was absolutely needed to be applied. The analysis was completed by tracing the lineament of joints, cracks, and fractures using air photo and satellite imagery, combined with fissure structures data directly got from field investigation, and then plotted into rosette diagram to get the general pattern of geological structures especially joint and fault system. Joint spacing computation and analysis was also done, used to determine the aquifer characteristic in the study area. As considerations in this study, Saha (2013) proposed such a numerical model to managing groundwater-surface water problems. While Allawi (2014) stated that problems related to flow through an unconfined aquifer resting on a semi pervious layer, must take the leakage factor of the semi pervious layer, the transmissivity and the specific yield of the aquifer as hydro-geological constants into account.

2

3 Results and discussion

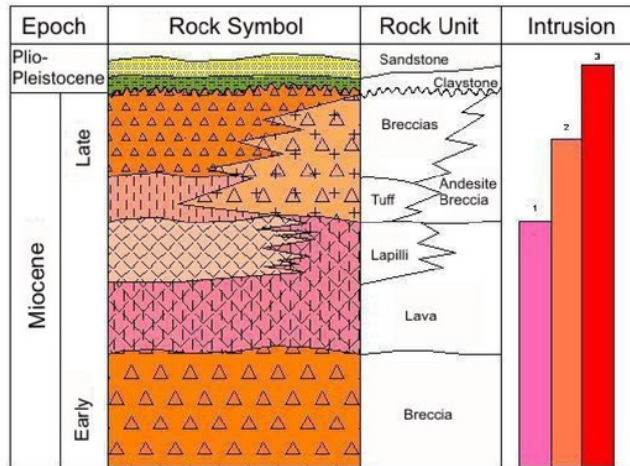
3.1 Geology

According to Van Bemmelen (1949), Pongkor and surrounding area belongs to the Banten Zone which is a part of the east wing of Bayah Mountains. The geomorphology can be classified as denudated volcanic hills (Van Zuidam, 1983), with some igneous rock intrusions. Purwanto and Riswandi (2008) and Riswandi and Purwanto (2008) stated that the geologic history of Banten Zone started with volcanism in the late Eocene to early Miocene, followed by volcanism in Pleistocene, creating such volcanic wavy landform and intrusion hills. The landform is eroded by streams of river Cikaniki and river Cimaja, developing a sub-dendritic pattern. Concerning to Basuki et al. (1994), Efendi et al. (1998), Purwanto and Riswandi (2008) and Purwanto (2012), rock units composing the regional stratigraphy of Bayah Zone from the oldest to the youngest formations can be broken down as follows (Figure 3):

- 1 *Bayah formation* consists of pebbly sandstone with clay stone interlayering and locally coal seam of about 3 m thick at the upper part, Oligocene aged, and unconformably overlain by Cijengkol formation.
- 2 *Cijengkol formation* consists of claystone and limestone of Oligo-Miocene, can be correlated to Batuasih formation and Rajamandala formation from the Bogor zone.
- 3 *Cimapag formation* consists of andesite breccias with some limestone fragments, black clay layer of 15 cm thick from marine deposition. It is sedimented in early Miocene epoch.
- 4 *Sareweh formation* consists of claystone and limestone from shallow marine.
- 5 *Bojongmanik formation* consists of sandstone and claystone with coal insertion, of middle Miocene.
- 6 *Young volcanic deposits* is the youngest rock unit in Banten zone, comprises acidic tuff from quaternary volcanic products of Pleistocene epoch.
- 7 *Andesite intrusion* is found in Cimapag formation, early Miocene. In the study area, it exists at the eastern and western part of Pongkor hill.

In detail, the geological condition of Pongkor area is as expressed in the stratigraphic column set by Purwanto (2012) and the geologic map built by the authors (Figure 4)

Figure 3 The stratigraphy of Pongkor and surrounding area (see online version for colours)



Source: Purwanto (2012)

11
Stratigraphy of the study area is comprised of four rock units including andesite breccia unit, tuff breccia unit, andesite intrusion, and alluvial deposits. Andesite breccia is composed of andesite fragments, pebble-gravel grain sized, sub angular to angular shaped of fragments, poorly sorted, open fabric, sand matrix, and tuff content, and silica cement. This unit is presumed to be a belahar deposit. Tuff breccia unit is predominantly composed of andesite fragments, mixed with tuff and lapilli, sub angular shaped, poorly sorted, open fabric, sand matrix, silica cement, and presumed to be pyroclastic flow deposits. Andesite intrusion as dike in the study area shows porphyritic texture, with hornblende, pyroxene, quartz, plagioclase, and K-feldspar composition. Alignment direction of the dike is northeast-southwest. In some outcrops, there is autobreccia structure, formed by the freezing process of magma at or near the surface. Alluvial deposits consist of unconsolidated material of clay, silt, sand, gravels and boulders, sourced from the older rock formations.

Geologic structure of the study area expresses joints and faults (Figure 5), as the result of compressional stress (Riswandi and Purwanto, 2008). The joint spacing derived from computation ranges from 0.07 to > 10 m (Figure 5), with the distance among others varies 35 cm to more than 100 cm, and the length ranges from 4 cm to 280 cm. General strike directions of the fracture structures is Northwest-Southeast and Southwest Northeast with slope angle ranging from 50° up to 80°. Faults in the study area can be classified into lateral slip with relative movement of Northwest-Southeast direction, and slope angle of 70°–80°. The geologic structures and fracture pattern map can be seen in Figure 6, while the fault data are written in Table 1.

Figure 4 Geologic map of Pongkor area (see online version for colours)

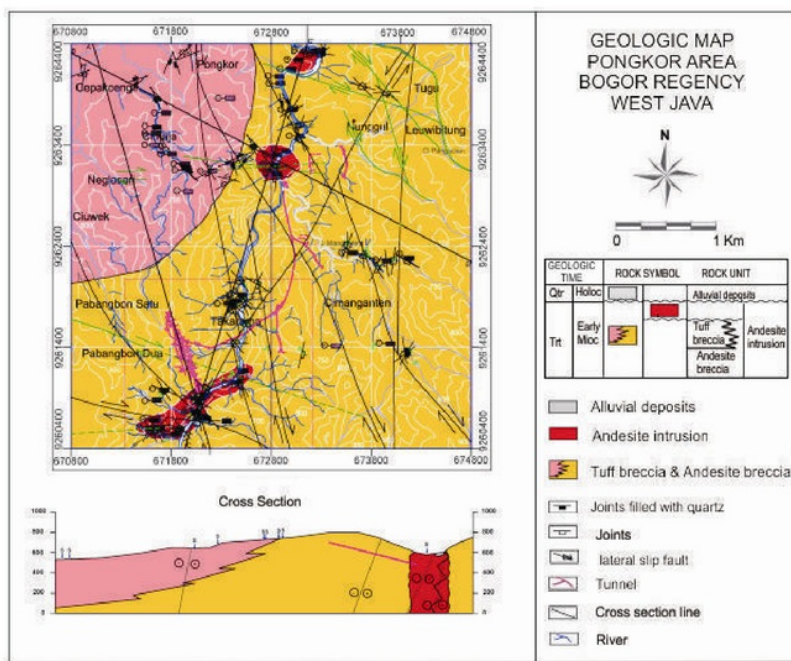


Table 1 Fault data in the study area

<i>Name of the fault</i>	<i>Strike and dip of the fault plane</i>	<i>Relative movement</i>
Cibanteng fault	N 320° E/80°	Dextral
Cisarua fault	N 330° E/65°-70°	Dextral
Cikaniki fault	N 330° E/65°-70°	Dextral
KubangCicau fault	N 330° E/65°-70°	Dextral
Ciguha fault	N 310° E/80°	Dextral
CepakKawung fault	N 310° E/80°	Dextral
Cimaja fault	N 076° E/70°	Dextral
CadasCopong fault	N 054° E/44°	Synistral

Figure 5 Map showing joint spacing (derived from satellite image) of the study area (see online version for colours)

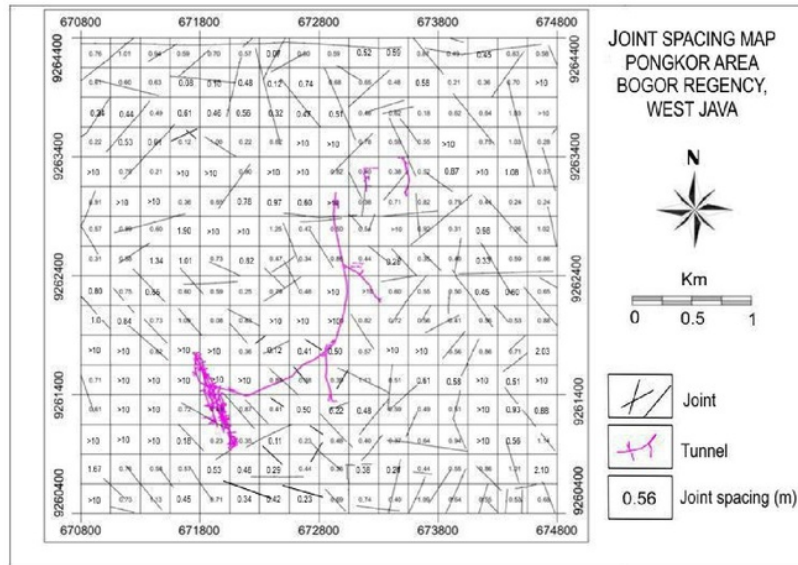
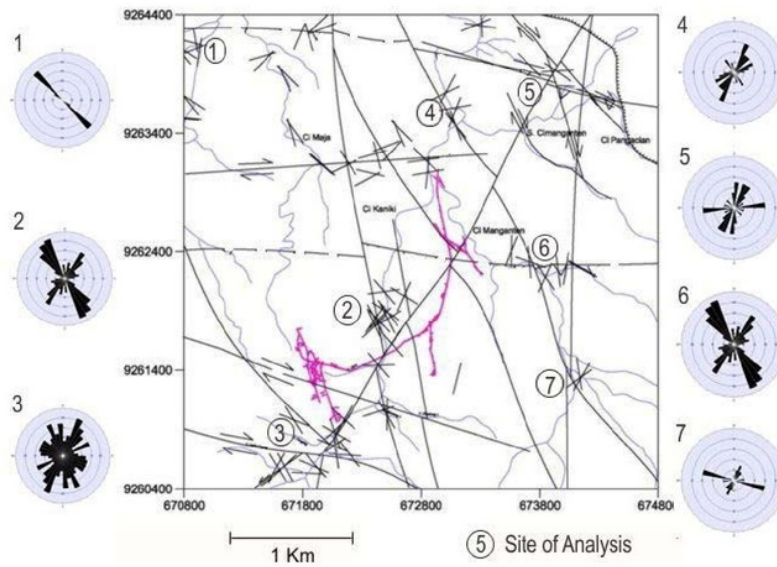


Figure 6 Map showing geologic structures and their strike orientations (derived from field investigation) (see online version for colours)

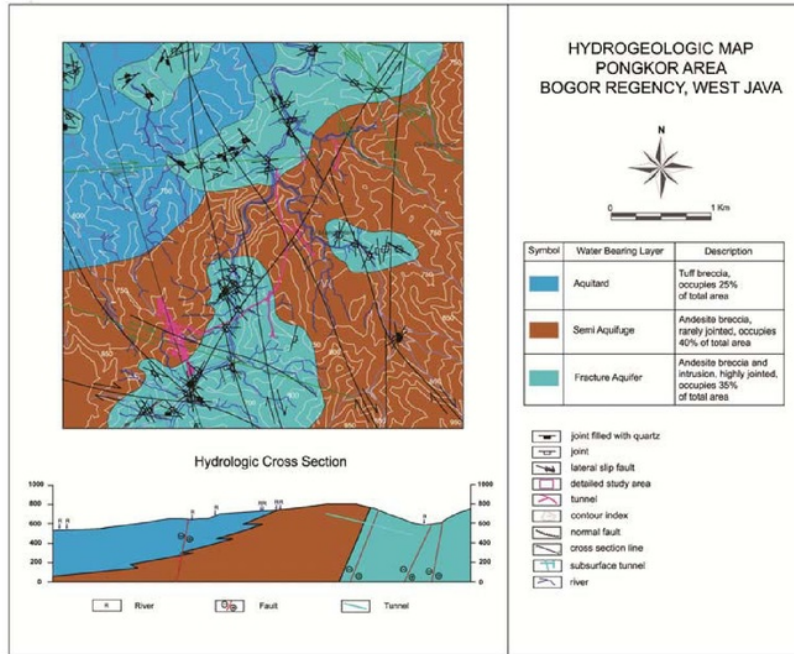


3.2 Hydrogeologic condition

Based on hydrogeologic a property that is influenced by rock unit composition and geologic structure intensity, groundwater bearing formation in the study area can be classified into three types, namely: aquifer, aquitar and semi aquifuge. Considering to the kind of openings, which are predominantly formed by fissures, the aquifer can be categorised as fractured aquifer. It is composed of breccias, andesitic breccias, and andesite, the joint spacing ranging 0.07–0.9, mostly located in the middle part, occupying 55% of the study area. Due to the rocks condition that is fractured, there exist such weak zones which function as the entry way of surface water into subsurface. In order to prove the influence of the geologic structures to hydrogeological condition of the study area, fracture density, orientation and pattern needs to be analysed.

Aquitar consists of tuff breccia, tuff, and lapilli tuff, with joint spacing ranges 1.0–10 m. It occupies the western part, 20% of the total study area. Geologic structure such as fracture and fault in this unit is not well developed. On the other hand, semi aquifuge is specified by very small porosity and permeability, it stores and capable of passing a very little water to none at all (approaching aquifuge). The semi aquifuge consists of andesite breccia and andesite intrusion, with joint spacing of 1.0–10. It is distributed in the western and eastern part, 25% of the total research area. Structures existing in the semi aquifuge are a rejoinments but not so dense, locally, and do not show any systematic pattern. Hydrogeologic map of the study area is showed in Figure 7.

Figure 7 Hydrogeologic map of Pongkor area (see online version for colours)

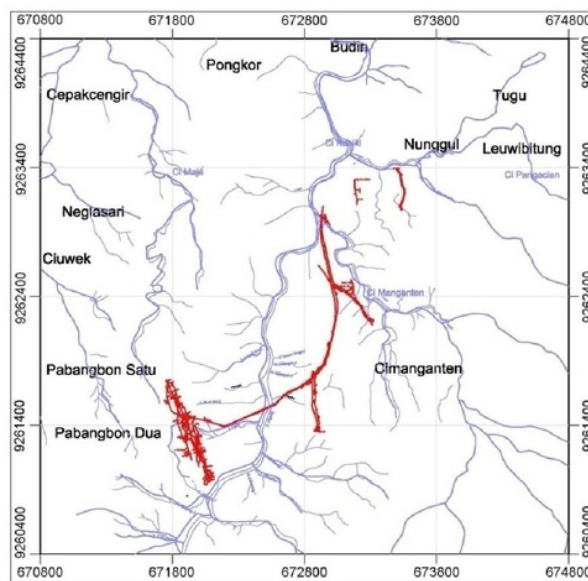


25
To complete the hydrogeological assessment in the study area, and in order to identify the quality, 51 water samples were taken from river and flows in the tunnel. They were in general colourless, odourless, and tasteless. The acidity was normal with pH around seven, based on the values of TDS and electric conductivity, the ground water can be classified into fresh water.

3.3 Surface flow and infiltration

Surface water system of river Cikaniki, river Cimaja and their tributaries form such watersheds. Flow direction of the main rivers is to the north, in general forming sub dendritic drainage patterns (Figure 8). It is influenced by the existence of joints and faults, in mature stadium. There are two watersheds namely Cikaniki watershed and Cimaja watershed. Streamflow measurements were done at 38 locations of river Cikaniki and its tributaries. The flow rate of river Cikaniki varies from 5.188 m³/sec to 32.88 m³/sec, while its tributaries range between 0.027 m³/sec and 0.193 m³/sec. The flow rates of river Cikaniki and its tributaries show two different characters, the highest rate at the southern part is 32,88 m³/s, while the highest rate at the northern part is only 7,70 m³/s. Infiltration capacity based on measurements done at two locations of river Cikaniki, recorded 1.2 m³/h and 0.2 m³/h. Infiltration rate in the study area is 14 cm/min at the first location with a capacity of infiltration (F1) = 1.2 m³/h, and 3 cm/min at the second location with a capacity infiltration (F1) = 0.2 m³/h. Flow measurements data of River Cikaniki can be seen in Table 2.

Figure 8 Drainage patten of Pongkor area (see online version for colours)



Note: The red lines is tunnel.

Table 2 Flow rate measurements data of river Cikaniki

<i>Site location</i>	<i>Flow rate</i>	<i>Site location</i>	<i>Flow rate</i>
<i>North part</i>	<i>(m³/s)</i>	<i>South part</i>	<i>(m³/s)</i>
Q16	7.70	Q2	10.04
Q18	7.00	Q5	30.38
Q19	6.18	Q6	32.88
Q22	5.74	Q13	11.37
Q23	7.35	Q14	14.01

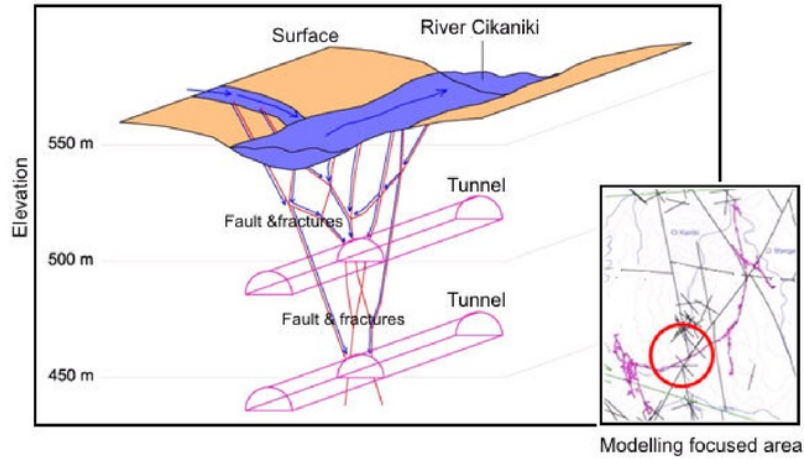
3.4 Hydrogeologic conceptual model

As indicated by Chiu and Chia (2012), there can be an impact of groundwater discharge to such a tunnel penetrated a water source. In the study area, there is groundwater inflow to the tunnel through fissures system (Figure 9). Results of flow rate measurements on river Cikaniki and its tributaries around Vein Ciurug demonstrate two trends, i.e., in the north part the maximum flow rate is 7.70 m³/s, and in the south part the maximum flow rate is 32.88 m³/s. It reflects such a significant decrease of the flow rate of river Cikaniki system before crosscutting the fault (38–48 m³/s) and after (20–27 m³/s). This condition strengthens the assumption that there is such a leakage of river Cikaniki into the tunnel through fissure system, causing massive groundwater inflow to the ramp down at the elevation under +500 m asl, flooding the tunnel.

Figure 9 Groundwater inflows through fractures to the tunnel (see online version for colours)

Referring to Petchsingto and Karpyn (2010), Saha (2013), and Hernandez et al. (2016), based on hydrogeologic and surface flow data analysis, the hydrogeological conceptual model of area around the meeting point of river Cikaniki and Cikaniki fault system can be developed, and is shown in Figure 10.

Figure 10 Conceptual model of hydrogeological leakage from river Cikaniki to the tunnel (see online version for colours)



3.5 Recommendation of problem solving

Focusing on Cikaniki watershed, a matrix of risks and countermeasures related to hydrogeological problems in the mining tunnels was compiled. Parameters considered for the assessment include geological and hydrogeological factors (Ward and Trimble, 2004) that exist either on the surface or in the tunnel. The matrix of risk and problem solving of the Vein Ciurug and surrounding area is as follows (Table 3).

Table 3 Matrix of risk and problem-solving for the tunnel of Vein Ciurug

Parameters	Description
Litology	Andesite breccia, andesite lava, tuff breccia
Geologic structure	Joints, faults
Hydrogeologic characteristic	Fractured aquifer
Risk on the surface	Mass movements, land subsidence, flooding
Risk in the tunnel	Collapse, water inflow, flooding
Recommendation	Wall grouting at the site of water inflow by applying high pressure grouting (PEG), grouting on the fault zone of River Cikaniki, tunnel draining

Special wall grouting by pre-excavation grouting (PEG) method, using *microfine cement* (MC) supplemented with *colloidal silica* (CS) (Garshol et al., 2013) is need to be done on the fault zone in the tunnel of where the water inflow, and at the location of where river Cikaniki is crosscut by the fault. On the other hand, in order to drain the water that already flooding the tunnel, a draining system can be operated.

4 Conclusions

The study area geomorphologically expresses denudated volcanic hills with intrusion, and is drained by two major rivers, namely river Cikaniki and river Cimaja. The lithology is composed of andesite breccia, tuff breccia and andesite intrusion of Mioceneepoch. The area is strongly dissected by joints and faults, direction of the lineament pattern is generally north-northwest-south-southeast and north-northeast-south-southwest, and movement type of the main faults is lateral slip.

River Cikaniki showed flow rate of 32.88 m³/sec (maximum) and 0.01 m³/sec (minimum). Infiltration ranged from 0.2 m³/h to 2.1 m³/h. Based on the values of EC, TDS, and pH, the water quality can be categorised as fresh water.

Water bearing rocks in the study area can be classified into fractured aquifer, aquitar and semi aquifuge. The fractured aquifer comprises andesite breccia, the aquitar involves tuff breccia, while the semi aquifuge consists of andesite breccias and intrusive rock that are not intensively fractured. Water flow system in the aquifer occurs through fissures (joints and faults). Water supply of the aquifer is mainly derived from surface runoff, especially river Cikaniki. This is verified by the significant decrease in rate at the time before and after the river flowing across the fracture/fault zone system.

There is a leakage of river Cikaniki stream into the fracture scheme that cuts the tunnel, causing flooding in the tunnel. This problem disrupts mining activities at ramps with elevation lower than +500 metres above sea level. Recommendation to solve the problem is tunnel wall grouting on the site of groundwater inflow by high pressure grouting (PEG) method, grouting at the fault zone on the bottom of river Cikaniki stream, and draining system in the tunnel that is subjected to groundwater flooding.

Acknowledgements

Many thanks are dedicated to the business unit of Gold Mining of Pongkor, PT. Aneka Tambang Indonesia Tbk for all the supports provided during the field works and analyses of the study. We also like to express our gratitude to Ir. Yosep Purnama and his staffs, because the research would not be able to complete without their assistantship. High appreciation is also given to the Institute of Research and Community Service Universitas Pembangunan Nasional 'Veteran' Yogyakarta for facilitating all of the research activities.

References

- Allawi, F. (2014) 'Groundwater flow through an unconfined aquifer resting on a semi-pervious layer', *Int. J. of Hydrology Science and Technology*, Vol. 4, No. 4, pp.336–347.
- Basuki, A., Sumanagara, D.A. and Sinambela, D. (1994) 'The Gunung Pongkor gold-silver deposit, West Java, Indonesia', *Journal of Geochemical Exploration*, Vol. 50, Nos. 1–2, pp.371–391, Elsevier Science.
- Assington, R. (2007) *Field Hydrogeology*, 3rd ed., John Wiley & Sons Ltd, London, England.
- Chiu, Y. and Chia, Y. (2012) 'The impact of groundwater discharge to the Hsueh-Shan tunnel on the water resources in northern Taiwan', *Hydrogeology Journal*, Vol. 20, No. 8, pp.1599–1611.
- Domenico, P.A. and Schwartz, F.W. (1990) *Physical and Chemical Hydrogeology*, John Wiley & Sons, New York, USA.
- Efendi, A.C., Kusinama and Hermawanto, B. (1998) *Geologic Map of Bogor Sheet, Java, Scale 1:100.000*, Center of Geological Research and Development, Bandung, Indonesia.
- Fetter, C.W. (1994) *Applied Hydrogeology*, 3rd ed., Macmillan College Publishing Company, New York, USA.
- Garshol, K.F., Tam, J.K.W., Mui, S.W.B., Chau, H.K.M. and Lau, K.C.K. (2013) 'Deep subsea rock tunnels in Hong Kong', *Proc. World Tunnel Congress 2013*, Geneva, Switzerland, pp.1–7.
- Gautama, R.S., Syafrizal, Nuhindro, P.W. (2010) *Hydrogeologic Assessment of Ramp Down Ciurug L450 in Gold Mining Business Unit, Pongkor (First Step)*, PT LAPI ITB, Bandung, Indonesia.
- Hernandez, J.J.C., Freyre, C., Martinez, M.C. and Levresse, G. (2016) 'Groundwater flow in transboundary fault-dominated aquifer and the importance of regional modeling: the case of the city of Queretaro, Mexico', *Hydrogeology Journal*, Vol. 24, No. 2, pp.373–393.
- Murtianto, E. (2008) *Hydrogeologic Map of Indonesia, Bogor Sheet, Scale 1:100.000*, Directorate of Environmental Geology, Bandung.
- Petchsingto, T. and Karpyn, Z.T. (2010) 'Simulation of fluid percolation in a rough-wallet rock fracture', *Hydrogeology Journal*, Vol. 18, No. 2, pp.1583–1589.
- Purwanto, H.S. (2012) 'Structural control on gold mineralization of subsurface quartz veins of level 600 m–500 m in the gold mining, Pongkor, West Java', *Jurnal Ilmiah MTG*, Vol. 5, No. 2, pp.17–22, ISSN: 1979-0090.
- Purwanto, H.S. and Riswandi, H. (2008) 'Alteration & Mineralization of goldin Nirmala area, Bogor West Java', *Proc. Earth National Seminar 2008*, Universitas Pembangunan Nasional 'Veteran' Yogyakarta.
- Riswandi, H. and Purwanto, H.S. (2008) 'Interpretation of structure and alteration zone based on geophysical interpretation in Nirmala area, Bogor West Java', *Scientific Journal MTG*, Vol. 1, No. 2, pp.21–26, Universitas Pembangunan Nasional 'Veteran' Yogyakarta, ISSN: 1979–0090.
- Robles, V.M. and Candela, L. (2010) *Hydrogeology Conceptual Model Characterisation of an Abandoned Mine Site in Semiarid Climate*, Department of Geotechnical Engineering and Geosciences, Technical University of Catalonia (UPC), Jordi Girona, Barcelona 08034, Spain.
- Saha, G.C. (2013) 'Analysis of groundwater-surface water interaction in horizontal unconfined aquifer bounded by a stream and groundwater divide using a non-linear numerical model', *Int. J. of Hydrology Science and Technology*, Vol. 3, No. 3, pp.193–205.

- Sudharto, A., Risono, Purnama Y., Pratama, R. and Nugroho, I.I. (2010) 'Determination of supply zone of subsurface water in Vein Ciurug of underground mining, UBPE – Pongkor PT ANTAM, Tbk', *Proc. Perhaps XIX Annual Convention & Exhibition*, Balikpapan, pp.33–39.
- Bemmelen, R.W. (1949) *The Geology of Indonesia*, Vol. IA, Martinus Nijhoff, The Hague.
- Van Zuidam, R.A. (1983) *Guide to Geomorphologic Aerial Photographic Interpretation and Mapping*, I 21 Enschede, The Netherlands.
- Ward, A.D. and Trimble, S.W. (2004) *Environmental Hydrology*, 2nd ed., Lewis Publishers, Ward.

Fissure Structure

ORIGINALITY REPORT

33%

SIMILARITY INDEX

32%

INTERNET SOURCES

14%

PUBLICATIONS

8%

STUDENT PAPERS

PRIMARY SOURCES

1

www.inderscience.com

Internet Source

24%

2

S B Kusumayudha, Y O Putra, P Pratiknyo.
"Conservation zones in a cultural heritages
area of Penanggungan Volcano, based on
volcanic-hydrogeological assessment,
Mojokerto Regency, East Java, Indonesia", IOP
Conference Series: Earth and Environmental
Science, 2018

Publication

1%

3

jurnal.upnyk.ac.id

Internet Source

1%

4

Submitted to Universitas Islam Indonesia

Student Paper

1%

5

Mohamed Galal Eltarabily, Abdelazim M.
Negm, Chihiro Yoshimura, Jiro Takemura.
"Groundwater Modeling in Agricultural
Watershed under Different Recharge and
Discharge Scenarios for Quaternary Aquifer
Eastern Nile Delta, Egypt", Environmental

1%

Modeling & Assessment, 2017

Publication

6	www.ags-hk.org Internet Source	1%
7	Qiang Xia, Mo Xu, Han Zhang, Qiang Zhang, Xian-xuan Xiao. "A dynamic modeling approach to simulate groundwater discharges into a tunnel from typical heterogenous geological media during continuing excavation", KSCE Journal of Civil Engineering, 2017 Publication	1%
8	repository.ubaya.ac.id Internet Source	<1%
9	direxploration.com Internet Source	<1%
10	"Recent Research on Engineering Geology and Geological Engineering", Springer Nature America, Inc, 2019 Publication	<1%
11	eprints.upnyk.ac.id Internet Source	<1%
12	www.eme.psu.edu Internet Source	<1%
13	docshare.tips Internet Source	<1%

14	N A Amri, Hartono, H T Siri. "Kriging by partition: case of Ciurug Quartz Gold Vein", IOP Conference Series: Earth and Environmental Science, 2018 Publication	<1%
15	repositorio.upct.es Internet Source	<1%
16	journal.sttnas.ac.id Internet Source	<1%
17	ddd.uab.cat Internet Source	<1%
18	www.ukm.my Internet Source	<1%
19	dspace.lib.cranfield.ac.uk Internet Source	<1%
20	Submitted to iGroup Student Paper	<1%
21	Submitted to Nottingham Trent University Student Paper	<1%
22	Wahono, H, A Priyono, E Subroto, M Syaifuddin, E Hermanto, and D Noeradi. "Preliminary study on Paleozoic and Mesozoic source rocks in the frontier offshore South Makassar Basin, Indonesia", Water-Rock Interaction Proceedings of the 12th	<1%

International Symposium on Water-Rock
Interaction Kunming China 31 July - 5 August
2007, 2007.

Publication

23

www.guyanafrontier.com

Internet Source

<1%

24

link.springer.com

Internet Source

<1%

25

epdf.tips

Internet Source

<1%

26

thescholarship.ecu.edu

Internet Source

<1%

27

Asit Kumar Batabyal, Surajit Chakraborty.
"Hydrogeochemistry and Water Quality Index in
the Assessment of Groundwater Quality for
Drinking Uses", Water Environment Research,
2015

Publication

<1%

28

Mohsen Golian, Ebrahim Sharifi Teshnizi,
Mohammad Nakhaei. "پیش بینی آب ورودی به تونل های
به روش شبیه TBM مکانیزه به ازای پیشروی حفاری دستگاه
"سازی عددی", Hydrogeology Journal, 2018

Publication

<1%

29

Kushawaha, J.S., and B.K. Misra. "Improved
imposition of displacement boundary
conditions in element free Galerkin method

<1%

using penalty method", International Journal of Computer Aided Engineering and Technology, 2016.

Publication

Exclude quotes Off

Exclude matches Off

Exclude bibliography Off